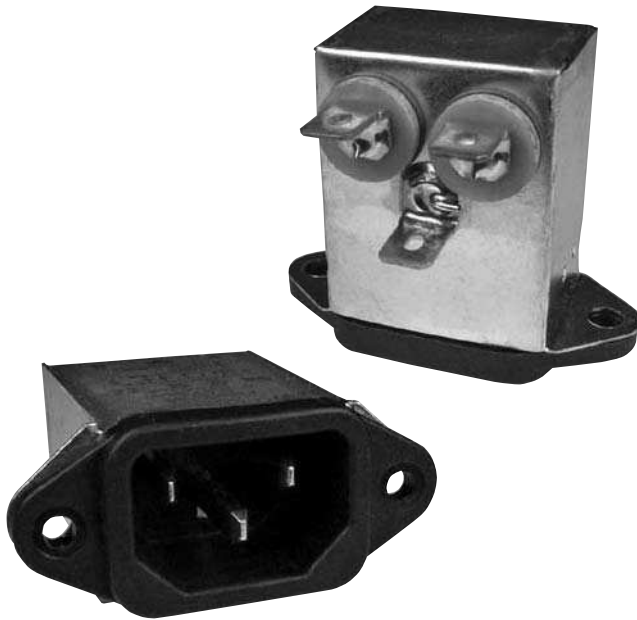


F3000/3100/3200/3400/3500 RFI Filters



Specifications:

Rated Voltage: 250VAC Maximum - 50/60 Hz

Rated Current: 115VAC 250VAC
3A 3A
6A 6A

Current Overload: 6X for 8 seconds

Hi-Pot Test (1 min):

Line to Ground 1500VAC
Line to Line 1768VDC

Insulation Resistance: $9 \times 10^9 \Omega$ at 100VDC

Ambient Temperature: 40°C Max at rated current

Humidity Range: 0% to 95% R.H.

Termination:

A: QC – Quick Connect
C: IEC Receptacle

Maximum Leakage Current:

Each Line to Ground **F3000 Series**
115VAC, 60Hz: 2 μ A
250VAC, 50Hz: 5 μ A

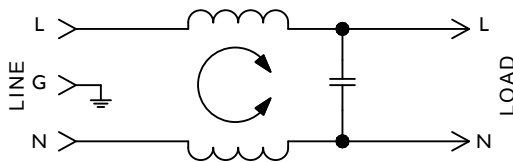
Agency Approvals:



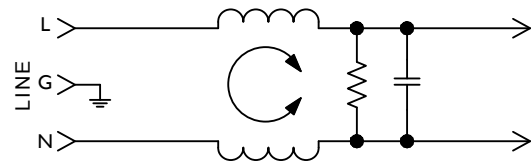
Features:

- Designed to Meet UL544 Specification for Medical and Dental Equipment. Available to UL/IEC 60601 Standard
- F3400/F3500 Have Enhanced Differential Mode Performance
- Effective in Other Low-Leakage Current Applications

**F3000/F3100/F3200 Series
Simplified Schematic**



**F3400/F3500 Series
Simplified Schematic**



Nominal Current Rating	Part Number	Termination Line/Load	MINIMUM INSERTION LOSS - dB (50 ohm Circuit)						
			MODE	Frequency - MHz					
				.15	.50	1.0	5.0	10	30
3A	F3400CA03	IEC/QC	Common	22	32	35	30	25	20
	F3500CA03	IEC/QC	Differential	8	18	24	35	35	35
6A	F3000AA06	QC/QC	Common	10	20	23	25	23	15
	F3100CA06	IEC/QC	Differential		2	8	32	34	23
	F3200CA06	IEC/QC							
	F3400CA06	IEC/QC	Common	15	21	24	24	22	26
	F3500CA06	IEC/QC	Differential	8	18	24	35	35	35

NOTE: Other combinations of terminals may be specified on special order.

Dimensions are in inches and millimeters unless otherwise specified. Values in parentheses are metric equivalents.



Curtis Industries
A Division of Powers Holdings, Inc.

1-800-657-0853

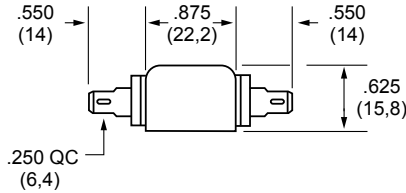
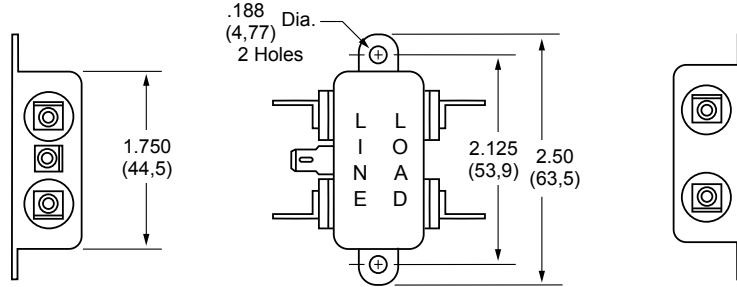
General Purpose Filtered Modules

MEDICAL FILTERS

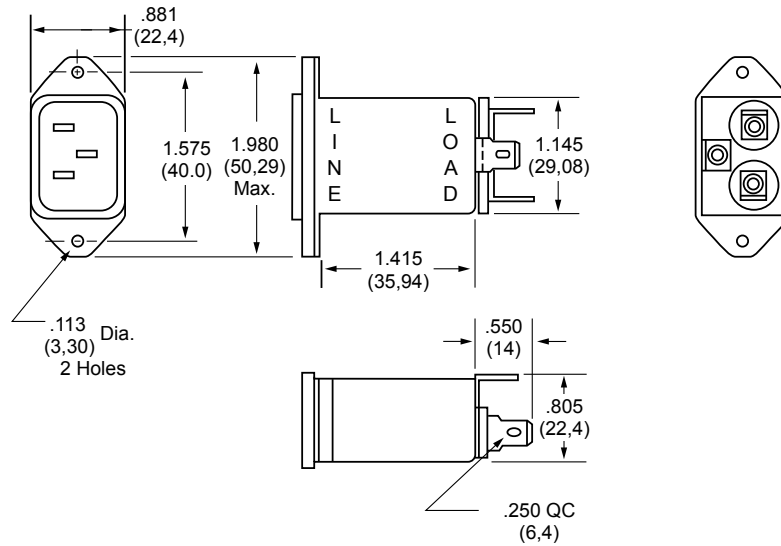
F3000/3100/3200/3400/3500 RFI Filters (continued)

General Purpose Filtered Modules

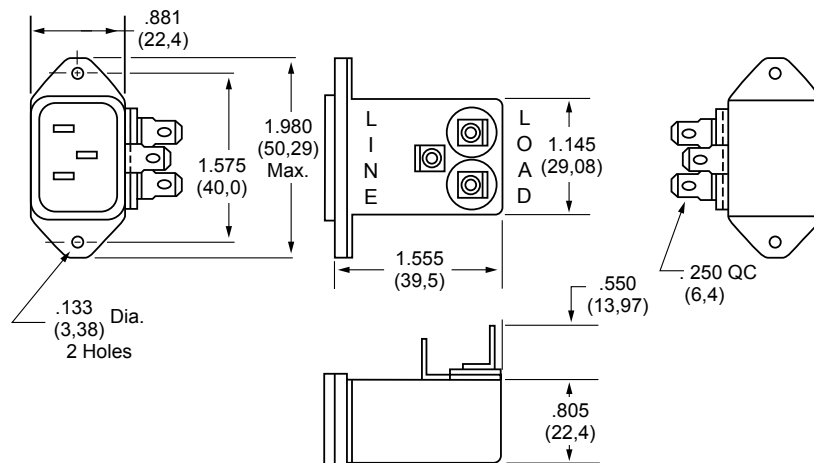
F3000AA
(6Amp)
Dimensions



F3100CA
(6Amp)
F3400CA
(3 and 6Amp)
Dimensions



F3200CA
(6Amp)
F3500CA
(3 and 6Amp)
Dimensions



MEDICAL FILTERS

