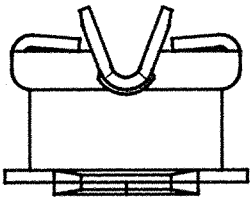
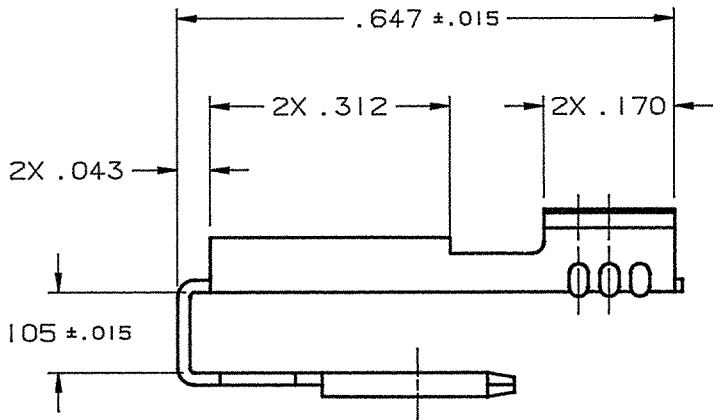
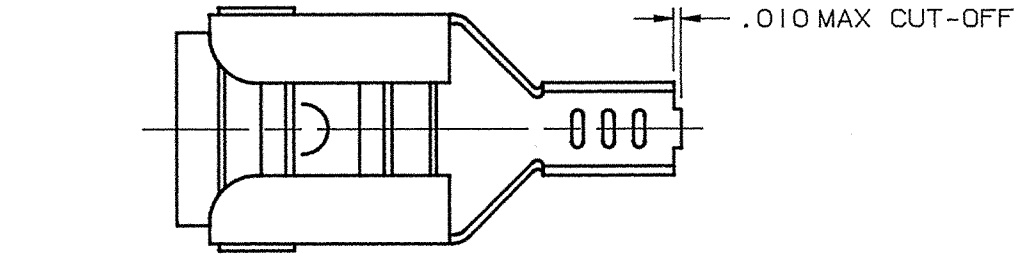


| DEPT | |
|------|---|
| 1 | 1 |
| 2 | |
| 3 | |
| 4 | 3 |
| 5 | |
| 6 | |
| 7 | |
| 8 | |
| 9 | |
| 10 | |
| 11 | |
| 12 | |
| NC | |
| JZ | |

PART NAME: PIGGYBACK TERMINAL

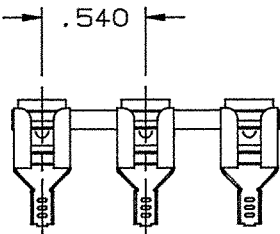
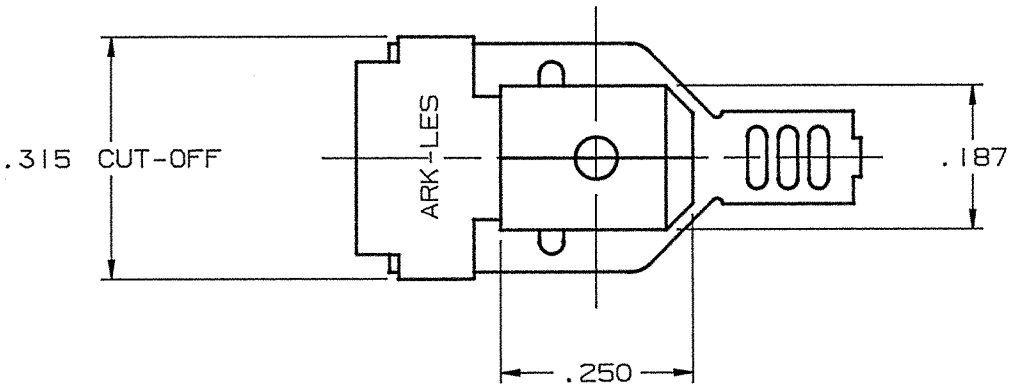
PART NO: 3800H74A/-6-2

| PART NO. | MATERIAL | FINISH |
|---------------|------------------|-----------|
| 3800H74A-6-2 | .016 THICK BRASS | PRETINNED |
| 3800H74AB-6-2 | | NONE |



- NOTES:
- 1. TO ACCEPT A .250 X .032 MALE TAB, AND A .187 X .032 FEMALE QUICK-CONNECT.
 - 2. TO ACCOMMODATE #22-#18 GAUGE WIRE.
 - 3. RECOMMENDED STRIP LENGTH: 7/32 ± 1/32.
 - 4. INSERTION/WITHDRAWAL FORCES TO COMPLY WITH UL 310.
 - 5. FOR LOOSE PIECE PARTS ADD SUFFIX "-1K" TO PART NUMBER (I.E. 3800H74A-6-2-1K).
 - 6. FOR STANDARD REELING SEE FIGURE 1.
 - 7. FOR REVERSE REELING ADD SUFFIX "R" TO PART NUMBER (I.E. 3800H74A-6-2R). SEE FIGURE 2 FOR REELING.
 - 8. ALL CORNERS SHOWN SHARP MAY HAVE A .010 MAX. RADIUS.

ARK-LES
UNCONTROLLED



FABRICATED TERMINAL STRIP
SCALE 1=1

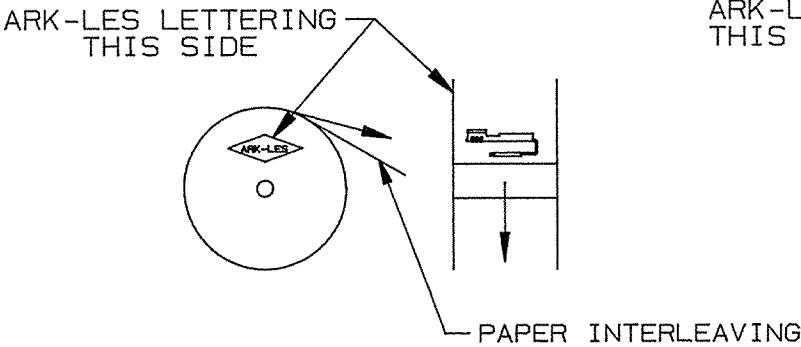


FIGURE 1
STANDARD REELING
(I.E. 3800H74A-6-2)

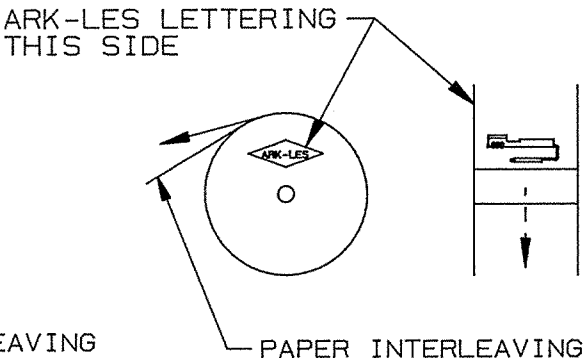


FIGURE 2
REVERSE REELING
(I.E. 3800H74A-6-2R)

| | | | | | | | | | | |
|------|--------------------------------|----------|-----|------------------------|-----------------|----------|----|--|----------------|------------|
| | | | | PROD. REL. | HW 3842 | 1/22/96 | RT | TOLERANCES UNLESS OTHERWISE SPECIFIED: | | |
| | | | | QUOTE REL. | | | | DECIMALS ±.010 | METRIC ±0.25mm | ANGLES ±1° |
| | | | | DR: | B J CARUTHERS | 12/26/95 | | MATERIAL: SEE TABLE | | |
| B | REVISED PER ECR #11108 | 11/5/96 | BJC | CHK'D: | R.W.T. | 11-7-96 | | FINISH: SEE TABLE | | |
| A | PROD. REL. P/N WAS 3000HX198A/ | 12/26/95 | BJC | APP: | cor | 11-15-96 | | PART NO: 3800H74A/-6-2 | | |
| | PER ECR #10733 | | | SUPERCEDES DWG. DATED: | | | | | | |
| REV. | DESCRIPTION | DATE | DR. | SCALE: 4=1 | CAD NO: BVE0014 | | | | | |

ORIGINAL