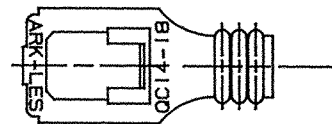
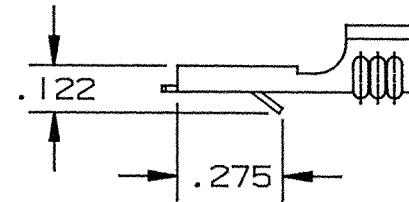
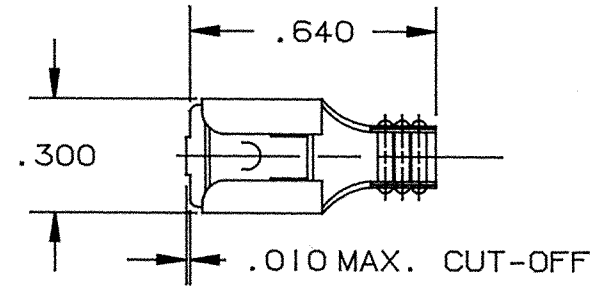


DEPT	
1	1
2	
3	
4	1
5	
6	
7	
8	
9	
10	
11	
12	
NC	
JZ	

PART NAME: TERMINAL, FEMALE LOCK-IN

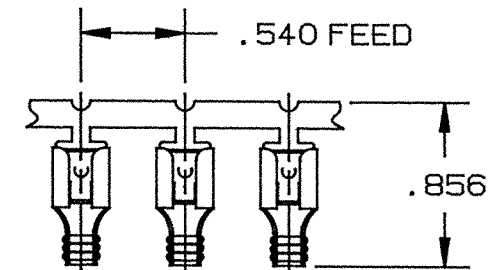
PART NO: 3000H118/-5-2



PART NUMBER	MATERIAL	FINISH	Q.C. STAMP
3000H118A-5-2	.016 ±.0005 THK. BRASS PRETINNED	SEE MAT'L	YES
3000H118AB-5-2	.016 ±.0005 THK. BRASS	NONE	YES

NOTES:

1. TERMINAL WILL ACCEPT STANDARD .250 X .032 MALE TAB.
2. TO ACCEPT #14-#18 GAUGE WIRE.
3. RECOMMENDED STRIP LENGTH: 7/32 ±1/32.
4. FOR LOOSE PIECE PARTS ADD -1 TO PART NUMBER.
5. FOR REVERSE REELING ADD SUFFIX "R" TO PART NUMBER AS SHOWN.
6. FOR PARTS LESS DIMPLE ADD SUFFIX "-3" TO PART NUMBER.



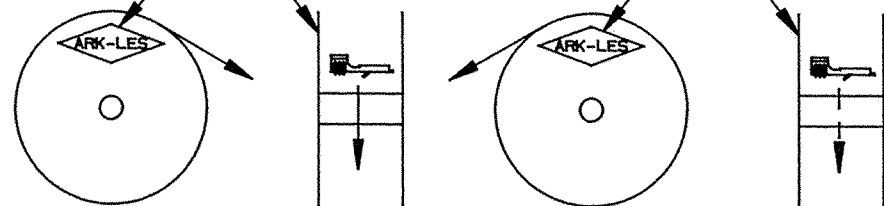
FABRICATED TERMINAL STRIP

SCALE: FULL

ARK-LES
UNCONTROLLE

ARK-LES LETTERING
THIS SIDE

ARK-LES LETTERING
THIS SIDE



STANDARD REELING
(I.E. 3000H118A-5-2)

REVERSE REELING
(I.E. 3000H118A-5-2R)

REELING DIAGRAMS

			PROD. REL.	PER JB	8-2-77	A.D.	TOLERANCES UNLESS OTHERWISE SPECIFIED:		
			QUOTE REL.				DECIMALS ±.010	METRIC ±0.25mm	ANGLES ±1°
			DR:	M. BUMILA	5-5-92		MATERIAL: SEE TABLE		
			CHK'D:	R.W.T.	5-7-92		FINISH: SEE TABLE		
			APP:	B.Hop	5-15-92		PART NO: 3000H118/-5-2		
E	REDRAWN WITHOUT CHANGE PER ECR #9038	5-5-92	M.B.	SUPERCEDES DWG. DATED:	10-5-85				
REV.	DESCRIPTION	DATE	DR.	SCALE: 2X	CAD NO: BT00019				

ORIGINAL IF RED