

DEPT	1
1	1
2	
3	
4	1
5	
6	
7	
8	
9	
10	
11	
12	
ME	

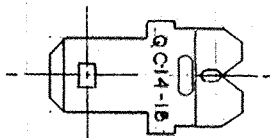
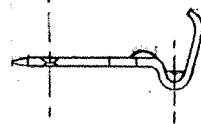
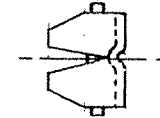
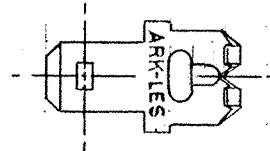
PART NAME:

TERMINAL - MALE

PART NO.

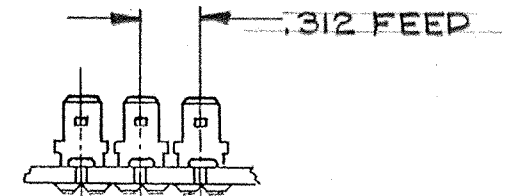
3500 M76C/

PART NO.	MATERIAL	FINISH
3500 M76C	.020 BRASS	PRETIN.
3500 M76CB	.020 BRASS	NONE



NOTES:

1. TO FIT STANDARD .187 FEMALE.
2. TO ACCOMMODATE #14-#18 GAGE WIRE.
3. MADE IN ACCORDANCE WITH NEMA STD. DC2-1982.
4. RECOMMENDED STRIP LENGTH:  $9/32 \pm 1/32$ .



ARK-LES  
UNCONTROLLED

FABRICATED TERMINAL STRIP  
SCALE: 1=1

				PROD. REL.	9603	11-4-65	FAD	TOLERANCES UNLESS OTHERWISE SPECIFIED :		
				QUOTE REL.	9603	11-4-65	FAD	DECIMALS ± .010	METRIC ± 0.25 mm	ANGLES ± 1°
				DR.:	P. PERROTTA	3-6-85		MATERIAL: SEE ABOVE TABLE		
				CHK'D.:	RSM			FINISH: SEE ABOVE TABLE		
				APP.:	R.W.T.	3-13-85		PART NO.: 3500 M76C/		
C	REDRAWN W/O CHANGE;	3-6-85	PJP	SUPERSEDES DWG. DATED: 12-21-66						
REV.	DESCRIPTION	DATE	DR.	SCALE: 2=1	F.M.F.					