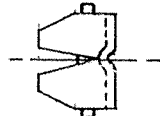
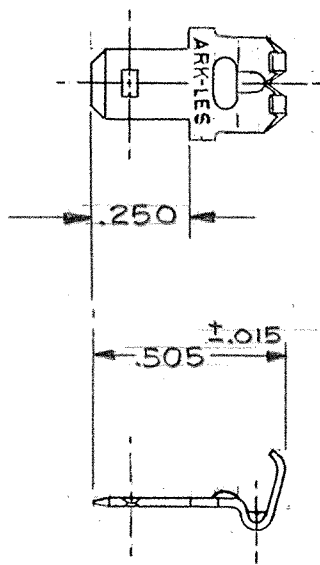


DEPT	
1	1
2	
3	
4	1
5	
6	
7	
8	
9	
10	
11	
12	
ME	

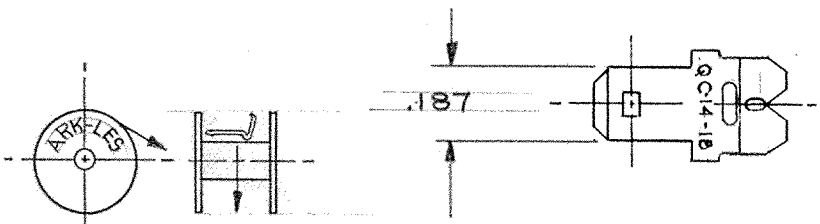
PART NAME: TERMINAL - MALE .187

PART NO. 3500M76A/

PART NO.	MATERIAL	FINISH
3500M76A	.020 BRASS CA 260 PRETINNED	SEE MAT'L
3500M76AB	.020 BRASS CA 260	NONE

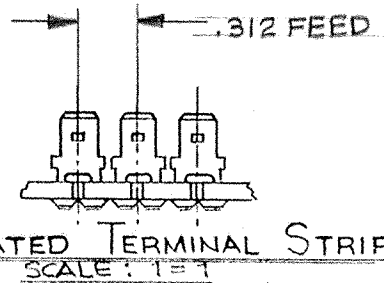


- NOTES:
1. TO MATE WITH .187X.020 FEMALE TERMINAL.
 2. TO ACCOMMODATE #14-#18 GAGE WIRE.
 3. RECOMMENDED STRIP LENGTH: $9/32 \pm 1/32$.
 4. MADE IN ACCORDANCE WITH NEMA STD. DC2-1982.



WINDING DIAGRAM

ARK-LES UNCONTROLLED



FABRICATED TERMINAL STRIP
SCALE: 1"=1"

PROD. REL.	9603	11-3-65	R.J.	TOLERANCES UNLESS OTHERWISE SPECIFIED:		
QUOTE REL.	88087	4-3-64	H.K.	DECIMALS ± .010	METRIC ± 0.25 mm	ANGLES ± 1°
DR.	P. PERROTTA 3-5-85			MATERIAL: SEE ABOVE TABLE		
CHK'D.	R.S.M.			FINISH: SEE ABOVE TABLE		
APP.	R.W.T. 3-13-85			PART NO.: 3500M76A/		
REV. C	REVISED & REDRAWN; ECR 5194	3-5-85	PJP	SUPERSEDES DWG. DATED: 4-3-64		
REV.	DESCRIPTION	DATE	DR.	SCALE: 2=1	F.M.F.	

ORIGINAL IF RED