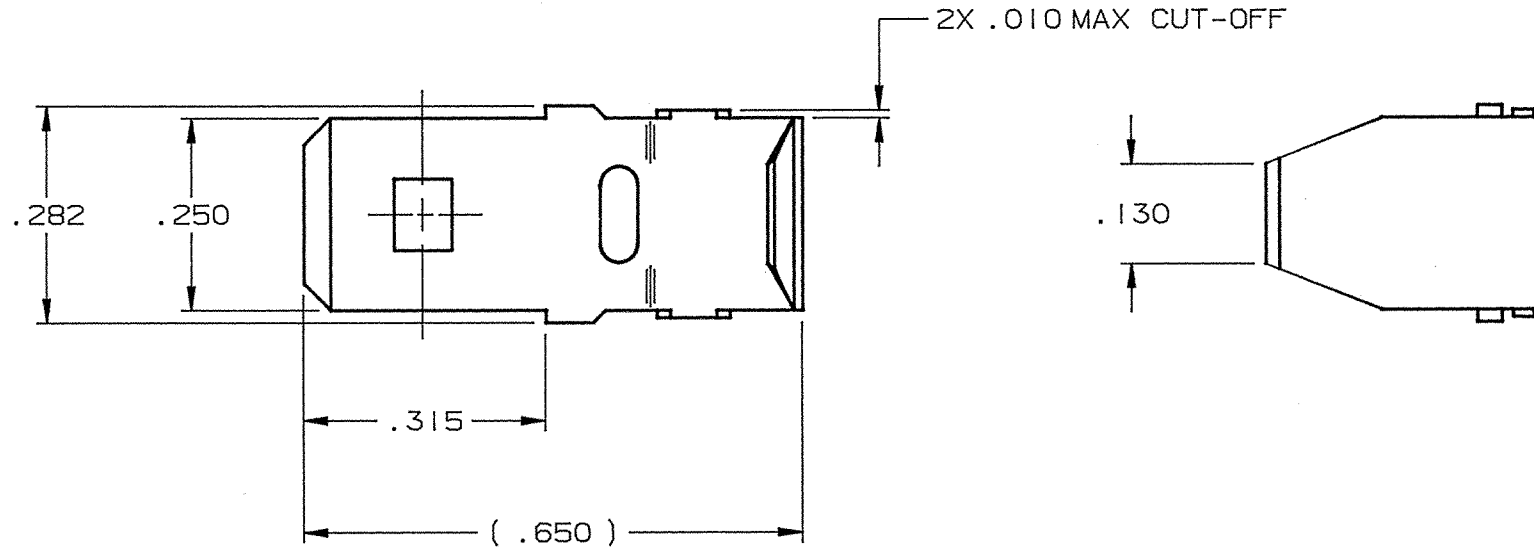


DEPT	
1	1
2	
3	
4	3
5	
6	
7	
8	
9	
10	
11	
12	
NC	
JZ	

PART NAME: MALE FLAG TERMINAL

PART NO: 3000M767A/

PART NUMBER	MATERIAL	FINISH
3000M767A	.032 THICK COPPER	PRETINNED
3000M767AB		NONE



- NOTES:
1. TO ACCEPT #10-#12 AWG WIRE.
 2. TO ACCEPT A STANDARD .250 X .032 FEMALE QUICK-CONNECT.
 3. RECOMMENDED STRIP LENGTH: 9/32 +/- 1/32.
 4. FOR LOOSE PIECE PARTS ADD THE SUFFIX "-1K" TO THE PART NUMBER. (I.E. 3000M767A-1K).
 5. MALE TAB MUST CONFORM TO UL 310.
 6. ALL CORNERS SHOWN SHARP MAY HAVE A .010 MAX. RADIUS.
 7. FOR STANDARD REELING SEE FIGURE 1.
 8. FOR REVERSE REELING ADD SUFFIX "R" TO PART NUMBER (i.e. 3000M767AR). SEE FIGURE 2.

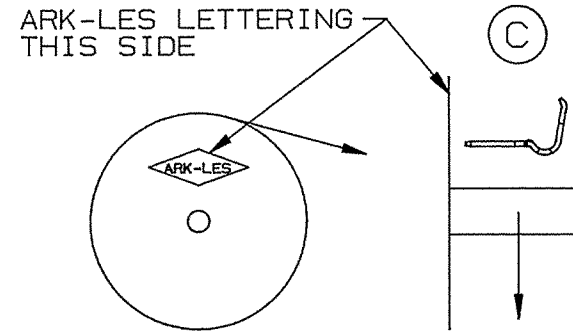
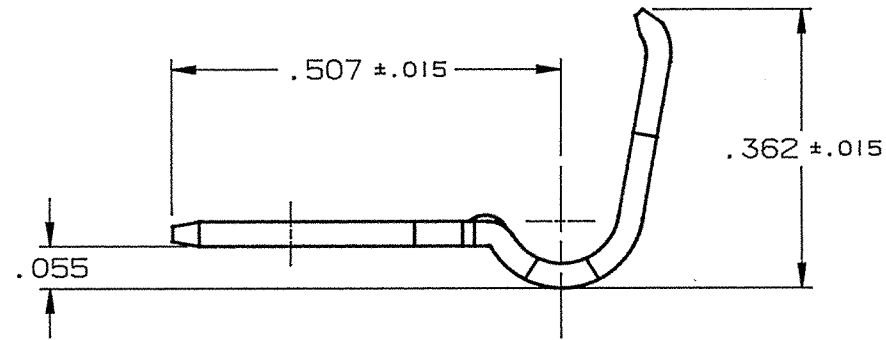


FIGURE 1
STANDARD REELING
(I.E. 3000M767A)

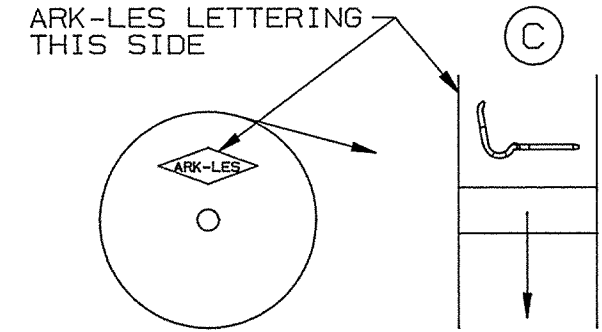
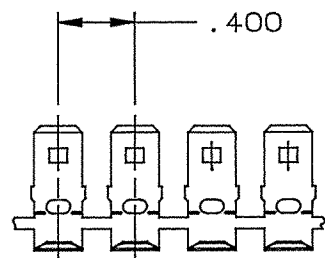


FIGURE 2
REVERSE REELING
(I.E. 3000M767AR)

ARK-LES
UNCONTROLLED



FABRICATED TERMINAL STRIP

SCALE 1=1

			PROD. REL. ECR10975	7/15/96	RT	TOLERANCES UNLESS OTHERWISE SPECIFIED:
			QUOTE REL.			DECIMALS ±.010 METRIC ±0.25mm ANGLES ±1°
			DR: B J CARUTHERS	7/10/96		MATERIAL: SEE TABLE
			CHK'D: R.W.T.	12-4-96		FINISH: SEE TABLE
C	REVISED PER ECR #11152	11/22/96	RT	APP: <i>col</i>	12-9-96	PART NO: 3000M767A/
B	PROD. REL. PER ECR #10975	7/10/96	BJC	SUPERCEDES DWG. DATED:		ORIGINAL
REV.	DESCRIPTION	DATE	DR.	SCALE: 4=1	CAD NO: BTP0042	

(B)