

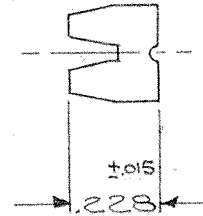
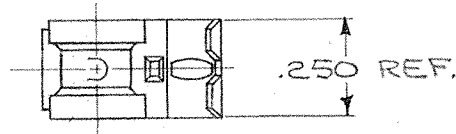
|        |   |
|--------|---|
| DEPT.  |   |
| 1      | 1 |
| 2      |   |
| 3      |   |
| 4      | 1 |
| 5      |   |
| 6      |   |
| 7      | 1 |
| 8      |   |
| 9      |   |
| 10     |   |
| 11     |   |
| 12     |   |
| TOOLED |   |

TERMINAL - FEMALE

CUSTOMER PRINT

|             |            |
|-------------|------------|
| PART NUMBER | FINISH     |
| 3620H69A    | PRE-TINNED |
| 3620H69AB   | NONE       |

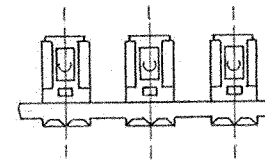
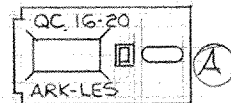
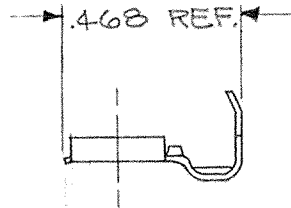
(A)



**ARK-LES**  
**UNCONTROLLED**

NOTE:

1. TO FIT .205 x .020 MALE TAB.
2. WIRE RANGE #16 - 20 GAUGE.



FABRICATED TERMINAL STRIP  
FULL SCALE

ORIGINAL IF RED

F.M.F.

|                 |                                   |          |      |                         |                |          |            |  |            |
|-----------------|-----------------------------------|----------|------|-------------------------|----------------|----------|------------|--|------------|
|                 |                                   |          |      | RELEASED FOR PRODUCTION | PER D.G.       | 12-10-74 | PC.        | TOLERANCES UNLESS OTHERWISE SPECIFIED: |            |
|                 |                                   |          |      | RELEASED FOR QUOTATION  |                |          |            | DECIMALS ±.010                         | ANGLES ±1° |
|                 |                                   |          |      | NEW DRAWING SUPERSEDES  |                |          |            | DO NOT SCALE DRAWING                   |            |
| A               | 3620H69AB / CHART ADDED           | 3/11/76  | K.S. | DRAWN BY                | PC.            | MATERIAL | .016 BRASS |  |            |
|                 | VIEW ADD. / QC STAMP ADD. DCR-756 |          |      | CHECKED BY              | R.T. 12/10/74  |          |            |  |            |
|                 | REVISIONS                         | DATE     | APP. | APPROVED BY             | B. S. 12/10/74 | FINISH   | PRE-TINNED |  |            |
| DATE OF DRAWING |                                   | 12-10-74 |      | SCALE                   |                | Z TO 1   |            | DATE OF PRINT                          |            |