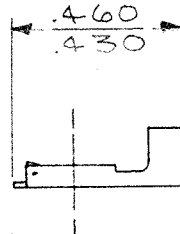
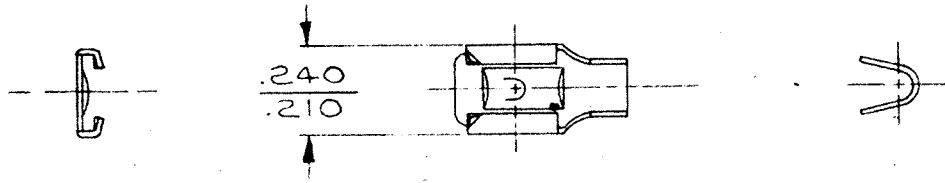


DEPT.	
1	
2	
3	
4	1
5	
6	
7	1
8	
9	
10	
11	
12	
TOOLED	

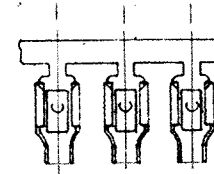
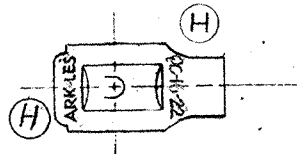
TERMINAL - FEMALE

CUSTOMER PRINT

PART NO.	MAT'L & FINISH
3500H63EB-2	PLAIN BRASS



- NOTES:
1. TO ACCEPT STANDARD .187 x .020 MALE TAB.
 2. WIRE RANGE: #16-22
 3. FOR LOOSE PIECE ADD -1



ARK-LES
UNCONTROLLED
ORIGINAL IF RED

FABRICATED TERMINAL STRIP
FULL SCALE

				RELEASED FOR PRODUCTION		A.R.F.	10-17-68	L.C.	TOLERANCES UNLESS OTHERWISE SPECIFIED:	
				RELEASED FOR QUOTATION					DECIMALS ±.010	ANGLES ±1°
				NEW DRAWING SUPERSEDES			10-17-68		DO NOT SCALE DRAWING	
H	DIE STAMPING RELOCATED DCR#1065	11-3-76	S.J.	DRAWN BY	P.C.	MATERIAL	.014 THICK BRASS			
G	REDRAWN - NO CHANGES	5-23-75	P.C.	CHECKED BY	R.M.	FINISH	PRE-TINNED.			
REVISIONS		DATE	APP.	APPROVED BY	Bishop					
DATE OF DRAWING		5-23-75		SCALE		2 tol		DATE OF PRINT		