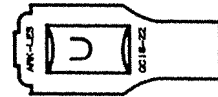
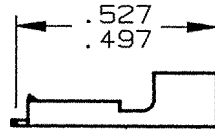
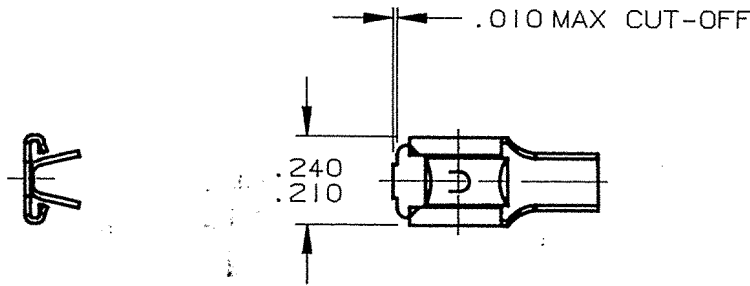


DEPT	
1	1
2	
3	
4	3
5	
6	
7	
8	
9	
10	
11	
12	
NC	
JZ	

PART NAME: FEMALE TERMINAL

PART NO:
3500H62A/

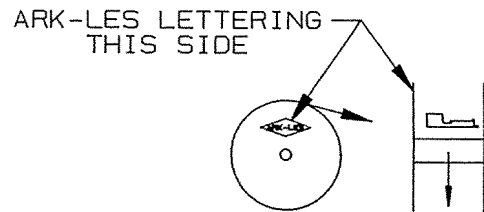
PART NUMBER	MATERIAL	FINISH
3500H62A	.014 THICK BRASS	PRETINNED
3500H62AB	.014 THICK BRASS	NONE



ARK-LES UNCONTROLLED

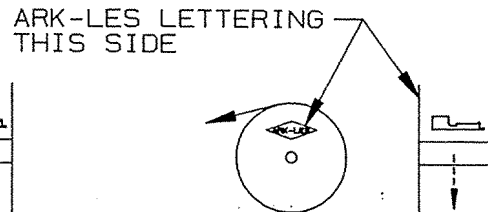
NOTES:

1. TO ACCEPT A .187 X .020 MALE TAB.
2. TO ACCOMMODATE #16 - #22 GAUGE WIRE.
3. RECOMMENDED STRIP LENGTH: 3/16 ± 1/32
4. GAUGE DIMENSIONS ARE FOR REFERENCE ONLY. 1ST INSERTION TO BE 5.0 - 9.0 LBS WHEN USING MALE TEST TAB 3500M32A OR EQUIVALENT. ALL OTHER FORCES TO COMPLY WITH UL 310.
5. FOR LOOSE PIECE PARTS ADD SUFFIX "-1" TO PART NUMBER. (i.e. 3500H62A-1)
6. FOR STANDARD REELING SEE FIGURE 1.
7. FOR REVERSE REELING ADD SUFFIX "R" TO PART NUMBER. (i.e. 3500H62AR) SEE FIGURE 2.



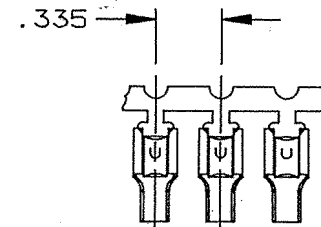
STANDARD REELING
(I.E. 3500H62A)

FIGURE 1



REVERSE REELING
(I.E. 3500H62AR)

FIGURE 2



FABRICATED TERMINAL STRIP

SCALE 1=1

				PROD. REL.	58267	1/30/70	RIS	TOLERANCES UNLESS OTHERWISE SPECIFIED:		
				QUOTE REL.				DECIMALS ±.010	METRIC ±0.25mm	ANGLES ±1°
				DR:	R. TASTULA	2/23/96		MATERIAL: SEE TABLE		
				CHK'D:	R.W.T.	2-23-96		FINISH: SEE TABLE		
				APP:	Cor	2-23-96		PART NO: 3500H62A/		
T	REVISED & REDRAWN PER ECR •10811	2/23/96	RT	SUPERCEDES DWG. DATED:	12/8/95					
REV.	DESCRIPTION	DATE	DR.	SCALE: 2=1	CAD NO: ATU0035					

ORIGINAL IF RED