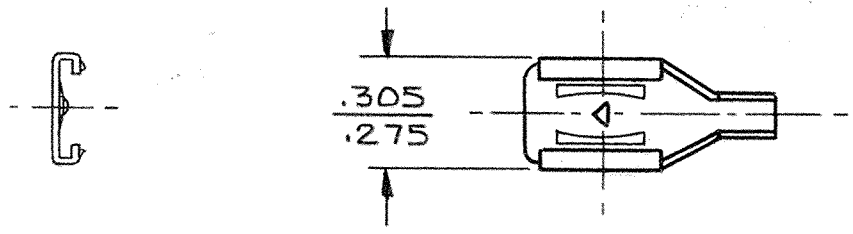
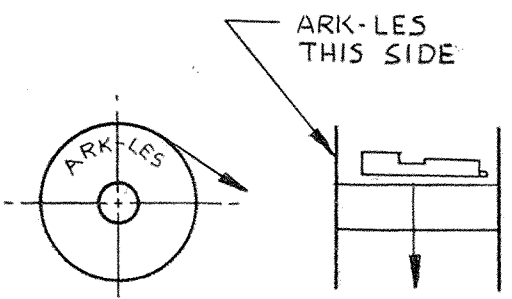
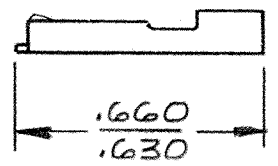


DEPT	PART NAME: <u>TERMINAL, FEMALE</u>	PART NO. <u>3000H219/-5-2</u>
1		
2		
3		
4		
5		
6		
7		
8		
9		
10		
11		
12		
ME.		
RED		

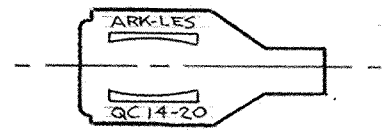
PART NO	MATERIAL	FINISH
3000H219A-5-2	.016 THK BRASS	PRE-TIN
3000H219AB-5-2	.016 THK BRASS	NONE



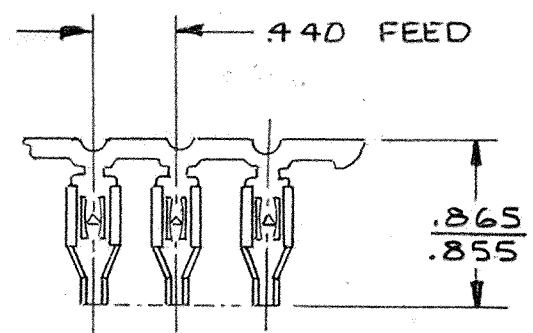
- NOTES:**
1. TO FIT STANDARD .250X.032 MALE TAB.
 2. WIRE RANGE #14-20
 3. RECOMMENDED STRIP LENGTH $9/32 \pm 1/32$.
 4. FOR LOOSE PIECE PARTS, ADD -1 TO PART NO.



WINDING DIAGRAM



ARK-LES UNCONTROLLED



FABRICATED TERMINAL STRIP
SCALE: FULL

			PROD. REL. ECR1403	11-1-77	JJB	TOLERANCES UNLESS OTHERWISE SPECIFIED :		
			QUOTE REL			DECIMALS ± .010	METRIC ± 0.25 mm	ANGLES ± 1°
			DR. : P. PERROTTA	6-24-87		MATERIAL: SEE TABLE		
			CHK'D. : R.W.T.	6-25-87		FINISH: SEE TABLE		
			APP. <i>Bishop</i>	6-26-87		PART NO: 3000H219/-5-2		
D	REDRAWN.. ECR 6280	6-24-87	PJP	SUPERSEDES DWG. DATED: 4-19-83				
REV.	DESCRIPTION	DATE	DR.	SCALE: ZX	F.M.F.			

ORIGINAL IF RED