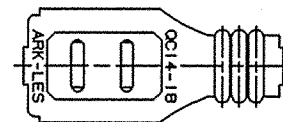
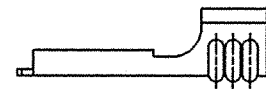
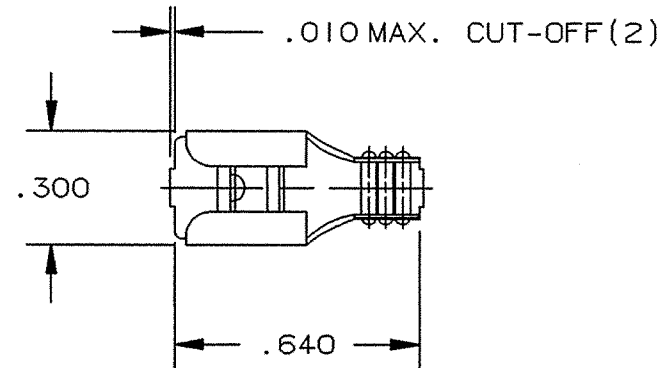


DEPT	
1	1
2	
3	
4	2
5	
6	
7	
8	
9	
10	
11	
12	
NC	
JZ	

PART NAME: FEMALE TERMINAL

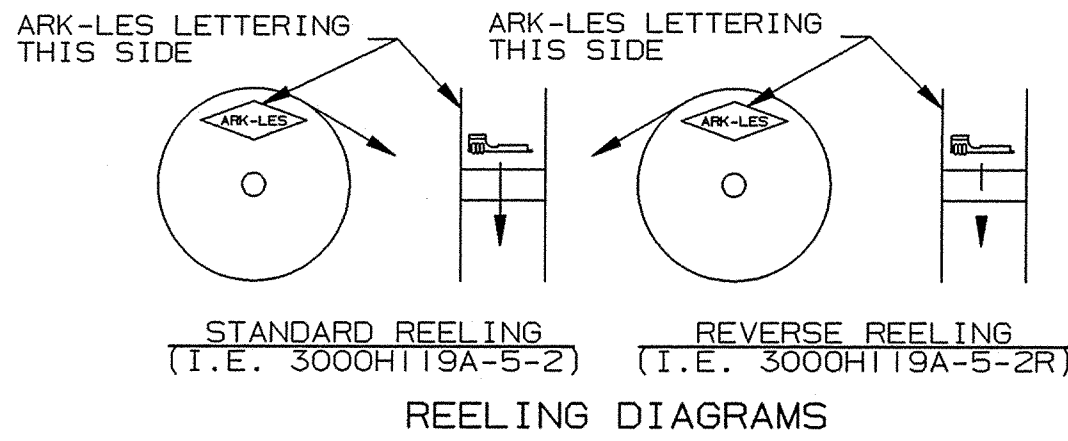
PART NO: 3000H119/-5-2

PART NUMBER	MATERIAL	FINISH	Q.C. STAMP
3000H119A-5-2	.016 ±.0005 THK. BRASS PRETINNED	SEE MAT'L	YES
3000H119AB-5-2	.016 ±.0005 THK. BRASS	NONE	YES

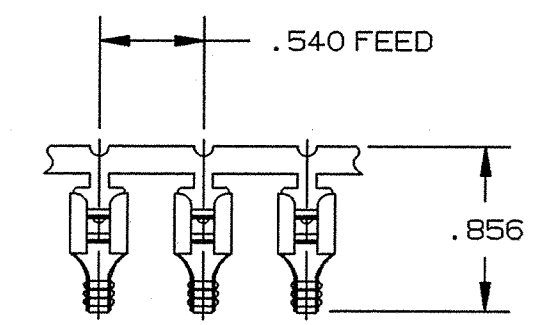


- NOTES:
1. TERMINAL WILL ACCEPT STANDARD .250 X .032 MALE TAB.
  2. TO ACCEPT #14-#18 GAUGE WIRE.
  3. RECOMMENDED STRIP LENGTH: 7/32 ±1/32.
  4. FOR TERMINALS LOOSE PIECE SEE 3000H119/-5-2-1K.  
(FOR LOOSE PIECE PRE-FORMED WIRE GRIP ONLY)
  5. FOR REVERSE REELING ADD SUFFIX "R" TO PART NUMBER AS SHOWN.
  6. FOR PAPER INTERLEAVING ADD SUFFIX "K" TO PART NUMBER.  
(I.E. 3000H119A-5-2K).

(S)



**ARK-LES**  
**UNCONTROLLED**



FABRICATED TERMINAL STRIP

SCALE: FULL

			PROD. REL.	94143	10/1/73	PC	TOLERANCES UNLESS OTHERWISE SPECIFIED:		
			QUOTE REL.				DECIMALS ±.010	METRIC ±0.25mm	ANGLES ±1°
			DR:	R. TASTULA	1/15/01		MATERIAL: SEE TABLE		
			CHK'D:	R.W.T.	1-19-01		FINISH: SEE TABLE		
			APP:	<i>Bishop</i>	3-29-01		PART NO: 3000H119/-5-2		
S	REVISED PER ECR #12128	1/15/01	RT	SUPERCEDES DWG. DATED:	5/6/92				
REV.	DESCRIPTION	DATE	DR.	SCALE: 2:1	CAD NO: BT00025				

ORIGINAL IF RED