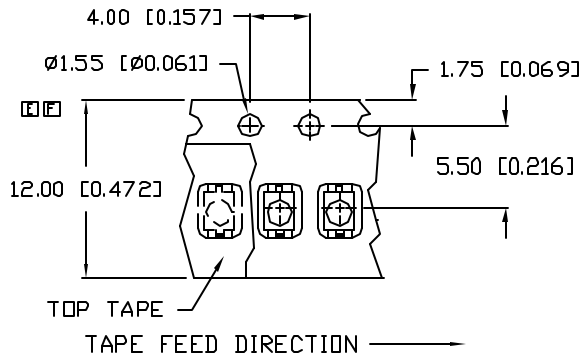
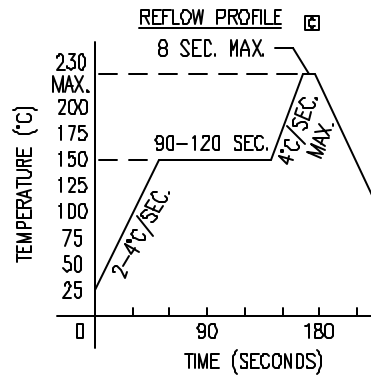
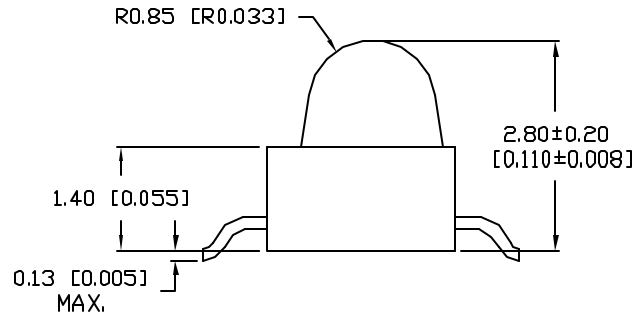
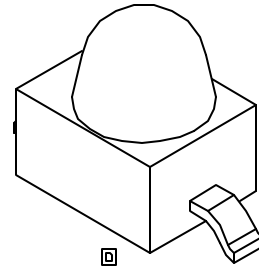
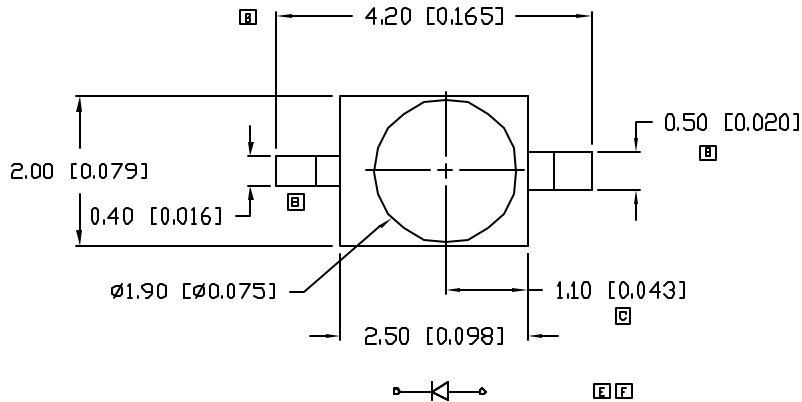
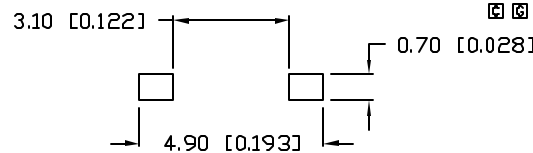


UNCONTROLLED DOCUMENT



RECOMMENDED SOLDER PAD LAYOUT



PART NUMBER  
SSL-LXA228SRC-TR11

REV.

I

| REV. | E.C.N. NUMBER AND REVISION COMMENTS    | DATE     |
|------|--|----------|
| A    | CHG'D LENS LOCATION TO FIT SR STYLE.   | 10.12.95 |
| B    | ADDED LEAD WIDTHS, UPDATED LEAD O.A.L. | 11.7.95  |
| C    | E.C.N. #10550. & #10BRDR               | 10.21.99 |
| D    | E.C.N. #10695.                         | 1.1.01   |
| E    | E.C.N. #10744.                         | 5.31.01  |
| F    | E.C.N. #10784.                         | 9.7.01   |
| G    | E.C.N. #11146.                         | 7.8.04   |
| H    | E.C.N. #11170.                         | 9.23.04  |
| I    | E.C.N. #11148.                         | 11.15.06 |

ELECTRO-OPTICAL CHARACTERISTICS  $T_A=25^\circ\text{C}$   $I_f=20\text{mA}$

| PARAMETER          | MIN         | TYP | MAX | UNITS      | TEST COND            |
|--------------------|-------------|-----|-----|------------|----------------------|
| PEAK WAVELENGTH    |             | 660 |     | nm         |                      |
| FORWARD VOLTAGE    |             | 1.7 | 2.2 | $V_f$      |                      |
| REVERSE VOLTAGE    | 5.0         |     |     | $V_r$      | $I_f=100\mu\text{A}$ |
| AXIAL INTENSITY    |             | 600 |     | med        | $I_f=20\text{mA}$    |
| VIEWING ANGLE      |             | 25  |     | $2x$ theta |                      |
| EMITTED COLOR:     | RED         |     |     |            |                      |
| EPOXY LENS FINISH: | WATER CLEAR |     |     |            |                      |

LIMITS OF SAFE OPERATION AT  $25^\circ\text{C}$

| PARAMETER                      | MAX        | UNITS                |
|--------------------------------|------------|----------------------|
| PEAK FORWARD CURRENT*          | 180        | mA                   |
| STEADY CURRENT                 | 25         | mA                   |
| POWER DISSIPATION              | 60         | mW                   |
| DERATE FROM $25^\circ\text{C}$ | -1.2       | mW/ $^\circ\text{C}$ |
| OPERATING TEMP.                | -40 TO +85 | $^\circ\text{C}$     |
| STORAGE TEMP.                  | -40 TO +85 | $^\circ\text{C}$     |

\*  $t < 10\mu\text{s}$

NOTES:

- 1,000 PIECES PER REEL.
- THE CATHODE IS ORIENTED TOWARDS THE TAPE SPROCKET HOLE.



UNCONTROLLED DOCUMENT

\*UNLESS OTHERWISE SPECIFIED TOLERANCES PER DECIMAL PRECISION ARE: X=±1 (±0.039), XX=±0.5 (±0.020), XXX=±0.25 (±0.010), XXXX=±0.127 (±0.005). LEAD SIZE=±0.05 (0.002), LEAD LENGTH=±0.75 (±0.030), MIN.= +DECIMAL PRECISION -0.00, MAX.= +0.00 -DECIMAL PRECISION

| REV.   | PART NUMBER        |
|--|--------------------|
| I  | SSL-LXA228SRC-TR11 |
| AXIAL LED, GULL WING LEADS,<br>660nm SUPER RED, WATER CLEAR LENS, TAPE AND REEL. |                    |

**CONFIDENTIAL INFORMATION**  
THE INFORMATION CONTAINED IN THIS DOCUMENT IS THE PROPERTY OF LUMEX INC. EXCEPT AS SPECIFICALLY AUTHORIZED IN WRITING BY LUMEX INC., THE HOLDER OF THIS DOCUMENT SHALL KEEP ALL INFORMATION CONTAINED HEREIN CONFIDENTIAL AND SHALL PROTECT SAME IN WHOLE OR IN PART FROM DISCLOSURE AND DISSEMINATION TO ALL THIRD PARTIES.

**RELIABILITY NOTE**  
OUR MANY YEARS OF EXPERIENCE DATA ACCUMULATION INDICATE THAT SOLDER HEAT IS A MAJOR CAUSE OF EARLY AND FUTURE FAILURE. PLEASE PAY ATTENTION TO YOUR SOLDERING PROCESS.

|                 |             |   |
|-----------------|-------------|---|
|                 |             | 290 E. HELEN ROAD<br>PALATINE, IL 60067-6976<br>PHONE: +1.847.359.2790<br>US WEB: www.lumex.com<br>TW WEB: www.lumex.com.tw |
| DRAWN BY:<br>jc | CHECKED BY: | APPROVED BY:  |
|                 |             | DATE: 11.15.06<br>PAGE: 1 OF 1<br>SCALE: N/A  |