ELECTRO-OPTICAL CHARACTERISTICS $T_A=25^\circ\text{C}$ $I_f=500\text{mA}$

PARAMETER	MIN	TYP	MAX	UNITS	TEST COND
DOM. WAVELENGTH		635		nm	
FORWARD VOLTAGE	2.0	2.7	3.3	V_f	$I_f = 500\text{mA}$
REVERSE VOLTAGE	5.0			V_r	$I_r = 100\mu\text{A}$
AXIAL INTENSITY	35	50	60	lm	$I_f = 500\text{mA}$
VIEWING ANGLE		100		2x theta	
EMITTED COLOR:	RED				
EPOXY LENS FINISH:	WATER CLEAR				

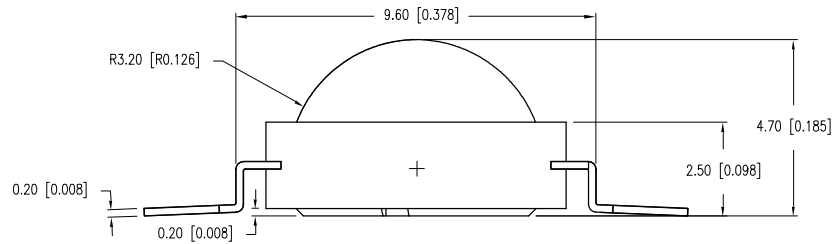
LIMITS OF SAFE OPERATION AT 25°C

PARAMETER	MAX	UNITS
PEAK FORWARD CURRENT*	700	mA
STEADY CURRENT	500	mA
LED JUNCTION TEMPERATURE	110	$^\circ\text{C}$
THERMAL RESISTANCE	12	$^\circ\text{C/W}$
OPERATING, STORAGE TEMP.	-40 TO +100	$^\circ\text{C}$

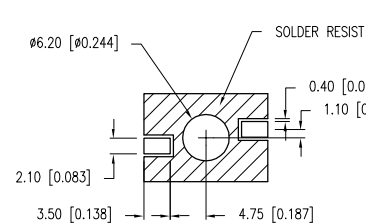
* $T < 10\mu\text{s}$

[A] NOTE:

1. WE RECOMMEND THAT THE DEVICES MUST BE BAKED BEFORE SOLDERING IF THEY ARE REMOVED FROM THE ORIGINAL PACKAGE, AND ARE EXPOSED TO ENVIRONMENTAL CONDITIONS FOR LONGER THAN THE DURATIONS; (UNIT: DAYS) DEFINED IN THE TABLE BELOW.
2. RECOMMENDED BAKING CONDITIONS ARE 24 HOURS AT 80°C



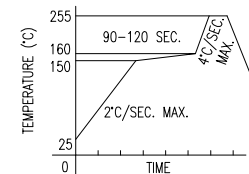
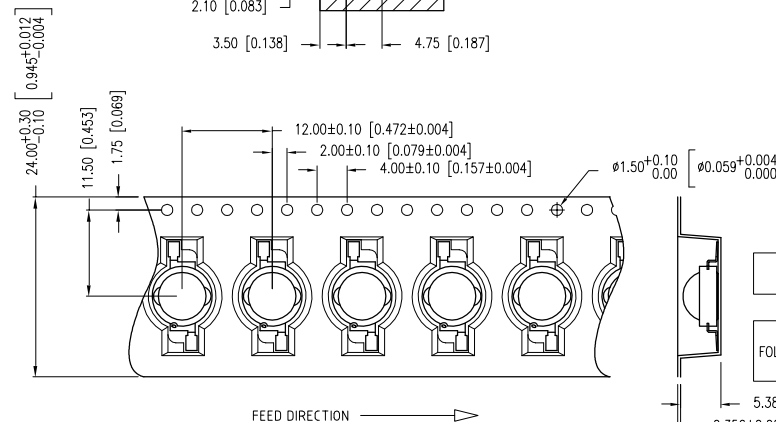
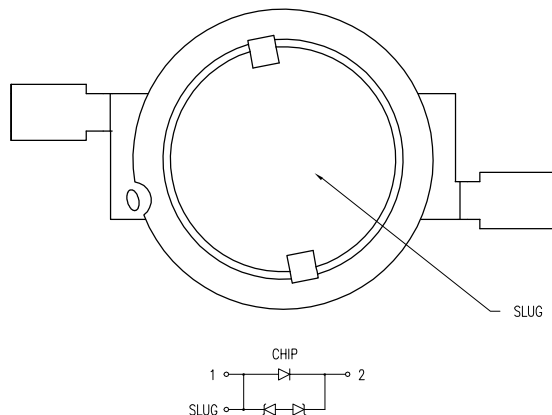
PAD LAYOUT



A	TEMPERATURE	MAXIMUM PERCENT RELATIVE HUMIDITY						
		30%	40%	50%	60%	70%	80%	90%
6] 043]	30°C	9	5	4	3	1	1	1
	25°C	12	7	5	4	2	1	1
	20°C	17	9	7	6	2	2	1

LEAD FREE REFLOW PROFILE

10 SEC. MAX.

TOTAL TIME ABOVE 220°C IS 60 SECONDS MAX.CAUTION: MOISTURE SENSITIVE DEVICE
PER JEDEC LEVEL 3 STANDARDSCAUTION: STATIC SENSITIVE DEVICE
FOLLOW PROPER E.S.D. HANDLING PROCEDURES
WHEN WORKING WITH THIS PART.5.38 ± 0.10 [0.212 ± 0.004]
0.356 ± 0.02 [0.014 ± 0.001]*UNLESS OTHERWISE SPECIFIED TOLERANCES PER DECIMAL PRECISION ARE: X= ± 1 (± 0.039), X.X= ± 0.5 (± 0.020), X.XX= ± 0.25 (± 0.010), X.XXX= ± 0.127 (± 0.005). LEAD SIZE= ± 0.05 (± 0.002), LEAD LENGTH= ± 0.75 (± 0.030). MIN.= +DECIMAL PRECISION -0.00 MAX.= +0.00 -DECIMAL PRECISION