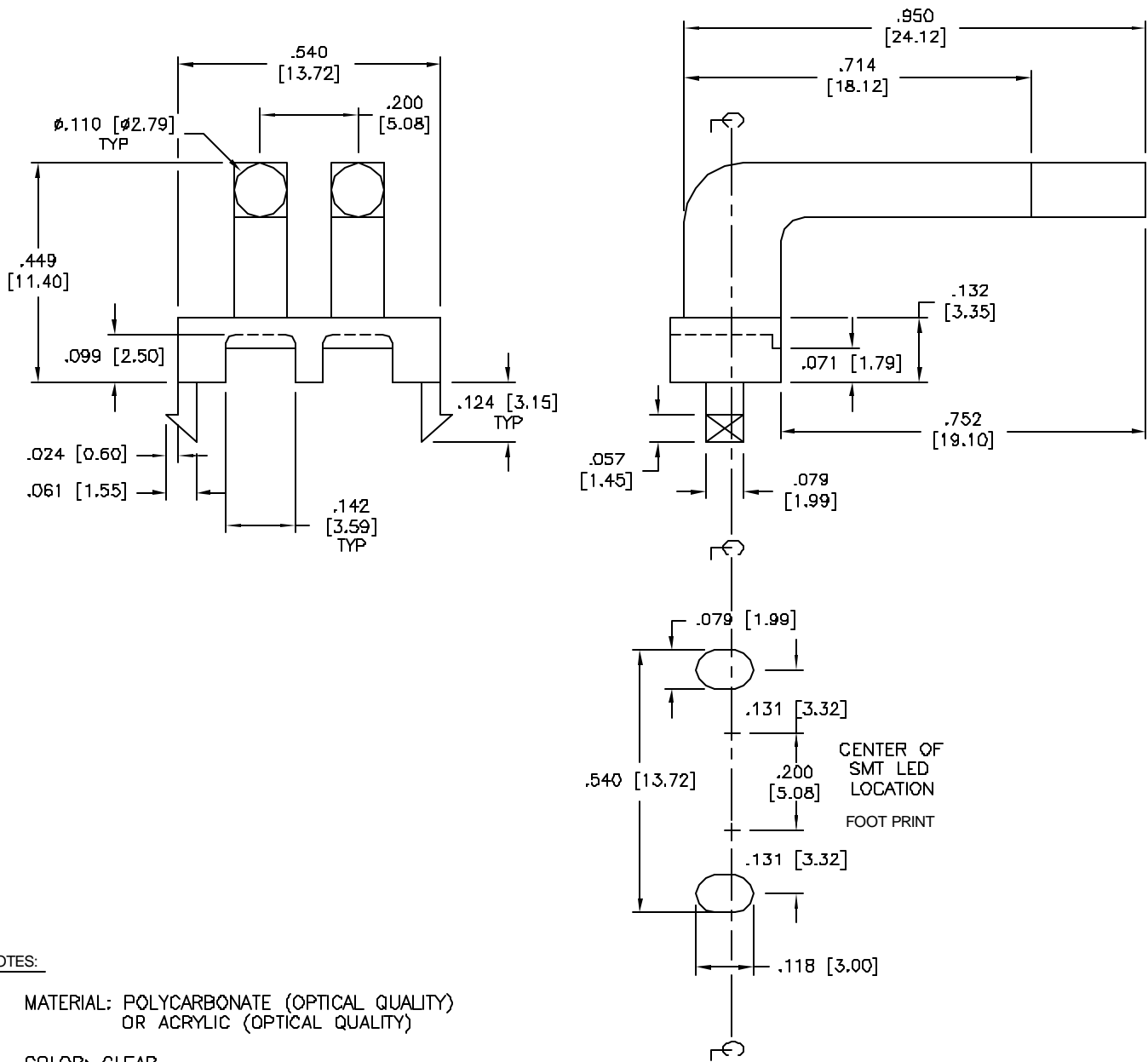


LTR	REVISION	DATE	APPD
-	RELEASED	07-18-00	
A	RVSD PER ECR 080200-RM01	08-02-00	RM
B	RVSD PER ECR 081700-RM01	08-17-00	RM
C	RVSD PER ECR 082500-RM01	08-25-00	RM



- NOTES:
1. MATERIAL: POLYCARBONATE (OPTICAL QUALITY)
OR ACRYLIC (OPTICAL QUALITY)
 2. COLOR: CLEAR
 3. PROCESS: INJECTION MOLDING
 4. FINISHED PRODUCT TO CONTAIN NO CRACKS,
WELD LINES OR PARTIAL FILLS.



-PROPRIETARY-
This document contains Proprietary
Information of LEDTRONICS, INC.
It may not be copied, used or disclosed
for any purpose without the prior express
written consent of LEDTRONICS, INC.

.XX ± .010 TOLERANCE PER ANSI-Y14.5
.XX ± .025 (UNLESS OTHERWISE STATED)
ANGLES ± 0°.30° ALL DIMENSIONS
FRACT. ± 1/32 IN INCHES [mm].

TITLE				LTP004-0CW-121			
DWG NO		SCALE		SHEET		DATE	
CMMS0162		3:1		1 OF 1		07-18-00	
CODE IDENT NO.	DWG BY	CHK BY	QA	MFG	CUSTOMER		
8Z410	RM		JCH	RA			
			08-28-00	08-28-00			