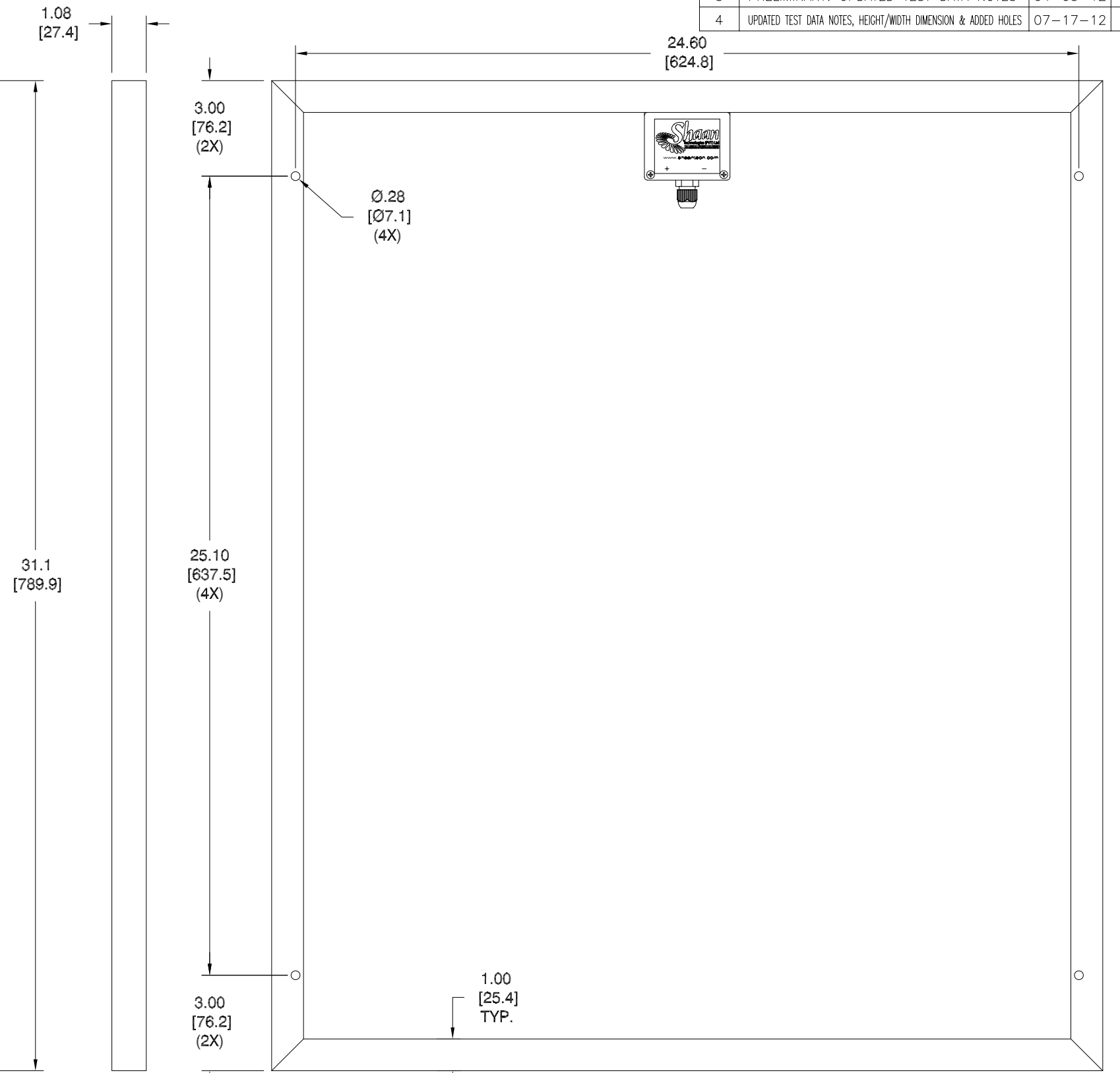
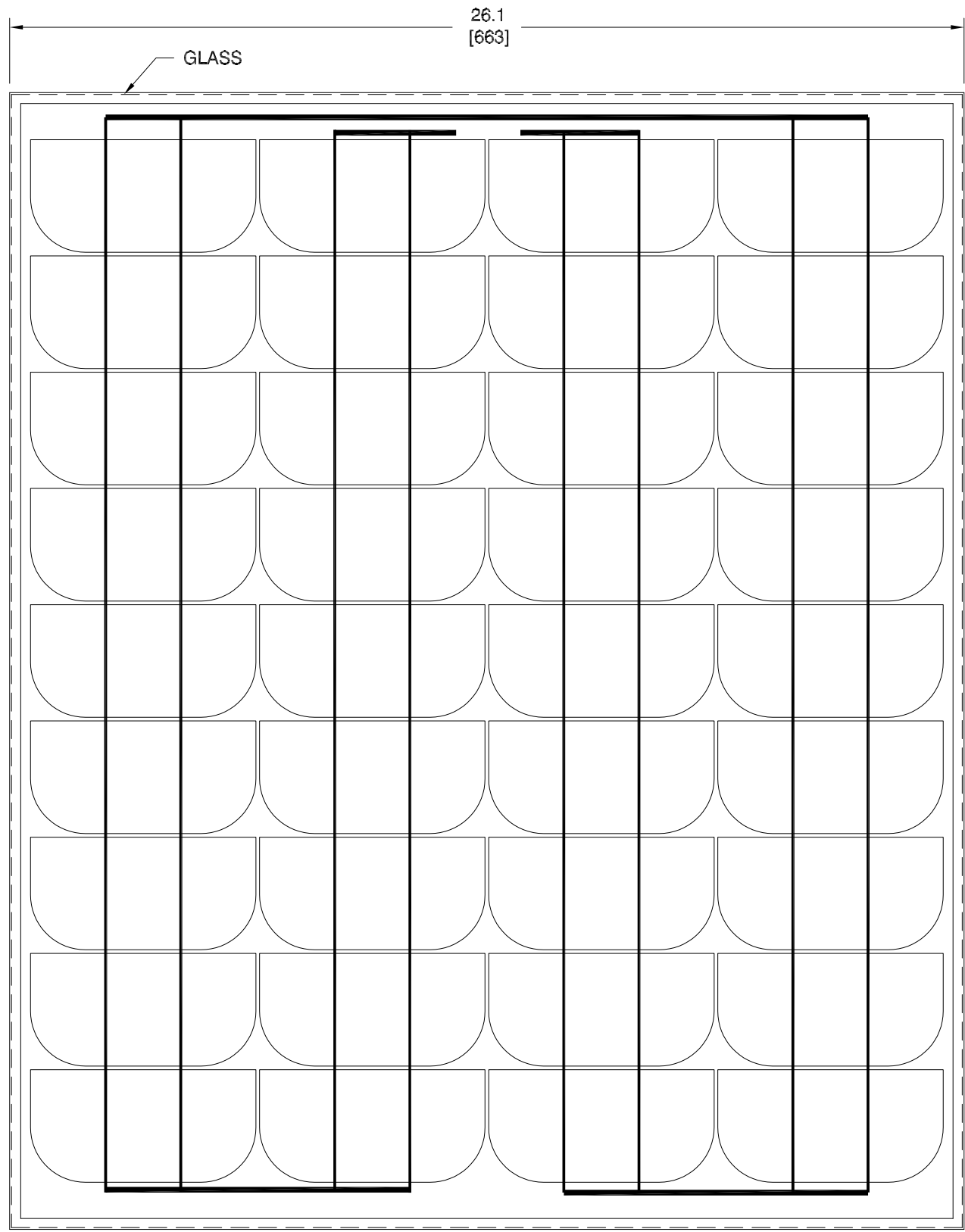


LTR	REVISION	DATE	APPD
1	PRELIMINARY	04-28-11	
2	PRELIMINARY: PART NUMBER CHANGED	06-22-11	GP
3	PRELIMINARY: UPDATED TEST DATA NOTES	04-03-12	GP
4	UPDATED TEST DATA NOTES, HEIGHT/WIDTH DIMENSION & ADDED HOLES	07-17-12	GP



TESTING DATA

MAXIMUM POWER RATING P_{max}: 69.0 WATTS
 RATED CURRENT I_{max}: 4.60 AMPS
 RATED VOLTAGE V_{max}: 15.00 VOLTS
 OPEN CIRCUIT VOLTAGE V_{oc}: 21.5 VOLTS
 SHORT CIRCUIT CURRENT I_{sc}: 4.80 AMPS

STANDARD TEST CONDITIONS:

IRRADIANCE LEVEL: 1000 W/m
 CELL TEMPERATURE 25°C

NOTES:

WEIGHT: 5.80kg (12.77 lbs.)

 LEDTRONICS,™ INC. 23105 KASHIWA COURT TORRANCE, CA 90505	-PROPRIETARY- This document contains Proprietary information of LEDTRONICS,™ INC. It may not be copied, used or disclosed for any purpose without the prior express written consent of LEDTRONICS,™ INC.		TITLE SLR-PNL-50W-101	
	.XXX ± .010 .XX ± .025 ANGLES ± 0°.30' FRACT. ± 1/32	TOLERANCE PER ANSI-Y14.5 (UNLESS OTHERWISE STATED)		DWG NO SLPNL-50W-101-CUST
	SHEET 1 OF 1	DATE 04-28-11	CODE IDENT NO. 8Z410	DWG BY GP 04-28-11
	CHK BY PL 07-17-12	QA MFG	R&D BJ 07-17-12	