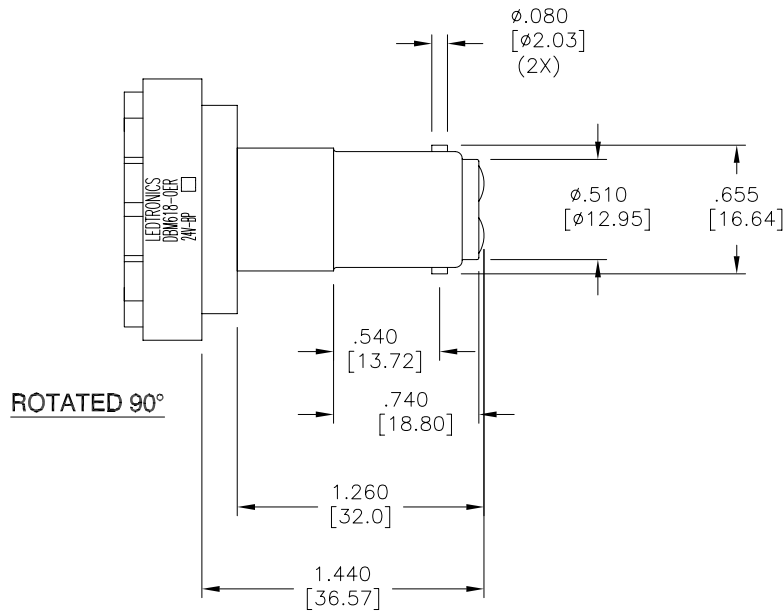
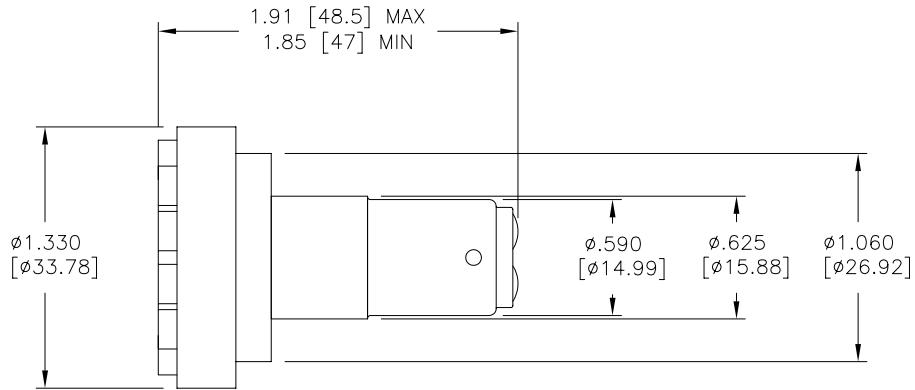


LTR	REVISION	DATE	APPD
-	RELEASED	03-24-11	



**NOTES:**

1. SLEEVE MATERIAL: RYNITE FR530
2. BASE MATERIAL: NICKEL PLATED BRASS WITH CERAMIC INSULATION.

REVISION NOTIFICATION

- PMA
- UL
- MADE IN USA
- CUSTOMER \_\_\_\_\_
- OTHER

DBM618-0BG-024W	BLUE GREEN	24	36	505
DBM618-0ER-024W	SUPER RED	24	36	637
LEDTRONICS PART NO.	COLOR EMITTED	INPUT VOLTAGE, V	READ mA typ.	λP nm
		ELECTRICAL TEST		

**LED**<sup>®</sup>  
LEDTRONICS,™ INC.  
23105 KASHIWA COURT  
TORRANCE, CA 90505

**-PROPRIETARY-**  
This document contains Proprietary information of LEDTRONICS, INC. It may not be copied, used or disclosed for any purpose without the prior express written consent of LEDTRONICS, INC.

.XXX ± .010 TOLERANCE PER ANSI-Y14.5 (UNLESS OTHERWISE STATED)  
.XX ± .025  
ANGLES ± 0°,30'  
FRACT. ± 1/32

TITLE <b>DBM618-0XX-024W</b>					
DWG NO DBM618-24V-BP	SCALE 1:1	SHEET 1 OF 1	DATE 03-24-11		
CODE IDENT NO. 8Z410	DWG BY GP 03-24-11	CHK BY PL 03-24-11	QA	MFG	R&D