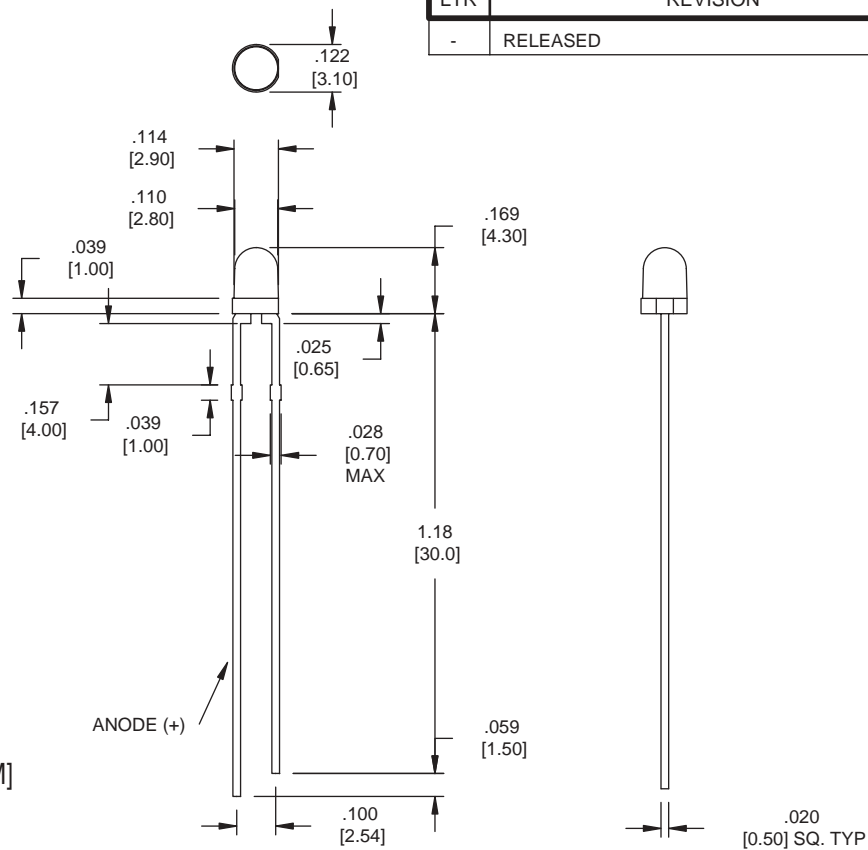


LTR	REVISION	DATE	APPD
-	RELEASED	09-27-05	



DIMENSIONS IN INCHES [MM]

1. ABSOLUTE MAXIMUM RATINGS (Ta=25°C)

ITEM	SYMBOL	RATINGS	UNIT
Forward Current (DC)	If	50	mA
Forward Current (Pulse)*1	Ifp	0.5	A
Reverse Voltage	VR		V
Power Dissipation	PD	120	mW
Operating Temp.	Topr	-20 TO 85	°C
Storage Temp.	Tstg	-30 TO 100	°C
Junction Temp.	T	100	°C
Lead Soldering Temp.*2	TIs	260	°C

Caution: Do not look directly into infrared light beams.
An IR camera is used to view IR LED illumination

*1:Tw=10uS,T=10mS

*2:Time 5 Sec max,Position:Up to 3mm from the body

2.ELECTRICAL & OPTICAL CHARACTERISTICS (Ta=25°C)

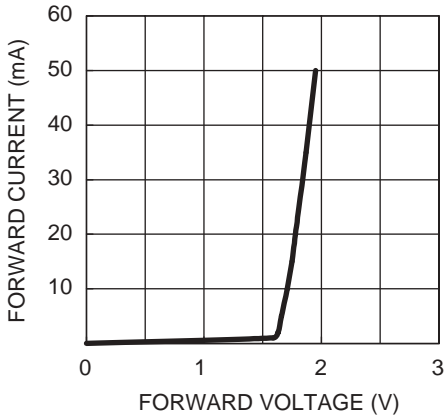
ITEM	SYMBOL	CONDITIONS	MIN	TYP	MAX	UNIT
Power Output	PO	If =20mA		4.5		mW
Forward Voltage	Vf	If =20mA		1.8	2.3	V
Reverse Current	Ir	VR=5V			100	µA
Peak Wavelength	λp	If =20mA		740		nm
Spectral Line Half Width	Δλ	If =20mA		30		nm
Half Intensity Beam Angle	2θ _{1/2}	If =20mA		25		deg.
Rise Time	Tr	Ifp =20mA				nS
Fall Time	Tf	Ifp =20mA				nS
Junction Capacitance	C	1MHz, V=0V		35		pF
Temp. Coefficient of PO	P/T	If =10mA		-0.6		%/°C
Temp. Coefficient of VF	V/T	If =10mA		-1.9		mV/°C

LED
LEDTRONICS INC
23105 KASHIWA COURT
TORRANCE, CA 90505

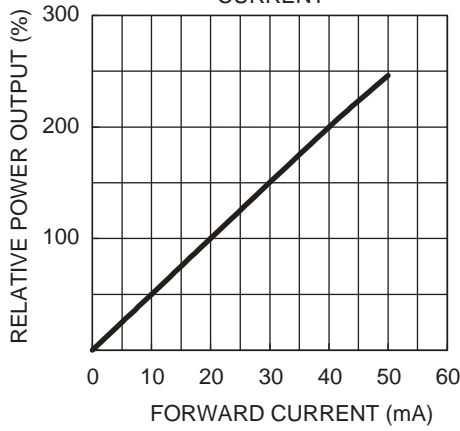
-PROPRIETARY-
This document contains Proprietary information of LEDTRONICS, INC. It may not be copied, used or disclosed for any purpose without the prior express written consent of LEDTRONICS, INC.
.XXX ± .010 TOLERANCE PER ANSI-Y14.5
.XX ± .025 (UNLESS OTHERWISE STATED)
ANGLES ± 0°30'
FRACT. ± 1/32

TITLE					
L120CWIR730-50D					
DWG NO	SCALE	SHEET	DATE		
DSDC0363	2:1	1 OF 2	09-27-05		
CODE IDENT NO.	DWG BY	CHK BY	QA PL	MFG GZ	CUSTOMER
8Z410	RM		09-27-05	09-28-05	

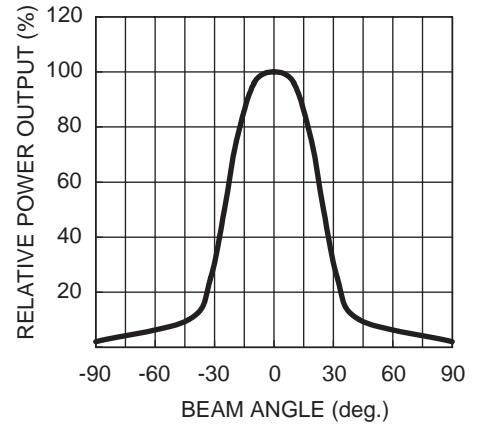
FORWARD I-V CHARACTERISTICS



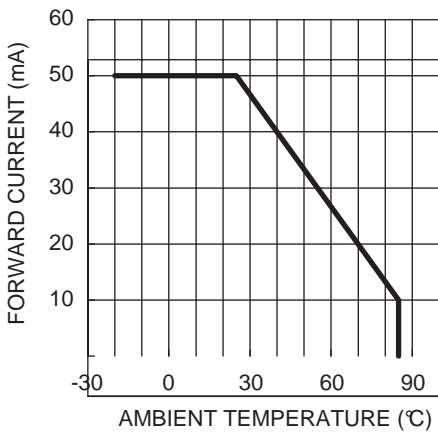
RELATIVE POWER vs FORWARD CURRENT



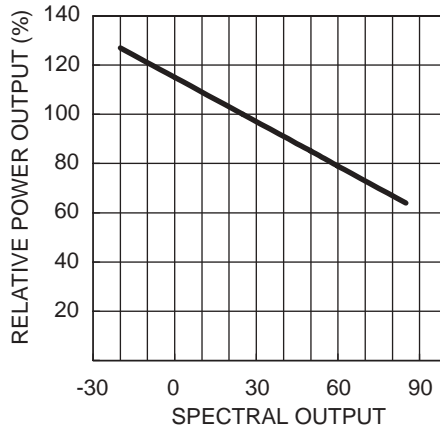
RADIATION PATTERN



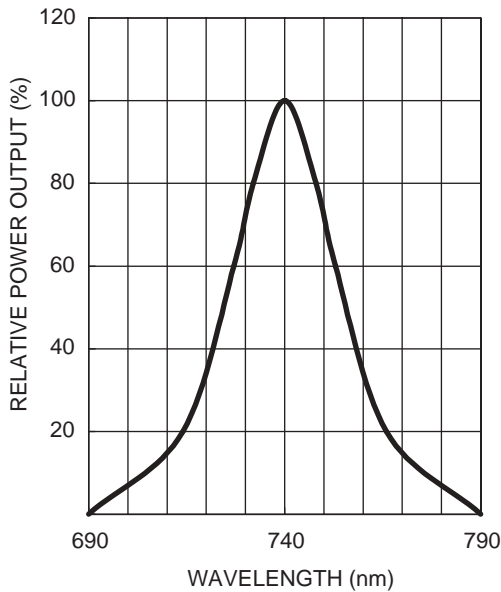
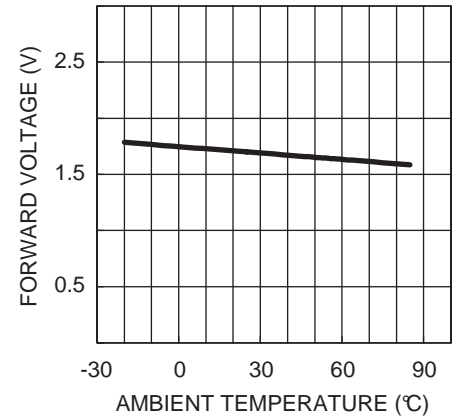
THERMAL DERATING CURVE



POWER OUTPUT vs TEMPERATURE
IF = 10mA



FORWARD VOLTAGE vs TEMPERATURE
IF = 10mA



LED
LEDTRONICS INC
23105 KASHIWA COURT
TORRANCE, CA 90505

-PROPRIETARY-
This document contains Proprietary information of LEDTRONICS, INC. It may not be copied, used or disclosed for any purpose without the prior express written consent of LEDTRONICS, INC.
TOLERANCE PER ANSI-Y14.5 (UNLESS OTHERWISE STATED)
.XXX ± .010
.XX ± .025
ANGLES ± 0°30'
FRACT. ± 1/32

TITLE L120CWIR730-50D							
DWG NO DSDC0363-A		SCALE 2:1		SHEET 2 OF 2		DATE 09-27-05	
CODE IDENT NO. 8Z410	DWG BY RM	CHK BY	QA	MFG	CUSTOMER		