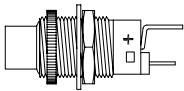
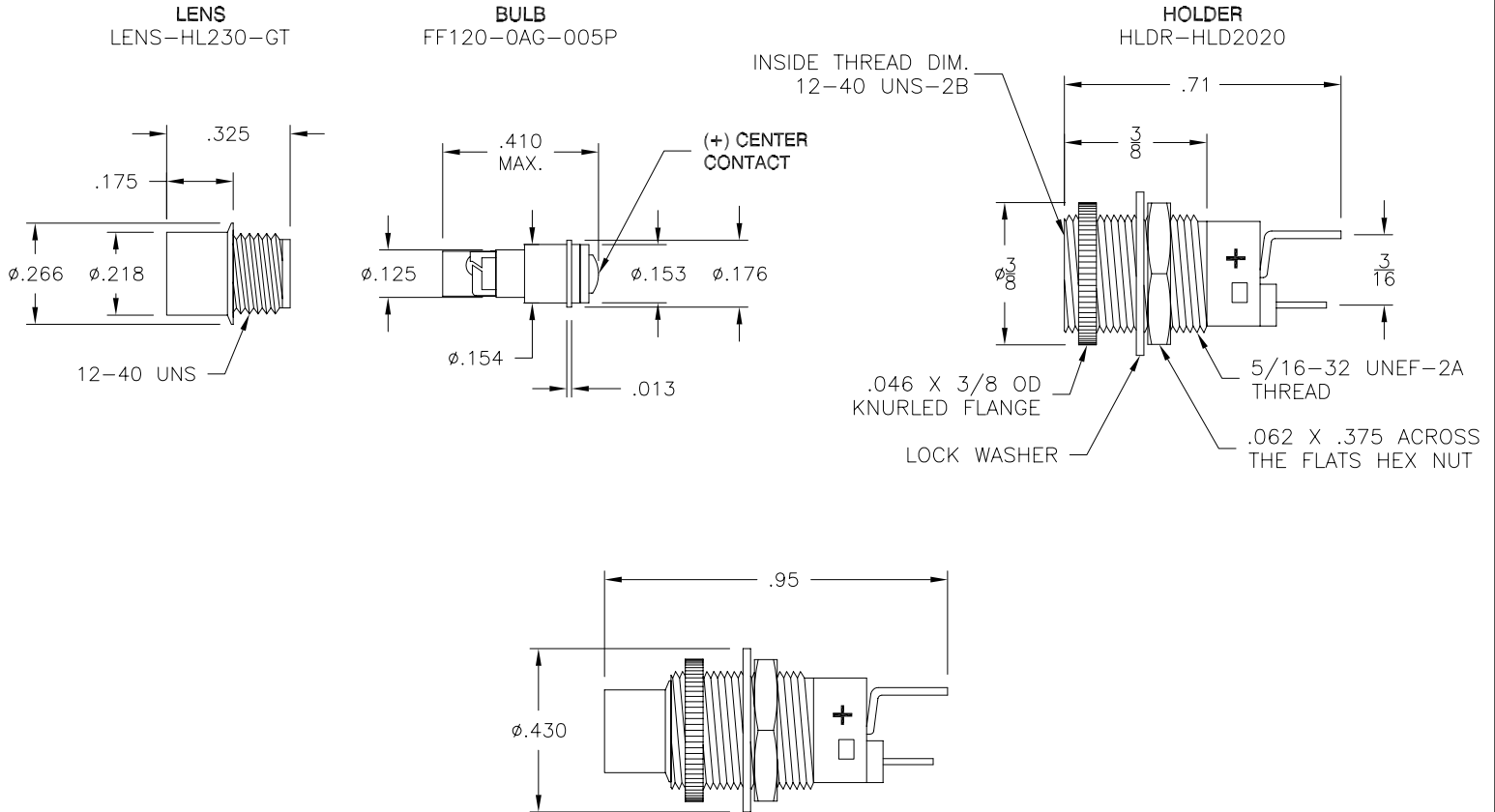


LTR	REVISION	DATE	APPD
A	SEE ECR#040312-GP01	04-03-12	GP



**ACTUAL SIZE**



**NOTES:**

1. MOUNTING DIAMETER:  $\varnothing 5/16"$

**BULB:**

1. SLEEVE MATERIAL: DELRIN.
2. BASE MATERIAL: NICKEL PLATED BRASS (BODY BASE) BAKELITE (INSULATOR).
3. RIVET CAP MATERIAL: BRASS, GRADE B, .0005 THK.  
FINISH: NICKEL PLATE PER MIL SPEC MIL-C-26074

**HOLDER:**

1. MATERIAL: CASE - BRASS, NICKEL PLATED  
MOUNTING HARDWARE - BRASS, NICKEL PLATED  
TERMINALS - BRASS, GOLD PLATED  
INSULATION - HIGH DIELECTRIC PLASTIC
2. FINISH: BLACK NICKEL



REVISION NOTIFICATION	
<input type="checkbox"/>	PMA
<input type="checkbox"/>	UL
<input type="checkbox"/>	MADE IN USA
<input type="checkbox"/>	CUSTOMER _____
<input type="checkbox"/>	OTHER

HLD310-0AG-005P	AQUA GREEN	5VDC	0.015 A	0.34 W	0.200cd	520	120°
LEDTRONICS PART NO.	COLOR EMITTED	INPUT VOLTAGE, V	CURRENT (A)	POWER (W)	MAXIMUM CANDELA	$\lambda P$ nm	VIEWING ANGLE (FULL BEAM WIDTH AT 50% INTENSITY)
		ELECTRICAL TEST					

**LED**<sup>®</sup>  
LEDTRONICS,™ INC.  
23105 KASHIWA COURT  
TORRANCE, CA 90505

**-PROPRIETARY-**  
This document contains Proprietary information of LEDTRONICS,™ INC. It may not be copied, used or disclosed for any purpose without the prior express written consent of LEDTRONICS,™ INC.

.XXX ± .010 TOLERANCE PER ANSI-Y14.5  
.XX ± .025 (UNLESS OTHERWISE STATED)  
ANGLES ± 0°,30'  
FRACT. ± 1/32

TITLE <b>HLD310-0AG-005P</b>							
DWG NO HLD310-5V-P		SCALE 2:1		SHEET 1 OF 1		DATE 03-25-11	
CODE IDENT NO. 8Z410	DWG BY GP 03-25-11	CHK BY	QA RD 04-03-12	MFG LD 04-03-12	R&D BJ 04-03-12		