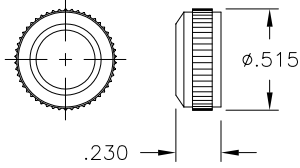
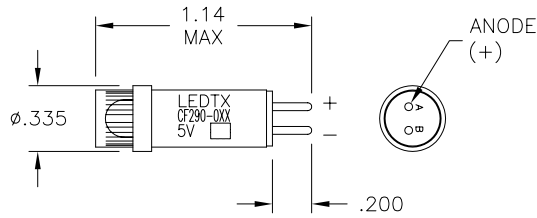


LTR	REVISION	DATE	APPD
-	RELEASED	06-06-11	

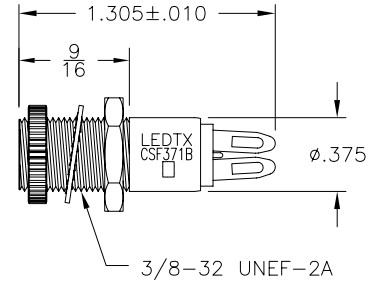
COLLAR
(COLLAR-RCS370B)



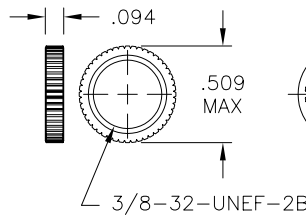
BULB
(CF290-XXX-005V)



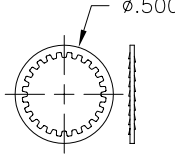
HOLDER
(HLDR-CSF371B)



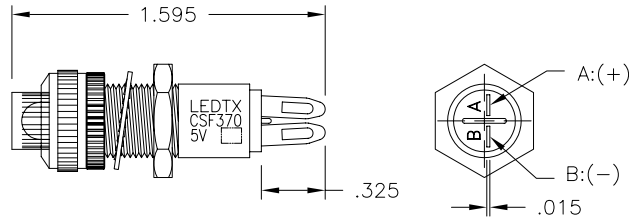
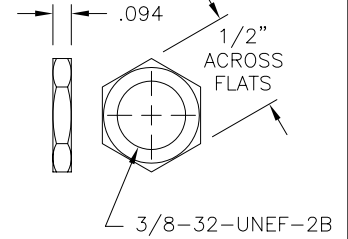
NUT-KN370B
(SEE BELOW)



LCKWSR-LW370
(SEE BELOW)



NUT-HN370
(SEE BELOW)



ASSEMBLED



NOTES:

1. MOUNTING DIAMETER: Ø3/8"
2. COLLAR MATERIAL: ALUMINUM, BLACK ANODIZED
3. NUT MATERIAL: ALUMINUM, BLACK ANODIZED
4. LOCKWASHER MATERIAL: #425 ALLOY BRONZE
5. NUT MATERIAL: 18-8 STAINLESS STEEL
6. SLEEVE MATERIAL: ALUMINUM, BLACK ANODIZED
7. HOLDER MATERIAL: INSULATOR - BLACK MOLDED PHENOLIC
TERMINAL: TIN PLATED BERYLLIUM COPPER

REVISION NOTIFICATION

<input type="checkbox"/>	PMA
<input type="checkbox"/>	UL
<input type="checkbox"/>	MADE IN USA
<input type="checkbox"/>	CUSTOMER _____
<input type="checkbox"/>	OTHER

CSF370-0AG-005V	AQUA GREEN	5VDC	15-20	660	521	120°
CSF370-0CW-005V	COOL WHITE	5VDC	15-20	-	8000K	120°
CSF370-0UG-005V	SUPER GREEN	5VDC	18-20	67	573	120°
CSF370-0UR-005V	ULTRA RED	5VDC	18-20	120	652	120°
CSF370-0UY-005V	SUPER YELLOW	5VDC	18-20	-	596	120°
LEDTRONICS PART NO.	COLOR EMITTED	INPUT VOLTAGE, V	If, mA (typ.)	Iv, mcd (typ.)	λP nm	VIEWING ANGLE (FULL BEAM WIDTH @ 50% INTENSITY)
		ELECTRICAL TEST				

LED[®]
LEDTRONICS,™ INC.
23105 KASHIWA COURT
TORRANCE, CA 90505

-PROPRIETARY-
This document contains Proprietary information of LEDTRONICS,™ INC. It may not be copied, used or disclosed for any purpose without the prior express written consent of LEDTRONICS,™ INC.

.XXX ± .010 TOLERANCE PER ANSI-Y14.5
.XX ± .025 (UNLESS OTHERWISE STATED)
ANGLES ± 0°,30'
FRACT. ± 1/32

TITLE CSF370-0XX-005V					
DWG NO	SCALE	SHEET	DATE		
CSF370-5V-DC	1:1	1 OF 1	06-06-11		
CODE IDENT NO.	DWG BY	CHK BY	QA	MFG	R&D
8Z410	GP 06-06-11	PL 06-07-11			