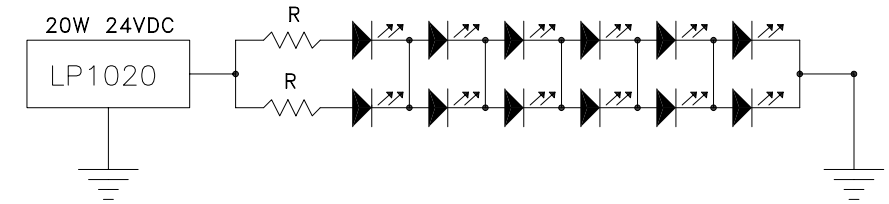
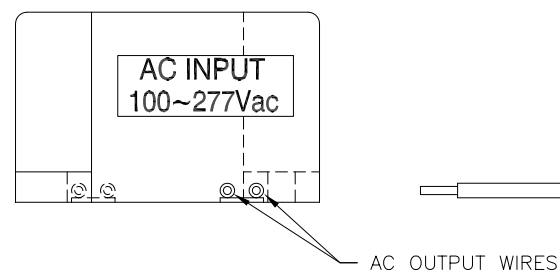


TOP VIEW

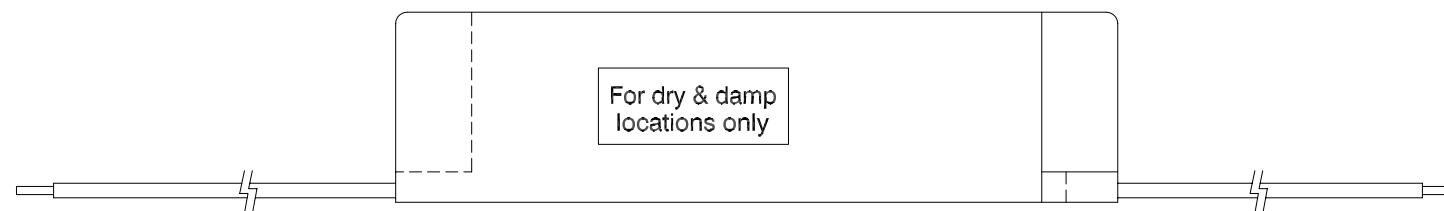
RECOMMENDED APPLICATION SCHEMATIC



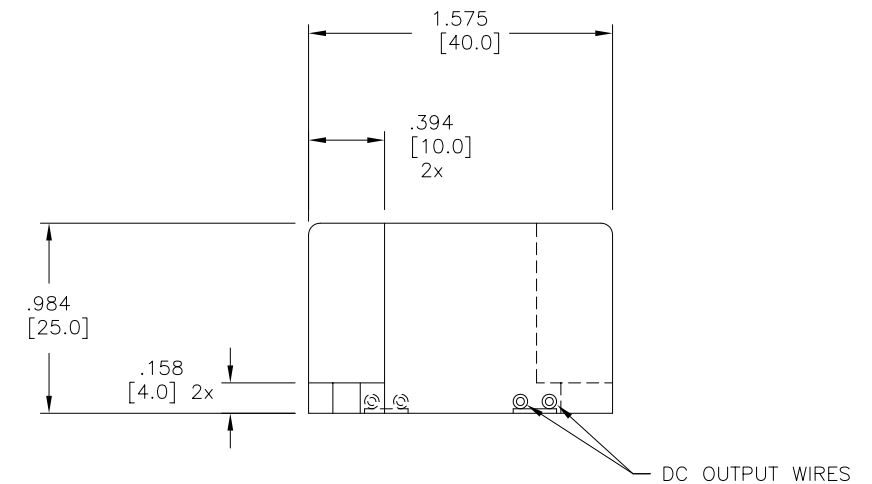
This configuration is based on LED with the following parameters:  
 Vf: 3.0V ~ 3.5V If: 300mA ~ 350mA A. If: 300mA ~ 350mA  
 Recommended value for R is 20 Ohm, 3W.



LEFT VIEW



FRONT VIEW



RIGHT VIEW

ELECTRICAL SPECIFICATIONS

- Input range: 100 to 277 VAC
- Frequency: 47 to 63 Hz
- Power Factor: >0.92 at full load, 115VAC
- Crest Factor: 1.5 max.
- Inrush current: 10.0 Amps maximum at 230VAC, cold start, 25°C
- Input current: 0.3 Amps maximum at 115VAC
- Efficiency: 85% typical at maximum load
- EMI filtering: 47CFR, Part 2, Part 15 and Cispr PUB, 22 Class B
- Maximum power: 20W
- Current Accuracy: ±1% (when applicable)
- Load regulation: ±3%
- Leakage Current: 300uA typ.
- Hold up time: Half cycle minimum at 120 VAC and 80% of rated load
- Protection: Over-voltage, Over-current, Over-power and Short circuit protection: Auto-recovery
- AC input cable: AWG #20, two conductors UL PLTC type or equiv.
- DC input cable: AWG #20, two conductors UL PLTC type or equiv.

CONSTANT VOLTAGE MODE		
OUTPUT		
ADJUST RANGE (Vdc)	CURRENT RANGE (mA)	WATTS
12, ±5%	1660	20



REVISION NOTIFICATION	
<input type="checkbox"/>	PMA
<input type="checkbox"/>	UL
<input type="checkbox"/>	MADE IN USA
<input type="checkbox"/>	CUSTOMER _____
<input type="checkbox"/>	OTHER

 23105 KASHIWA COURT TORRANCE, CA 90505	-PROPRIETARY- This document contains Proprietary information of LEDTRONICS, INC. It may not be copied, used or disclosed for any purpose without the prior express written consent of LEDTRONICS, INC. .XXX ± .010 TOLERANCE PER ANSI-Y14.5 .XX ± .025 (UNLESS OTHERWISE STATED) ANGLES ± 0°.30' FRACT. ± 1/32	TITLE <b>PWR-LP1020-12</b>			
		DWG NO	SCALE	SHEET	DATE
CMMS0380		1:1	1 OF 1	07-27-07	
CODE IDENT NO.	DWG BY	CHK BY	QA	MFG	
8Z410	VT 07-27-07		RD 07-19-12	LD 07-18-12	
				R&D BJ 07-18-12	