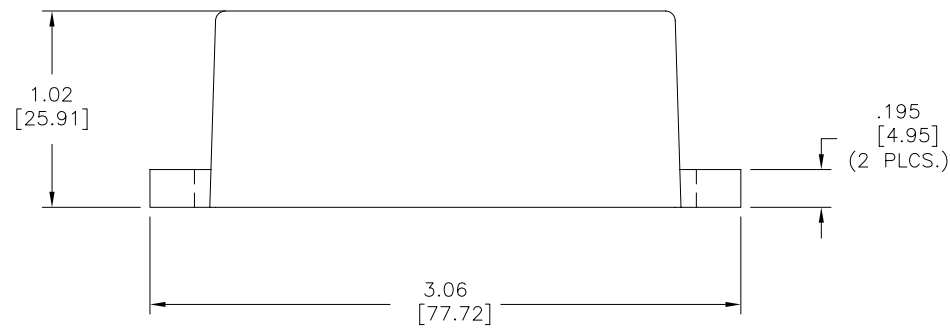
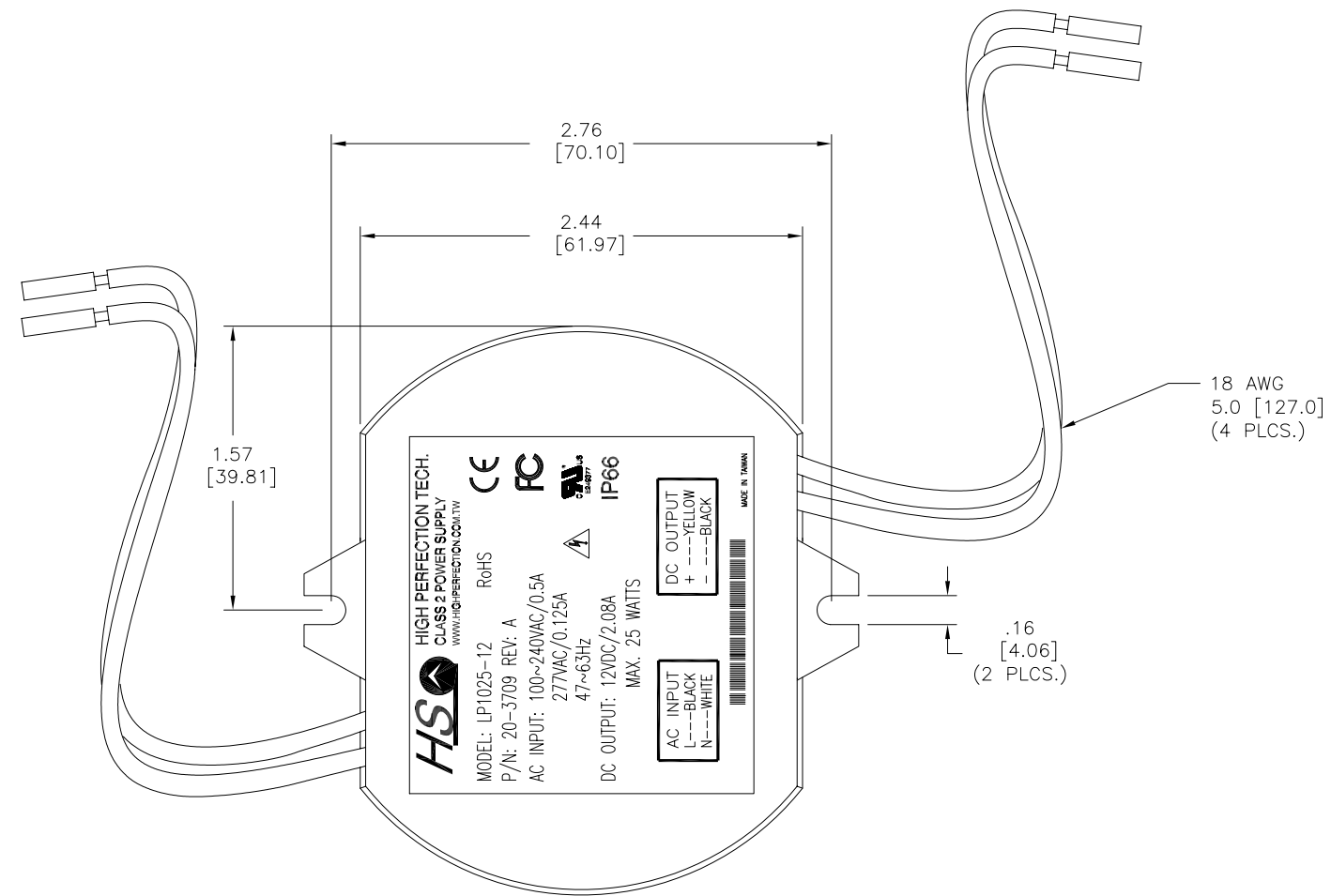


ISOMETRIC VIEW



ELECTRICAL SPECIFICATIONS

DC Output: 12VDC/2.08A, 25W Max.
AC Input: 100~240/100~277VAC/0.5/47~63Hz
Power Factor: >0.92 at full load, 115VAC
Input Inrush current: <10A/115VAC, <20A/230VAC
Efficiency: 85% Typical
Protection: OCP, SCP, OVP-Auto Recovery
Current Crest Facto(lp): 1.5 Max.
Total Harmonic Distortion: 20% Max.
Operation Temp.: -30°C~+60°C, Tc: 90°C
Storage Temp.: -40°C~+85°C
Weight: 210 Grams Typical



REVISION NOTIFICATION	
<input type="checkbox"/>	PMA
<input type="checkbox"/>	UL
<input type="checkbox"/>	CUSTOMER _____
<input type="checkbox"/>	OTHER

 LED[®] LEDTRONICS,™ INC. 23105 KASHIWA COURT TORRANCE, CA 90505	<p align="center">-PROPRIETARY-</p> This document contains Proprietary information of LEDTRONICS,™ INC. It may not be copied, used or disclosed for any purpose without the prior express written consent of LEDTRONICS,™ INC.	TITLE PWR-LP1025-12			
		DWG NO	SCALE	SHEET	DATE
		CMMS0410	1:1	1 OF 1	11-05-07
CODE IDENT NO.	DWG BY	CHK BY	QA	MFG	CUSTOMER
8Z410	MM	PL	JCH	11-06-07	11-06-07

.XXX ± .010 TOLERANCE PER ANSI-Y14.5
.XX ± .025 (UNLESS OTHERWISE STATED)
ANGLES ± 0°.30'
FRACT. ± 1/32