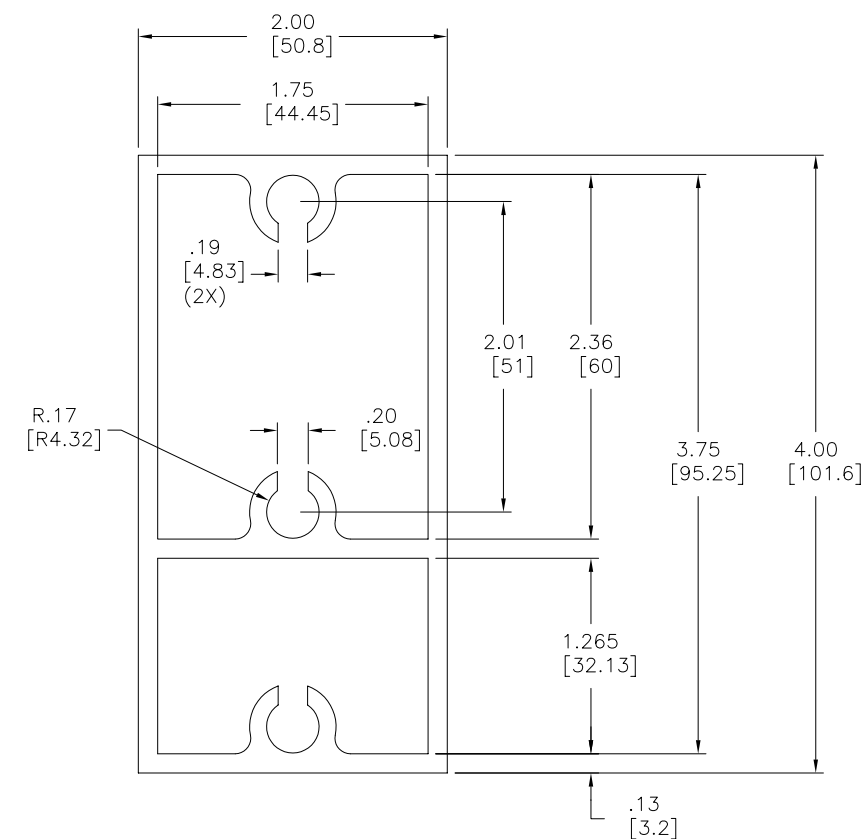
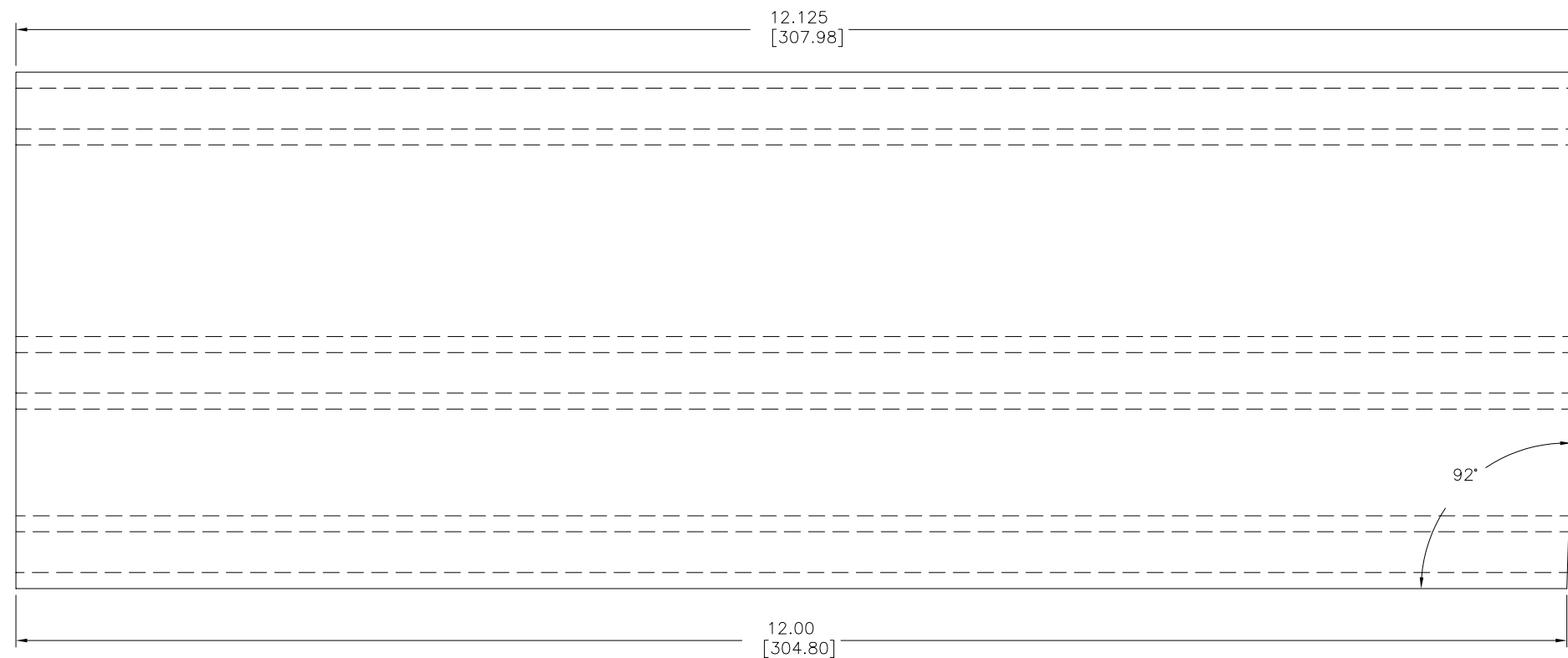
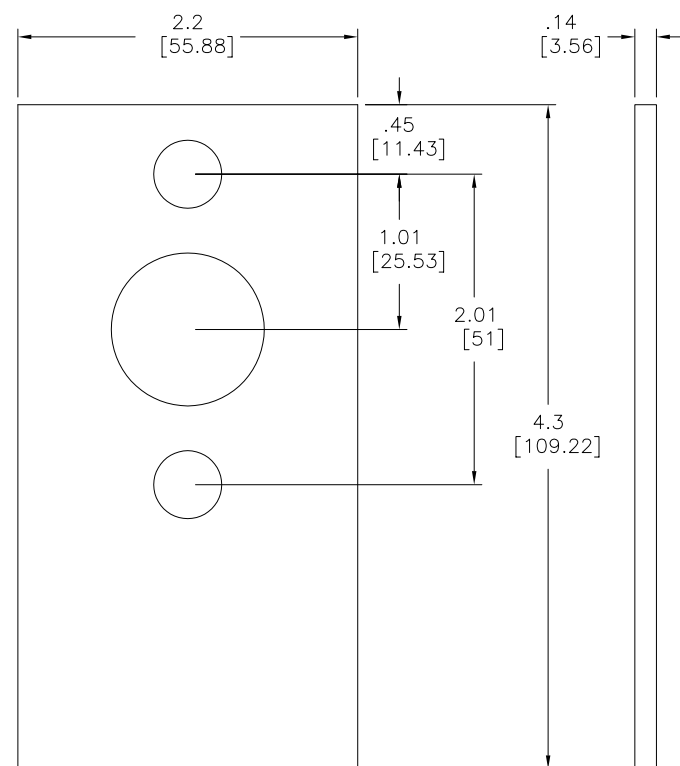


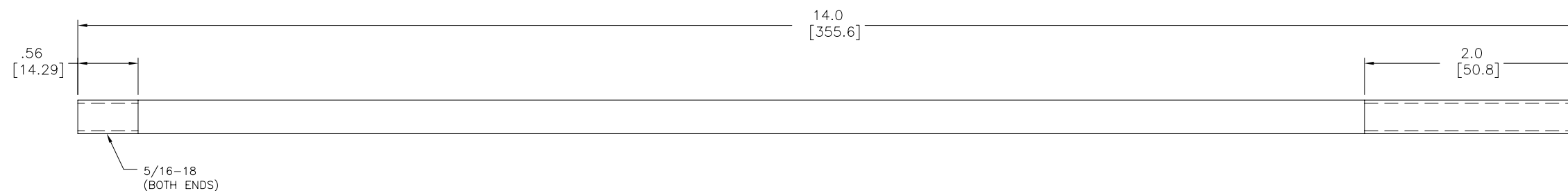
MOUNTING ARM  
QTY: 1  
MATERIAL: ALUMINUM



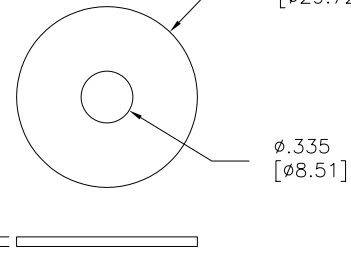
RUBBER GASKET  
QTY: 2



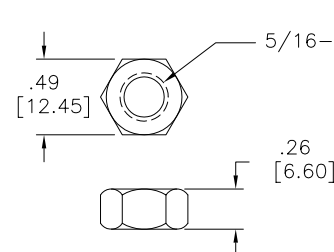
THREADED ROD  
QTY: 2



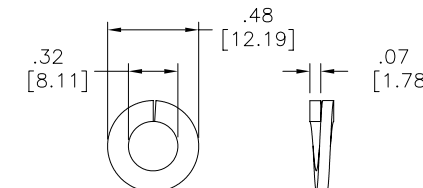
WASHER  
QTY: 4  
Ø1.17 [Ø29.72]



NUT  
QTY: 4  
5/16-18



SPLIT LOCK WASHER  
QTY: 4



REVISION NOTIFICATION

- PMA
- UL
- CUSTOMER \_\_\_\_\_
- OTHER

 LEDTRONICS,™ INC. 23105 KASHIWA COURT TORRANCE, CA 90505		-PROPRIETARY- This document contains Proprietary information of LEDTRONICS,™ INC. It may not be copied, used or disclosed for any purpose without the prior express written consent of LEDTRONICS,™ INC.		TITLE <b>SLB003-FLEM12S-001</b>			
				DWG NO CMHD0406-CUST	SCALE NTS	SHEET 1 OF 1	DATE 03-18-10
CODE IDENT NO. 8Z410	DWG BY GP 03-18-10	CHK BY PL 03-19-10	QA RTD 03-18-10	MFG LD 03-18-10	R&D BJ 03-18-10		
.XXX ± .010 TOLERANCE PER ANSI-Y14.5 .XX ± .025 (UNLESS OTHERWISE STATED) ANGLES ± 0°.30' FRACT. ± 1/32							