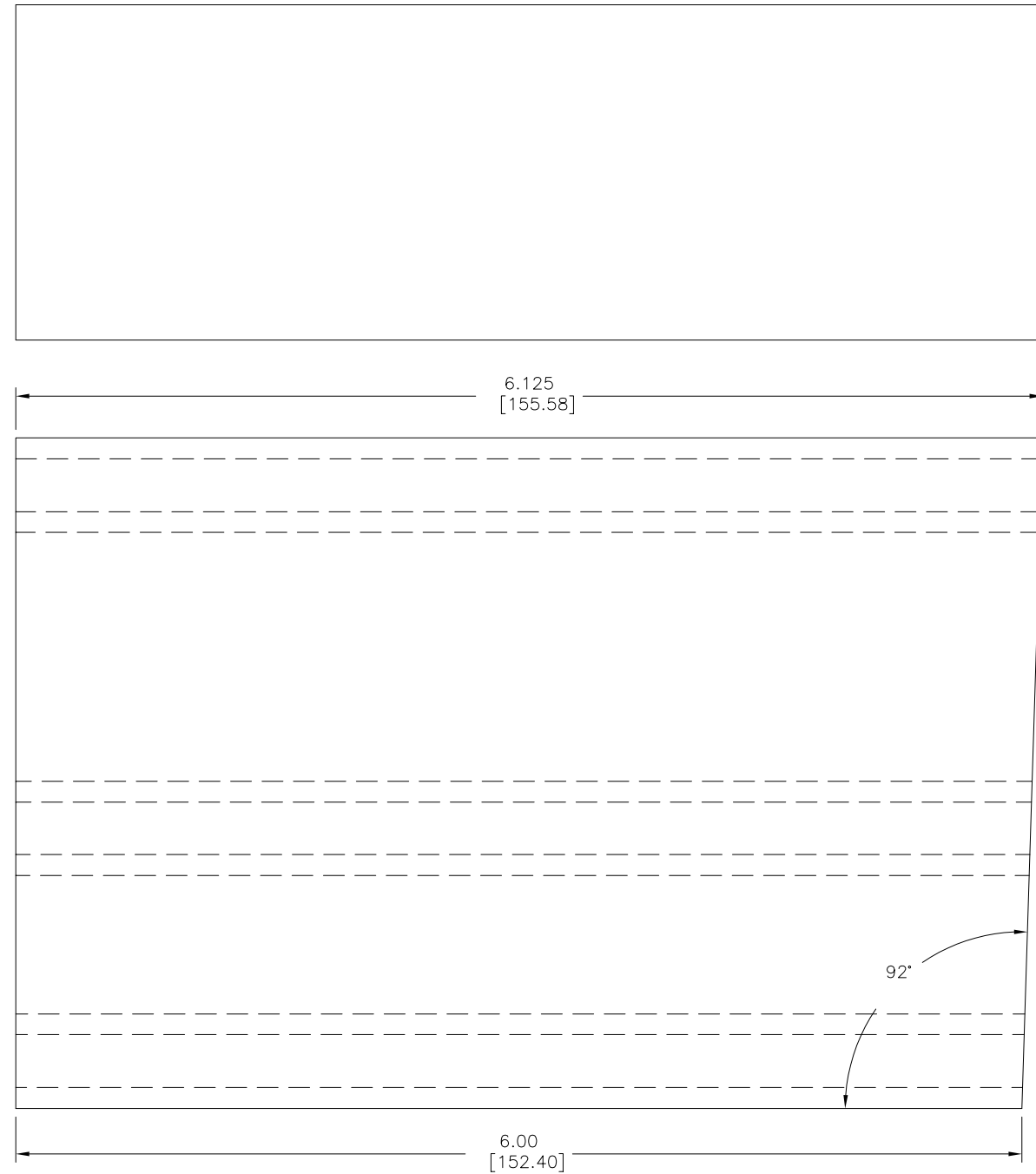
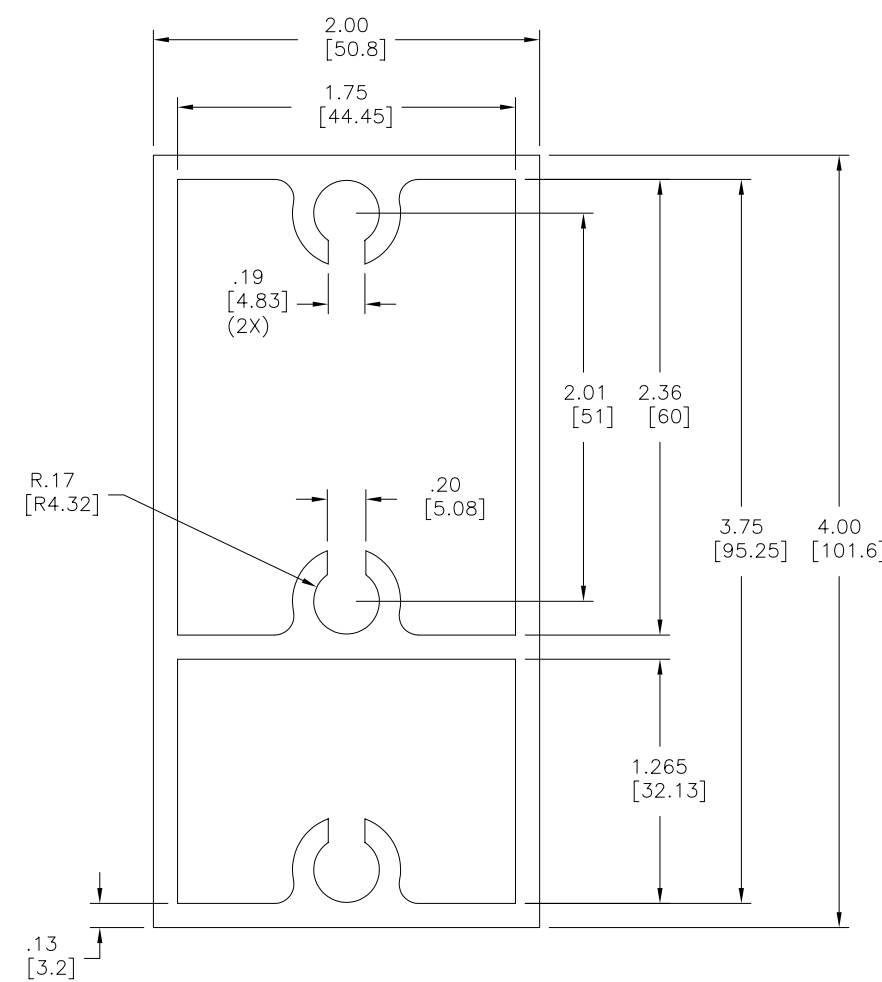


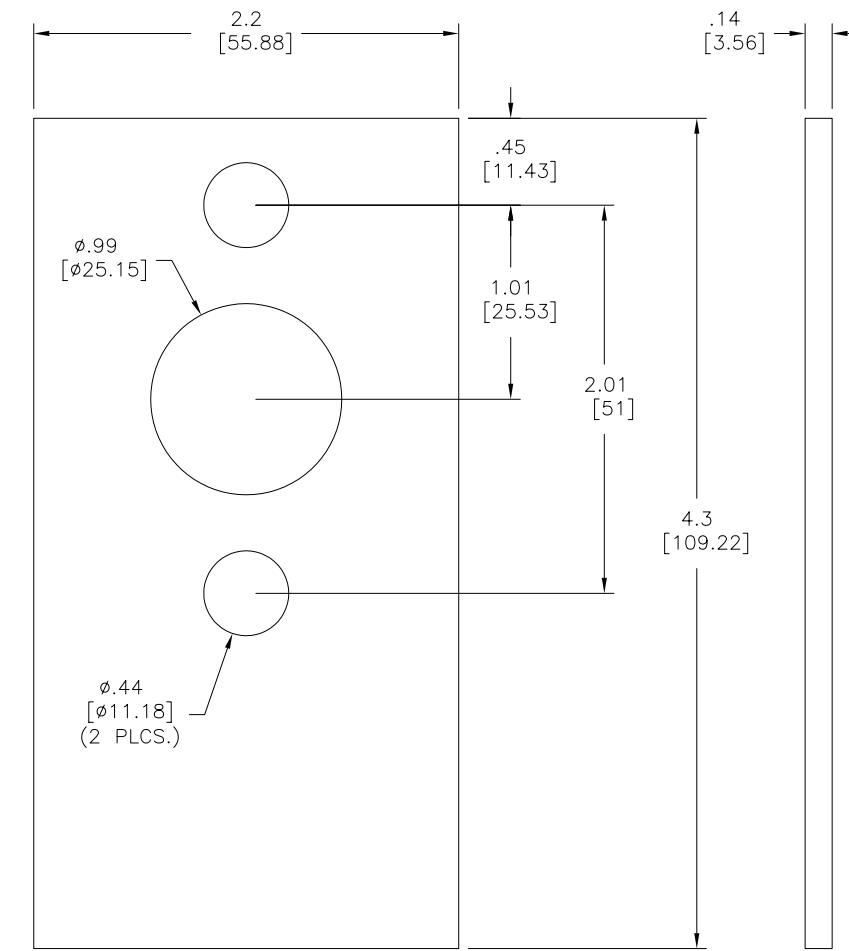
LTR	REVISION	DATE	APPD
-	RELEASED	03-18-10	



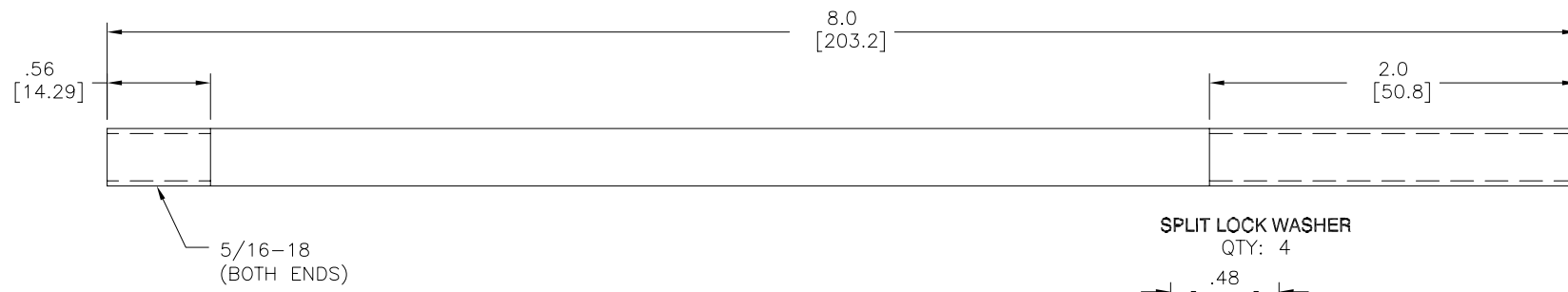
**MOUNTING ARM**  
QTY: 1  
MATERIAL: ALUMINUM



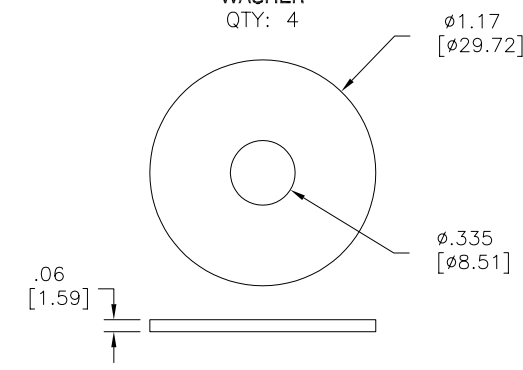
**RUBBER GASKET**  
QTY: 2



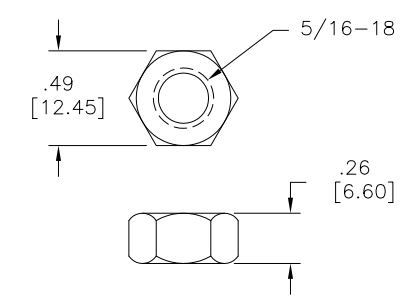
**THREADED ROD**  
QTY: 2



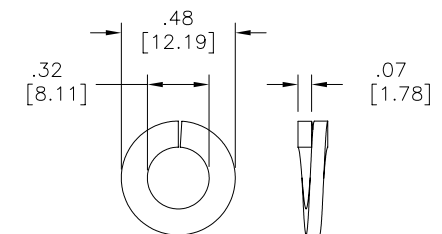
**WASHER**  
QTY: 4



**NUT**  
QTY: 4



**SPLIT LOCK WASHER**  
QTY: 4



REVISION NOTIFICATION	
<input type="checkbox"/>	PMA
<input type="checkbox"/>	UL
<input type="checkbox"/>	CUSTOMER _____
<input type="checkbox"/>	OTHER _____

**LED**<sup>®</sup>  
**LEDTRONICS,™ INC.**  
23105 KASHIWA COURT  
TORRANCE, CA 90505

**-PROPRIETARY-**  
This document contains Proprietary Information of LEDTRONICS, INC. It may not be copied, used or disclosed for any purpose without the prior express written consent of LEDTRONICS, INC.

.XXX ± .010 TOLERANCE PER ANSI-Y14.5  
.XX ± .025 (UNLESS OTHERWISE STATED)  
ANGLES ± 0°,30'  
FRACT. ± 1/32

TITLE					
<b>SLB003-FLEM6S-001</b>					
DWG NO	SCALE	SHEET	DATE		
CMHD0404-CUST	1:1	1 OF 1	03-18-10		
CODE IDENT NO.	DWG BY	CHK BY	QA	MFG	R&D
8Z410	GP	PL	RTD	LD	BJ
	03-18-10	03-19-10	03-18-10	03-18-10	03-18-10