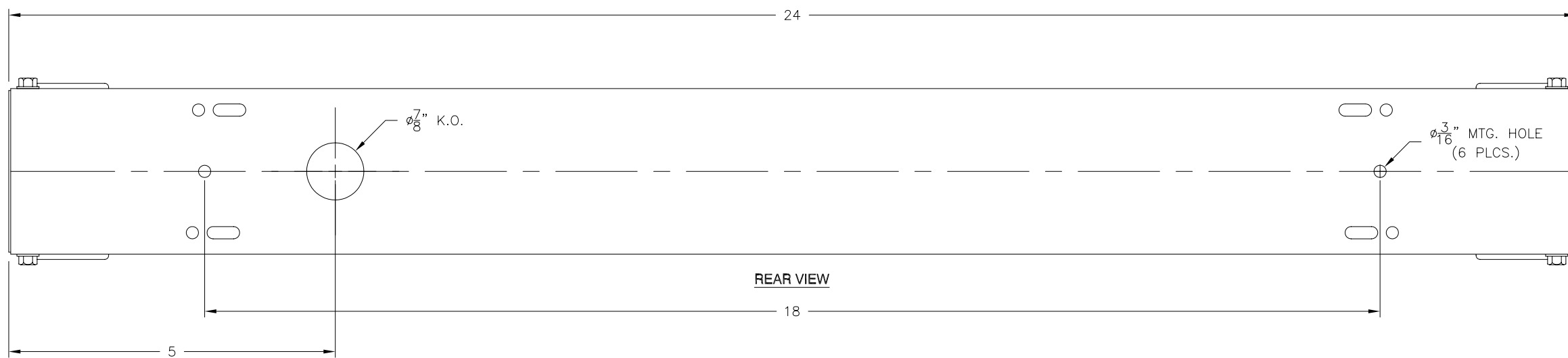
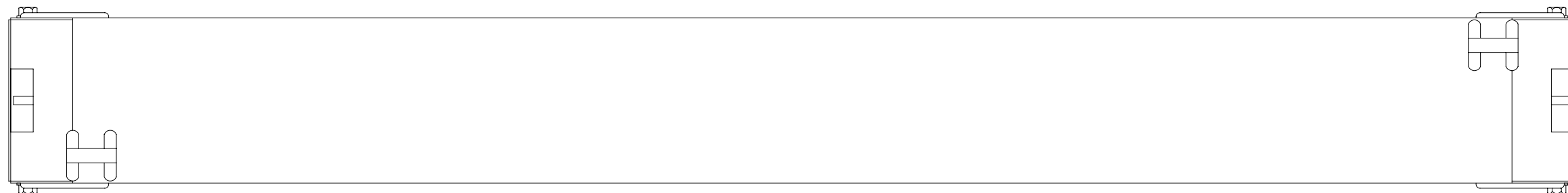


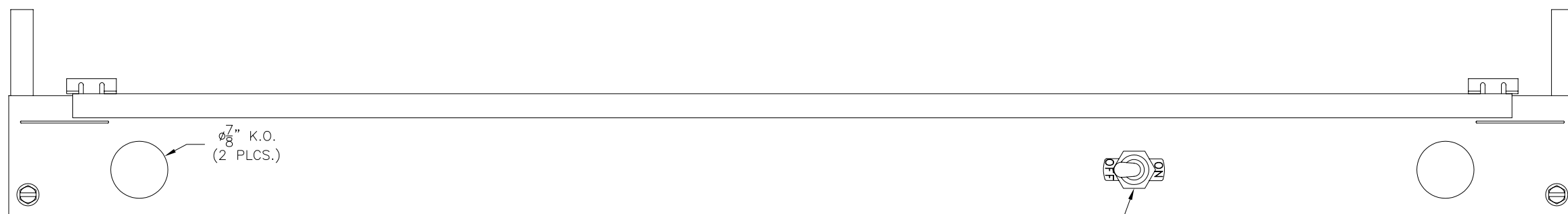
LTR	REVISION	DATE	APPD
-	RELEASED	04-13-12	



REAR VIEW

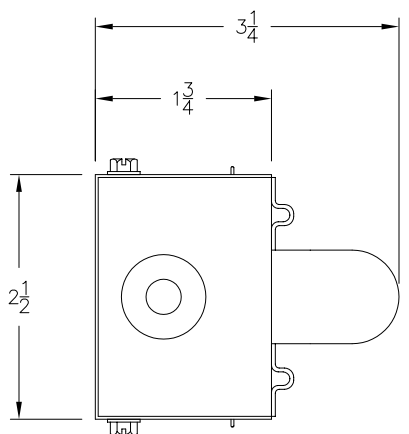


TOP VIEW



FRONT VIEW

ON/OFF SAFETY SWITCH



SIDE VIEW

- NOTES:
1. ETL FILE #3195306
 2. ALL DIMENSIONS ARE IN INCHES.

- HOUSING SPECIFICATIONS:
1. MATERIAL: 22 GA. COLD ROLLED STEEL HOUSING. END PLATES ARE FASTENED TO HOUSING BY SHEET METAL SCREWS TO ASSURE RIGIDITY.
 2. FINISH: BAKED WHITE POLYESTER FINISH STANDARD, MINIMUM REFLECTANCE 86%



REVISION NOTIFICATION	
<input type="checkbox"/>	PMA
<input checked="" type="checkbox"/>	UL
<input type="checkbox"/>	MADE IN USA
<input type="checkbox"/>	CUSTOMER _____
<input type="checkbox"/>	OTHER

 LED TRONICS, INC. 23105 KASHIWA COURT TORRANCE, CA 90505	-PROPRIETARY- This document contains Proprietary information of LEDTRONICS, INC. It may not be copied, used or disclosed for any purpose without the prior express written consent of LEDTRONICS, INC. .XXX ± .010 TOLERANCE PER ANSI-Y14.5 .XX ± .025 (UNLESS OTHERWISE STATED) ANGLES ± 0°.30' FRACT. ± 1/32	TITLE LEDSTR100-1-2LR			
		DWG NO CMHD0496-CUST	SCALE 1:2	SHEET 1 OF 1	DATE 04-13-12
CODE IDENT NO. 8Z410	DWG BY GP/MM 04-13-12	CHK BY QA RD 04-17-12	MFG LD 04-17-12	R&D LUV 04-20-12	