

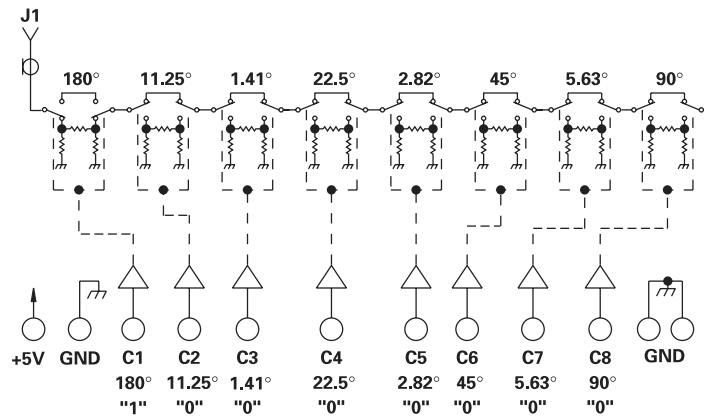
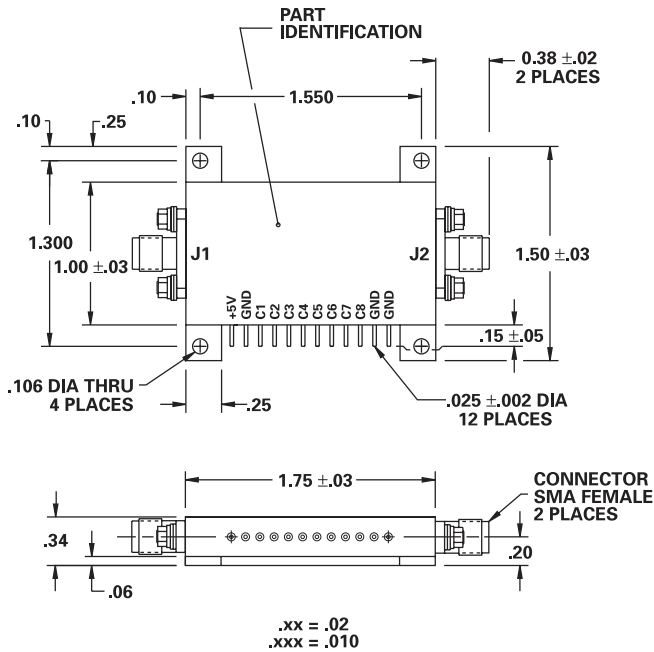
# MODEL NUMBER DPS86315

## Phase Shifter 8 Section

### FEATURES

- 1665-1685 MHz
- SMA Female Connectors
- 1.4 Degrees LSB
- 358.6 Degrees Range
- 180 nSec Switching Speed

### 8 BIT



### GUARANTEED PERFORMANCE

Parameter	Min	Typ	Max	Units	Conditions
Operating Frequency	1665	1675	1685	MHz	
DC Current		8.3	18	mA	At +5 VDC Supply
Control Type		TTL			8 Line Logic "1" = Phase
Control Current	High		±10	µA	VIH = +2.7 V
	Low		±10	µA	VIL = +0.5 V
Insertion Loss		5.9	8	dB	
Phase	LSB	1.4		DEG	1.41, 2.82, 5.63, 11.25
	Range		358.61	DEG	22.5, 45, 90, 180
	Accuracy		±5	DEG	Any One Bit
			±10	DEG	Any Combination of Bits
VSWR		1.2/1	1.6/1		
Impedance		50		OHMS	
Switching Speed		180		nSec	50% TTL to 90% / 10% RF
Transition (Rise/Fall) Time		30		nSec	10% / 90% or 90% / 10% RF
Switching (Video) Transients		300		mV	Peak Value
Intercept Points	2nd	+60	+45	dBm	1700 MHz / 900 MHz
	3rd	+25	+35	dBm	850 MHz / 900 MHz
RF Power	Operate	+15	+10	dBm	0.1 dB Compression
	No Damage		+20	dBm	
Operating Temperature	0	+25	+71	°C	TA

### TYPICAL PERFORMANCE at 25°C

