

FEATURES

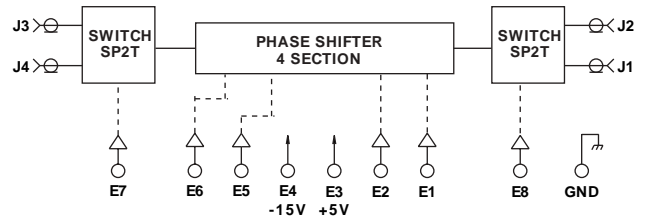
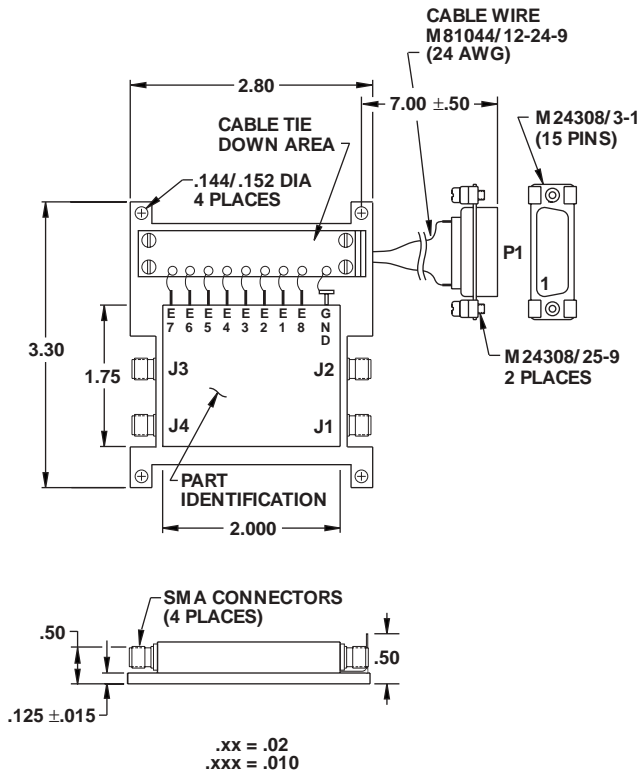
- 1215 - 1400 MHz
- 22.5° LSB, 337.5° Range
- TTL Driver
- Replaceable SMA Connector



**MODEL NO.
CDP0926**

**Phase Shifter,
4 Section Connectorized**

HDI



P1 PIN NO.	UNIT PIN NO.	FUNCTION
1	GND	GROUND
2	E3	+5V
3	E4	-15V
4	E1	180°
5	E6	90°
6	E5	45°
7	E2	22.5°
8	-	N/C
9	-	N/C
10	E8	J1/J2
11	E7	J3/J4
12	-	N/C
13	-	GND
14	-	GND
15	-	N/C

N/C = No Connection

SURFACE "A" CHEM FILM PER MIL-C-5541 CLASS 3, OTHER SURFACES ARE EPOXY PAINT PER MIL-F-14072, COLOR BLACK LUSTERLESS PER MIL-C-22750, COLOR NO. 37038 PER FED-STD-595 OVER PRIMER PER MIL-P-23377 OVER WASHPRIMER PER DOD-P-15328

GUARANTEED PERFORMANCE

Parameter	Min	Typ	Max	Units	Conditions	
Operating Frequency	1215		1400	MHz		
DC Current		93 122	200 200	mA mA	At +5 VDC Supply At -15 VDC Supply	
Control Type		TTL			6 Line Logic "0" = Refer Phase Logic "1" = Phase Shift: E1, E2, E5, E6	
Control Current		High Low	0 0	±20 ±20	µA µA	V _{IH} = +2.7 V V _{IL} = +0.5 V
Insertion Loss	1.5	2.6	3	dB	At Room Temperature	
Phase:	LSB Range Accuracy	0	22.5 337.5 ±6	DEG DEG DEG	22.5, 45, 90, 180 At 1215 MHz	
Isolation	40	52		dB		
VSWR		1.13/1	1.5/1			
Impedance		50		OHMS		
Switching Speed		1.7	3.5	µSec	50% TTL to 90% / 10% RF	
Transition (Rise/Fall) Time		1.5		µSec	90% / 10% or 10% / 90% RF	
Switching (Video) Transients		2		mV	Peak Value	
Intercept Points	2nd 3rd	+68 +44		dBm dBm	2000 / 785 MHz 1000 / 785 MHz	
RF Power	Operate No Damage	+36 +36	+34 +36	dBm dBm	0.2 dB Compression	
Operating Temperature	-54	+25	+80	°C	TA	

