

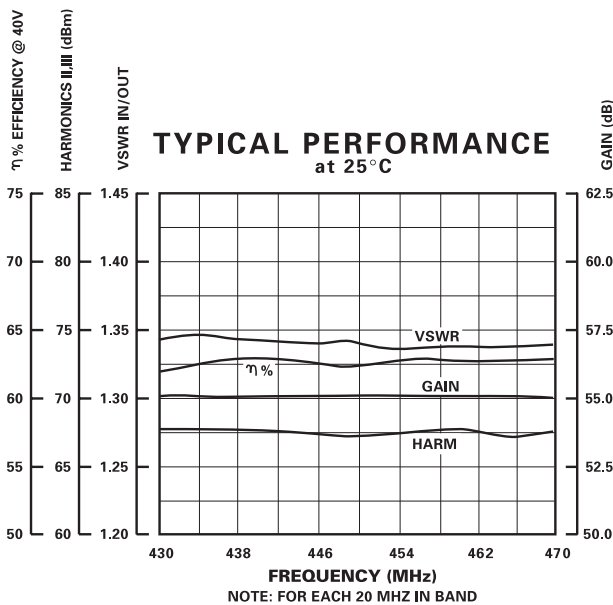
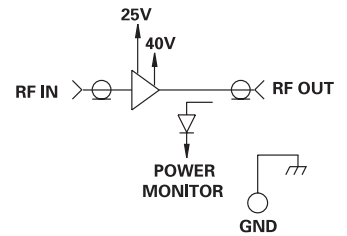
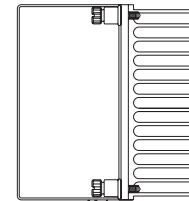
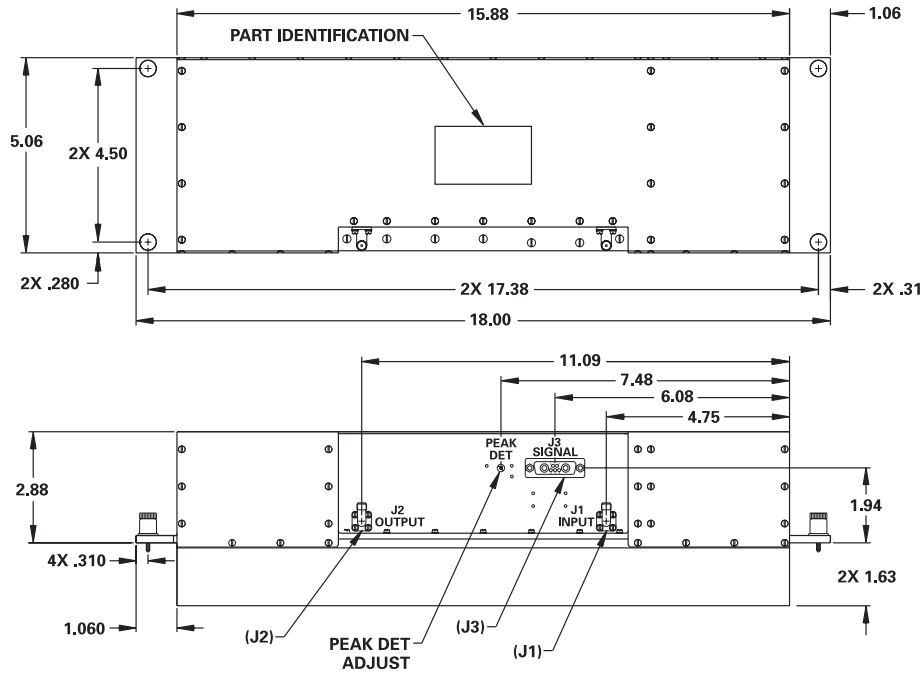
# MODEL NUMBER CAM09121

# UHF High Power Amplifier (Driver)

## FEATURES

- 430-470 MHz
- Power Out +57.8 dBm
- Gain 55 dB
- Efficiently 62% at 40V
- Duty Cycle 15%

## AMP



## GUARANTEED PERFORMANCE

Parameter	Min	Typ	Max	Units	Conditions
Operating Frequency	430		470	MHz	Select 20 MHz in Band
RF Power					
<i>Output</i>	+57.6	+57.8		dBm	
<i>at 1 dB Compression</i>					
Gain	54.5	55		dB	Gain can be Adjusted to 60 dB Min.
VSWR In/Out		1.3	1.4		
Harmonics	II	65		dBc	
	III	65		dBc	
Amplitude Tracking		±0.2	±0.3	dB	Between Units
Phase Tracking		±1.5	±2	DEG	Between Units
Impedance		50		OHMS	
Duty Cycle			15	%	
Pulse Droop			0.05	dB	
Transition (Rise/Fall) Time		80		nSec	
DC Current			4	Amp	At +40 VDC Supply
			2.7	Amp	At +25 VDC Supply
Operating Temperature	-20	+25	+65	°C	TA