

## 2 A Non-Isolated Step-Down DC/DC Converter Modules

### Features and Benefits

- Wide input voltage range:  $V_{IN} = 8$  to 30 V
- High efficiency: 95% (max) for MPM80, 88% (max) for MPM81, and 93% (max) for MPM82
- Output voltage: 3.0 to 16 V for MPM80, 3.3 V for MPM81, and 5.0 V for MPM82
- Maximum output current:  $I_O = 2$  A
- Operating frequency: 630 kHz
- Few external components required:
  - Built-in inductor
  - Built-in phase compensation circuit
- A variety of protection features include:
  - Overcurrent (OCP) with auto restart
  - Overvoltage (OVP)
  - Undervoltage lockout (UVLO)
  - Overtemperature (OTP) with auto restart

**Package: TO-220-8L**



*Not to scale*

### Description

The MPM80, MPM81, and MPM82 are hybrid module ICs that include a non-isolated step-down DC/DC converter circuit with an inductor in a full-mold package. These features allow simple circuit configurations using few components, contributing to a reduction in design time and PCB space.

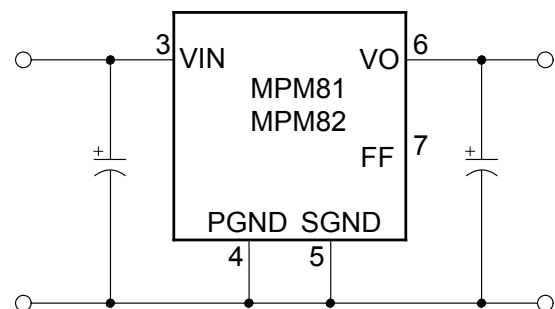
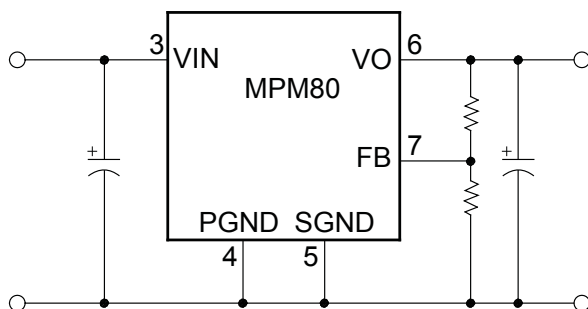
This product can operate by simply connecting an input smoothing capacitor, an output smoothing capacitor, and output voltage setting resistors. This contributes to a reduction in man-hours for design and evaluation. Because this product contains a power inductor, the burdensome work of selecting and evaluating an inductor is unnecessary.

Adoption of the free-standing full-mold package provides the design flexibility of either screwing the package to a heatsink or mounting the package directly on a PCB substrate without installing a heatsink, depending on the output voltage setting and load conditions.

### Applications:

- FA devices
- Communication devices
- Consumer devices
- Others

### Typical Application Circuits



# MPM8x Series *2 A Non-Isolated Step-Down DC/DC Converter Modules*

## Selection Guide

Part Number	Package Leadform	Input Voltage (VDC)	Output Voltage (VDC)	Output Current (A)	Drive Frequency (kHz)	Efficiency (% Max)
MPM80	Straight Staggered	8 to 30	3 to 16	2	630	95
MPM80-R	Right Angle Staggered					
MPM81	Straight Staggered	8 to 30	3.3	2	630	88
MPM81-R	Right Angle Staggered					
MPM82	Straight Staggered	8 to 30	5	2	630	93
MPM82-R	Right Angle Staggered					

The polarity value for current specifies a sink as "+," and a source as "-", referencing the device.

## Absolute Maximum Ratings, valid at $T_A = 25^\circ\text{C}$ if not otherwise specified

Characteristic	Symbol	Conditions	Rating	Unit
Voltage Between VIN and GND Pins	$V_{IN}$	PGND and SGND tied together externally	35	V
Voltage Between FB and GND Pins	$V_{FB}$	PGND and SGND tied together externally	5	V
Voltage Setting Between VO and GND Pins	$V_O$	MPM80 only; PGND and SGND tied together externally	20	V
MIC Capacity Loss	$P_{LOSS}$	No radiator added	2	W
Junction Temperature	$T_J$		-40 to 125	$^\circ\text{C}$
Storage Temperature	$T_{stg}$		-40 to 125	$^\circ\text{C}$
Thermal Resistance	$R_{\theta JA}$	Between MIC junction and air; no heatsink	50	$^\circ\text{C/W}$

## Recommended Operating Conditions<sup>1,2</sup>

Characteristic	Symbol	Conditions	Min.	Max.	Unit	
Input Voltage Range <sup>3</sup>	$V_{IN}$		8	30	V	
Output Voltage Range	$V_O$	MPM80	Variable with external resistors	3.0	16.0	V
		MPM81	Fixed voltage	3.23	3.37	V
		MPM82	Fixed voltage	4.9	5.1	V
Output Current Range <sup>4</sup>	$I_O$		0	2.0	A	
Operating Junction Temperature	$T_{JOP}$		-20	125	$^\circ\text{C}$	
Operating Temperature Range <sup>4</sup>	$T_A$	With derating	-20	85	$^\circ\text{C}$	

<sup>1</sup>Recommended operating conditions refer to operating conditions to maintain normal circuit functions specified in the Electrical Characteristics table in this document and they must be followed in actual use.

<sup>2</sup>When connected as shown in figure 1.

<sup>3</sup>Derating is required; refer to the Thermal Characteristics section.

<sup>4</sup>Minimum value must be either 8 V or  $V_O + 3$  V, whichever is greater.

**MPM80 Electrical Characteristics**<sup>1</sup>  $T_A = 25^\circ\text{C}$ ,  $V_{IN} = 12\text{ V}$ , if not otherwise specified

Characteristic	Symbol	Test Conditions	Min.	Typ.	Max.	Unit
Output Voltage Setting Reference Voltage	$V_{FBREF}$	$I_O = 1\text{ A}$	0.784	0.800	0.816	V
Output Voltage Setting Reference Voltage Temperature Coefficient	$\Delta V_{FBREF}/\Delta T$	$T_A = -20\text{ to }85^\circ\text{C}$	–	$\pm 0.05$	–	mV/ $^\circ\text{C}$
Line Regulation <sup>2</sup>	$V_{LINE}$	$V_{IN} = 8\text{ to }30\text{ V}$ , $V_O = 5\text{ V}$ , $I_O = 1\text{ A}$	–2	–	2	%
Oscillation Frequency	f		567	630	693	kHz
Load Regulation <sup>2</sup>	$V_{LOAD}$	$V_O = 5\text{ V}$ , $I_O = 0\text{ to }2\text{ A}$	–3	–	3	%
Overcurrent Protection (OCP) Starting Current <sup>3</sup>	$I_S$	$V_O = 5\text{ V}$ , drooping/automatic restoration of operation when fault removed	2.4	–	4.0	A
Circuit Current	$I_{IN}$	$I_O = 0\text{ A}$ , $V_{FB} = 1\text{ V}$	–	2.5	–	mA
Overvoltage Protection (OVP) Starting Voltage <sup>4</sup>	$V_{OVP}$	$V_{IN} = 8\text{ to }35\text{ V}$	–	$1.1 \times V_{FBREF}$	–	V
MIC Overtemperature Protection (OTP) Starting Temperature	$T_{JOTP}$	$V_{IN} = 8\text{ to }35\text{ V}$ , automatic restoration of operation when fault removed	135	150	–	$^\circ\text{C}$
Undervoltage Lockout (UVLO) Voltage	$V_{UVLO}$		6.0	7.0	7.5	V
UVLO Release Voltage	$V_{UVLO(OFF)}$		5.5	6.5	7.0	V
UVLO Hysteresis Voltage <sup>4</sup>	$V_{UVLOHYS}$		–	0.5	–	V
Minimum Input-Output Difference	$V_{INVO(MIN)}$	When $V_O$ is set to 12 V	3	–	–	V
Built-In Software Start Time <sup>4</sup>	$t_{SS}$	$V_{IN} = 12\text{ V}$ , $I_O = 1.0\text{ A}$	–	6.4	–	ms
Maximum On Duty Cycle <sup>4</sup>	$D_{MAX}$		–	90	–	%
Minimum On-Time <sup>4</sup>	$t_{MIN}$		–	160	–	ns
Inductance Value	L		4.48	5.60	6.72	$\mu\text{H}$

<sup>1</sup>The Electrical Characteristics value specifications apply when the MPM80 is connected as shown in figure 1.

<sup>2</sup> $V_{LINE}$  and  $V_{LOAD}$  do not include output voltage setting deviation. Note that output voltage setting deviation is affected by precision of the external resistors R1 and R2. For details, refer to the Application Information section.

<sup>3</sup>When the output voltage,  $V_O$ , is set to any value other than 5.0 V, the inductance value and operating frequency of the built-in inductor change in direct proportion with to the setting output voltage. Therefore, the OCP operating point may vary significantly from the value when  $V_O = 5.0\text{ V}$ .

<sup>4</sup>Determined by design, not tested in production.

# MPM8x Series *2 A Non-Isolated Step-Down DC/DC Converter Modules*

## MPM81 Electrical Characteristics<sup>1</sup> $T_A = 25^\circ\text{C}$ , $V_{IN} = 12\text{ V}$ , if not otherwise specified

Characteristic	Symbol	Test Conditions	Min.	Typ.	Max.	Unit
Output Voltage Setting Reference Voltage	$V_{FBREF}$	$V_{IN} = 8\text{ to }30\text{ V}$ , $I_O = 1\text{ A}$	3.23	3.30	3.37	V
Line Regulation	$V_{LINE}$	$V_{IN} = 8\text{ to }30\text{ V}$ , $I_O = 1\text{ A}$	-2	-	2	%
Oscillation Frequency	f		567	630	693	kHz
Load Regulation	$V_{LOAD}$	$I_O = 0\text{ to }2\text{ A}$	-3	-	3	%
Overcurrent Protection (OCP) Starting Current	$I_S$	$V_O = 5\text{ V}$ , drooping/automatic restoration of operation when fault removed	2.7	-	4.4	A
Circuit Current	$I_{IN}$	$I_O = 0\text{ A}$ , $V_{FB} = 1\text{ V}$	-	2.5	-	mA
Overvoltage Protection (OVP) Starting Voltage <sup>2</sup>	$V_{OVP}$	$V_{IN} = 8\text{ to }35\text{ V}$	-	$1.1 \times V_{FBREF}$	-	V
MIC Overtemperature Protection (OTP) Starting Temperature	$T_{JOTP}$	$V_{IN} = 8\text{ to }35\text{ V}$ , automatic restoration of operation when fault removed	135	150	-	$^\circ\text{C}$
Undervoltage Lockout (UVLO) Voltage	$V_{UVLO}$		6.0	7.0	7.5	V
UVLO Release Voltage	$V_{UVLO(OFF)}$		5.5	6.5	7.0	V
UVLO Hysteresis Voltage <sup>2</sup>	$V_{UVLOHYS}$		-	0.5	-	V
Built-In Software Start Time <sup>2</sup>	$t_{SS}$	$V_{IN} = 12\text{ V}$ , $I_O = 1.0\text{ A}$	-	6.4	-	ms
Maximum On Duty Cycle <sup>2</sup>	$D_{MAX}$		-	90	-	%
Minimum On-Time <sup>2</sup>	$t_{MIN}$		-	160	-	ns
Inductance Value	L		4.48	5.60	6.72	$\mu\text{H}$

<sup>1</sup>The Electrical Characteristics value specifications apply when the MPM80 is connected as shown in figure 1.

<sup>2</sup>Determined by design, not tested in production.

# MPM8x Series *2 A Non-Isolated Step-Down DC/DC Converter Modules*

## MPM82 Electrical Characteristics<sup>1</sup> $T_A = 25^\circ\text{C}$ , $V_{IN} = 12\text{ V}$ , if not otherwise specified

Characteristic	Symbol	Test Conditions	Min.	Typ.	Max.	Unit
Output Voltage Setting Reference Voltage	$V_{FBREF}$	$V_{IN} = 8\text{ to }30\text{ V}$ , $I_O = 1\text{ A}$	4.90	5.00	5.10	V
Line Regulation	$V_{LINE}$	$V_{IN} = 8\text{ to }30\text{ V}$ , $I_O = 1\text{ A}$	-2	-	2	%
Oscillation Frequency	f		567	630	693	kHz
Load Regulation	$V_{LOAD}$	$I_O = 0\text{ to }2\text{ A}$	-3	-	3	%
Overcurrent Protection (OCP) Starting Current	$I_S$	$V_O = 5\text{ V}$ , drooping/automatic restoration of operation when fault removed	2.4	-	4.0	A
Circuit Current	$I_{IN}$	$I_O = 0\text{ A}$ , $V_{FB} = 1\text{ V}$	-	2.5	-	mA
Overvoltage Protection (OVP) Starting Voltage <sup>2</sup>	$V_{OVP}$	$V_{IN} = 8\text{ to }35\text{ V}$	-	$1.1 \times V_{FBREF}$	-	V
MIC Overtemperature Protection (OTP) Starting Temperature	$T_{JOTP}$	$V_{IN} = 8\text{ to }35\text{ V}$ , automatic restoration of operation when fault removed	135	150	-	$^\circ\text{C}$
Undervoltage Lockout (UVLO) Voltage	$V_{UVLO}$		6.0	7.0	7.5	V
UVLO Release Voltage	$V_{UVLO(OFF)}$		5.5	6.5	7.0	V
UVLO Hysteresis Voltage <sup>2</sup>	$V_{UVLOHYS}$		-	0.5	-	V
Built-In Software Start Time <sup>2</sup>	$t_{SS}$	$V_{IN} = 12\text{ V}$ , $I_O = 1.0\text{ A}$	-	6.4	-	ms
Maximum On Duty Cycle <sup>2</sup>	$D_{MAX}$		-	90	-	%
Minimum On-Time <sup>2</sup>	$t_{MIN}$		-	160	-	ns
Inductance Value	L		4.48	5.60	6.72	$\mu\text{H}$

<sup>1</sup>The Electrical Characteristics value specifications apply when the MPM80 is connected as shown in figure 1.

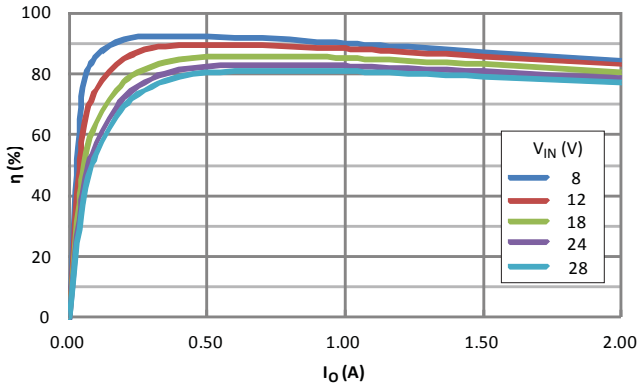
<sup>2</sup>Determined by design, not tested in production.

Characteristic Performance

MPM80 Device

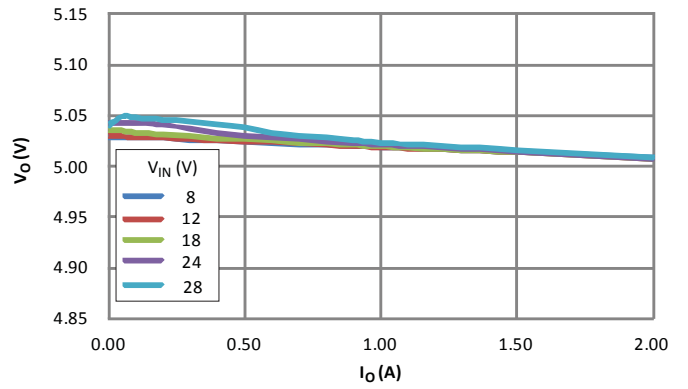
Efficiency versus Output Current

$V_O = 5\text{ V}$ ,  $T_A = 25^\circ\text{C}$



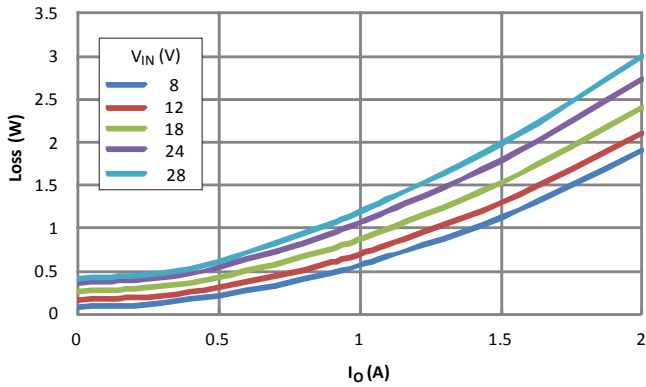
Load Regulation versus Output Current

$V_O = 5\text{ V}$ ,  $T_A = 25^\circ\text{C}$



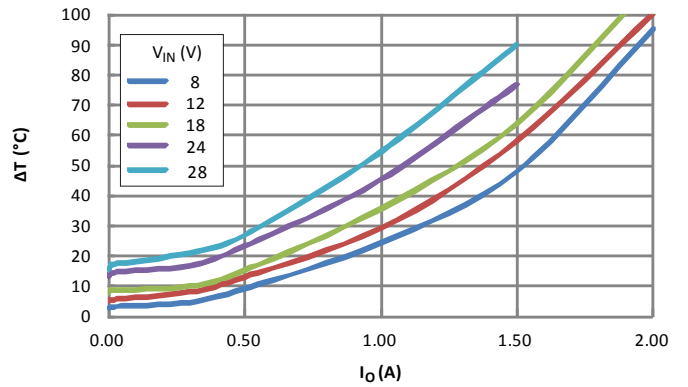
Internal Loss versus Output Current

$V_O = 5\text{ V}$ ,  $T_A = 25^\circ\text{C}$



Temperature Rise versus Output Current

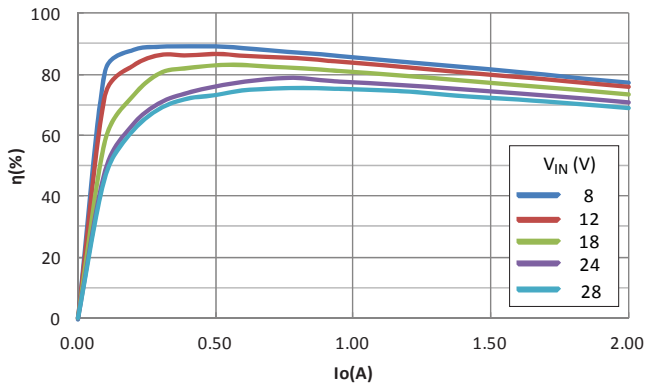
$V_O = 5\text{ V}$ ,  $T_A = 25^\circ\text{C}$



MPM81 Device

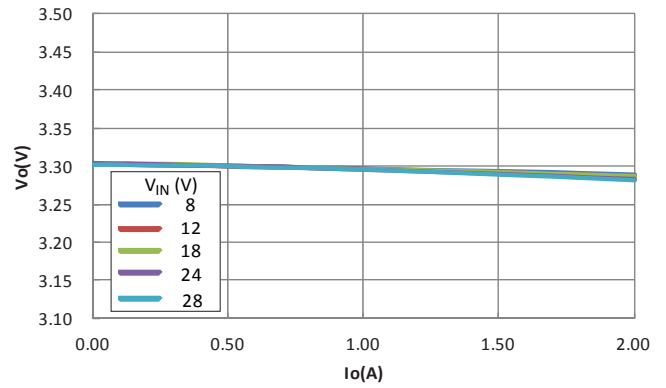
Efficiency versus Output Current

$V_O = 5\text{ V}, T_A = 25^\circ\text{C}$



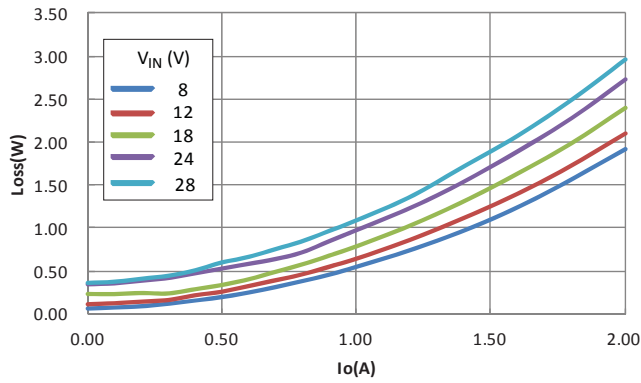
Load Regulation versus Output Current

$V_O = 5\text{ V}, T_A = 25^\circ\text{C}$



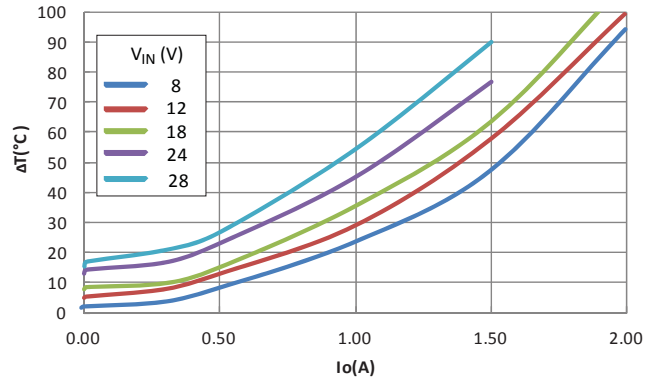
Internal Loss versus Output Current

$V_O = 5\text{ V}, T_A = 25^\circ\text{C}$



Temperature Rise versus Output Current

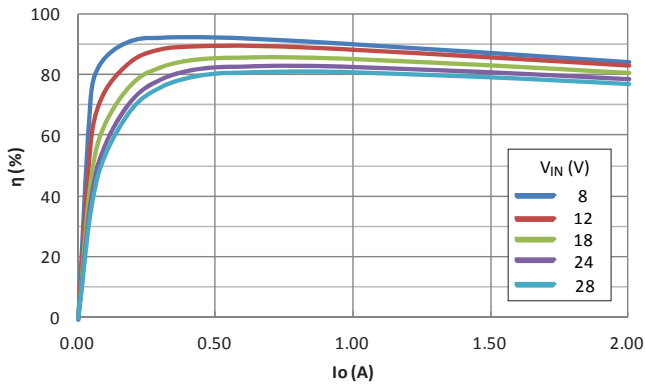
$V_O = 5\text{ V}, T_A = 25^\circ\text{C}$



MPM82 Device

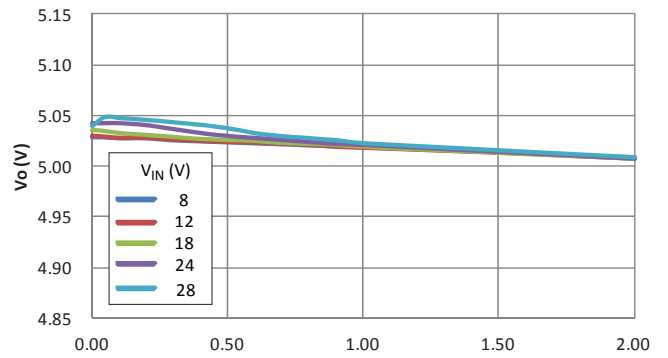
Efficiency versus Output Current

$V_O = 5\text{ V}, T_A = 25^\circ\text{C}$



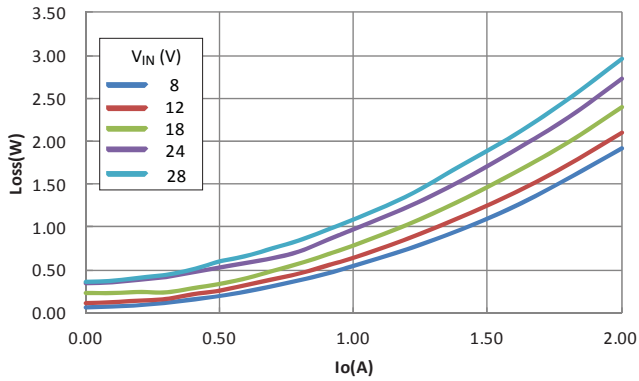
Load Regulation versus Output Current

$V_O = 5\text{ V}, T_A = 25^\circ\text{C}$



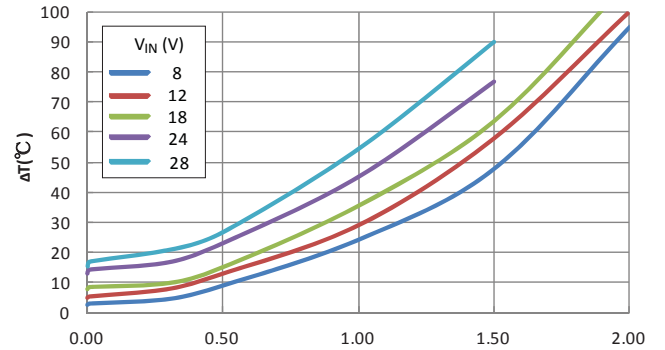
Internal Loss versus Output Current

$V_O = 5\text{ V}, T_A = 25^\circ\text{C}$



Temperature Rise versus Output Current

$V_O = 5\text{ V}, T_A = 25^\circ\text{C}$





## Standard Connection Diagram

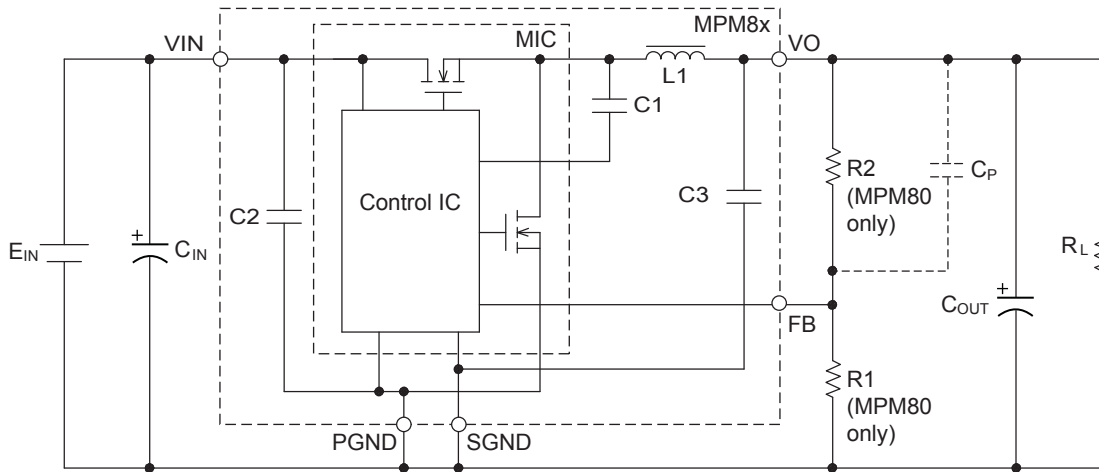


Figure 1. MPM8x standard circuit connection diagram

### Recommended Circuit Constants\*

MPM80, MPM81, and MPM82	
$E_{IN}$	Source of input voltage
$C_{IN}$	100 to 1000 $\mu\text{F}$ ; not required if the input voltage is stable
$C_{OUT}$	220 to 1000 $\mu\text{F}$ (electrolytic capacitor) or 47 to 100 $\mu\text{F}$ (ceramic capacitor); when using an electrolytic capacitor, use a low-impedance capacitor
$C_P$	100 to 470pF (Add $C_P$ when ceramic capacitor is used for $C_{OUT}$ .)
$R_L$	Load
MPM80 Only	
$R_1$	680 $\Omega$ to 1.5 k $\Omega$
$R_2$	With $R_1$ sets the output voltage, according to the following formula: $R_2 = \left( \frac{V_O}{V_{FBREF}} - 1 \right) \times R_1 \quad (1)$ where $V_O$ is the target output voltage, and $V_{FBREF}$ is the FB pin reference voltage, 0.8 V (typ)

\*If operation is unstable, add a bypass capacitor (1  $\mu\text{F}$ , ceramic) as near as possible to the device, between VIN and PGND pins.

**Thermal Derating**

Figure 2 shows thermal derating curves for the MPM80. The MPM80 requires derating based on the ambient temperature,  $T_A$ , in use.

Use the MPM80 within the thermal derating curves shown in figure 2. If using the MPM80 outside the curves, consider using a heatsink. In this case, the thermal resistance,  $R_{\theta J-C}$ , between the MPM80 junction and case is  $8\text{ }^\circ\text{C/W}$ . Therefore, use the MPM80 at a junction temperature,  $T_J$ , of  $125^\circ\text{C}$  or less, with  $T_J$  calculated using the following procedure.

1. The internal loss,  $P_{LOSS}$ , of the MPM80 in use is calculated as follows:

$$P_{LOSS} = (I_{IN} \times V_{IN}) - (I_O \times V_O) \quad (2)$$

where

$P_{LOSS}$  is the internal loss of the MPM80, in watts,

$I_{IN}$  is the input current of the MPM80, in amperes,

$V_{IN}$  is the input voltage of the MPM80, in volts,

$I_O$  is the output current of the MPM80 in amperes, and

$V_O$  is the output voltage of the MPM80, in volts.

Overall thermal resistance,  $R_{\theta J-H}$ , is determined by adding the thermal resistances of the MPM80 and a heatsink, as follows:

$$R_{\theta J-H} = R_{\theta J-C} + R_{\theta H} \quad (3)$$

where

$R_{\theta J-H}$  is the thermal resistance between the MPM80 and heat-sink, in degrees Celsius per watt,

$R_{\theta J-C}$  is the thermal resistance between the MPM80 junction and the MPM80 case, in degrees Celsius per watt, and

$R_{\theta H}$  is the thermal resistance of the heatsink, in degrees Celsius per watt.

Junction temperature,  $T_J$ , is calculated as follows:

$$T_J = P_{LOSS} \times R_{\theta J-H} \quad (4)$$

Because the maximum  $T_J$  rating of the MPM80 is  $125^\circ\text{C}$ , please use the MPM80 at a junction temperature of  $125^\circ\text{C}$  or less.

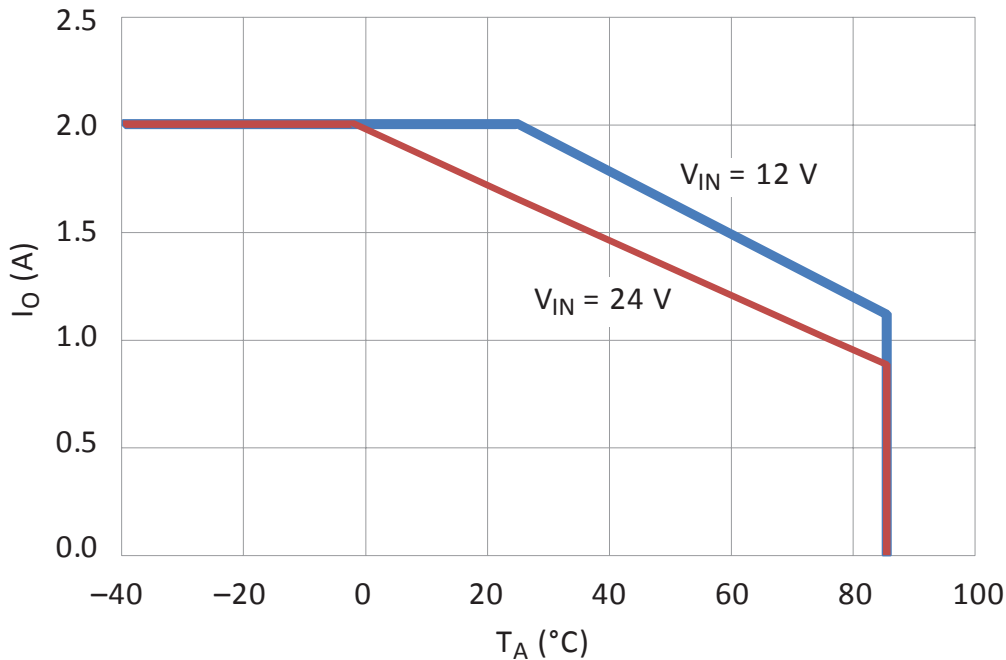
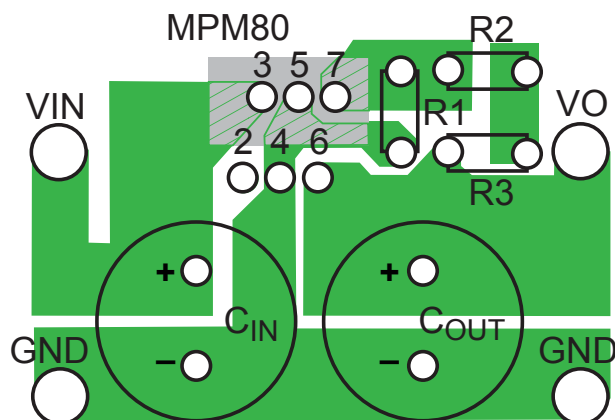


Figure 2. MPM80 thermal derating curve; measurement conditions:  $V_O = 5\text{ V}$ , no heatsink

## Recommended PCB Layout



$C_{IN}$ : Input capacitor

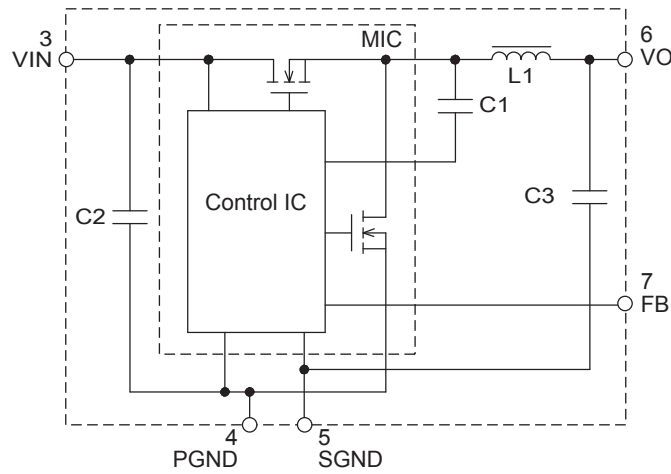
$C_{OUT}$ : Output capacitor

R1: Output voltage setting resistor (FB to GND resistance)

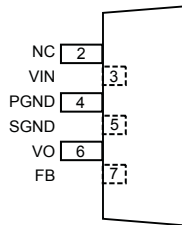
R2 and R3: Output voltage setting resistors (VO to FB resistance)

- Place  $C_{IN}$  and  $C_{OUT}$  as close to the MPM80 as possible.
- Connect R1, R2, and R3 from the output voltage connection point to the SGND (5th) pin.
- A switching current flows through the PGND (4th) pin along the connection between  $C_{OUT}$  and the MPM80 and therefore the common impedance of the GND loop and the switching current cause a voltage drop. Note that connecting this circuit to the GND point for output voltage detecting resistance may result in deterioration of regulation.

Functional Block Diagram



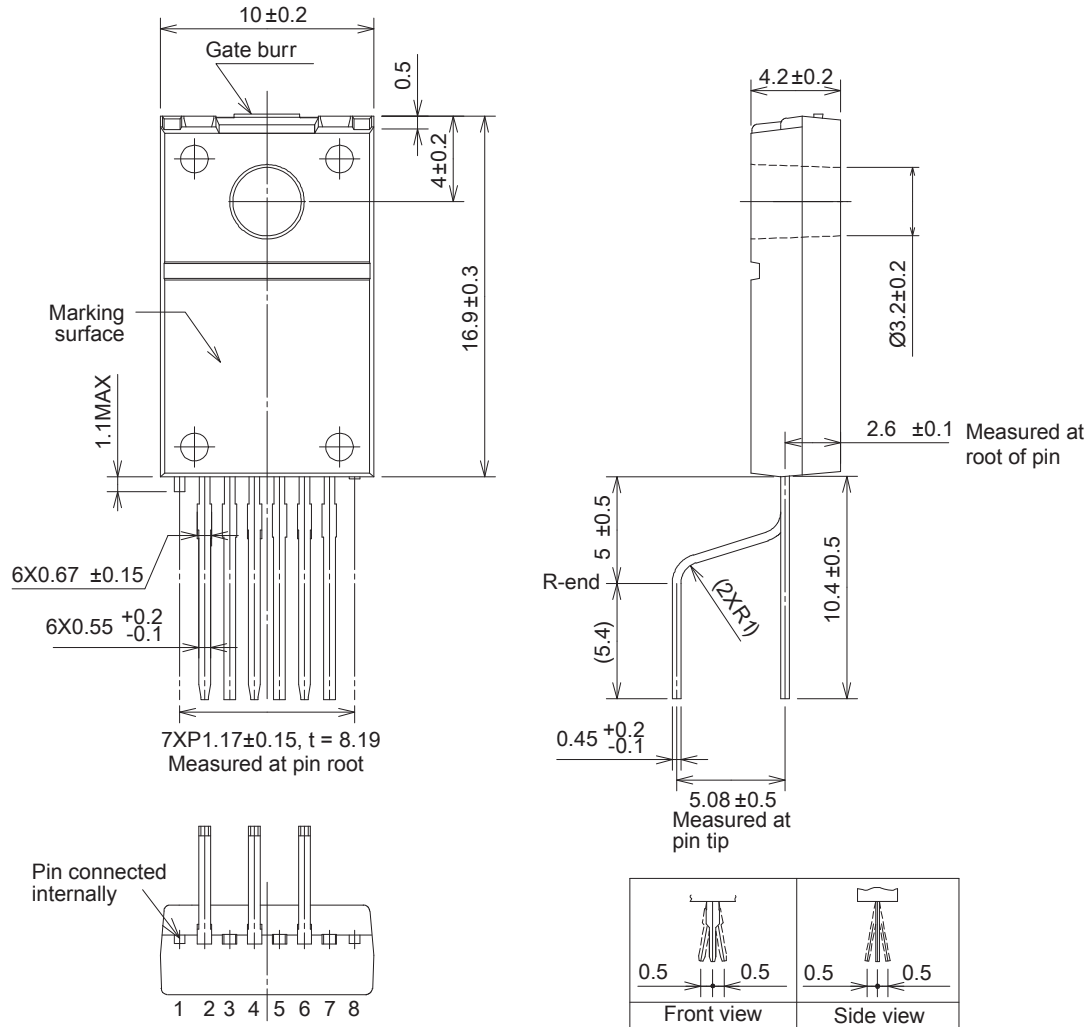
Pin-out Diagram



Pin List Table

Number	Name	Function
2	NC	Not connected
3	VIN	Power input
4	PGND	Ground, power circuits
5	SGND	Ground, control circuits
6	VO	Output
7	FB	Feedback

Package Outline Drawing, TO-220-8L, Straight Staggered Leads Option



Unit: mm  
 Gate burr: 0,3 mm (max)  
 Pin core material: Cu  
 Pin treatment: Cu + solder dip  
 Product weight: Approximately 20 g  
 Heatsink screw tightening torque: 6 to 8 kgf · cm

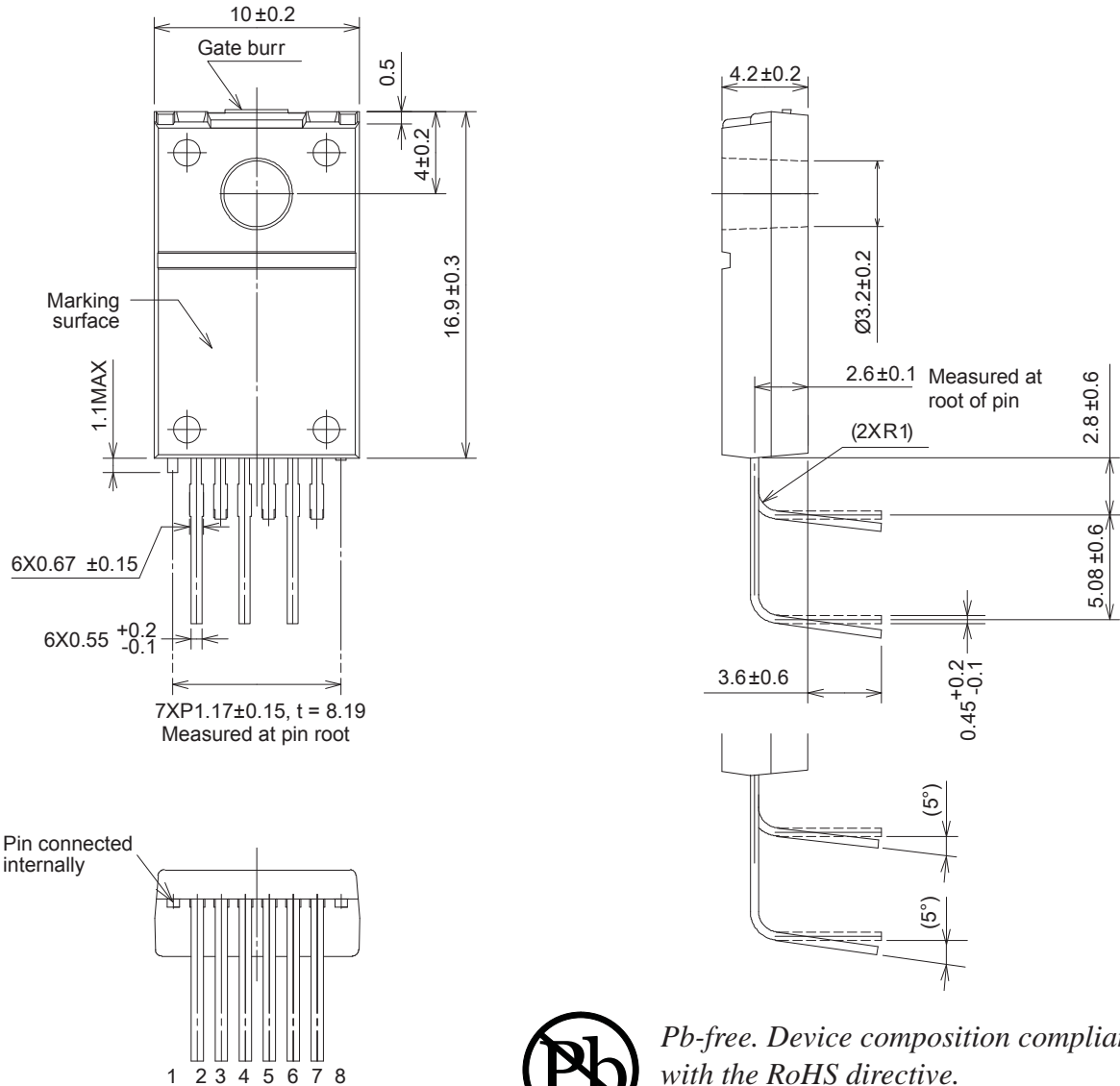


*Pb-free. Device composition compliant with the RoHS directive.*

Package Marking

Line 1. Product name: MPM8x  
 Line 1. Lot number  
 1st character: Last one digit of year  
 2nd character: Manufacture month  
 Jan. to Sep. = 1 to 9  
 Oct. = O, Nov. = N, Dec. = D  
 3rd and 4th characters: Manufacture day of month, 1 to 31

Package Outline Drawing, TO-220-8L, Right Angle Staggered Leads Option (-R)



Pb-free. Device composition compliant with the RoHS directive.

Unit: mm  
 Gate burr: 0,3 mm (max)  
 Pin core material: Cu  
 Pin treatment: Cu + solder dip  
 Product weight: Approximately 20 g  
 Heatsink screw tightening torque: 6 to 8 kgf • cm

Package Marking

Line 1. Product name: MPM8x  
 Line 1. Lot number  
 1st character: Last one digit of year  
 2nd character: Manufacture month  
 Jan. to Sep. = 1 to 9  
 Oct. = O, Nov. = N, Dec. = D  
 3rd and 4th characters: Manufacture day of month, 1 to 31

### Cautions and Warnings

- The parallel operation to increase the current is not available.
- Thermal shutdown. The MPM01 has a thermal protection circuit. This circuit keeps the IC from overheating due to overload. But this circuit cannot guarantee long-term reliability against continuously overloaded status.
- Heat radiation and reliability. The reliability of an IC is inseparable from the temperature in its operation. Careful consideration should be given to heat radiation and a sufficient safety margin must be allowed when designing a heatsink. When mounting the MPM01 to the heatsink, be sure to apply silicone grease and securely screw it. Please use one of the following greases we suggest:

Type	Suppliers
G746	Shin-Etsu Chemical Co., Ltd.
YG6260	Momentive Performance Materials Inc.
SC102	Dow Corning Toray Co., Ltd.

- Cautions for mounting to heatsink. When the flatness around screw holes is insufficient, such as when mounting the product

to the heatsink with extruded (burred) screw holes, the product can be damaged even with a lower screw torque than the recommended value. For mounting products, the mounting surface flatness should be 0.05 mm or less.

Please select suitable screws for product shape. Do not use a flat-head machine screw because of the stress to products. A tapping screw is not recommended for the packages. When using tapping screws, a screw may enter diagonally, not vertically, depending on the conditions of hole before threading or the work situation. That may stress on the products and may cause failures.

For tightening screws, if a tightening tool (such as a driver) hits the product, the package may crack, and stress, which shortens the element lifetimes and can cause the destruction, is put on internally. Tightening with an air driver makes a large impact. A screw torque higher than recommended torque can be applied and the package may be damaged. Therefore, an electric driver is recommended. When the package is secured at two or more places, tighten with the specified torque, after pre-tightening with a torque at all places. For using a driver, torque control is mandatory.

- 
- The contents in this document are subject to changes, for improvement and other purposes, without notice. Make sure that this is the latest revision of the document before use.
  - Application and operation examples described in this document are quoted for the sole purpose of reference for the use of the products herein and Sanken can assume no responsibility for any infringement of industrial property rights, intellectual property rights or any other rights of Sanken or any third party which may result from its use.
  - Although Sanken undertakes to enhance the quality and reliability of its products, the occurrence of failure and defect of semiconductor products at a certain rate is inevitable. Users of Sanken products are requested to take, at their own risk, preventative measures including safety design of the equipment or systems against any possible injury, death, fires or damages to the society due to device failure or malfunction.
  - Sanken products listed in this document are designed and intended for the use as components in general purpose electronic equipment or apparatus (home appliances, office equipment, telecommunication equipment, measuring equipment, etc.).

When considering the use of Sanken products in the applications where higher reliability is required (transportation equipment and its control systems, traffic signal control systems or equipment, fire/crime alarm systems, various safety devices, etc.), and whenever long life expectancy is required even in general purpose electronic equipment or apparatus, please contact your nearest Sanken sales representative to discuss, prior to the use of the products herein.

The use of Sanken products without the written consent of Sanken in the applications where extremely high reliability is required (aerospace equipment, nuclear power control systems, life support systems, etc.) is strictly prohibited.

- In the case that you use Sanken products or design your products by using Sanken products, the reliability largely depends on the degree of derating to be made to the rated values. Derating may be interpreted as a case that an operation range is set by derating the load from each rated value or surge voltage or noise is considered for derating in order to assure or improve the reliability. In general, derating factors include electric stresses such as electric voltage, electric current, electric power etc., environmental stresses such as ambient temperature, humidity etc. and thermal stress caused due to self-heating of semiconductor products. For these stresses, instantaneous values, maximum values and minimum values must be taken into consideration.

In addition, it should be noted that since power devices or IC's including power devices have large self-heating value, the degree of derating of junction temperature affects the reliability significantly.

- When using the products specified herein by either (i) combining other products or materials therewith or (ii) physically, chemically or otherwise processing or treating the products, please duly consider all possible risks that may result from all such uses in advance and proceed therewith at your own responsibility.
- Anti radioactive ray design is not considered for the products listed herein.
- Sanken assumes no responsibility for any troubles, such as dropping products caused during transportation out of Sanken's distribution network.
- The contents in this document must not be transcribed or copied without Sanken's written consent.