


NOTES: UNLESS OTHERWISE SPECIFIED

1.

NOTICE:	THIS IS A RoHS COMPLIANT COMPONENT/PRODUCT. ALL ENGINEERING CHANGES MUST HAVE PRIOR APPROVAL BY THE DESIGN CENTER.
RoHS 	

2. PLASTIC: THERMOSET PLASTIC MATERIAL WITH FLAMMABILITY RATING UL 94V-0 OR BETTER.

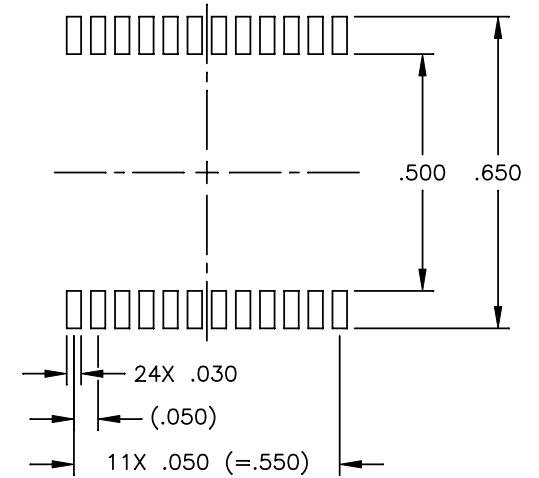
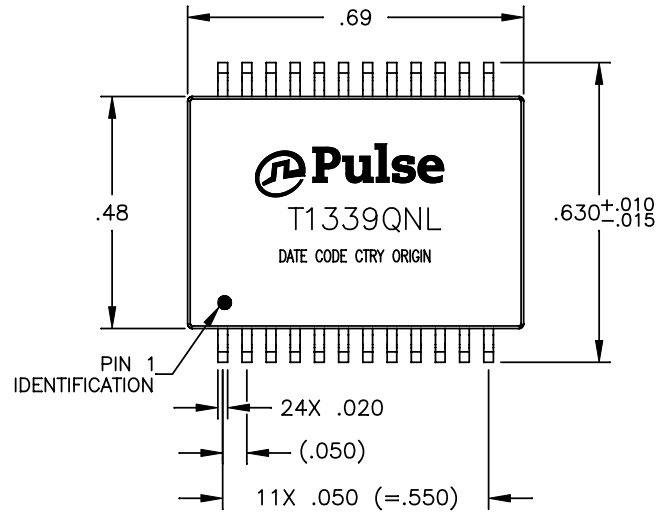
3. SOLDERABILITY: CONFORMS TO ANSI/J-STD-002, 245°C REFLOW PEAK TEMPERATURE PER IPC/EIA J-STD-003A

4. OPERATING TEMPERATURE: 0°C TO +70°C

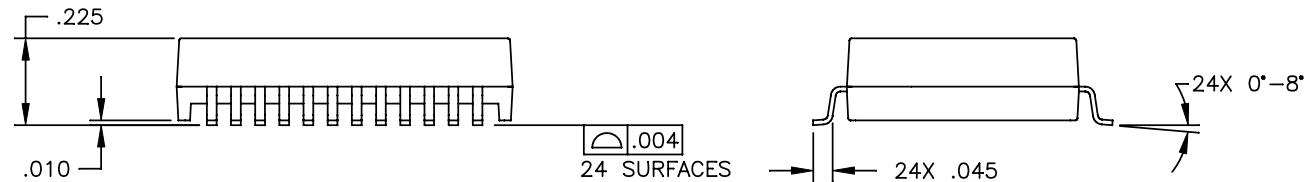
5. STORAGE TEMPERATURE: -20°C TO +125°C

6. JEDEC MOISTURE: LEVEL 1.

7. DIMENSIONS ARE IN INCHES WITH THE FOLLOWING TOLERANCES:
.XX = ±.02
.XXX = ±.010

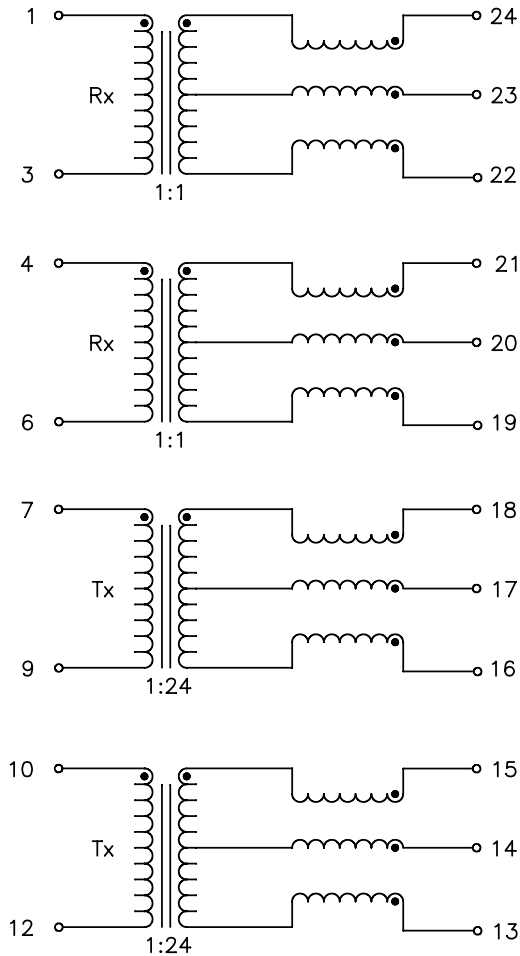


SUGGESTED LAND PATTERN



© Copyright, 2013. Pulse Electronics Corp. All rights reserved. Drawing specifications subject to change without notice. (08/08/13)

PULSE CONFIDENTIAL & PROPRIETARY	PRODUCT DESCRIPTION	PS DRAWING	SHEET:	DWG. NO./ PART NO.	REV.
	XFMR/CHK/X4, E1/T1, OPEN, 1:1,1:2.4	PS-2228.001-B	1	T1339QNL	M16



SCHEMATIC

ELECTRICAL CHARACTERISTICS AT +25°C

NO.	PARAMETER	SPECIFICATIONS			
1	TURNS RATIO @100 KHz, 0.02 VRMS	$\frac{(24^*-22)}{(1^*-3)} = \frac{(21^*-19)}{(4^*-6)} = 1.0 \pm 2\%$	$\frac{(15^*-13)}{(10^*-12)} = \frac{(18^*-16)}{(7^*-9)} = 2.4 \pm 2\%$	$\frac{(1^*-3)}{(23^*-22)} = \frac{(4^*-6)}{(20^*-19)} = 1.21 \pm 2\%$	$\frac{(17^*-16)}{(7^*-9)} = \frac{(14^*-13)}{(10^*-12)} = 1.9 \pm 2\%$
2	INDUCTANCE (OCL) @10 KHz, 0.2 VRMS	$(1-3) = (4-6) = 1.2 \text{ mH MINIMUM}$ $(7-9) = (10-12) = 1.2 \text{ mH MINIMUM}$			
3	DC RESISTANCE	$(1-3) = 1.0 \text{ OHMS MAXIMUM}$ $(4-6) = 1.0 \text{ OHMS MAXIMUM}$ $(7-9) = 1.0 \text{ OHMS MAXIMUM}$ $(10-12) = 1.0 \text{ OHMS MAXIMUM}$			
4	LEAKAGE INDUCTANCE @100 KHz, 0.1 VRMS	$(1-3) \text{ WITH } (24-22) \text{ SHORTED} = 0.9 \text{ uH MAXIMUM}$ $(4-6) \text{ WITH } (21-19) \text{ SHORTED} = 0.9 \text{ uH MAXIMUM}$ $(7-9) \text{ WITH } (18-16) \text{ SHORTED} = 0.7 \text{ uH MAXIMUM}$ $(10-12) \text{ WITH } (15-13) \text{ SHORTED} = 0.7 \text{ uH MAXIMUM}$			
5	CWW @ 100 KHz, 0.1 VRMS	$(1-3) \text{ TO } (24-22) = 35 \text{ pF MAXIMUM}$ $(10-12) \text{ TO } (15-13) = 35 \text{ pF MAXIMUM}$ $(4-6) \text{ TO } (21-19) = 35 \text{ pF MAXIMUM}$ $(7-9) \text{ TO } (18-16) = 35 \text{ pF MAXIMUM}$			
6	CROSS TALK	1 MHz	5 MHz	10 MHz	
		-60 dB MINIMUM	-50 dB MINIMUM	-40 dB MINIMUM	
7	HIPOT	1500 VRMS FOR 60 SECS			