

## Pulse Offerings

- 
**Pulse SmartER Splitter™ Modules**  
*(patent pending)*



- 
**Pulse SMART Splitter™ Modules**  
*(patent pending)*

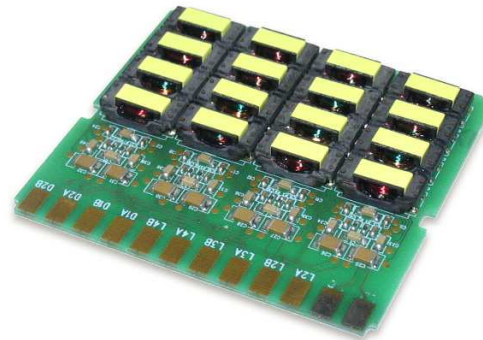


- 
**\*Excelsus Customer Premise Equipment (CPE) Filters**









\*Excelsus is a brand of Pulse.





- 
**Custom MDF Boards**

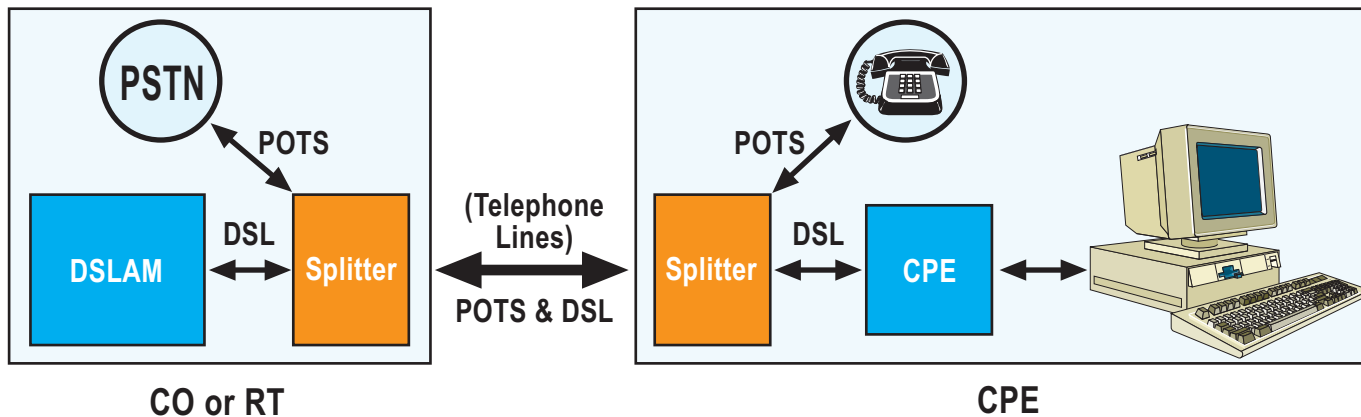


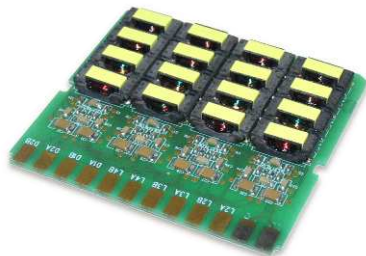
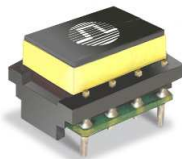
## Applications

- 
 DLC (Digital Loop Carrier)
- 
 DSLAM (Digital Subscriber Line Access Multiplexer)
- 
 Remote Terminals (RT)
- 
 Central Office Splitter Cards
- 
 Customer Premise Splitters
- 
 Customer Premise Micro Filters

## Technologies and Standards

- 
 ADSL, ADSL2, ADSL2+
- 
 VDSL, VDSL2
- 
 ANSI/ETSI/ITU
- 
 DSL FORUM, HPNA





# DSL Splitter Guide



SmartER SPLITTER™ MODULES			SMART SPLITTER™ MODULES			EXCELSUS® CPE SPLITTERS & MICRO FILTERS			
<b>Part No.</b>	<b>Application</b>	<b>Impedance Standard</b>	<b>Part No.</b>	<b>Application</b>	<b>Impedance Standard</b>	<b>EXCELSUS VIDEO GRADE SPLITTERS</b>			
<b>B8802NL</b>	xDSL/POTS	ANSI complex impedance (US) - CPE ITU Spec 992.1 Annex E2	<b>B8041</b>	ADSL/POTS	600Ω ETSI real impedance	<b>Region</b>	<b>Application</b>	<b>Part Number</b>	<b>Specification</b>
<b>B8813NL</b>	xDSL/POTS	ANSI complex impedance (US) - CO ITU Spec 992.1 Annex E2	<b>B8042</b>	ADSL/ISDN	135Ω Line Impedance, ISDN 2B1Q (Europe), ETSI Spec. TS 101-952-1-3	Americas	xDSL/POTS	<b>CP-V413S</b> <b>CP-V413TJ45</b>	ANSI T1.413 ANSI T1.413
<b>B8817NL</b>	xDSL/POTS	China MII relaxed spec	<b>B8045</b>	ADSL/ISDN	150Ω Line Impedance, ISDN 4B3T DT Complex Impedance	Europe	POTS POTS POTS and ISDN	<b>CP-401TJ45</b> <b>CP-V501TJ45</b> <b>CP-404TJ45</b>	ETSI TS 101 952-1-1 ETSI TS 101 952 2-1 ETSI TS 101 952-1-4
<b>B8841NL</b>	xDSL/POTS	600Ω ETSI real impedance	<b>B8245</b>	ADSL/ISDN	150Ω Line Impedance, ISDN 4B3T, DT Complex Impedance – Compliant (Germany)	<b>Country Specific</b>			
<b>B8842NL</b>	xDSL/POTS ISDN	Combo ISDN 2B1Q 135Ω + 4B3T 150Ω ETSI Spec. TS 101-952-1-3	<b>B8546</b>	ADSL/POTS	BT SIN-346 Complex Impedance (UK)	Sweden	POTS	<b>CP-421SE</b>	Skanova Network's 304/1056-KDUA 101 110 Rev. D
<b>B8845NL</b>	xDSL/POTS	ISDN 4B3T 150Ω + DT Complex Impedance - ETSI Spec. TS 101-952-1-4	<b>B8216</b>	ADSL/POTS	BT SIN-346 Complex Impedance (UK) With protections (K20 compliant)	Czechoslovakia	POTS and ISDN	<b>CP-404TJ11</b>	Cesky Telecom TPK 2092 C for ADSL2+
<b>B8846NL</b>	xDSL/POTS	BT SIN-346 Complex Impedance (UK) + ETSI101-952-1-1 optionB	<b>B8049</b>	ADSL/POTS	ETSI Complex Impedance (Europe) Option A of ETSI Spec. TS 101-952-1-1	Norway	POTS and ISDN	<b>CP-404TJ45</b>	Telenor's specification for CPE splitters
<b>B8849NL</b>	xDSL/POTS	ETSI Complex Impedance (Europe) Option A of ETSI Spec. TS 101-952-1-1	<b>B8549</b>	ADSL/POTS	ETSI Complex Impedance (Europe) Option A of ETSI Spec. TS 101-952-1-1	<b>EXCELSUS MICRO FILTERS</b>			
<b>B8850NL</b>	xDSL/POTS	ETSI Complex Impedance (Europe) Option A of ETSI Spec. TS 101-952-1-1 fully compliant 300 mA saturating current	<b>B8120</b>	ADSL/POTS	ANSI complex impedance (US) ITU Spec 992.1 Annex E2	<b>Region</b>	<b>Application</b>		
<b>B8859NL</b>	xDSL/POTS	ETSI Complex Impedance (Europe) Option A of ETSI Spec. TS 101-952-1-1 fully compliant	<b>B8120A</b>	ADSL/POTS	ANSI complex impedance (US) ITU Spec 992.1 Annex E2	North America	<b>Z-330PJ, Z-330P2J-A, Z-300TJ, Z-300LS</b>		
			<b>BX8214</b>	ADSL/POTS	ANSI complex impedance (US), ITU G992.1 Annex E2 (B804x 12 mm package)	South America	<b>Z-301LS-G</b>		
			<b>BX8270</b>	ADSL/POTS	ITU G992.1 Annex E2 for Korea CPE (B8120 package)	Europe	<b>Z-230PJ, Z-300TJ Z-301LS</b> <b>Z-450UK, Z-420UKP2J, Z-350UK</b> <b>Z-471BE, Z-250IT, Z-250FR</b>		
			<b>BX8296</b>	ADSL/POTS	ANSI T.421 standard	Middle East and Asia	<b>Z-301LS</b>		
						Australia	<b>Z-490TJ45</b>		
						<b>EXCELSUS MDU</b>			
						<b>Part No.</b>	<b>Description</b>	<b>Application</b>	
						<b>KHZ-023-6625FF</b>	24 Port Splitter intergrated into a 66 Punch down block	VDSL2 and HPN	
						<b>EXCELSUS HPNA PRODUCTS</b>			
						<b>B-V175</b>	Twisted Pair to Coaxial Balun	VDSL2 and HPN	

NOTE: Custom circuits and mechanical designs available.

Pulse website: <http://www.pulseeng.com> • Excelsus website: <http://www.excelsus-tech.com> • Telecom Email: [prodinfo\\_telecom@pulseeng.com](mailto:prodinfo_telecom@pulseeng.com)