

SR7805 Series

Low Cost, Non-isolated Wide Input, Single Output POL Switching Regulators



Key Features:

- Efficiency to 96%
- 500 mA Output Current
- Compact SIP Case
- LM78xx Replacement
- Wide Input Range
- Short Circuit Protected
- Thermal Shutdown
- Low Noise
- **Low Low Cost**



MicroPower Direct

292 Page Street
Suite D
Stoughton, MA 02072
USA

T: (781) 344-8226
F: (781) 344-8481
E: sales@micropowerdirect.com
W: www.micropowerdirect.com



Electrical Specifications

Specifications typical @ +25°C, nominal input voltage & rated output current, unless otherwise noted. Specifications subject to change without notice.

Output

Parameter	Conditions	Min.	Typ.	Max.	Units
Output Voltage Accuracy			±2.0	±3.0	%
Line Regulation, VIN = Min to Max	1.5 - 2.5 VOUT Models		±0.5	±1.0	%
	3.3 - 15 VOUT Models		±0.2	±0.4	
Load Regulation, IOUT = 10% to 100%	1.5 - 2.5 VOUT Models		±0.4	±0.75	%
	3.3 - 15 VOUT Models		±0.4	±0.6	
Ripple & Noise (20 MHz)			25	35	mV P - P
Thermal Shutdown	See Note 2		150		°C
Quiescent Current	See Note 3		5	8	mA
Temperature Coefficient				0.02	%/°C
Capacitive Load				1,000	µF
Short Circuit Input Power			0.5	1.8	W
Output Short Circuit	Continuous (Autorecovery)				

General

Parameter	Conditions	Min.	Typ.	Max.	Units
Isolation Voltage	Not Isolated				
Switching Frequency		280	330	450	kHz

Environmental

Parameter	Conditions	Min.	Typ.	Max.	Units
Operating Temperature Range	Ambient	-40	+25	+85	°C
Operating Temperature Range	Case			+100	°C
Storage Temperature Range		-55		+125	°C
Lead Temperature	1.5 mm From Case For 10 Sec			300	°C
Cooling	Free Air Convection				
Humidity	RH, Non-condensing			95	%

Physical

Case Size	0.46 x 0.295 x 0.40 Inches (11.6 x 7.50 x 10.2 mm)				
Case Material	Non-Conductive Black Plastic (UL-94V0)				
Weight	0.07 Oz (2.0g)				

Reliability Specifications

Parameter	Conditions	Min.	Typ.	Max.	Units
MTBF	MIL HDBK 217F, 25°C, Gnd Benign	2.0			MHours

www.micropowerdirect.com

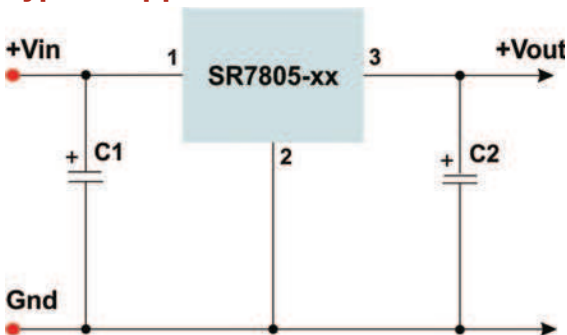
Model Selection Guide

Model Number	Input Voltage (VDC)		Output		Efficiency (% Typ)	
	Nom.	Range	Voltage (VDC)	Current (mA, Max)	Min Vin	Max Vin
SR7805-015W	12	4.75 - 26.0	1.5	500.0	76	66
SR7805-018W	12	4.75 - 28.0	1.8	500.0	79	67
SR7805-02W	12	4.75 - 28.0	2.5	500.0	85	73
SR7805-03W	24	4.75 - 28.0	3.3	500.0	90	80
SR7805-05W	24	6.50 - 32.0	5.0	500.0	93	84
SR7805-06W	24	8.00 - 32.0	6.5	500.0	94	87
SR7805-09W	24	11.0 - 32.0	9.0	500.0	95	91
SR7805-12W	24	15.0 - 32.0	12.0	500.0	95	92
SR7805-15W	24	18.0 - 32.0	15.0	500.0	96	93

Notes:

1. Load regulation is specified for an output load change of 10% to 100%.
2. Measured at an internal IC junction.
3. Quiescent current is specified at 0% load for Vin = min to max.
4. This regulator is not designed to be used in parallel with another unit to increase output power.
5. The input should not exceed the range given in the model selection chart. Exceeding this limit could damage the unit.
6. The output current limit is 3A for the 1.5 - 3.3V output models, 2A for all other models.

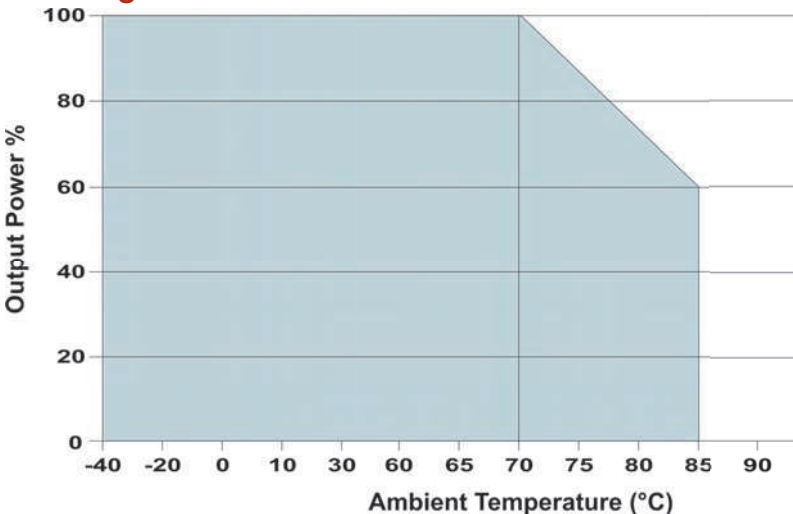
Typical Application Circuit



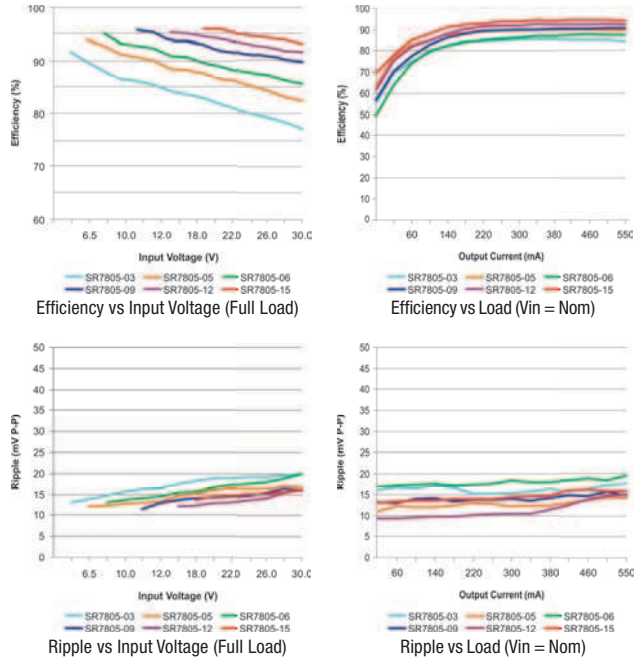
Notes:

1. C1 is a low ESR ceramic capacitor used to minimize noise at the regulator. A tantalum or low ESR electrolytic capacitor may also be used.
2. C1 & C2 are required and should be mounted as close to the regulator pins as possible.

Derating Curve



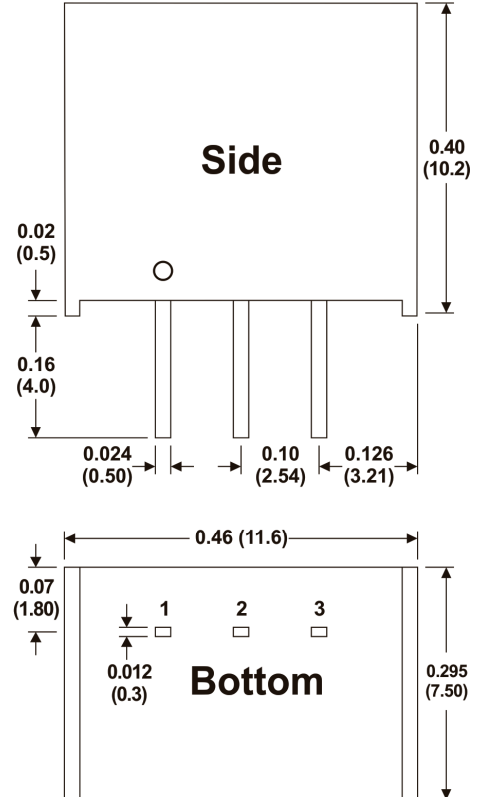
Characteristic Curves (Efficiency & Ripple)



Component Values

Model Number	Capacitors	
	C1 (μF/V)	C2 (μF/V)
SR7805-015W	10 / 50	22 / 6.3
SR7805-018W	10 / 50	22 / 6.3
SR7805-02W	10 / 50	22 / 6.3
SR7805-03W	10 / 50	22 / 6.3
SR7805-05W	10 / 50	22 / 10
SR7805-06W	10 / 50	22 / 10
SR7805-09W	10 / 50	22 / 16
SR7805-12W	10 / 50	22 / 25
SR7805-15W	10 / 50	22 / 25

Mechanical Dimensions



Pin Connection

Pin	Function
1	+Vin
2	Gnd
3	+Vout

Notes:

- All dimensions are typical in inches (mm)
- Tolerance x.xx = ±0.01 (±0.25)
- Pin 1 is marked by a "dot" or indentation on the side of the unit



MicroPower Direct
We Power Your Success - For Less!