



**1A Low Dropout Positive Voltage Regulators**

**Features**

- Dropout Guaranteed <1.3V at Full Load Current
- Fast Transient Response
- Voltage Reference Initial Accuracy of 2%
- Built-In Thermal Shutdown
- Available in RoHS-compliant SOT-223, D-Pak, and SOT-89 surface-mount packages.

**Applications**

- VGA and Sound Card Applications
- Low-voltage High-speed Termination Applications
- Standard 3.3V Chip Set and Logic Applications

**Description**

The APU1117 is a low-dropout, three-terminal adjustable regulator with minimum of 1A output current capability, specifically designed to provide a well-regulated supply for low-voltage IC applications such as high-speed bus termination and low-current 3.3V logic supplies. The APU1117 is also well suited for other applications such as VGA and sound cards, and is guaranteed to have a drop-out voltage less than 1.3V at full load, making it ideal to provide well-regulated outputs of 2.5V to 3.6V from 4.75V to 7V input supplies.

**Typical Application**

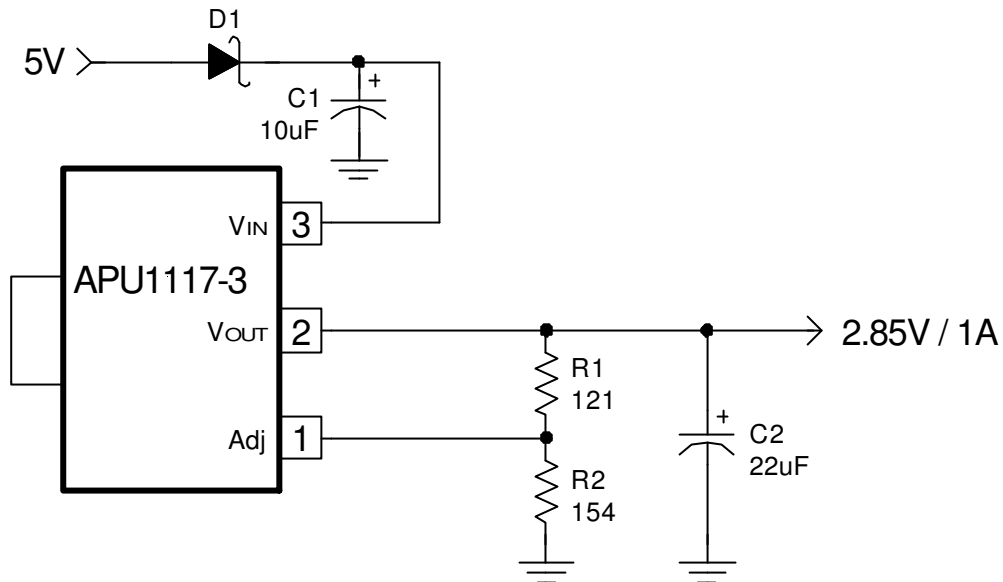


Figure 1 - Typical application of APU1117-3 in a 5V to 2.85V SCSI termination regulator.

**Ordering information**



Example: APU1117K-3TR     Adjustable output voltage in RoHS-compliant SOT-223, shipped on tape and reel, 3000pcs/reel

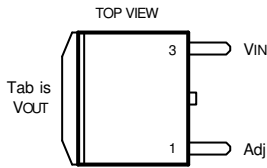


## Absolute Maximum Ratings

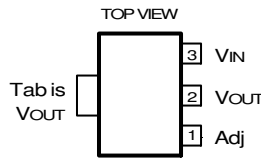
Input Voltage ( $V_{IN}$ ) .....	7V
Power Dissipation .....	Internally Limited
Storage Temperature Range .....	-65°C To 150°C
Operating Junction Temperature Range .....	0°C To 150°C
Thermal Resistance, Junction-Ambient: TO-252 .....	70°C/W for 0.5" square pad
SOT-89 .....	100°C/W for minimum pad
SOT-223.....	90°C/W for 0.4" square pad

## Pin Configurations

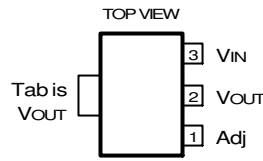
2-PIN PLASTIC TO-252 (H)



3-PIN PLASTIC SOT-89 (G)



3-PIN PLASTIC SOT-223 (K)



## Electrical Specifications

Unless otherwise specified, these specifications apply over  $C_{IN}=1\mu F$ ,  $C_{OUT}=10\mu F$ , and  $T_J=0$  to 150°C. Typical values refer to  $T_J=25^\circ C$ .

PARAMETER	SYM	TEST CONDITION	MIN	TYP	MAX	UNITS
Reference Voltage	$V_{REF}$	$I_o=10mA$ , $T_J=25^\circ C$ , $(V_{IN}-V_o)=1.5V$	1.225	1.250	1.275	V
Line Regulation		$I_o=10mA$ , $1.3V < (V_{IN}-V_o) < 7V$			0.2	%
Load Regulation (Note 1)		$V_{IN}=3.3V$ , $V_{ADJ}=0$ , $10mA < I_o < 1A$			1	%
Dropout Voltage (Note 2)	$\Delta V_o$	Note 2, $I_o=1A$		1.1	1.3	V
Current Limit		$V_{IN}=3.3V$ , $\Delta V_o=100mV$	1.1			A
Minimum Load Current (Note 3)		$V_{IN}=3.3V$ , $V_{ADJ}=0V$		5	10	mA
Thermal Regulation		30ms Pulse, $V_{IN}-V_o=3V$ , $I_o=1A$		0.01	0.02	%/W
Ripple Rejection		$f=120Hz$ , $C_o=25\mu F$ Tantalum, $I_o=0.5A$ , $V_{IN}-V_o=3V$	60	70		dB
Adjust Pin Current	$I_{ADJ}$	$I_o=10mA$ , $V_{IN}-V_o=1.5V$ , $T_J=25^\circ C$ , $I_o=10mA$ , $V_{IN}-V_o=1.5V$		55	120	$\mu A$
Adjust Pin Current Change		$I_o=10mA$ , $V_{IN}-V_o=1.5V$ , $T_J=25^\circ C$		0.2	5	$\mu A$
Temperature Stability		$V_{IN}=3.3V$ , $V_{ADJ}=0V$ , $I_o=10mA$		0.5		%
Long Term Stability		$T_J=125^\circ C$ , 1000 hours		0.3	1	%
RMS Output Noise		$T_J=25^\circ C$ , $10Hz < f < 10kHz$		0.003		% $V_o$

**Note 1:** Low duty-cycle pulse testing with Kelvin connections is required in order to maintain accurate data.

**Note 2:** Dropout voltage is defined as the minimum differential voltage between  $V_{IN}$  and  $V_{OUT}$  required to maintain regulation at  $V_{OUT}$ . It is measured when the output voltage drops 1% below its nominal value.

**Note 3:** Minimum load current is defined as the minimum current required at the output in order for the output voltage to maintain regulation. Typically, the resistor dividers are selected such that it automatically maintains this current.

THIS PRODUCT IS SENSITIVE TO ELECTROSTATIC DISCHARGE, PLEASE HANDLE WITH CAUTION.

USE OF THIS PRODUCT AS A CRITICAL COMPONENT IN LIFE SUPPORT OR OTHER SIMILAR SYSTEMS IS NOT AUTHORIZED.

APEC DOES NOT ASSUME ANY LIABILITY ARISING OUT OF THE APPLICATION OR USE OF ANY PRODUCT OR CIRCUIT DESCRIBED HEREIN; NEITHER DOES IT CONVEY ANY LICENSE UNDER ITS PATENT RIGHTS, NOR THE RIGHTS OF OTHERS.

APEC RESERVES THE RIGHT TO MAKE CHANGES WITHOUT FURTHER NOTICE TO ANY PRODUCTS HEREIN TO IMPROVE RELIABILITY, FUNCTION OR DESIGN.



## Pin Descriptions

PIN #	PIN SYMBOL	PIN DESCRIPTION
1	Adj	A resistor divider from this pin to the $V_{OUT}$ pin and ground sets the output voltage.
2	$V_{OUT}$	The output of the regulator. A capacitor of at least $10\mu\text{F}$ must be connected from this pin to ground to ensure stability.
3	$V_{IN}$	The input pin of the regulator. Typically a large storage capacitor is connected from this pin to ground to ensure that the input voltage does not sag below the minimum dropout voltage during the load transient response. This pin must always be $1.3\text{V}$ higher than $V_{OUT}$ in order for the device to regulate properly.

## Block Diagram

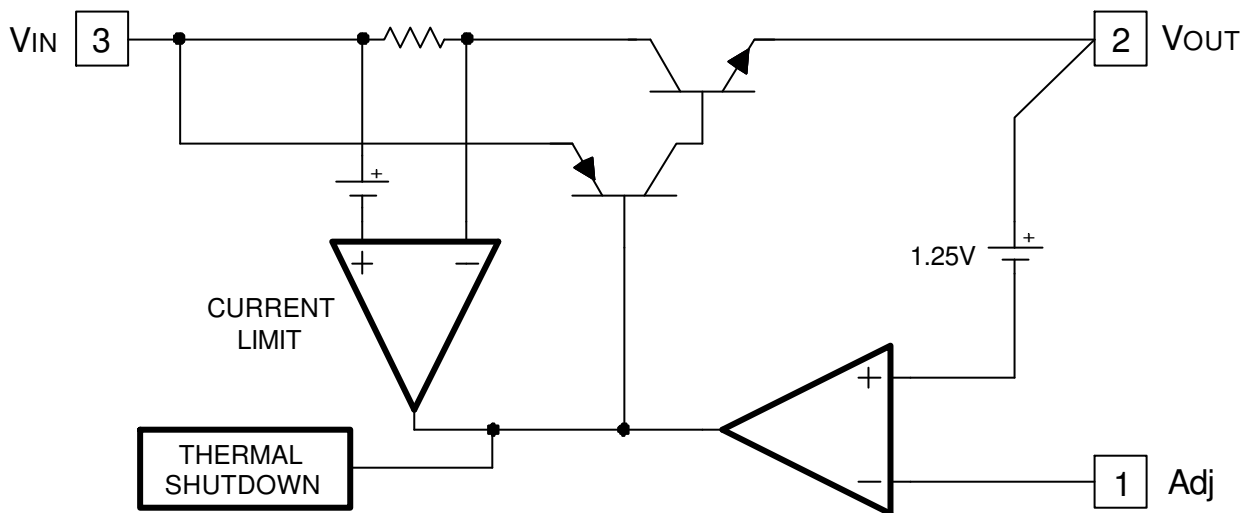


Figure 2 - Simplified block diagram of the APU1117-3.

## Application Information

### Introduction

The APU1117 adjustable Low Dropout (LDO) regulator is a three-terminal device which can easily be programmed with the addition of two external resistors to any voltage within the range of 1.25 to 5.5V. This regulator, unlike the first generation of the three-terminal regulators such as LM117 that required 3V differential between the input and the regulated output, only needs 1.3V differential to maintain output regulation. This is a key requirement for today's low voltage IC applications that typically need 3.3V supply and are often generated from the 5V supply. Other applications such as high speed

memory termination need to switch the load current from zero to full load in tens of nanoseconds at their pins, which translates to approximately 300 to 500ns current step at the regulator. In addition, the output voltage tolerances are sometimes tight and they include the transient response as part of the specification.

The APU1117 is specifically designed to meet the fast current transient needs as well as providing an accurate initial voltage, reducing the overall system cost with the need for fewer output capacitors.



## Application Information (cont.)

### Output Voltage Setting

The APU1117 can be programmed to any voltage in the range of 1.25V to 5.5V with the addition of R1 and R2 external resistors according to the following formula:

$$V_{OUT} = V_{REF} \times \left(1 + \frac{R_2}{R_1}\right) + I_{ADJ} \times R_2$$

Where:

$V_{REF} = 1.25V$  typically

$I_{ADJ} = 50\mu A$  typically

R1 and R2 as shown in Figure 3:

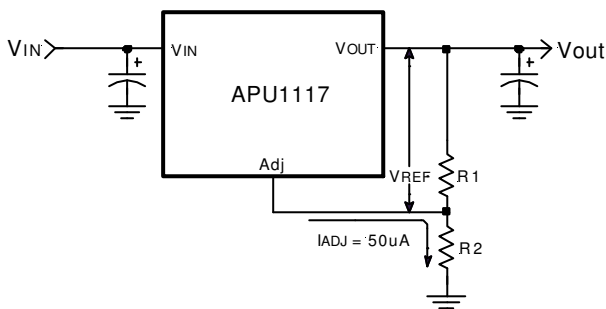


Figure 3 - Typical application of the APU1117 for programming the output voltage.

The APU1117 keeps a constant 1.25V between the output pin and the adjust pin. By placing a resistor R1 across these two pins a constant current flows through R1, adding to the  $I_{ADJ}$  current and into the R2 resistor producing a voltage equal to the  $(1.25/R_1) \times R_2 + I_{ADJ} \times R_2$  which will be added to the 1.25V to set the output voltage. This is summarized in the above equation. Since the minimum load current requirement of the APU1117 is 10mA, R1 is typically selected to be 121Ω resistor so that it automatically satisfies the minimum current requirement. Notice that since  $I_{ADJ}$  is typically in the range of 50μA it only adds a small error to the output voltage and should only be considered when a very precise output voltage setting is required. For example, in a typical 3.3V application where  $R_1=121\Omega$  and  $R_2=200\Omega$  the error due to  $I_{ADJ}$  is only 0.3% of the nominal set point.

### Load Regulation

Since the APU1117 is only a three-terminal device, it is not possible to provide true remote sensing of the output voltage at the load. Figure 4 shows that the best load regulation is achieved when the bottom side of R2 is connected to the load and the top side of R1 resistor is connected directly to the case or the  $V_{OUT}$  pin of the regulator and not to the load. In fact, if R1 is connected

to the load side, the effective resistance between the regulator and the load is gained up by the factor of  $(1 + R_2/R_1)$ , or the effective resistance will be  $R_{P(eff)} = R_P \times (1 + R_2/R_1)$ . It is important to note that for high current applications, this can represent a significant percentage of the overall load regulation and one must keep the path from the regulator to the load as short as possible to minimize this effect.

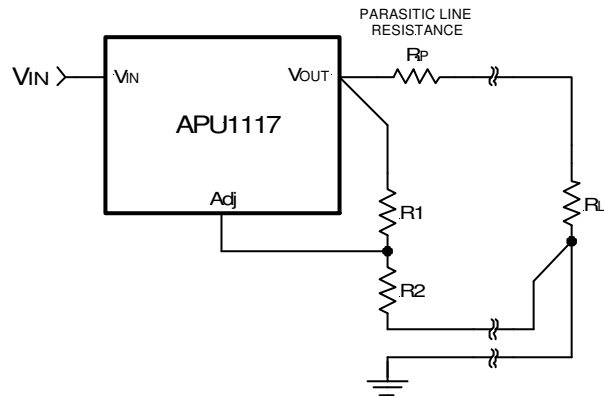


Figure 4 - Schematic showing connection for best load regulation.

### Stability

The APU1117 requires the use of an output capacitor as part of the frequency compensation in order to make the regulator stable. Typical designs for microprocessor applications use standard electrolytic capacitors with a typical ESR in the range of 50 to 100mΩ and an output capacitance of 500 to 1000μF. Fortunately as the capacitance increases, the ESR decreases resulting in a fixed RC time constant. The APU1117 takes advantage of this phenomena in making the overall regulator loop stable. For most applications a minimum of 100μF aluminum electrolytic capacitor such as Sanyo MVGX series, Panasonic FA series as well as the Nichicon PL series ensures both stability and good transient response.

### Thermal Design

The APU1117 incorporates an internal thermal shutdown that protects the device when the junction temperature exceeds the maximum allowable junction temperature. Although this device can operate with junction temperatures in the range of 150°C, it is recommended that the selected heat sink be chosen such that during maximum continuous load operation the junction temperature is kept below this number. The next example for a SCSI terminator application shows the steps in selecting the proper regulator in a surface-mount package.



## Application Information (cont.)

Assuming the following specifications:

$$\begin{aligned} V_{IN} &= 5V \\ V_F &= 0.5V \\ V_{OUT} &= 2.85V \\ I_{OUT(MAX)} &= 0.8A \\ T_A &= 35^\circ C \end{aligned}$$

Where:  $V_F$  is the forward voltage drop of the D1 diode as shown in Figure 5.

The steps for selecting the right package with proper board area for heatsinking to keep the junction temperature below  $135^\circ C$  are given as:

- 1) Calculate the maximum power dissipation using:

$$\begin{aligned} P_D &= I_{OUT} \times (V_{IN} - V_F - V_{OUT}) \\ P_D &= 0.8 \times (5 - 0.5 - 2.85) = 1.32W \end{aligned}$$

- 2) Calculate the maximum  $\theta_{JA}$  allowed for our example:

$$\theta_{JA(MAX)} = \frac{T_J - T_A}{P_D} = \frac{135 - 35}{1.32} = 75.6^\circ C/W$$

- 3) Select a package from the datasheet with lower  $\theta_{JA}$  than the one calculated in the previous step.

Selecting TO-252 (D-Pak) with at least 0.5" square of 0.062" FR4 board using 1 oz. copper has  $70^\circ C/W$  which is lower than the calculated number.

To set the output DC voltage, we need to select R1 and R2:

- 4) Assuming  $R_1 = 121\Omega$ , 1%:

$$R_2 = \left( \frac{V_{OUT}}{V_{REF}} - 1 \right) \times R_1 = \left( \frac{2.85}{1.25} - 1 \right) \times 121 = 154.8\Omega$$

Select  $R_2 = 154\Omega$ , 1%.

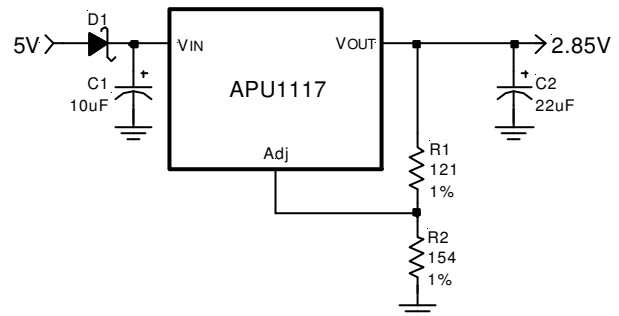


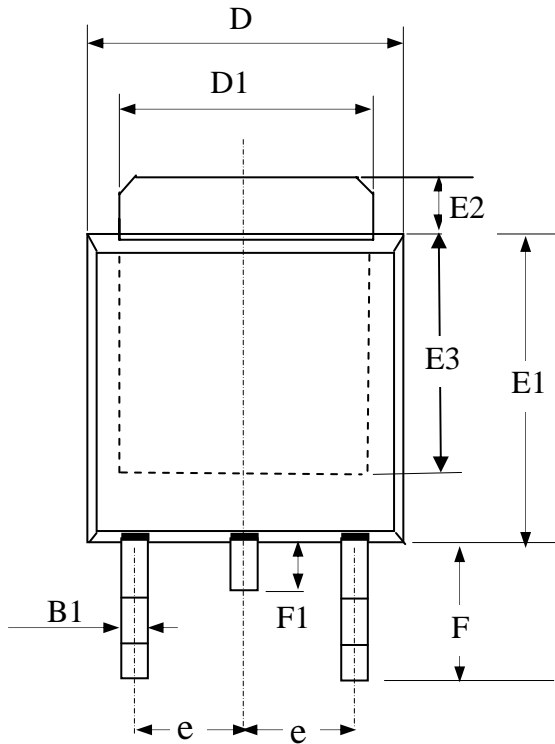
Figure 5 - Final Schematic for half of the GTL+ termination regulator.

### Layout Consideration

The output capacitors must be located as close to the  $V_{OUT}$  terminal of the device as possible. It is recommended to use a section of a layer of the PC board as a plane to connect the  $V_{OUT}$  pin to the output capacitors to prevent any high frequency oscillation that may result due to excessive trace inductance.

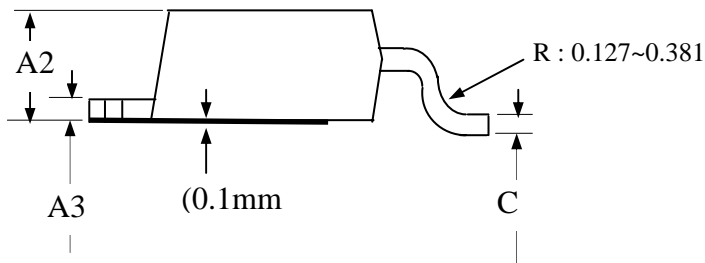


**Package Dimensions: TO-252**

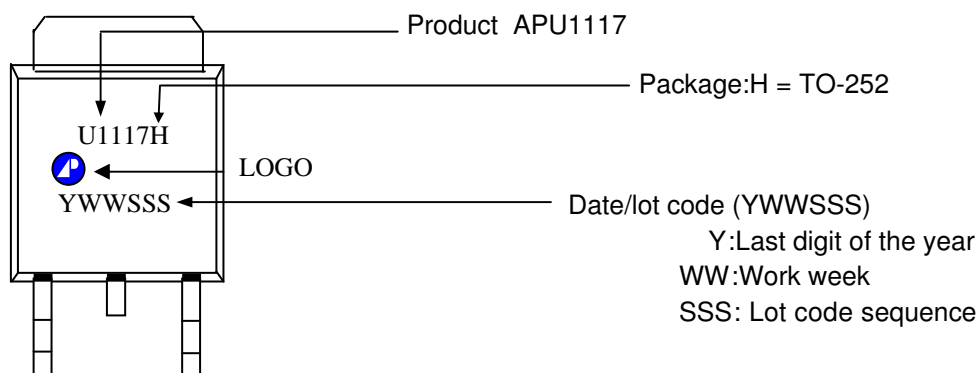


SYMBOLS	Millimeters		
	MIN	NOM	MAX
A2	1.80	2.30	2.80
A3	0.40	0.50	0.60
B1	0.40	0.70	1.00
D	6.00	6.50	7.00
D1	4.80	5.35	5.90
E3	3.50	4.00	4.50
F	2.20	2.63	3.05
F1	0.50	0.85	1.20
E1	5.10	5.70	6.30
E2	0.50	1.10	1.80
e	--	2.30	--
C	0.35	0.50	0.65

1. All dimensions are in millimeters.
2. Dimensions do not include lead dimensions.

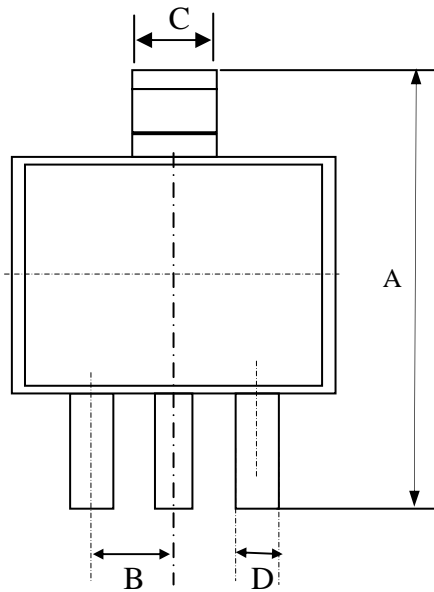


**Marking Information**

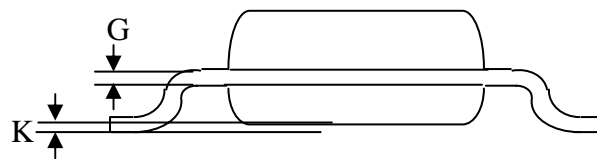
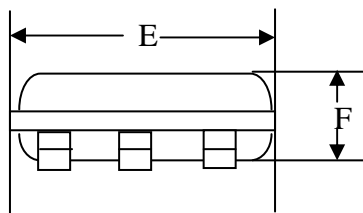




### Package Dimensions: SOT-223

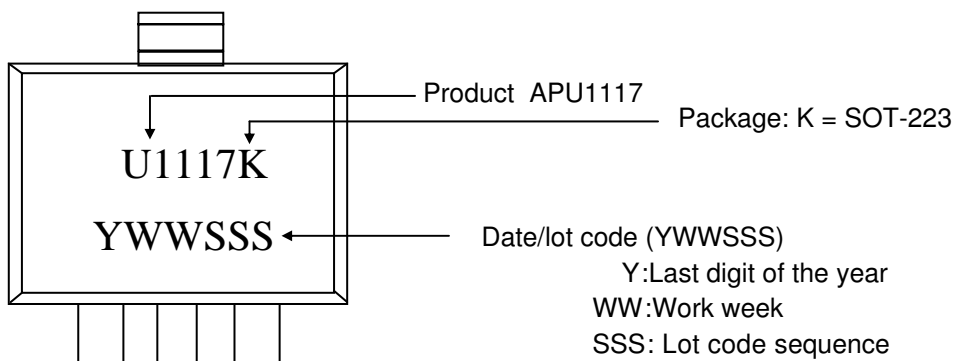


SYMBOLS	Millimeters		
	MIN	NOM	MAX
A	6.70	7.00	7.30
B	---	2.30	---
C	2.90	3.00	3.10
D	0.60	0.70	0.80
G	0.25	0.30	0.35
E	6.30	6.50	6.70
F	1.40	1.60	1.80
K	0.02	0.06	0.10



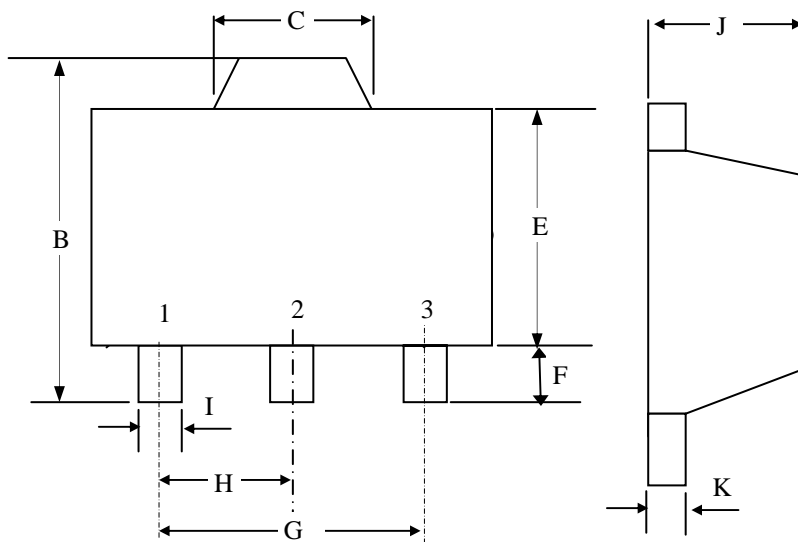
1. All dimensions are in millimeters.
2. Dimensions do not include mold protrusions.

### Marking Information



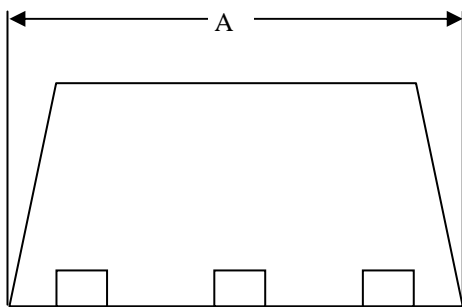


**Package Dimensions: SOT-89**

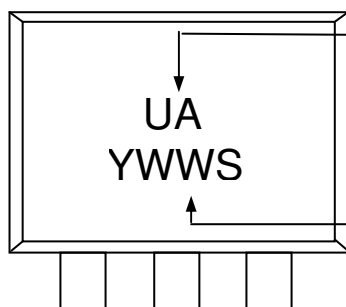


SYMBOLS	Millimeters		
	MIN	NOM	MAX
A	4.40	-	4.60
B	4.05	-	4.25
C	1.40	-	1.75
E	2.40	-	2.60
F	0.89	-	1.20
I	0.35	-	0.55
H	----	1.50	----
G	----	3.00	----
J	1.40	-	1.60
K	0.35	-	0.43

1. All dimensions are in millimeters.
2. Dimensions do not include mold protrusions.



**Marking Information**



Product: UA = AP1117G-3

Date/lot code (YWWS)

Y: Last digit of the year  
 WW: Work week  
 S: Lot code sequence