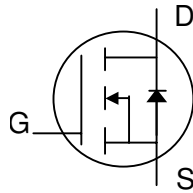




N-channel Enhancement-mode Power MOSFET

- 100% Avalanche-Tested**
- Simple Drive Requirement**
- Fast Switching Performance**
- RoHS-compliant, halogen-free**



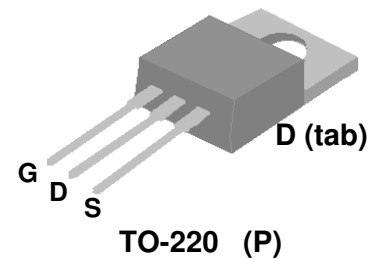
BV_{DS}	700V
$R_{DS(ON)}$	2.4Ω
I_D	4A

Description

Advanced Power MOSFETs from APEC provide the designer with the best combination of fast switching, low on-resistance and cost-effectiveness.

The AP04N70BP-H-HF-3 is in the TO-220 through-hole package which is widely used for commercial and industrial applications.

This device is well suited for use in high voltage applications such as off-line AC/DC converters.



Absolute Maximum Ratings

Symbol	Parameter	Rating	Units
V_{DS}	Drain-Source Voltage	700	V
V_{GS}	Gate-Source Voltage	±30	V
I_D at $T_C=25^\circ C$	Continuous Drain Current	4	A
I_D at $T_C=100^\circ C$	Continuous Drain Current	2.5	A
I_{DM}	Pulsed Drain Current ¹	15	A
P_D at $T_C=25^\circ C$	Total Power Dissipation	62.5	W
	Linear Derating Factor	0.5	W/°C
E_{AS}	Single Pulse Avalanche Energy ³	8	mJ
T_{STG}	Storage Temperature Range	-55 to 150	°C
T_J	Operating Junction Temperature Range	-55 to 150	°C

Thermal Data

Symbol	Parameter	Value	Units
Rthj-c	Maximum Thermal Resistance, Junction-case	2	°C/W
Rthj-a	Maximum Thermal Resistance, Junction-ambient	40	°C/W

Ordering Information

AP04N70BP-H-HF-3TB : in RoHS-compliant halogen-free TO-220, shipped in tubes (50 pieces per tube)



Electrical Specifications at $T_j=25^\circ\text{C}$ (unless otherwise specified)

Symbol	Parameter	Test Conditions	Min.	Typ.	Max.	Units
BV_{DSS}	Drain-Source Breakdown Voltage	$V_{GS}=0V, I_D=250\mu A$	700	-	-	V
$R_{DS(ON)}$	Static Drain-Source On-Resistance ³	$V_{GS}=10V, I_D=2A$	-	-	2.4	Ω
$V_{GS(th)}$	Gate Threshold Voltage	$V_{DS}=V_{GS}, I_D=250\mu A$	2	-	4	V
g_{fs}	Forward Transconductance	$V_{DS}=10V, I_D=2A$	-	3.6	-	S
I_{DSS}	Drain-Source Leakage Current	$V_{DS}=600V, V_{GS}=0V$	-	-	10	μA
	Drain-Source Leakage Current ($T_j=125^\circ\text{C}$)	$V_{DS}=480V, V_{GS}=0V$	-	-	500	μA
I_{GSS}	Gate-Source Leakage	$V_{GS}=\pm 30V, V_{DS}=0V$	-	-	± 100	nA
Q_g	Total Gate Charge ³	$I_D=4A$	-	19	-	nC
Q_{gs}	Gate-Source Charge	$V_{DS}=480V$	-	4	-	nC
Q_{gd}	Gate-Drain ("Miller") Charge	$V_{GS}=10V$	-	6.5	-	nC
$t_{d(on)}$	Turn-on Delay Time ³	$V_{DD}=300V$	-	11	-	ns
t_r	Rise Time	$I_D=4A$	-	9	-	ns
$t_{d(off)}$	Turn-off Delay Time	$R_G=10\Omega$	-	28	-	ns
t_f	Fall Time	$V_{GS}=10V$	-	12	-	ns
C_{iss}	Input Capacitance	$V_{GS}=0V$	-	950	-	pF
C_{oss}	Output Capacitance	$V_{DS}=25V$	-	75	-	pF
C_{rss}	Reverse Transfer Capacitance	$f=1.0\text{MHz}$	-	6	-	pF

Source-Drain Diode

Symbol	Parameter	Test Conditions	Min.	Typ.	Max.	Units
V_{SD}	Forward On Voltage ³	$I_S=4A, V_{GS}=0V$	-	-	1.5	V
t_{rr}	Reverse Recovery Time ³	$I_S=4A, V_{GS}=0V,$	-	500	-	ns
Q_{rr}	Reverse Recovery Charge	$di/dt=100A/\mu s$	-	3.8	-	μC

Notes:

1. Pulse width limited by maximum junction temperature.
2. Starting $T_j=25^\circ\text{C}$, $V_{DD}=50V$, $L=1\text{mH}$, $R_G=25\Omega$, $I_{AS}=4A$
3. Pulse test

THIS PRODUCT IS SENSITIVE TO ELECTROSTATIC DISCHARGE, PLEASE HANDLE WITH CAUTION.

USE OF THIS PRODUCT AS A CRITICAL COMPONENT IN LIFE SUPPORT OR OTHER SIMILAR SYSTEMS IS NOT AUTHORIZED.

APEC DOES NOT ASSUME ANY LIABILITY ARISING OUT OF THE APPLICATION OR USE OF ANY PRODUCT OR CIRCUIT DESCRIBED HEREIN; NEITHER DOES IT CONVEY ANY LICENSE UNDER ITS PATENT RIGHTS, NOR THE RIGHTS OF OTHERS.

APEC RESERVES THE RIGHT TO MAKE CHANGES WITHOUT FURTHER NOTICE TO ANY PRODUCTS HEREIN TO IMPROVE RELIABILITY, FUNCTION OR DESIGN.



Typical Electrical Characteristics

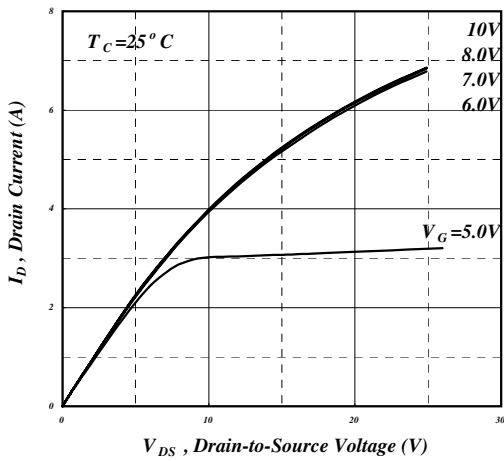


Fig 1. Typical Output Characteristics

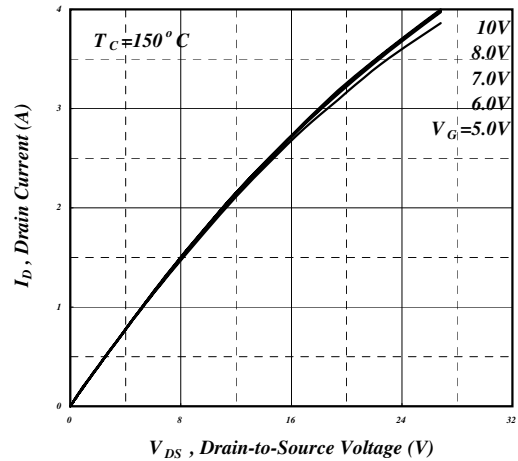


Fig 2. Typical Output Characteristics

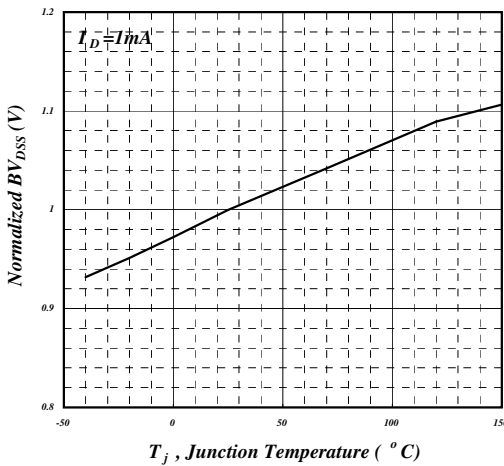


Fig 3. Normalized BV_{DSS} vs. Junction Temperature

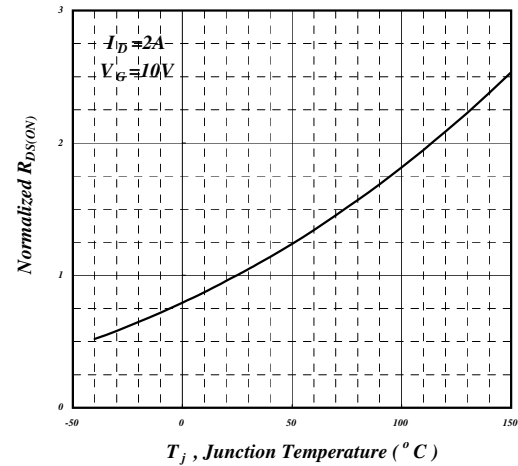


Fig 4. Normalized On-Resistance vs. Junction Temperature

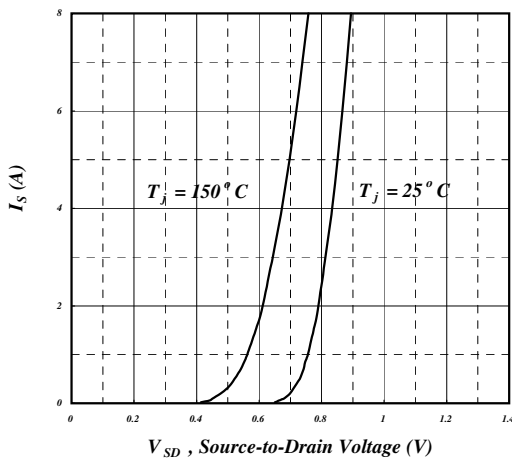


Fig 5. Forward Characteristic of Reverse Diode

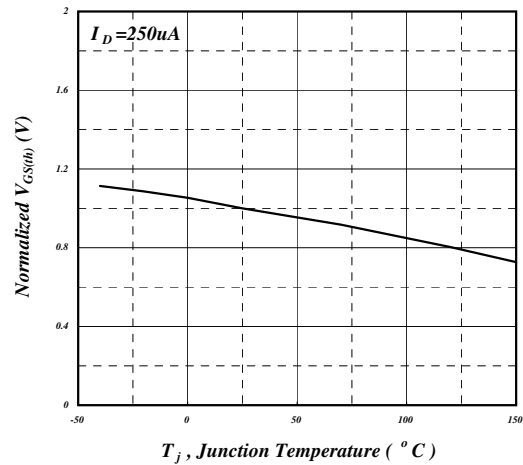


Fig 6. Gate Threshold Voltage vs. Junction Temperature



Typical Electrical Characteristics (cont.)

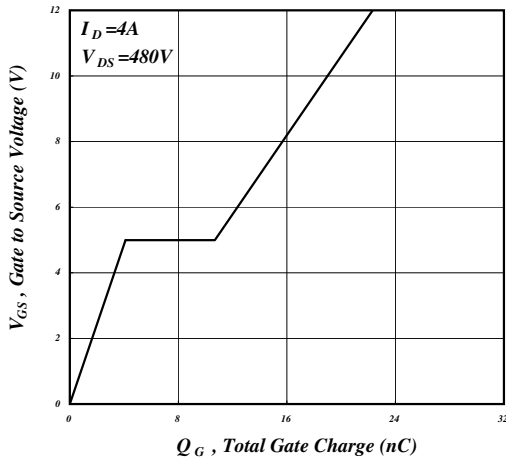


Fig 7. Gate Charge Characteristics

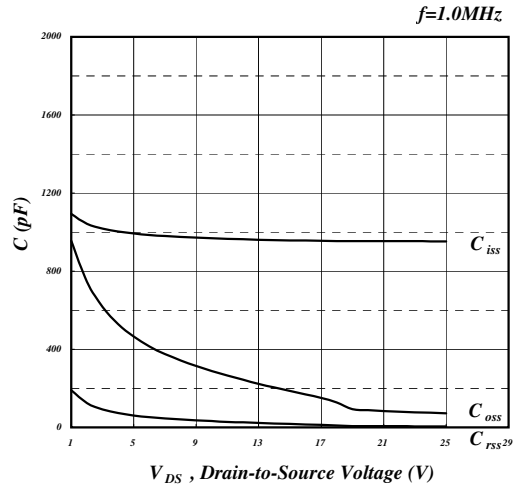


Fig 8. Typical Capacitance Characteristics

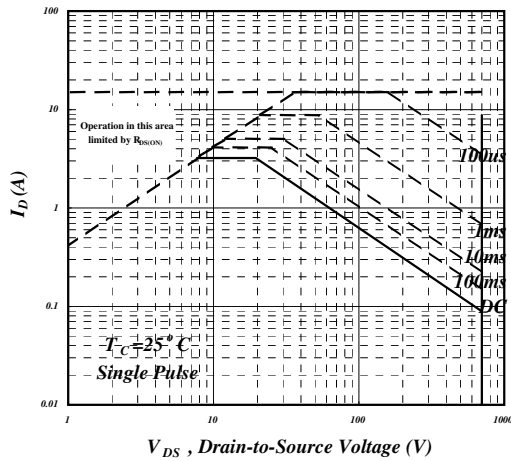


Fig 9. Maximum Safe Operating Area

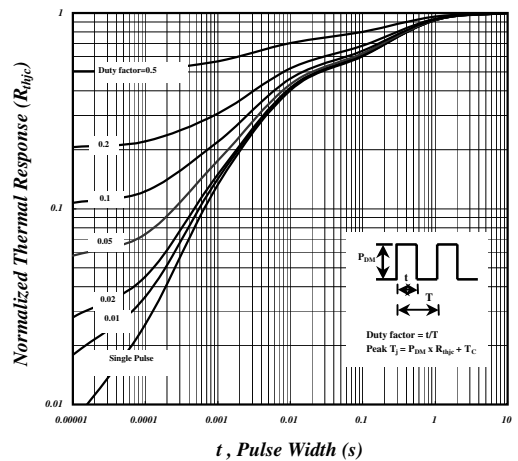


Fig 10. Effective Transient Thermal Impedance

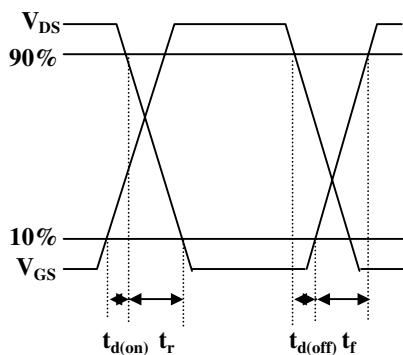


Fig 11. Switching Time Waveforms

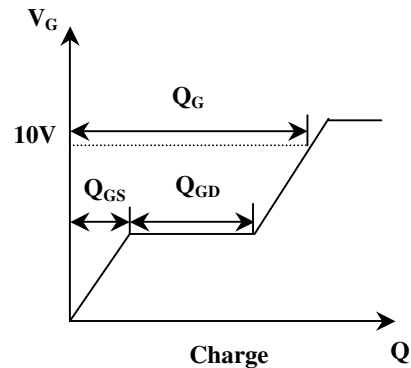
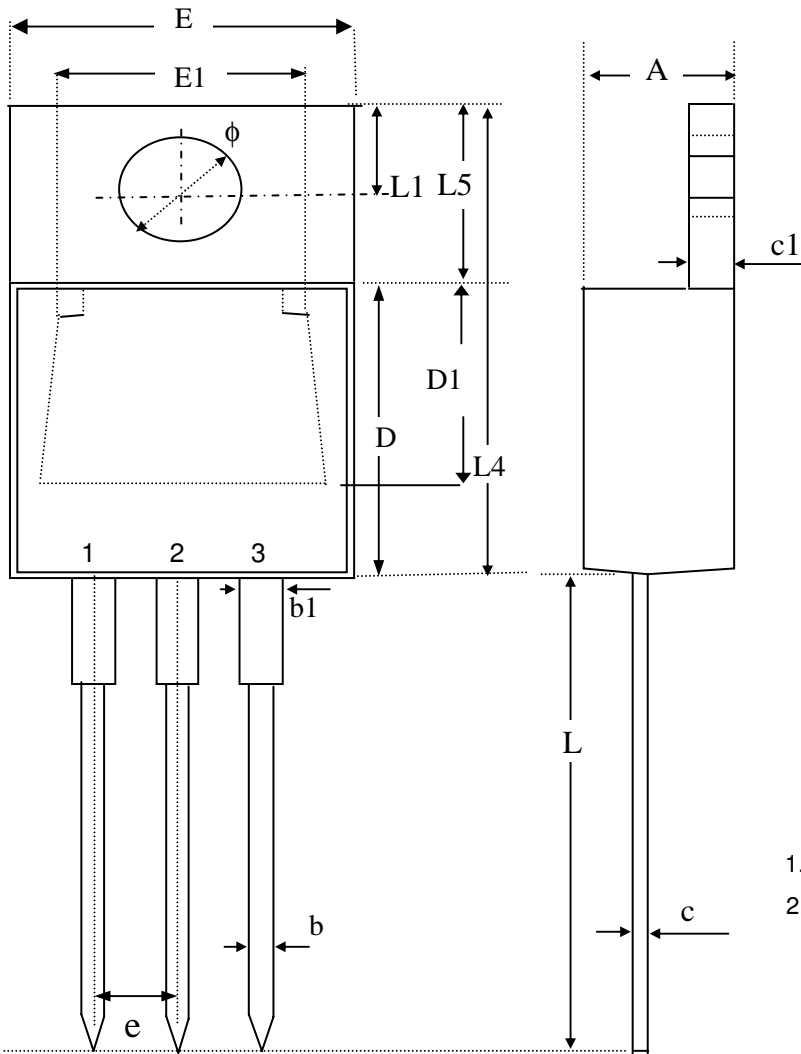


Fig 12. Gate Charge Waveform



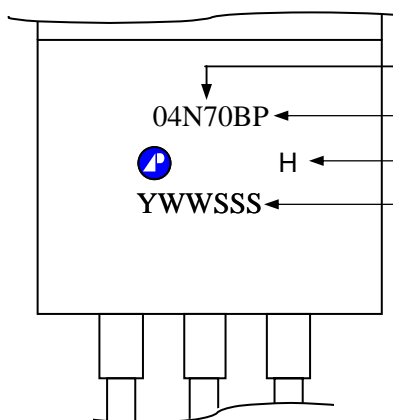
Package Dimensions: TO-220



SYMBOLS	Millimeters		
	MIN	NOM	MAX
A	4.40	4.60	4.80
b	0.76	0.88	1.00
D	8.60	8.80	9.00
c	0.36	0.43	0.50
E	9.80	10.10	10.40
L4	14.70	15.00	15.30
L5	6.20	6.40	6.60
D1	5.10 REF.		
c1	1.25	1.35	1.45
b1	1.17	1.32	1.47
L	13.25	13.75	14.25
e	2.54 REF.		
L1	2.60	2.75	2.89
ϕ	3.71	3.84	3.96
E1	7.4 REF.		

1. All dimensions are in millimeters.
2. Dimensions do not include mold protrusions.

Marking Information:



Product: AP04N70B

04N70BP



YWWSSS

H

Package code: P = RoHS-compliant halogen-free TO-220

Voltage grade H = 700V

Date Code (YWWSSS)

Y : Last digit of the year

WW : Work week

SSS : Lot code sequence