



## VRLA Rechargeable Battery

# BPL170-6 (BPL170-6FR)



### FEATURES

- Maintenance free(no water topping-up required).
- No free acid(Non-spillable battery).
- Low self-discharge rate, lower than 3% capacity loss per month.
- Can be used in any orientation(excluding used inverted).
- Filtered with explosion proof filter.
- Flame-arrestor is installed to ensure safety.
- Absorbent Glass Mat technology for efficient gas recombination.

### APPLICATION

- UPS
- Telecom



### SPECIFICATIONS

|                             |   |
|-----------------------------|---|
| Nominal Voltage             | 6 V   |
| Nominal Capacity            | 170.0Ah @ 20 hour rate F.V.(1.75V/cell)   |
| Approx. Weight              | 29.2Kg(64.4lbs.)  |
| Terminals                   | B9 (Fitting M8 bolt & nut) I3 is optional   |
| Internal Resistance         | ≤2.5mΩ (Fully Charged)  |
| Max. Discharge Current      | 800 A (5 sec.)  |
| Max. Charge Current         | 51 A  |
| Operating Temperature Range | Charge : 0°C~40°C(32°F~104°F)<br>Discharge : -20°C~50°C(-4°F~122°F)<br>Storage : -20°C~40°C(-4°F~104°F) |
| Container Material          | ABS(UL94-HB, UL94-V0 is optional)   |

ISO 9001



ISO14001



UL



MH19884

CE



CAM20310-2474-E-16

- IEC 60896-21/22
- JIS C 8704-2
- GB/T 19638.2

### DIMENSION(mm/inch)

### OUTER DIMENSIONS

### TERMINAL TYPE

#### Length

260±2.0 (10.24±0.08)

#### Width

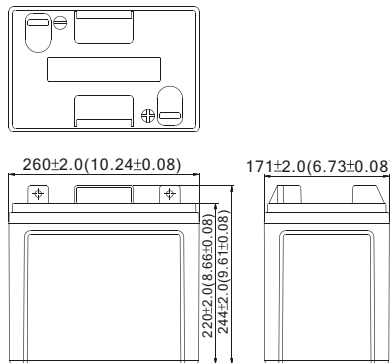
171±2.0 (6.73±0.08)

#### Container Height

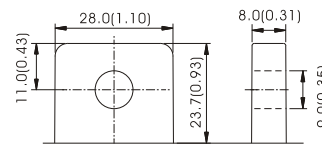
220±2.0 (8.66±0.08)

#### Total Height

244±2.0 (9.61±0.08)

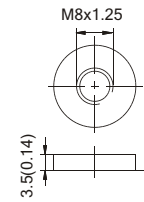


#### Terminal B9



[M8 BOLT & NUT]

#### Terminal I3



[M8 BOLT]

Terminal Hardware Initial Torque: B9/I3(10.0Nm±5%)

### Constant power discharge characteristics at 25 °C/77 °F

Unit: W

| F.V. (V/cell) \ Discharge Time | 15 Min | 30 Min | 1 Hr  | 3 Hr  | 5 Hr  | 10 Hr | 20 Hr |
|--------------------------------|--------|--------|-------|-------|-------|-------|-------|
| 1.80V                          | 1636   | 1100   | 618.7 | 247.7 | 170.9 | 95.4  | 50.36 |
| 1.75V                          | 1711   | 1142   | 637.1 | 252.7 | 173.4 | 96.9  | 51.00 |
| 1.70V                          | 1764   | 1168   | 648.7 | 255.0 | 174.4 | 97.4  | 51.26 |
| 1.65V                          | 1805   | 1184   | 656.4 | 256.8 | 175.0 | 97.6  | 51.38 |
| 1.60V                          | 1841   | 1196   | 663.0 | 258.3 | 175.5 | 97.6  | 51.38 |

### Constant current discharge characteristics at 25 °C/77 °F

Unit: A

| F.V. (V/cell) \ Discharge Time | 15 Min | 30 Min | 1 Hr  | 3 Hr  | 5 Hr  | 10 Hr | 20 Hr |
|--------------------------------|--------|--------|-------|-------|-------|-------|-------|
| 1.80V                          | 284.5  | 186.4  | 104.0 | 41.28 | 28.48 | 15.91 | 8.39  |
| 1.75V                          | 297.6  | 193.5  | 107.1 | 42.12 | 28.90 | 16.15 | 8.50  |
| 1.70V                          | 306.8  | 198.0  | 109.0 | 42.50 | 29.06 | 16.23 | 8.54  |
| 1.65V                          | 313.9  | 200.7  | 110.3 | 42.80 | 29.16 | 16.27 | 8.56  |
| 1.60V                          | 320.1  | 202.8  | 111.4 | 43.05 | 29.24 | 16.27 | 8.56  |

All data shall be changed without prior notice, BB reserves the right to explain and update the information contained hereinto.