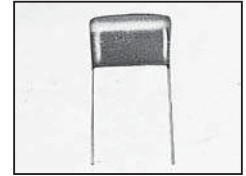


EPOXY COATED, NON-INDUCTIVE, CAPACITORS,  
REDUCED SIZE, RADIAL LEAD

### FEATURES

- NON-INDUCTIVE CONSTRUCTION
- EPOXY RESIN COATED FOR EXCELLENT MOISTURE RESISTANCE
- METALLIZED CONSTRUCTION PROVIDE SELF HEALING CHARACTERISTICS
- HIGH STABILITY WITH FREQUENCY OVER AN EXTENDED OPERATING LIFE
- HIGH PERFORMANCE AT LOW COST
- REDUCED SIZE
- LEAD FORMING AND CUT LEADS AVAILABLE



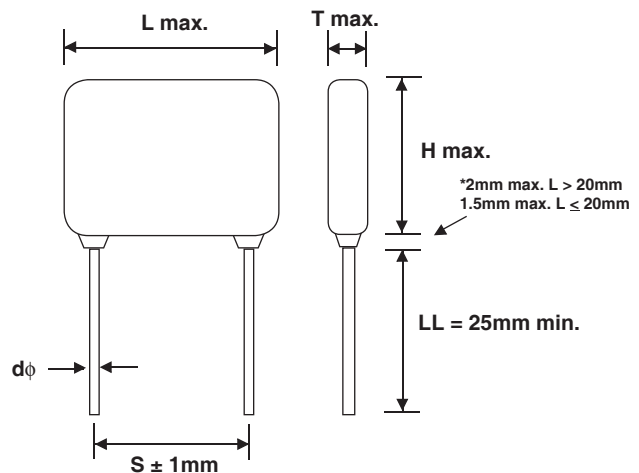
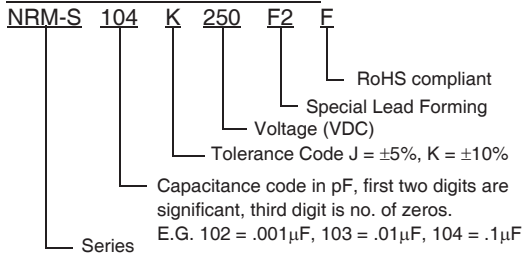
**RoHS  
Compliant**  
includes all homogeneous materials

\*See Part Number System for Details

### SPECIFICATIONS

Operating Temperature	-40°C ~ +85°C
Rated Voltage (VDC)	100V, 250V, 400V, 630V
Capacitance Range	0.01μF ~ 10μF
Capacitance Tolerance	±10% (K), ±5% (J)
Insulation Resistance	C < 0.33μF IR ≥ 9,000 Megohm C ≥ .33μF IR ≥ 3,000 Megohm/μF
Dissipation Factor	1% (at 1KHz/25°C)
Dielectric Strength	150% of Rated Voltage for 5 Seconds

### PART NUMBER SYSTEM



### LEAD SPACING (BULK) AND DIAMETER (mm)

L	13.0	18.0	26.0	31.0
S	10.0	15.0	22.5	27.5
dφ	0.6	0.8	0.8	0.8

SEE TAPING SPECIFICATION FOR PARTS ON TAPE

### STANDARD PRODUCTS AND CASE SIZE TABLE (mm)

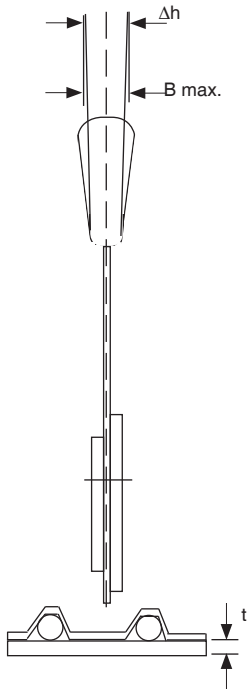
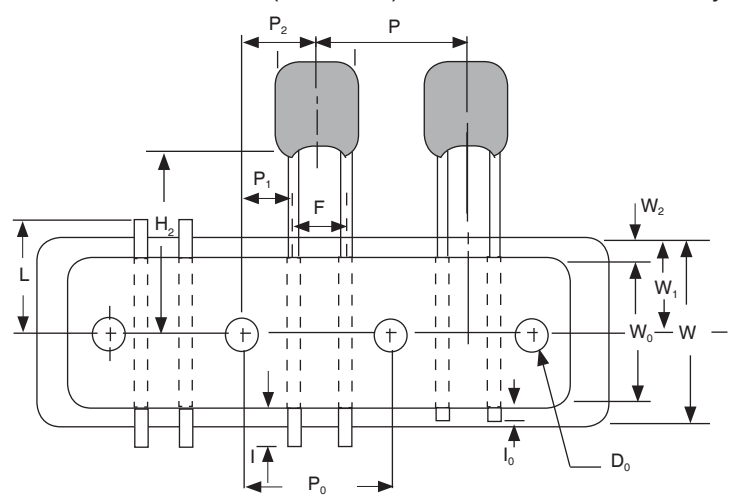
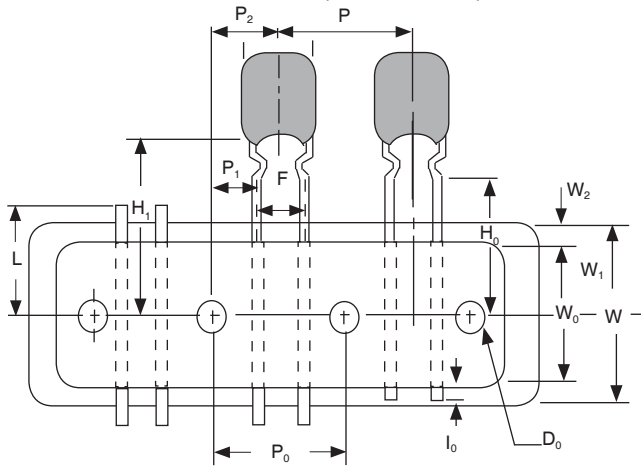
Cap. (μF)	100VDC/63VAC			250VDC/160VAC			400VDC/200VAC			630VDC/220VAC		
	L	T	H	L	T	H	L	T	H	L	T	H
0.01	-	-	-	-	-	-	-	-	-	12.5	5.0	8.5
0.015	-	-	-	-	-	-	-	-	-	12.5	5.5	8.5
0.022	-	-	-	-	-	-	-	-	-	12.5	5.5	10.5
0.033	-	-	-	-	-	-	-	-	-	12.5	6.5	11.0
0.047	-	-	-	-	-	-	12.5	5.5	8.5	12.5	7.5	12.0
0.068	-	-	-	-	-	-	12.5	6.0	10.0	18.5	6.5	11.5
0.1	-	-	-	-	-	-	12.5	7.0	11.0	18.5	7.0	13.5
0.15	-	-	-	-	-	-	18.5	5.5	12.0	18.5	8.0	16.0
0.22	-	-	-	12.5	8.5	10.5	18.5	6.5	13.0	18.5	9.5	17.5
0.33	-	-	-	12.5	7.0	12.0	18.5	7.5	14.0	26.0	8.5	18.0
0.47	-	-	-	18.5	6.0	12.5	18.5	8.5	16.5	26.0	10.5	19.0
0.68	12.5	6.5	10.5	18.5	7.0	13.5	26.0	7.5	17.0	26.0	12.0	22.0
1.0	12.5	7.0	12.0	18.5	8.0	16.0	26.0	8.5	18.5	31.0	13.5	22.0
1.5	18.5	8.5	13.0	18.5	9.5	17.5	31.0	9.5	19.0	31.0	18.5	25.0
2.2	18.5	7.5	15.5	26.0	9.0	17.5	31.0	11.5	21.5	31.0	20.0	29.0
3.3	18.5	9.0	16.5	26.0	11.0	19.5	-	-	-	-	-	-
4.7	26.0	8.0	16.5	26.0	12.5	22.5	-	-	-	-	-	-
6.8	26.0	9.5	17.5	31.0	14.0	22.5	-	-	-	-	-	-
10.0	26.0	11.0	21.0	31.0	16.0	28.5	-	-	-	-	-	-



TAPE & REEL FOR RADIAL LEAD CAPACITOR  
REFER TO EIA STANDARD RS-468

### CRIMPED LEAD TAPING (STANDARD)

### STRAIGHT LEAD TAPING (SPECIAL) Contact NIC for Availability\*



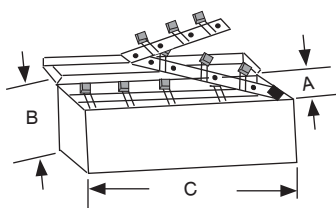
**\*NOTE:** STANDARD LEAD SPACING ON TAPED PARTS IS 5MM. SPECIAL 7.5MM, 10MM AND 15MM LEAD SPACING MAY BE AVAILABLE UPON SPECIAL REQUEST.

TO SPECIFIC:

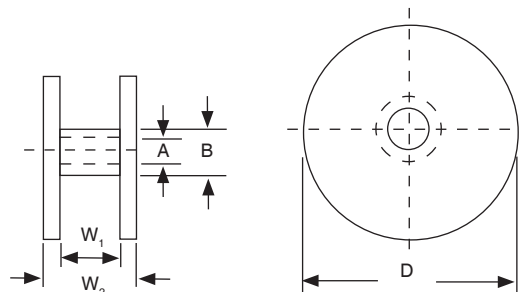
LEAD SPACING	P/N SUFFIX
5MM	TR
7.5MM	TR (7.5MMLS)
10MM	TR (10MMLS)

Dimensions MM (inch)		
$P$	$12.7 \pm 1.0$	$(0.5 \pm 0.0394)$
$P_0$	$12.7 \pm 0.2$	$(0.5 \pm 0.008)$
$P_2$	$6.35 \pm 1.3$	$(.025 \pm 0.051)$
$P_1$	$3.85 \pm 0.5$	$(0.152 \pm 0.020)$
$F^*$	$5.0 \pm 0.8$	$(0.197 \pm 0.0315)$
$\Delta h$	$0 \pm 2.0$	$(0 \pm 0.0787)$
$W$	$18.0 \pm 0.5$	$(0.709 \pm 0.020)$
$W_1$	$9.0 \pm 0.5$	$(0.354 \pm 0.020)$
$H_1$	$20.0 \pm 0.75$	$(0.787 \pm 0.030)$
$H_2$	$18.0 \pm 0.5$	$(0.709 \pm 0.020)$
$H_0$	$16.0 \pm 0.5$	$(0.630 \pm 0.020)$
$l$	$2.0 \text{ max.}$	$(0.079 \text{ max.})$
$l_0$	$7.0 \text{ max.}$	$(0.276 \text{ max.})$
$\phi D_0$	$4.0 \pm 0.2$	$(0.157 \pm 0.008)$
$W_0$	$12.5 \text{ min.}$	$(0.492 \text{ min.})$
$t$	$0.7 \pm 0.2$	$(0.028 \pm 0.008)$
$W_2$	$3.0 \text{ max.}$	$(0.118 \text{ max.})$
$L$	$11.0 \text{ max.}$	$(0.433 \text{ max.})$

### AMMO BOX PACKING TB (TAPE BOX)



### REEL PACKING TR (TAPE/REEL)



A - 15mm  
B - 80mm  
D - 370mm

$W_1$  - 45mm  
 $W_2$  - 55mm

