

Surface Mount Clock Oscillator

- *Tristate capable*
- *1.7 mm height*
- *50 pf load compatible*

Series **CC065H**



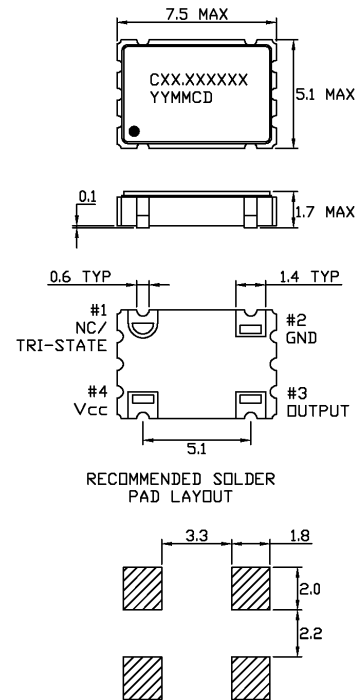
Part Numbering Example: CC065H Z - A2 B2 45 - 33.333 TS

CC065H	Z	A2	B2	45	33.333	TS
SERIES	ADDED FEATURES	OPERATING TEMP.	STABILITY	SYMMETRY	FREQUENCY	TRI STATE
CC065H	BLANK = BULK PACK Z = TAPE AND REEL	Blank = 0°C ~+70°C A2 = -40°C ~+85°C	Blank = ±100 ppm B2 = ± 50 ppm	Blank = 40/60% 45 = 45/55%		Tri State Standard

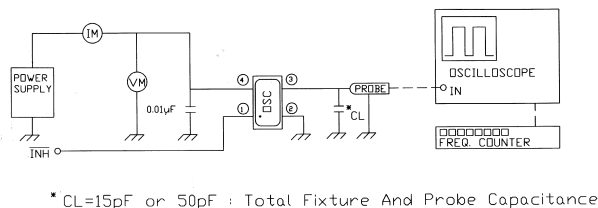
Specifications:

Frequency Range:	1.8432 MHz to 80.000 MHz
Available Stability Options:	±100 ppm <i>Standard</i> ±50 ppm
Output Series:	LSTTL / HCMOS
Input Voltage:	+5.0 VDC ±10%
Operating Temperature Range Options:	-10°C to +70°C <i>Standard</i> -40°C to +85°C
Output Voltage:	V _{OL} = 0.5 V Max. V _{OH} = 4.5 V Min.
Output Load:	10 TTL, 50 pf CMOS
Maximum Input Current:	27 mA (1.8432 to 31.999 MHz) 45 mA (32.000 to 49.999 MHz) 75 mA (50.000 to 80.000 MHz)
Maximum Rise/Fall Time:	7 ns
Duty Cycle:	40/60% <i>Standard</i> 45/55%
Max. Start-Up Time:	10 ms
Tristate Input:	+0.80 VDC Max. to Disable +3.60 VDC Min. to Enable or open to Enable
Storage Temperature:	-55°C to +125°C
Packaging:	Tape and Reel (1K per Reel)

CC065H



TEST CIRCUIT



OUTPUT WAVE FORM

