

Surface Mount UM-1

Series **CM1J**

- *Smaller than C49J with the same characteristics*
- *SMD profile*
- *Grounded case better for EMI*



Part Numbering Example: CM1J - Z - A1 B2 C2 50 - 7.0 D18 - 3

CM1J	Z	A1*	B2	C2	50	7.0	D18	-3
SERIES	ADDED FEATURES	OPERATING TEMP.	STABILITY	TOLERANCE	RESISTANCE	FREQUENCY	LOAD CAP.	OVERTONE
CM1J	BLANK = BULK PACK Z = TAPE AND REEL	A0 = -10°C ~ +60°C A1 = -10°C ~ +70°C A2 = -40°C ~ +85°C A3 = -55°C ~ +125°C	B1 = ±100 B2 = ± 50 B3 = ± 30 B4 = ± 10	C1 = ±100 C2 = ± 50 C3 = ± 30 C4 = ± 10	SEE CHART BELOW		D16,18,20,ETC. DS = SERIES	BLANK: FUND. -3: 3rd OT -5: 5th OT -7: 7th OT -BT: BT Cut

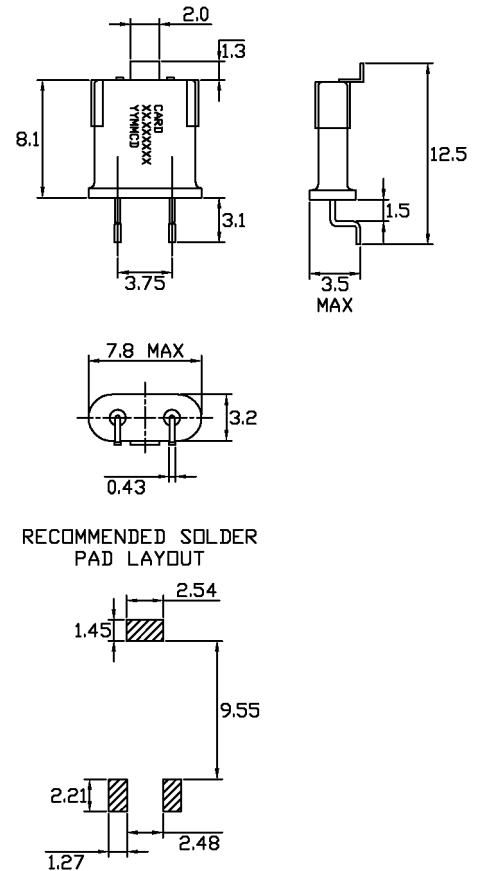
**NOTE: The above ABC combinations cover basic specification options. We tailor our crystal specifications to meet customer requirements. Please contact our sales department if you don't see exactly what you need.*

Specifications:

Frequency Range:	10.000 ~ 175.000 MHz
Operating Temperature:	-10°C ~ + 70°C <i>Standard</i> -40°C ~ + 85°C -55°C ~ +125°C
Frequency Stability:	± 100 ppm ± 50 ppm <i>Standard</i> ± 30 ppm ± 10 ppm
Frequency Tolerance: (at 25°C)	± 100 ppm ± 50 ppm <i>Standard</i> ± 30 ppm ± 10 ppm
Load Capacitance:	Standard 18 pF or series. Please specify your required load.
Resistance:	Maximum resistance corresponds to frequency. See below.
Standard:	Mode: Fundamental, 3rd, 5th, or 7th Overtone Shunt Capacitance: 7 pF Max Aging: ± 5 ppm/year Drive Level: 1.0 mW Max
Optional Features:	Tape and Reel (1K per Reel)

Note: Not all combinations of the above tolerances, stabilities, and temperature ranges are available. Consult the factory if your requirement is not standard.

CM1J



RECOMMENDED SOLDER PAD LAYOUT

Resistance Chart: All resistances are maximum values.

EQUIVALENT SERIES RESISTANCE (ESR), MODE OF OPERATION (MODE)		
Frequency MHz	Equivalent Series Resistance (Ω)	Oscillation Mode / Cut
7.000~15.999	50 Max	Fundamental
16.000~40.000	40 Max	Fundamental
30.000~90.000	70 Max	Third Overtone
70.000~175.000	100 Max	Fifth Overtone

