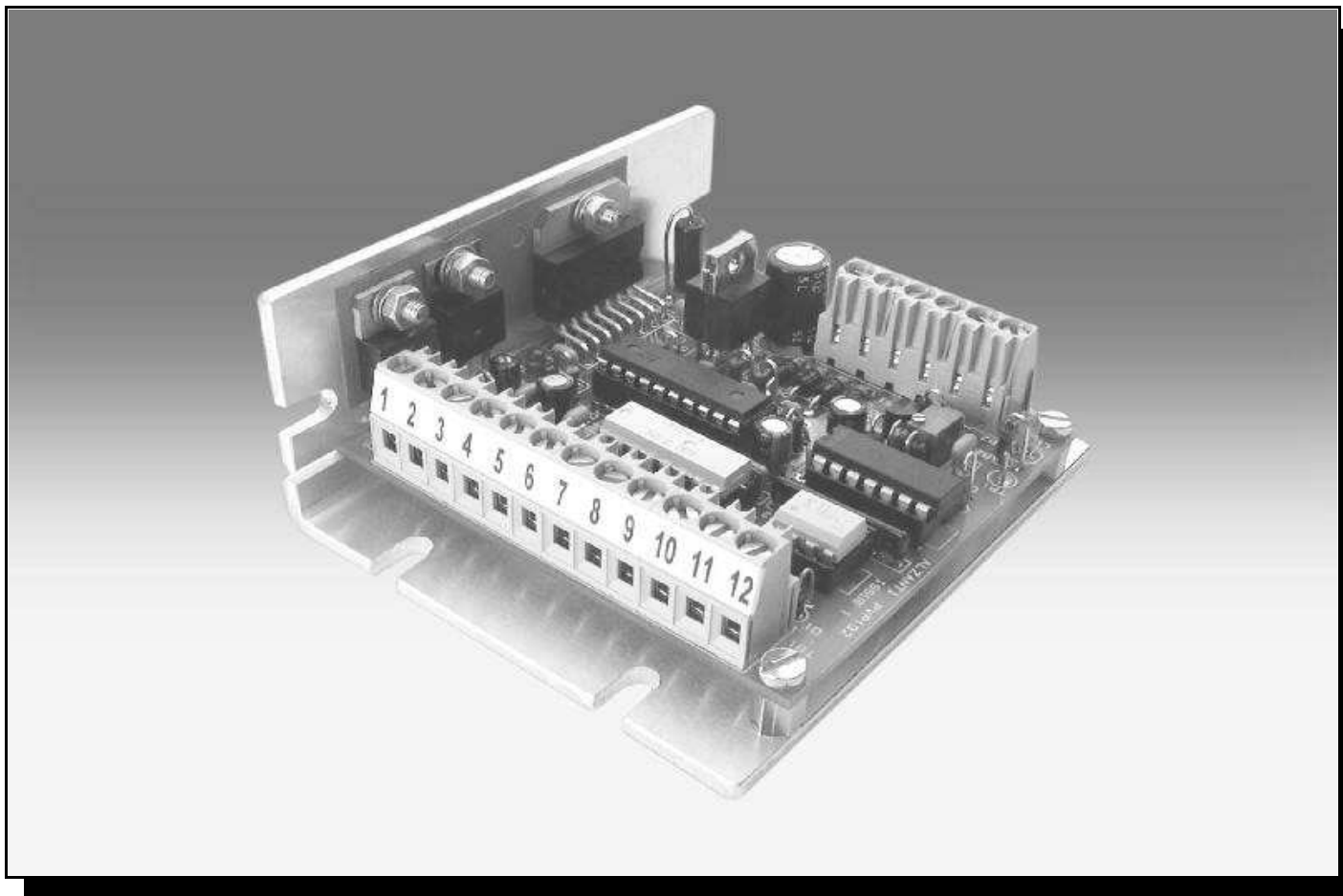

PVP192 2Amp BIPOLAR STEPPER DRIVE MODULE



The PVP192 Stepper Motor Drive Module, manufactured by Alzanti, has been developed to meet the growing demand for high performance, cost effective, bipolar drivers. It has been designed to be compatible with the specifications of many types of stepper motors with 4, 6 or 8 leads, and is suitable for numerous applications. PWM current regulation provides very efficient use of input power and extends the useful speed range of motors whilst reducing heat dissipation in the drive.

The **PVP192** delivers a maximum continuous motor current of 2 Amps per phase. Motor phase current is fully adjustable via an on-board potentiometer, this in turn allows a wide range of motors up to NEMA frame size 23 to be driven, at voltages up to 36Vdc.

All control signal inputs have uncommitted opto isolators which means that sinking (NPN) or sourcing (PNP) drivers can be used, thereby making interface possible to a wide range of PLC's and other control equipment. The module is supplied, as standard, with the opto isolators configured for 5 Volt operation, 12 Volt or 24 Volt options can be provided on request.

Other standard features include: Full/half step mode selection; over temperature protection; standby motor current selection; output stage disable function.

Ordering codes:

PVP192-5	+5V opto input configuration
PVP192-12	+12V opto input configuration
PVP192-24	+24V opto input configuration

ALZANTI®
THE DRIVING FORCE IN MOTION CONTROL

Mclennan Servo Supplies

Unit 1, The Royston Centre, Lynchford Lane,
Ash Vale, Surrey. UK GU12 5PQ
Tel: +44 (0) 8707 700 700
Fax: +44 (0) 8707 700 699
Email: sales@mclennan.co.uk
Website: <http://www.alzanti.com>

SPECIFICATION

PVP192

Motor Supply Voltage:	12 to 36Vdc (maximum) smoothed, unregulated
Motor Output Current:	0.05 to 2 Amps
Logic Supply Voltage:	12 to 36Vdc (maximum) smoothed, unregulated
Logic Supply Current:	90mA (typical)
Max. Step Pulse Frequency:	10kHz, 1:1 mark/space ratio, minimum pulse width 50µS
Control Signal Inputs:	Uncommitted opto isolated inputs for use with sinking (NPN) or sourcing (PNP) drivers. Nominal LED operating current 15mA set by on-board series resistors (see data sheet for details). Absolute maximum LED forward current 40mA. LED reverse bias protection diode fitted. Typical isolation voltage 2500Vrms
Temperature Ranges	
Storage:	-10 °C to +70 °C maximum (RH ≤60%, non condensing)
Operating:	0 °C to +40 °C ambient max. (RH ≤60%, non condensing)
Chassis:	+70 °C maximum. An external heatsink may need to be fitted depending on operating conditions.
Weight:	180g (typical)
Connectors:	PCB mounted terminal blocks, cable size 2.5mm ² max.
Printed Circuit Board:	Glass Fibre FR4 UL94V-0, 1.6mm, PTH, Resist and Ident

Dimensions in mm

6 slots 4.50 wide

