

# SURFBOARDS®



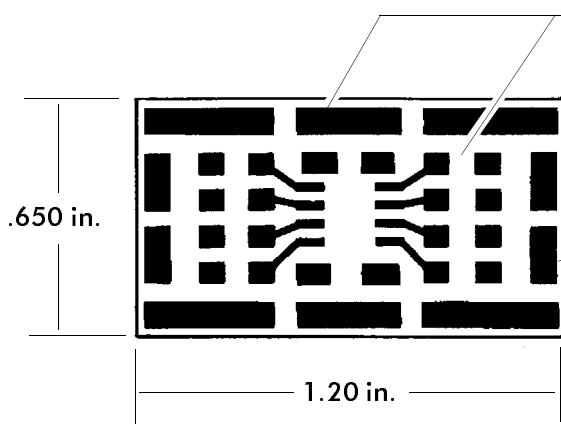
THE BREADBOARDING MEDIUM FOR SURFACE MOUNT™

## 9000 SERIES FOR I.C.s

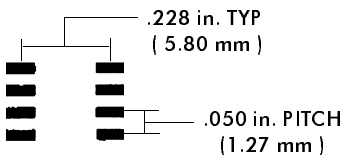
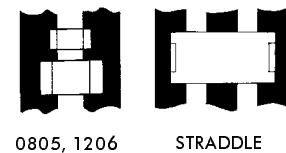
IDS9081A 3-9-99

# MODEL 9081 ACCEPTS 8-PIN S.O.I.C.

FOR GENERAL PURPOSE PROTOTYPE AND DEVELOPMENT



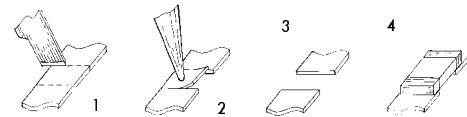
Pad sets accept 1206, Mini-Melf deices. Peripheral pads provide additional breadboarding area.



I.C. Footprint accepts industry standard S.O.I.C. packages

**FOIL MODIFICATIONS EXPAND VERSATILITY**  
Typical of many Surfboards are large pad areas which which may be modified to create additional part mounting zones or expand layout or connection options.

- 1: Score foil with sharp razor to define new zone.
- 2: Apply heat with iron to delaminate foil section.
- 3: New mounting zone has been created.
- 4: Solder component to new mounting zone.



OTHER SURFBOARD MODELS FOR USE WITH 8 - 14 - 16 PIN SOICs  
SEE

9082, 9161, 9162  
9163, 9164 and 9165

Use the model 9081 to build a variety of simple circuits or sub-assemblies based on the popular and widely available 8-PIN S.O.I.C. package. Peripheral pad and land areas accept 1206, mini-melf, and A-Tantalum packages. Modify board (see foil modifications) to add additional components or re-configure layout. Glue or attach assembly to ground plane or larger board for enhanced R.F. characteristics.

### BOARD SPECIFICATIONS

**BOARD MATERIAL:** .031 +/- .005 In. Thick G-10 FR-4 Glass Epoxy or equivalent.  
**CIRCUITS:** 1oz Copper with solder coated pads.  
**TOLERANCES:** Given in inches  
Board Size +/- .020 / OAL +/- .040  
Circuit pattern/position +/- .005

Copyright 1997 by Capital Advanced Technologies, Inc. All rights reserved. Surfboards are a registered trademark of Capital Advanced technologies, Inc. All other trademarks or registered trademarks are property of their respective owners. Availability, specifications, and prices are subject to change without notice. All information given is believed to be accurate but is not guaranteed. The user of information given or products represented by such information is responsible for determining the suitability of said information or products for a given purpose.

**CAPITAL ADVANCED TECHNOLOGIES, INC.**

CAROL STREAM, ILLINOIS, USA.

PHONE 630-690-1696 WWW.CapitalAdvanced.Com FAX-ON-DEMAND 630-690-2865