

4

3

2

1

D

D

C

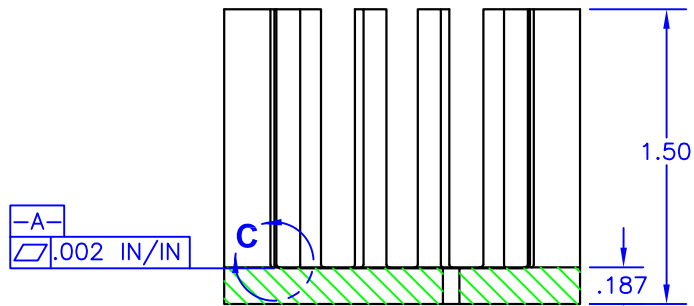
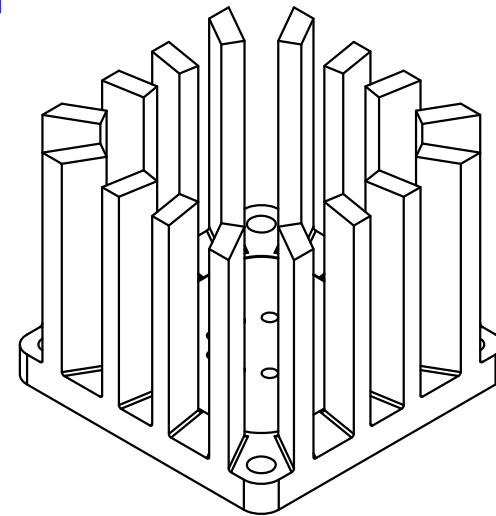
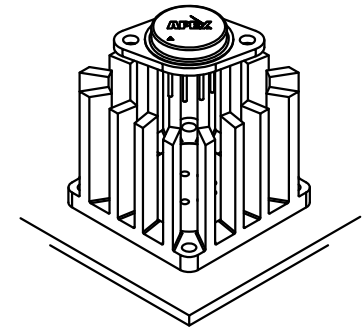
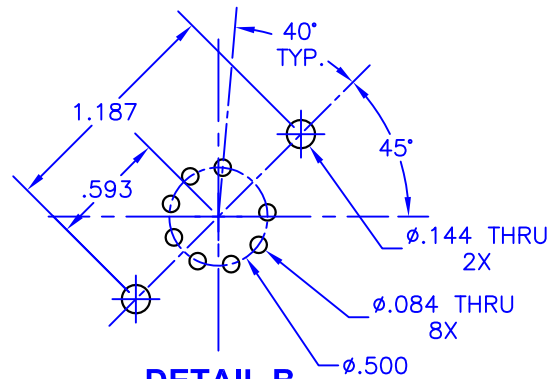
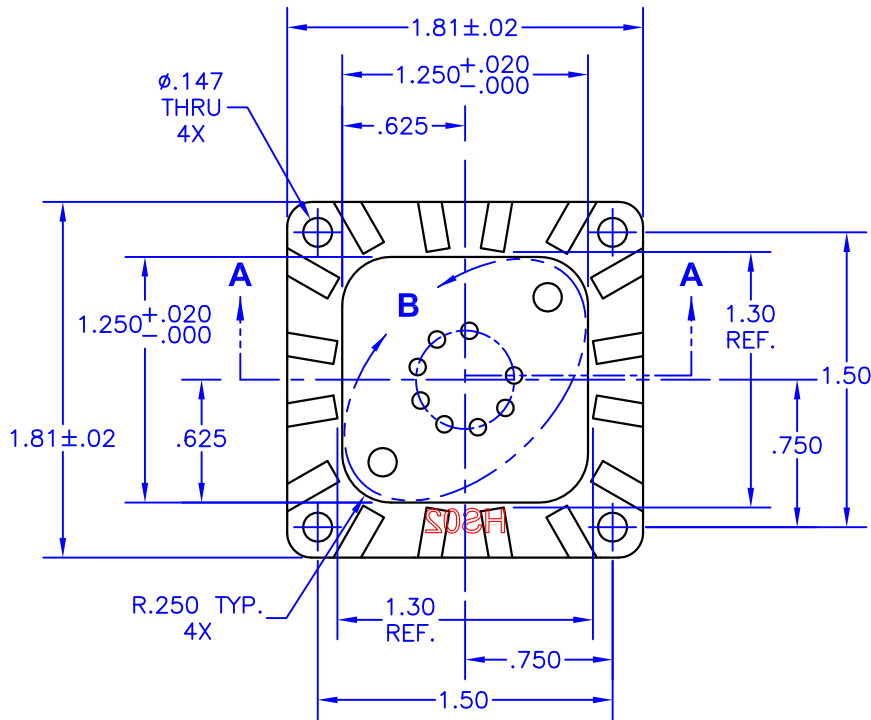
C

B

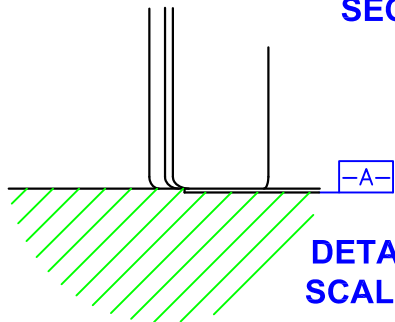
B

A

A



SECTION A-A



DETAIL C SCALE 4:1

NOTES:

1. Unless otherwise noted, all dimensions are in inches.
2. Break all sharp edges, de-burr & remove loose chips.
3. Material: Aluminum (M/F AAVID Thermalloy 5684 stamping blank)
4. Machine 1.25x1.25 area of surface -A- flat to within .002 in/in.
5. Finish: Anodize per MIL-A-8625, Type II, Class 2, Black
Typical breakdown voltage > 300V
6. Mark with contrasting ink as shown, if specified by P.O.
7. Approximate Weight: 1.9 oz [54g]

TOLERANCES - UNLESS OTHERWISE SPECIFIED
.XX = ±.05 [.002]
.XXX = ±.005 [.0002]
ANG. = ±2°



TITLE:	HEATSINK, TO-3			MODEL:	HS02		
SUBJECT:	MECHANICAL DRAWING			ENGINEER:	D-M	DRAWN BY:	P.ECK
DATE:	12434	SHEET:	1 OF 1	FILENAME:	HS02	REV:	K
DATE:	14NOV12						

4

3

2

1