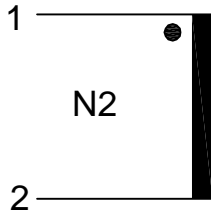




Part Number	CT 1060
Customer	
Product Type	Current transformer

SCHEMATIC:



ELECTRICAL SPECIFICATION:

- Rated input current : 60Amps
- Primary to Secondary isolation : 2500VAC
- Operating frequency : 50 / 60Hz
- Turns ratio : 1:1000
- DCR : 24Ω
- I_o @ V_{rms} = 7.41V : 1250μArms
- Ratio correction factor (RCF*) : 1.001 @10% (Multiply current reading by this factor to compensate for transformer losses)
- Operating temperature range : -55°C to 120°C
- Flammability rating : UL 94V0

Volt/Amp at rated I _p for different loads			
100Ω	500Ω	2000Ω	5000Ω
0.10	0.44	0.66	0.76

LOAD TEST DETAILS:

Rated I_p=60A
 R_L=100Ω/0.360W
 U_s=6.0V

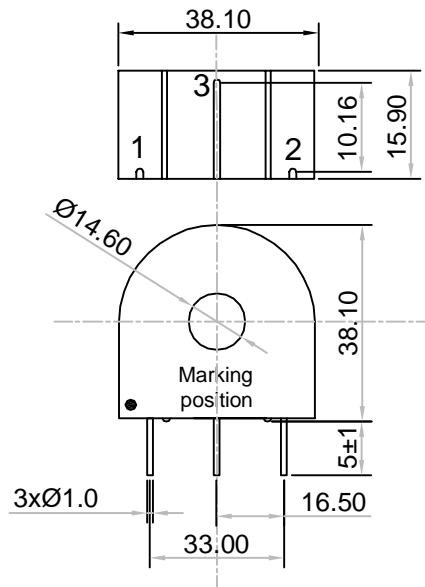
MARKING INFORMATION:

AMGIS
 YY/WW CT1060

Trafo Weight:

0.066Kg/pc

MECHANICAL DIMENSIONS:



All dimensions are in mm
 Linear dimensional tolerance ±0.2mm