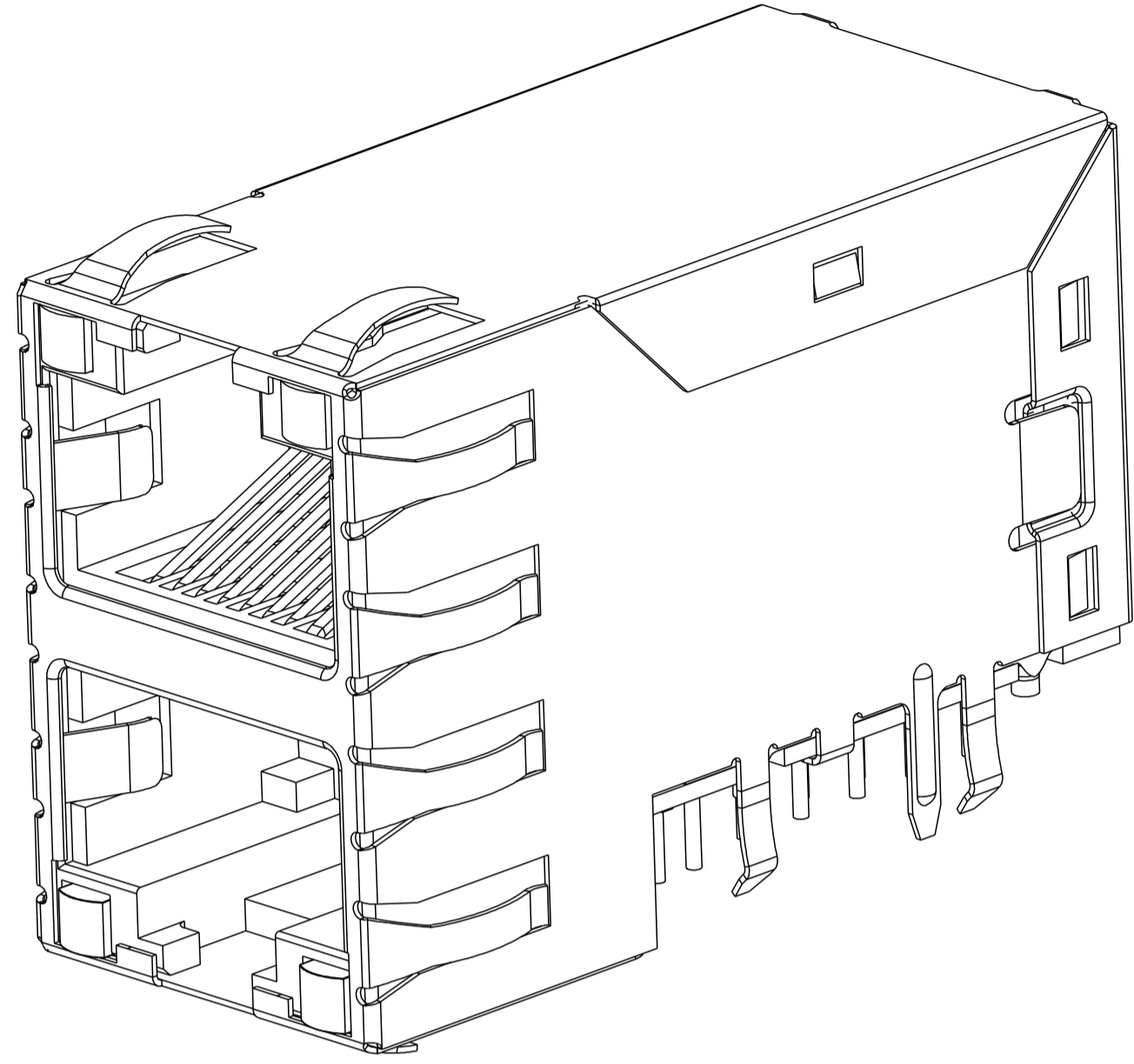
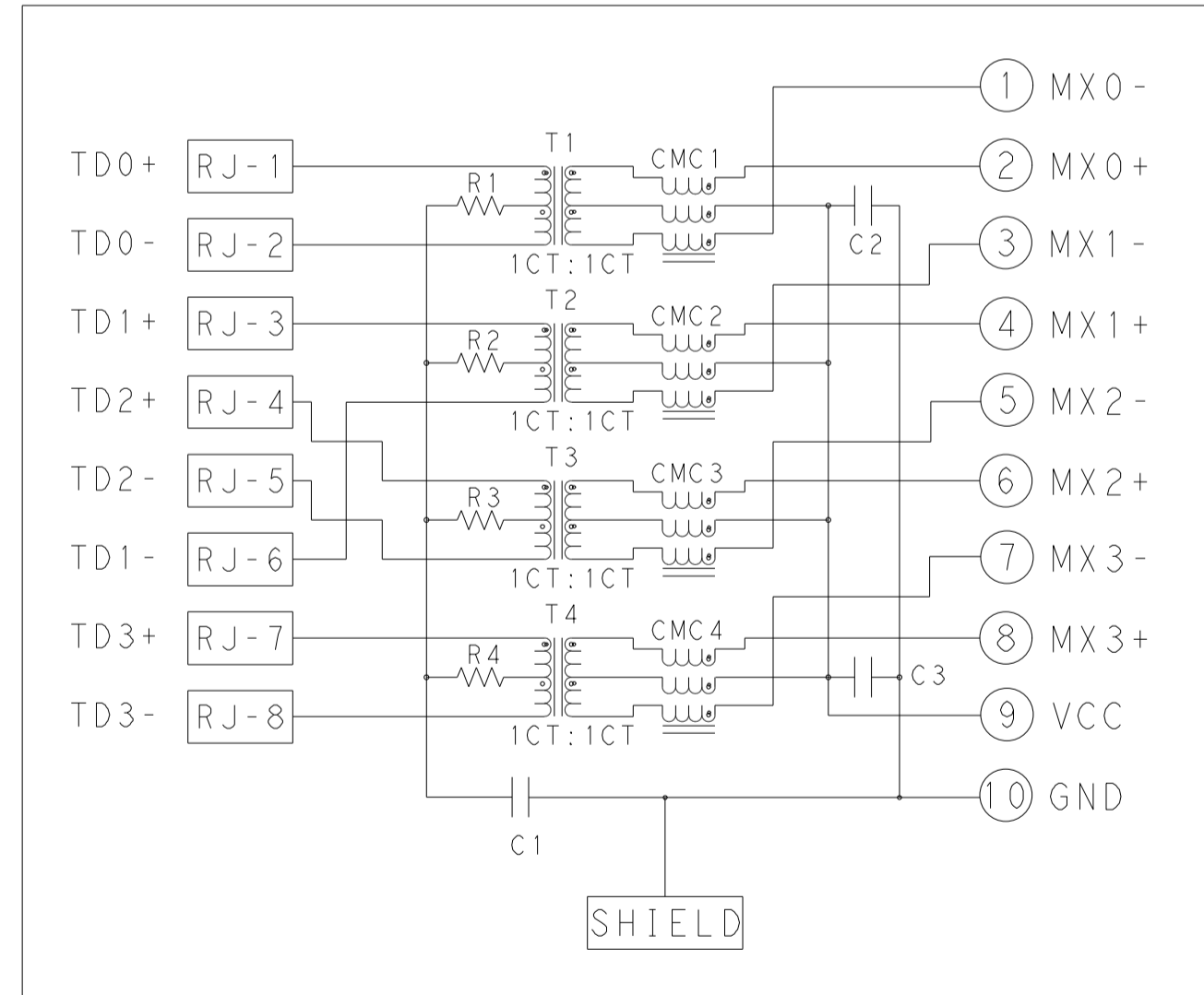


REVISIONS					
P	LTR	DESCRIPTION	DATE	DWN	APVD
C		LOGO CHANGE	17APR2013	RL	KZ

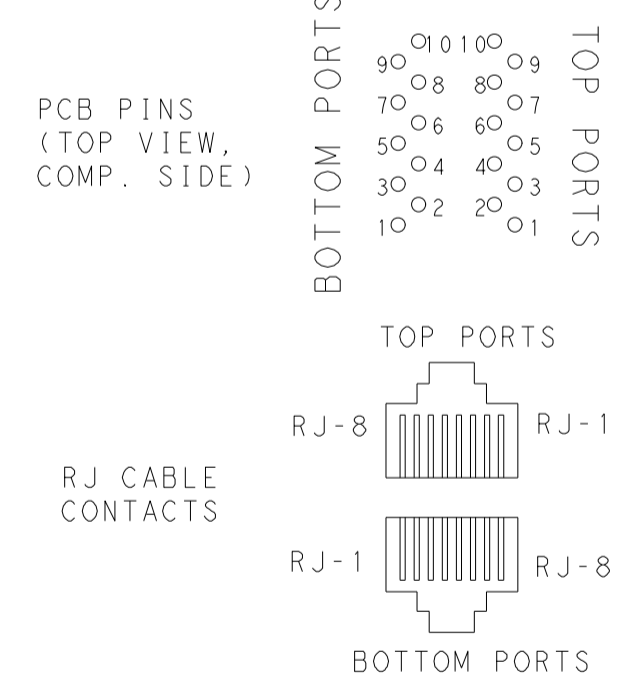


S8G56 GIGABIT CIRCUIT Δ Δ
 TOP AND BOTTOM PORTS



C1 = 1000pF, 2kV, CAPACITOR
 C2 - C3 = 10nF, 50V, CAPACITORS
 R1-R4 = 75 Ohms, 1/16 W, RESISTORS

PIN DESIGNATIONS
 (REPEAT FOR EACH VERTICAL PAIR OF PORTS))



1. MATERIALS:
- HOUSING: THERMOPLASTIC, BLACK, FLAMMABILITY RATING UL 94V-0.
 - SHIELD: BRASS, PREPLATED WITH 0.76um MIN SEMI-BRIGHT NICKEL, POST DIPPED WITH 2.54um MIN SAC SOLDER ON SOLDER TAILS.
 - CONTACTS: PHOSPHOR BRONZE, PLATED WITH 1.27um MIN OVERALL NICKEL UNDERPLATE, SELECTIVE 1.27um MIN GOLD AT MATING INTERFACE AND 2.54um MIN MATTE TIN ON SOLDER TAILS.
 - LED: DIFFUSED EPOXY LENS, CARBON STEEL LEAD FRAME LEADS, PREPLATED WITH 2.03um MIN SILVER OVER 1.02um MIN NICKEL OVER 1.02um MIN COPPER UNDERPLATE, POST PLATED WITH 2.54um MIN MATTE TIN AND/OR 2.54um MIN SAC SOLDER DIP OR PURE TIN SOLDER DIP.

- Δ MAGNETICS
- APPLICATION: 10/100/1000 BASE-T
 - IMPEDANCE: 100 Ohms
 - TURNS RATIO (CHIP:CABLE): 1:1 ALL FOUR PAIRS
 - OPEN CIRCUIT INDUCTANCE (OCL): 350uH MIN @100kHz, 0.1VRMS, 8mADC BIAS FROM 0 °C TO 70 °C, ALL FOUR PAIRS
 - ALL FOUR PAIRS BI-DIRECTIONAL
 - PERFORMANCE @ 25 °C:
 - INSERTION LOSS (IL): 1.1dB MAX FROM 0.5MHz TO 100MHz
 - RETURN LOSS (RL): 18dB MIN FROM 0.5MHz TO 40MHz
 - 12-20LOG(f/80)dB MIN FROM 40.1MHz TO 100MHz
 - CROSSTALK ATTENUATION: 35dB MIN FROM 0.5MHz TO 40MHz
 - 33-20LOG(f/50)dB MIN FROM 40.1MHz TO 100MHz
 - COMMON MODE REJECTION RATIO (CMRR):
 - 30dB MIN FROM 0.5MHz TO 100MHz
 - ISOLATION VOLTAGE: 2250VDC (MAX) FOR 60 SECONDS WITH A RISE TIME OF 500V/SEC AND WITH ALL PORTS CONNECTED.

Δ PART NUMBER, DATE CODE AND COUNTRY OF ORIGIN ARE LOCATED IN THE APPROXIMATE AREA SHOWN. DATE CODE: YY IS YEAR, WW IS WORK WEEK, D IS DAY OF WEEK, WITH SUNDAY=1.

Δ TRP CONNECTOR LOGO AND AGENCY APPROVAL LOGO ARE LOCATED IN THE APPROXIMATE AREA SHOWN.

Δ RJ45 CAVITIES CONFORM TO FCC RULES AND REGULATION PART 68 SUBPART F.

- Δ LEDs ARE DRIVEN WITH CONSTANT CURRENT AT APPROX. 20mA.
- DOMINANT WAVELENGTH (λ D)
- GREEN, 568nm TYP AT IF=20mA
 - YELLOW, 588nm TYP AT IF=20mA
 - ULTRA LOW WAVELENGTH GREEN (ULWG) 525nm AT IF =20mA
- FORWARD VOLTAGE(VF)
- GREEN, 2.2V TYP AT IF=20mA
 - YELLOW, 2.1V TYP AT IF=20mA
 - ULTRA LOW WAVELENGTH GREEN (ULWG) 2.8V AT IF =20mA

Δ INDICATED MAGNETIC CONNECTIONS ARE SYMMETRICAL AND SUPPORT AUTO-MDI/MDIX.

Δ DATUM AND BASIC DIMENSION ESTABLISHED BY CUSTOMER.

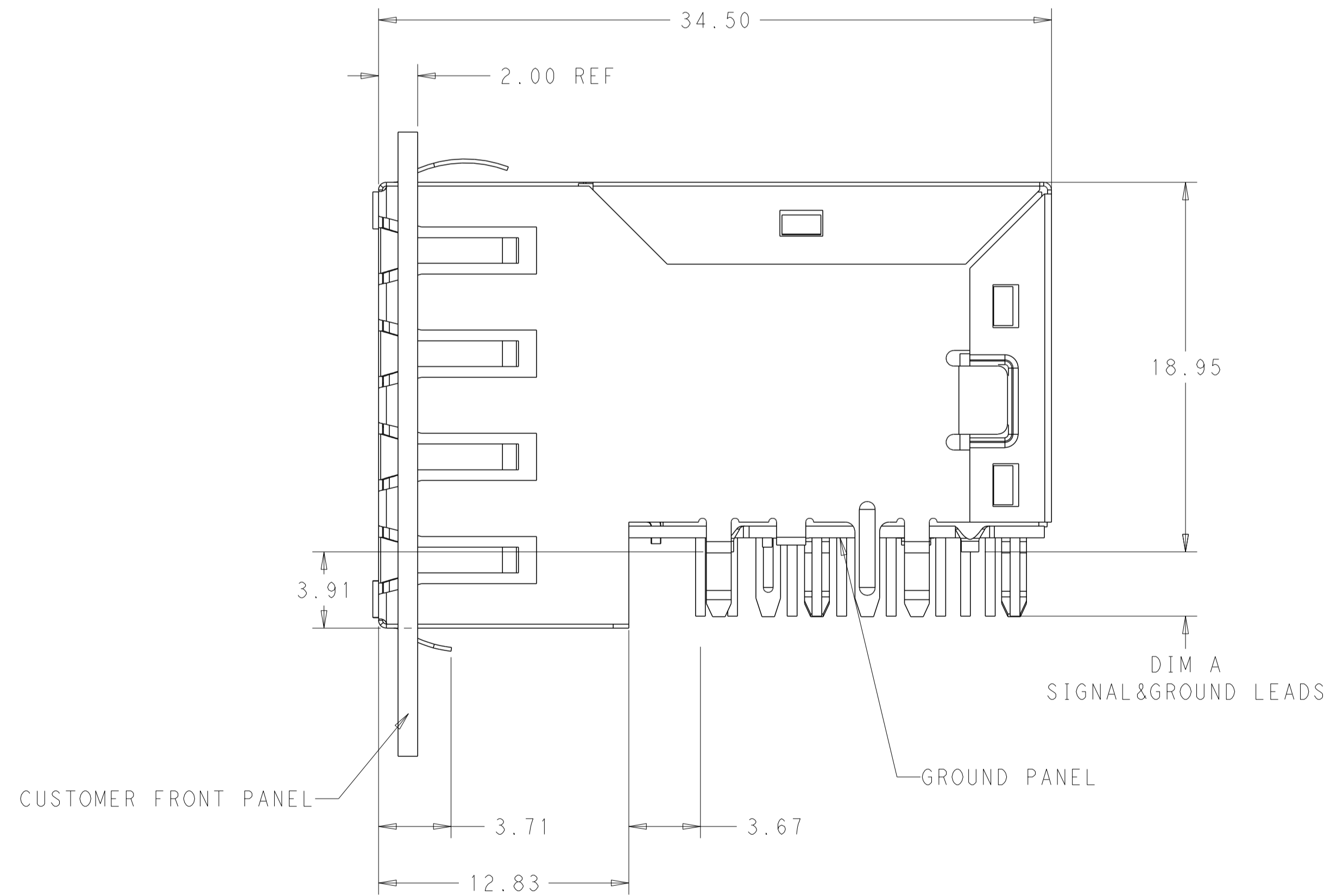
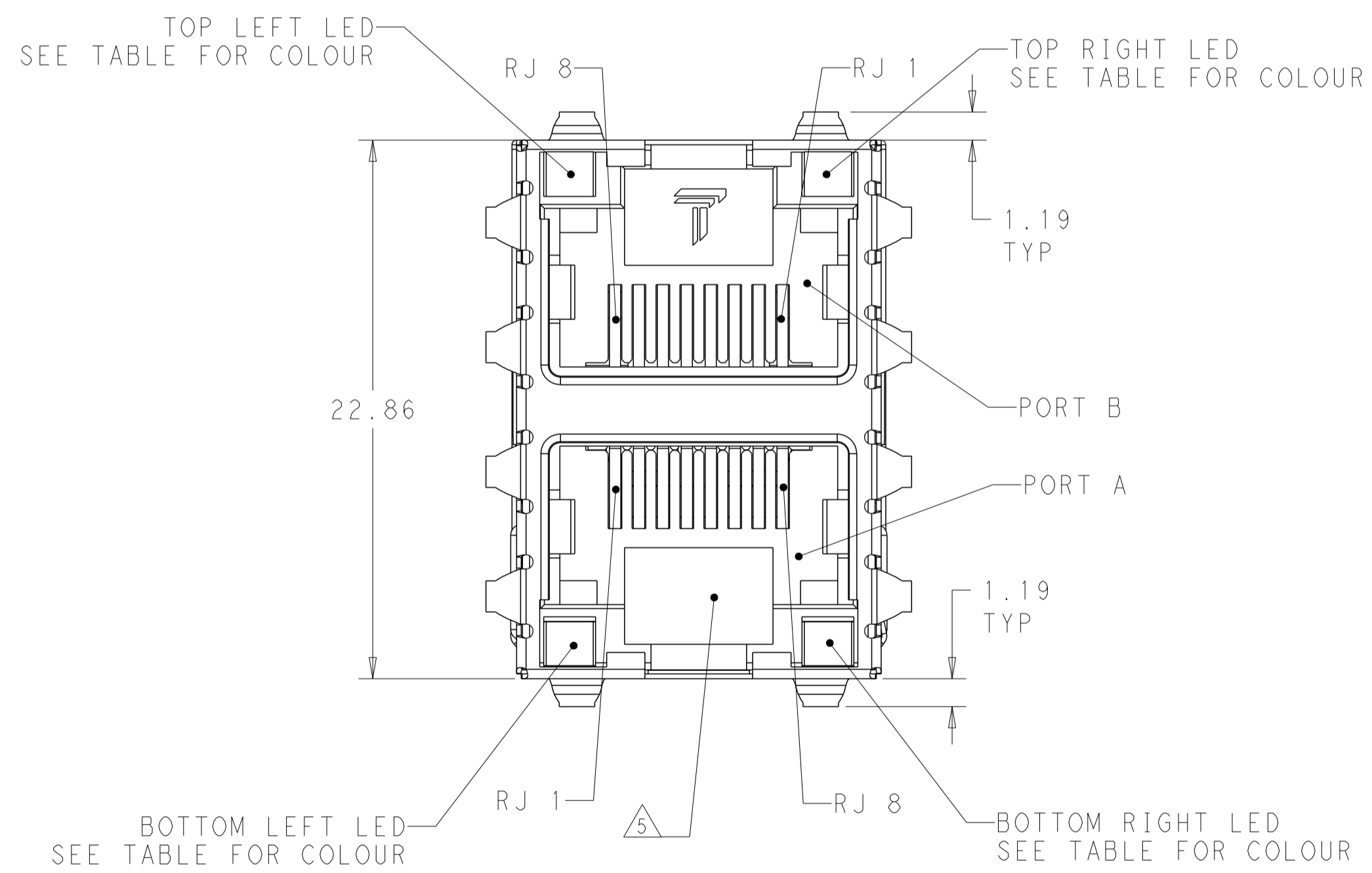
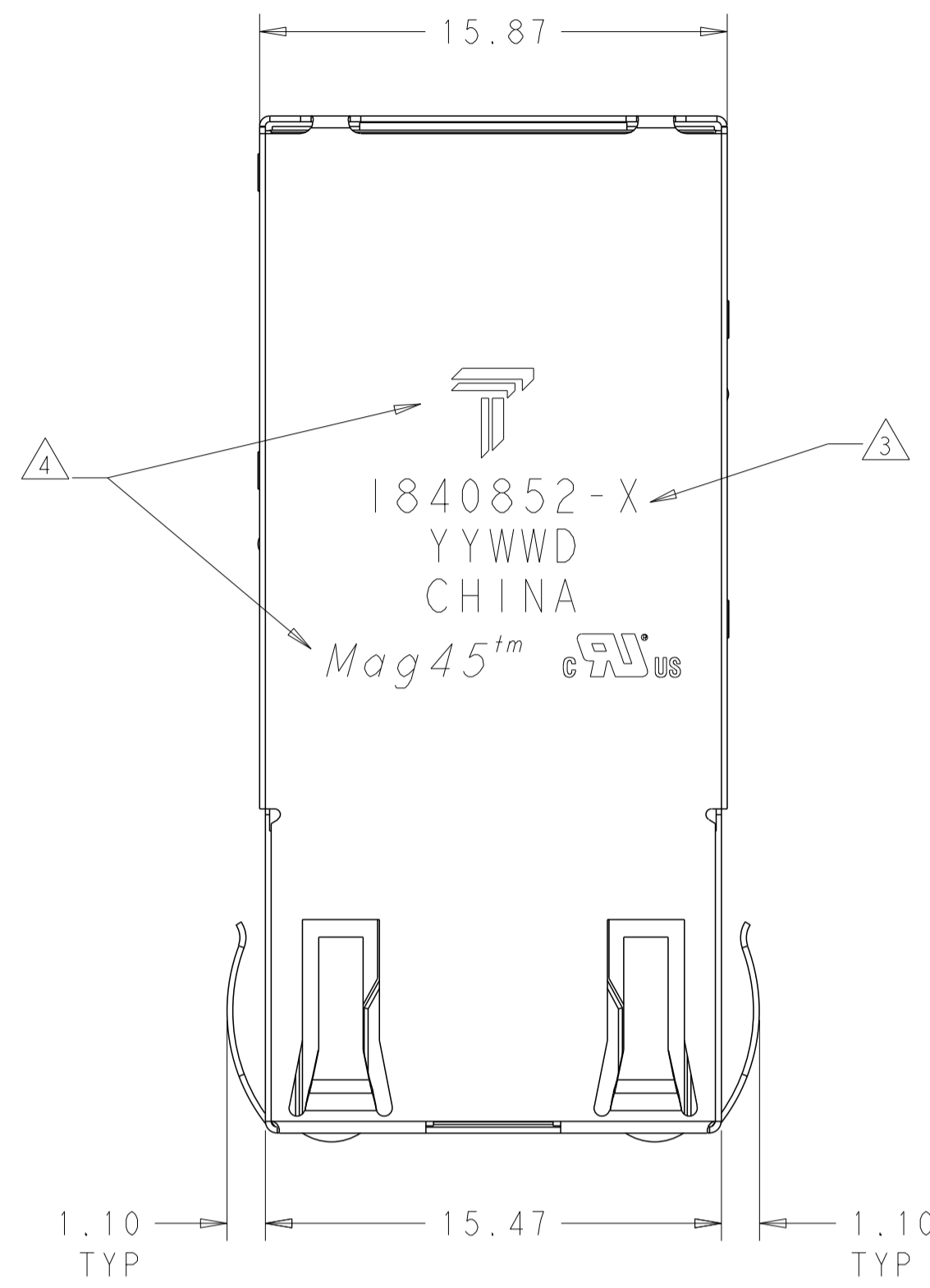
9. OPERATING TEMPERATURE: FROM 0 °C TO 70 °C

10. THE PARTS ARE RECOMMENDED FOR WAVE SOLDERING PROCESS, PEAK TEMPERATURE 260 °C MAX. 10 SECONDS MAX.

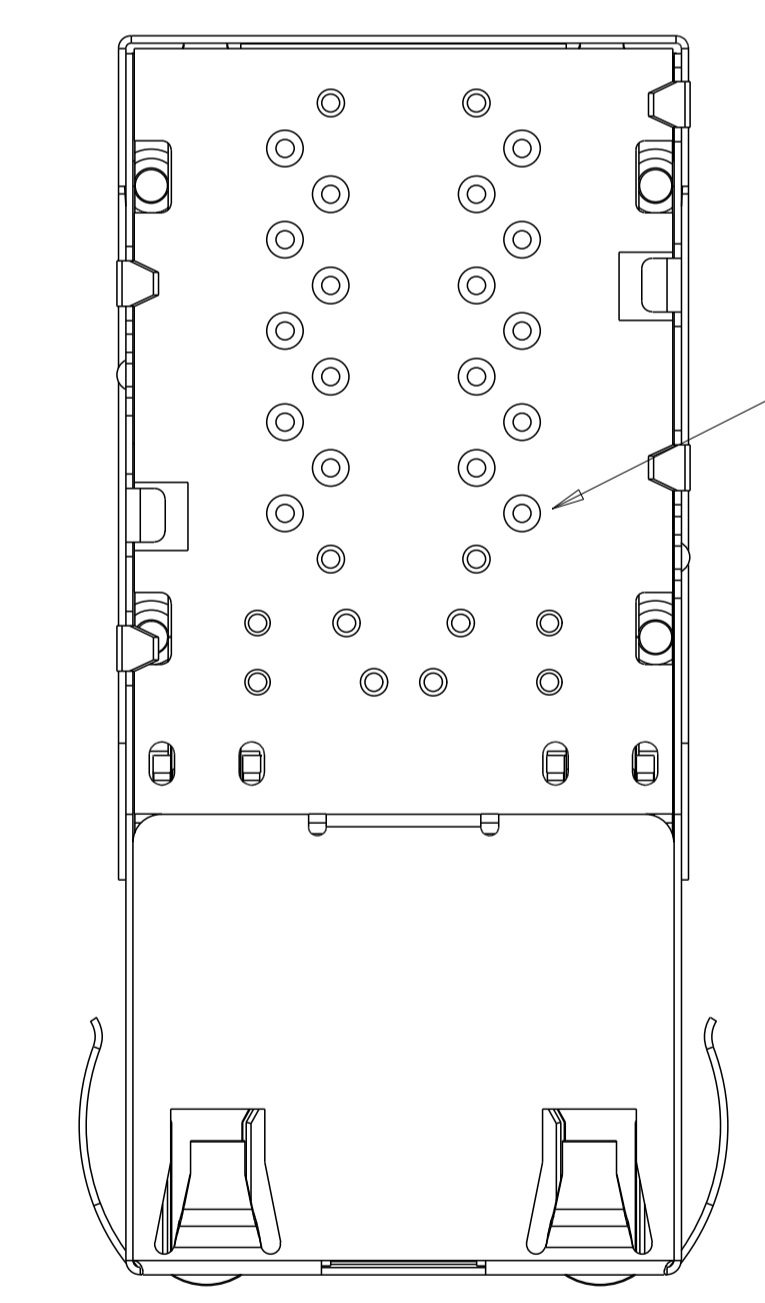
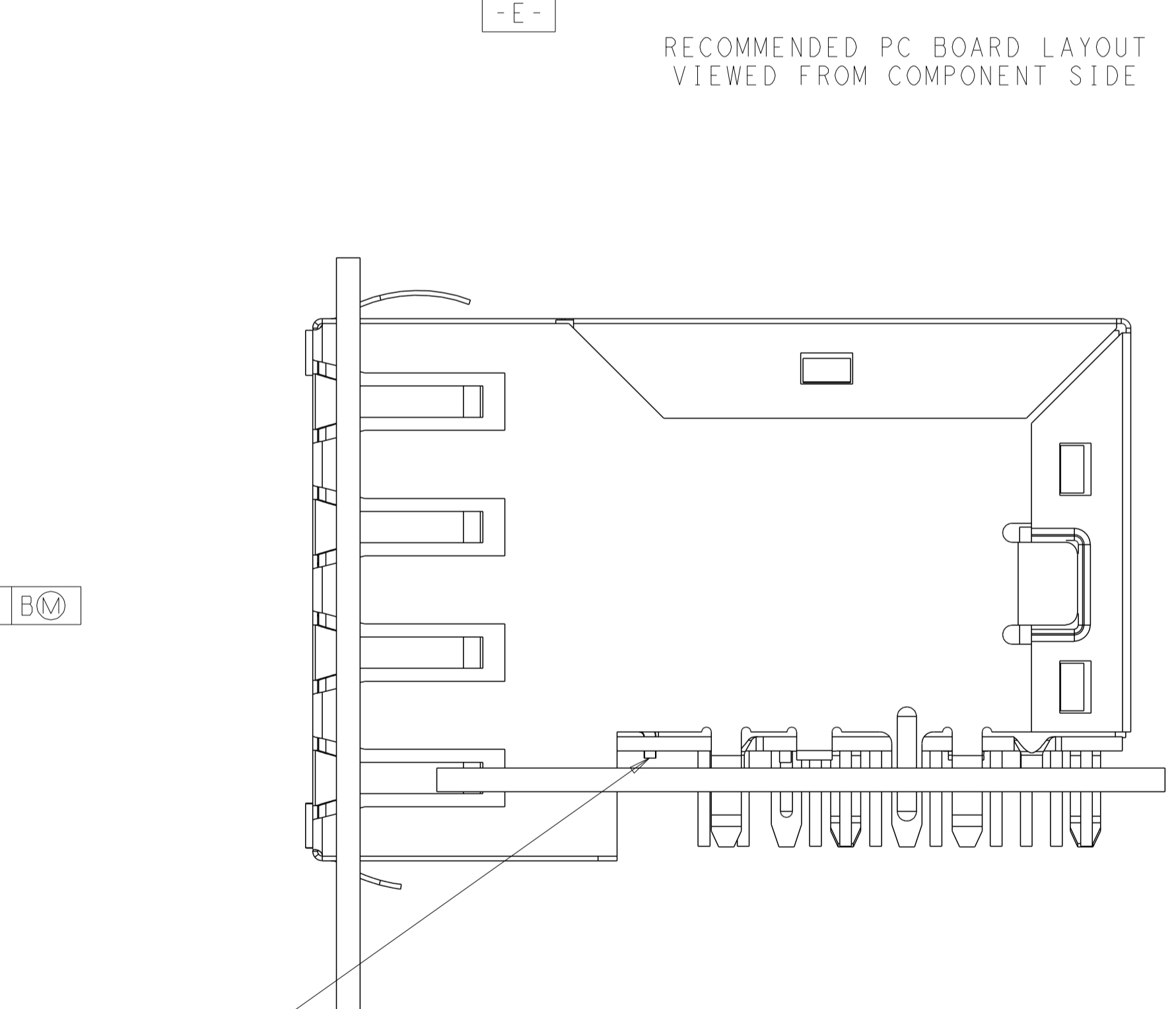
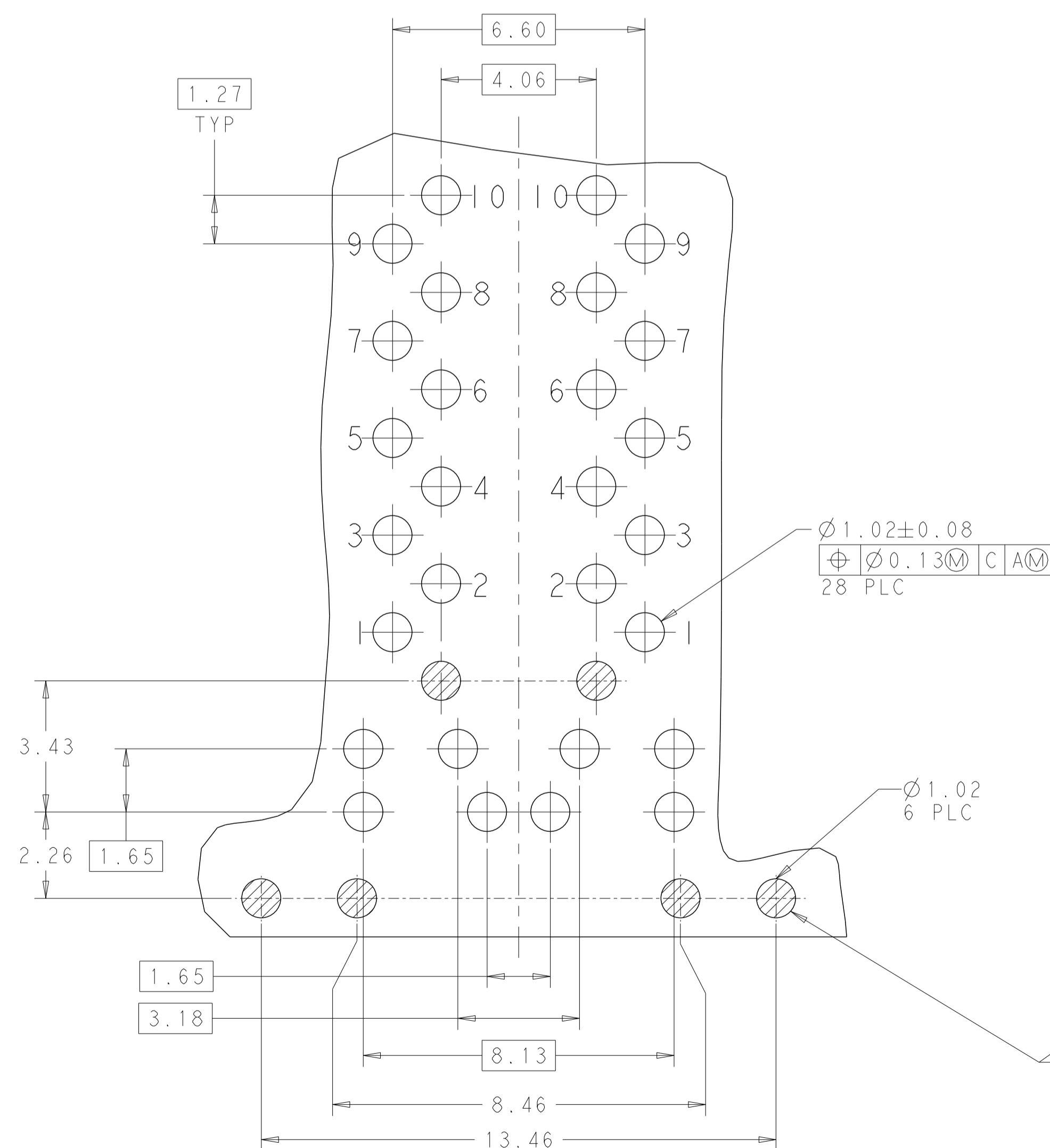
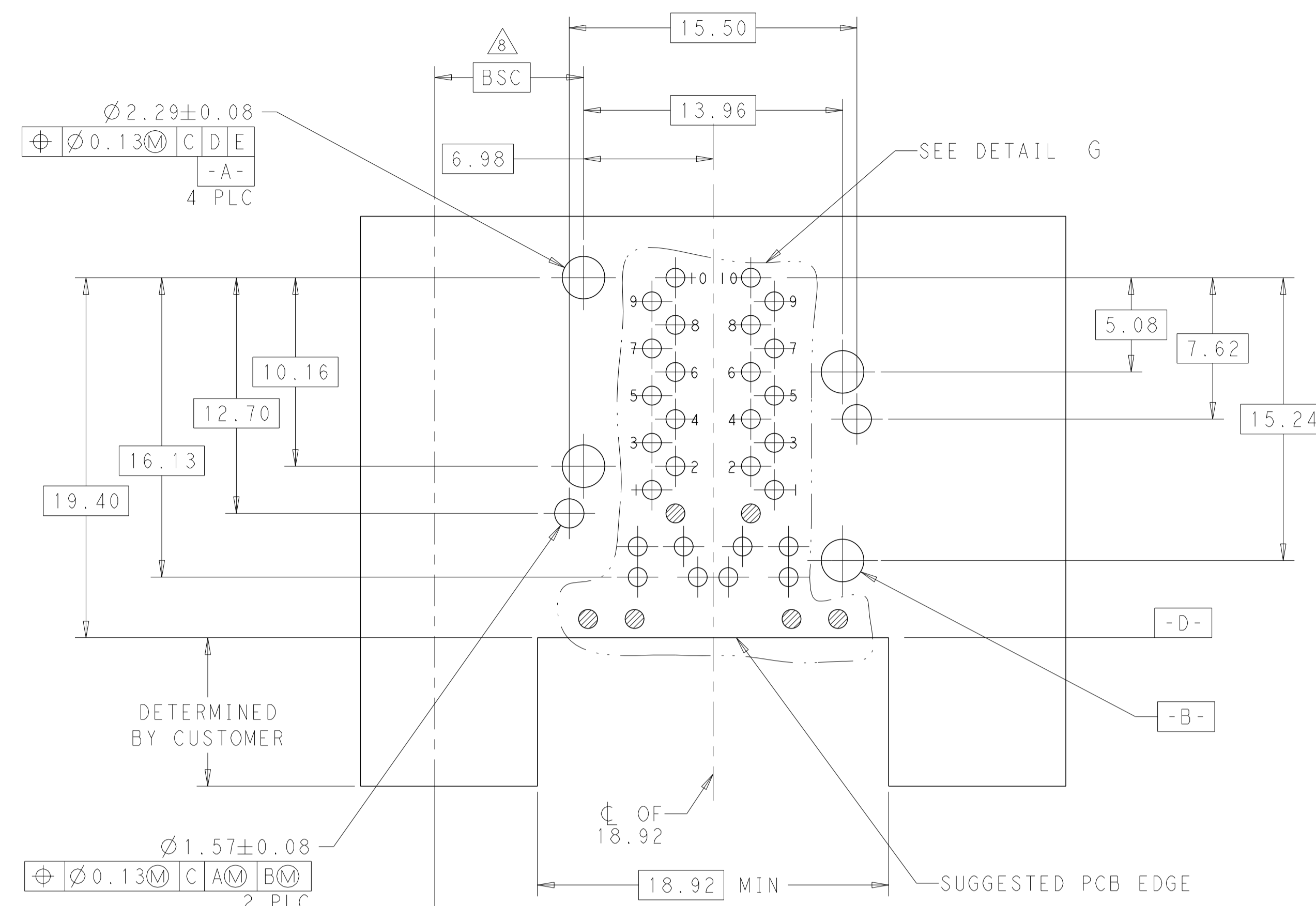
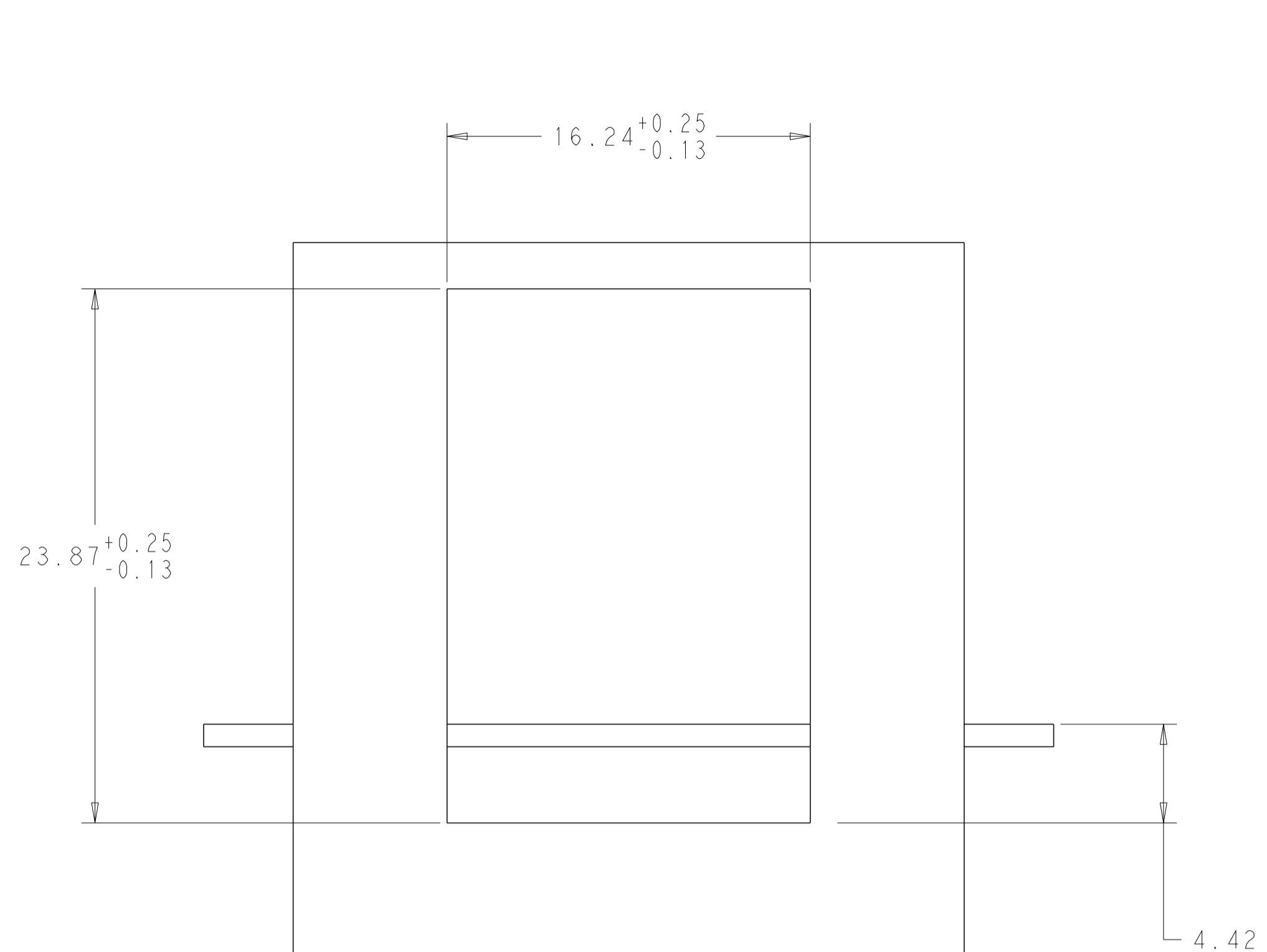
3.30	ULWG	ULWG/YELLOW	ULWG	ULWG/YELLOW	9-1840852-5
3.80	GREEN/YELLOW	GREEN/YELLOW	GREEN/YELLOW	GREEN/YELLOW	1-1840852-3
3.30	GREEN/YELLOW	GREEN/YELLOW	GREEN/YELLOW	GREEN/YELLOW	1840852-3
DIM A	TOP LEFT LED	TOP RIGHT LED	BOTTOM LEFT LED	BOTTOM RIGHT LED	PART NUMBER

THIS DRAWING IS A CONTROLLED DOCUMENT.

DW: TOM HSU/YI LIU	12NOV2010	TRP connector Dongguan China
CHK: TONY YUAN	12NOV2010	
APVD: KEITH ZHU	12NOV2010	
DIMENSIONS: mm	TOLERANCES UNLESS OTHERWISE SPECIFIED:	PRODUCT SPEC
0 PLC ±	1 PLC ±	NAME 2X1 MAG45(TM) MODULE JACK, OFFSET
2 PLC ±	2 PLC ±	108-104004
3 PLC ±0.25	3 PLC ±	APPLICATION SPEC
4 PLC ±	4 PLC ±	SIZE CAGE CODE DRAWING NO
ANGLES ±	ANGLES ±	A1
FINISH	FINISH	WEIGHT
		Customer Drawing
		SCALE NTS
		SHEET 1 OF 4
		REV C



THIS DRAWING IS A CONTROLLED DOCUMENT.		DNW 12NOV2010	TRP connector
DIMENSIONS:		CHK TOM HSU/YI LIU 12NOV2010	Dongguan China
mm	TOLERANCES UNLESS OTHERWISE SPECIFIED:	APPV TONY YUAN 12NOV2010	
	0 PLC ±	KEITH ZHU 12NOV2010	
	1 PLC ±	PRODUCT SPEC	NAME 2X1 MAG45(TM) MODULE JACK, OFFSET
	2 PLC ±	APPLICATION SPEC	108-104004
	3 PLC ±0.25		SIZE CAGE CODE DRAWING NO RESTRICTED TO
	4 PLC ±		A1 C=1840852
	ANGLES ±	WEIGHT	Customer Drawing
	FINISH	SCALE	NTS
		SHEET	2 OF 4
		REV	C

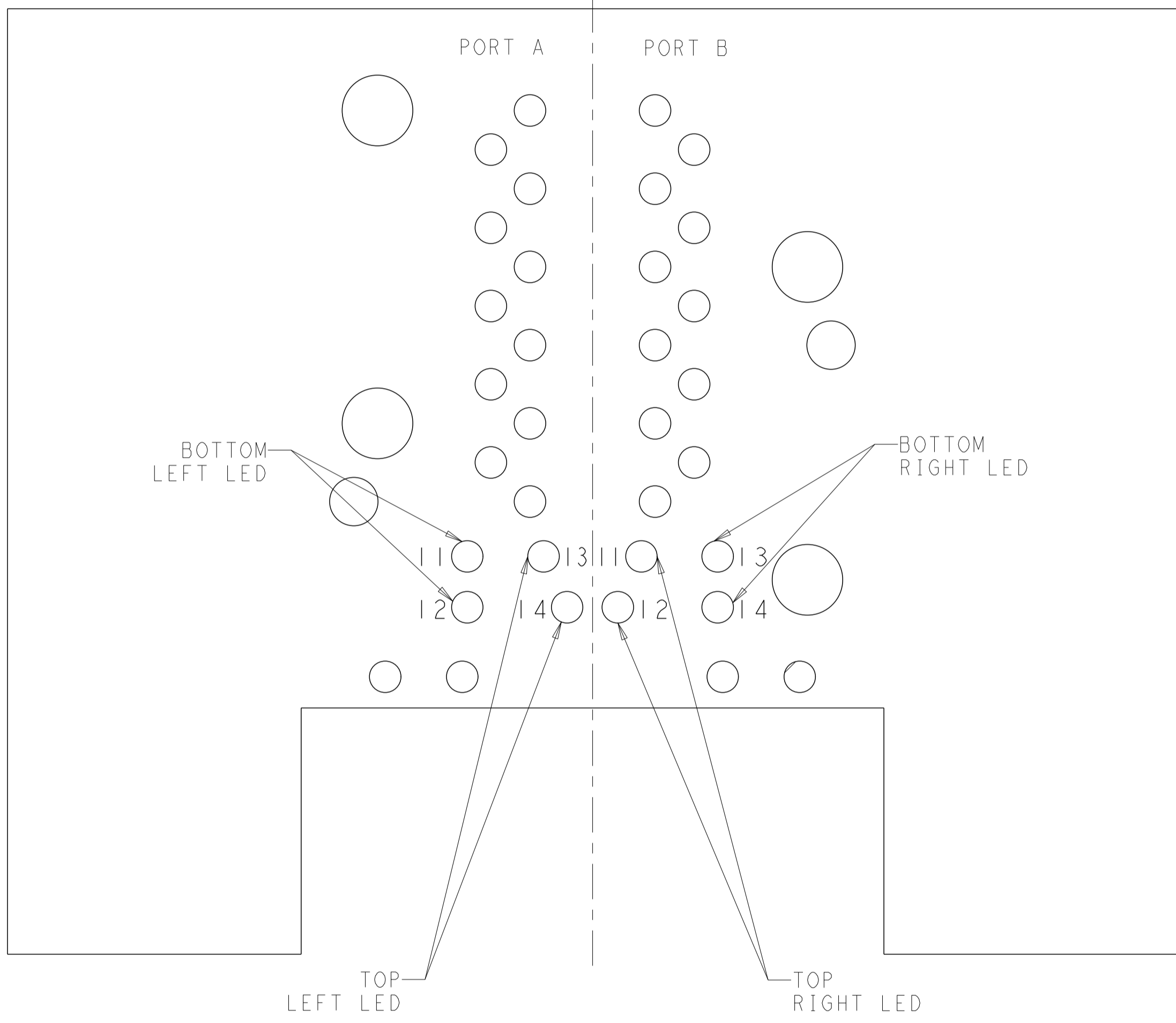


ALL PINS MUST BE SOLDERED WITH BOTTOM PCB. PRECAUTIONS SHOULD BE TAKEN IN PCB DESIGN TO GUARD AGAINST SHORTING TRACES.

PIN 0#: BOTTOM LED'S PIN ON MODULAR JACK AND BOTTOM PCB ARE STUB PINS WITH LENGTH SIMILAR TO PCB STANDOFF HEIGHT. PRECAUTIONS SHOULD BE TAKEN IN PCB DESIGN TO GUARD AGAINST SHORTING TRACES TO STUB PINS. 6 PLC

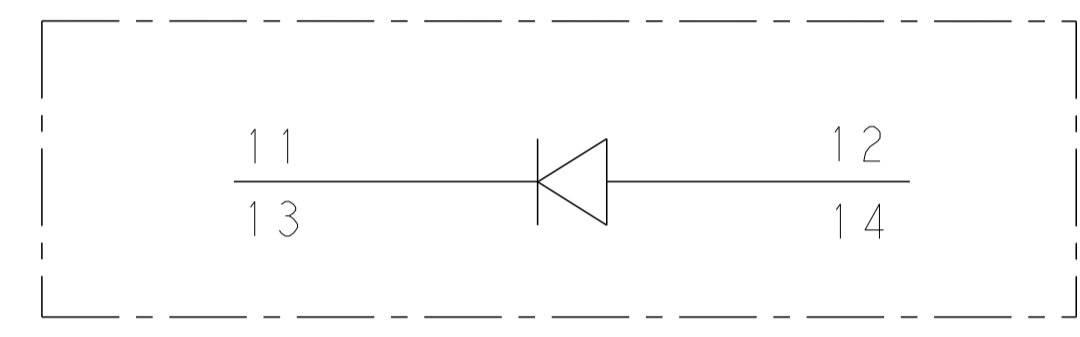
DETAIL G
SCALE 10:1

THIS DRAWING IS A CONTROLLED DOCUMENT.		DWN: TOM HSU/YI LIU 12NOV2010		TRP connector Dongguan China	
DIMENSIONS: mm		CHK: TONY YUAN 12NOV2010		APVD: KEITH ZHU 12NOV2010	
TOLERANCES UNLESS OTHERWISE SPECIFIED:		PRODUCT SPEC		NAME: 2X1 MAG45(TM) MODULE JACK, OFFSET S8G56 GIGABIT CIRCUIT, WITH LED	
0 PLC	±	108-104004		APPLICATION SPEC	
1 PLC	±	SIZE: A1		CAGE CODE: DRAWING NO: C=1840852	
2 PLC	±	WEIGHT: -		RESTRICTED TO: -	
3 PLC	±0.25	MATERIAL: -		SCALE: NTS	
4 PLC	±	FINISH: -		SHEET 3 OF 4	
ANGLES	±	Customer Drawing		REV C	

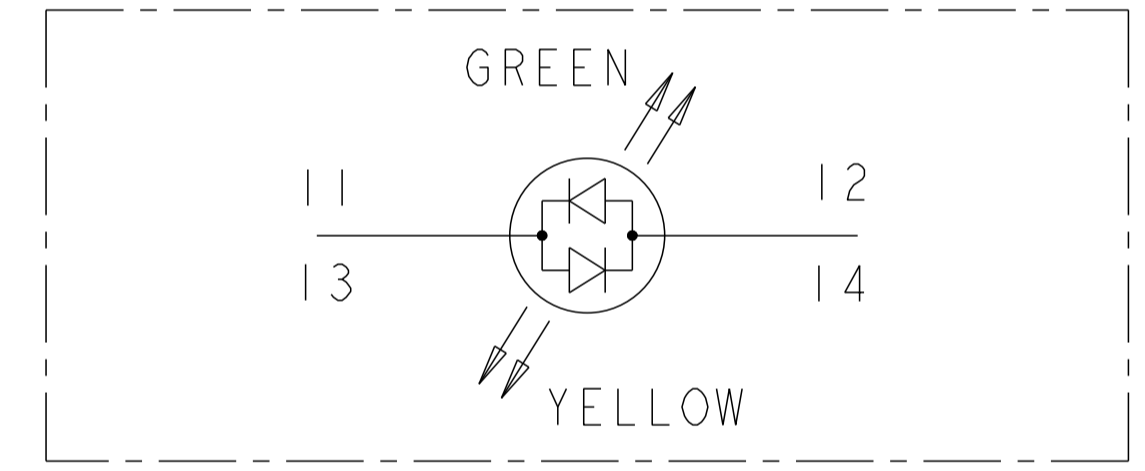


LED HOLE DESIGNATIONS
 VIEWED FROM COMPONENT SIDE
 SCALE 8:1

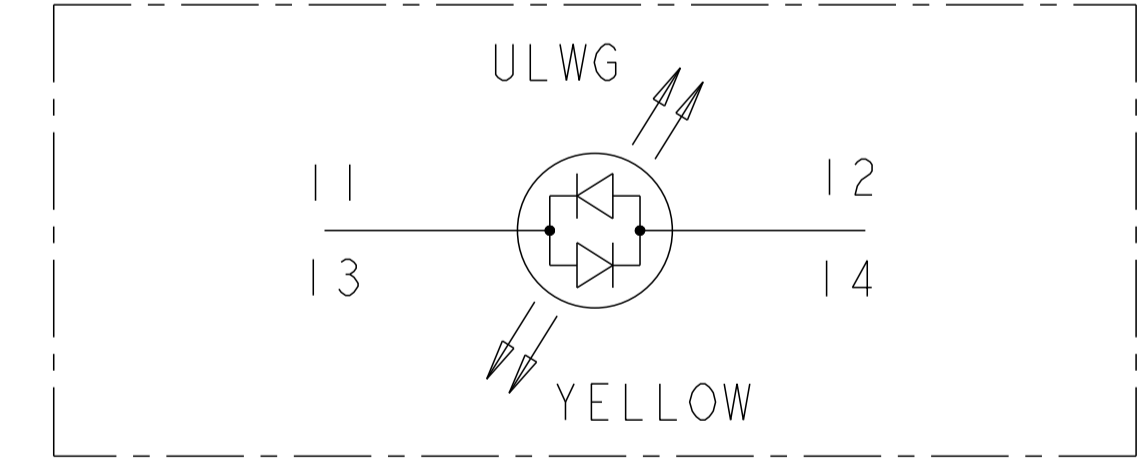
SINGLE COLOR LED



BI-COLOUR LED



BI-COLOUR LED



THIS DRAWING IS A CONTROLLED DOCUMENT.		DNW: TOM HSU/YI LIU 12NOV2010	<p>TRP connector Dongguan China</p>
		CHK: TONY YUAN 12NOV2010	
		APPV: KEITH ZHU 12NOV2010	
DIMENSIONS:	TOLERANCES UNLESS OTHERWISE SPECIFIED:	PRODUCT SPEC	NAME
mm	0 PLC ±	108-104004	2X1 MAG45(TM) MODULE JACK, OFFSET
	1 PLC ±	APPLICATION SPEC	S8G56 GIGABIT CIRCUIT, WITH LED
	2 PLC ±	SIZE	A1
	3 PLC ±0.25	CAGE CODE	
	4 PLC ±	DRAWING NO	C=1840852
MATERIAL	ANGLES	WEIGHT	RESTRICTED TO
-	-	-	-
	FINISH	Customer Drawing	SCALE
	-		NTS
			SHEET 4 OF 4
			REV C