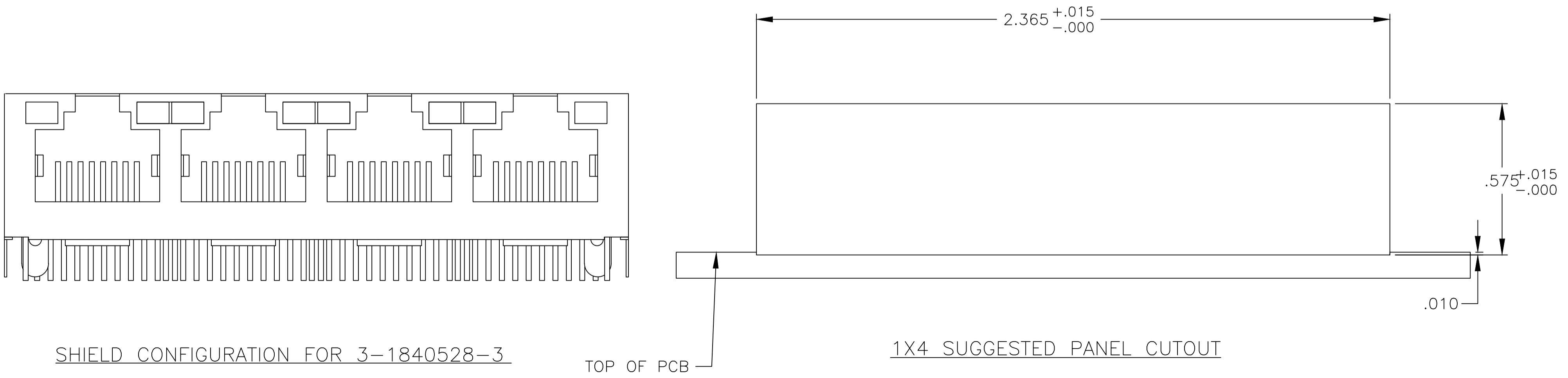
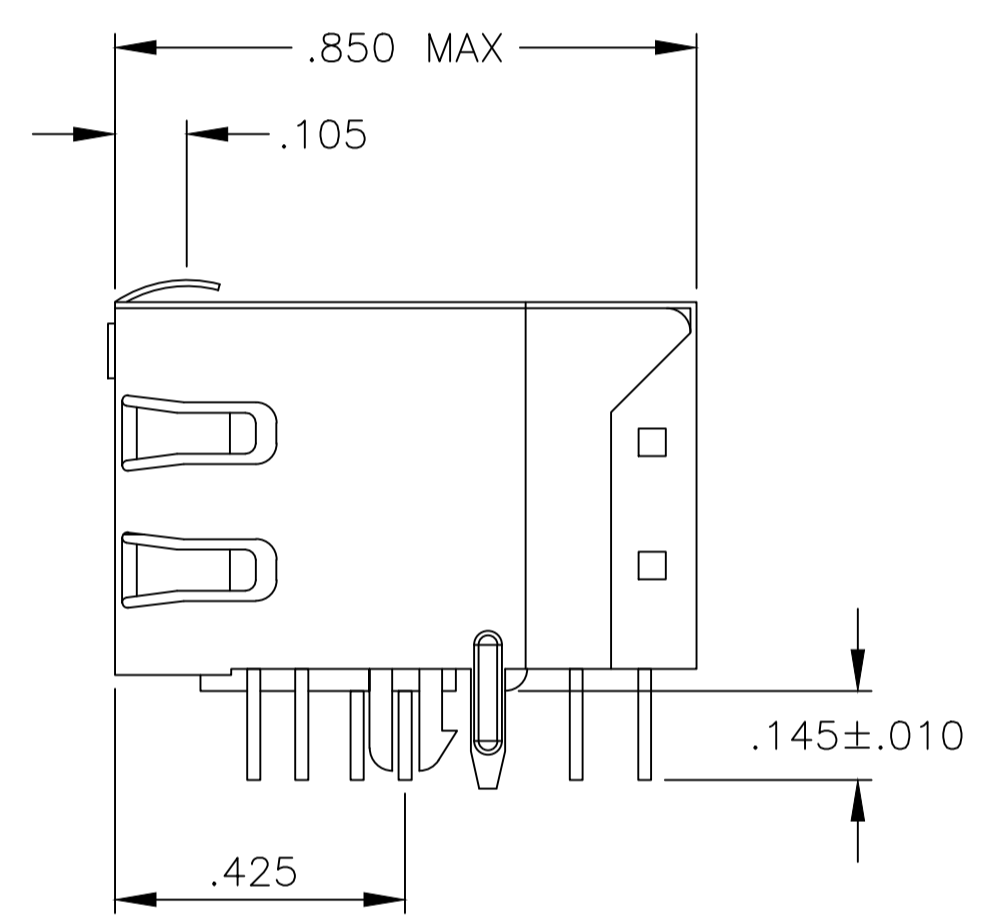
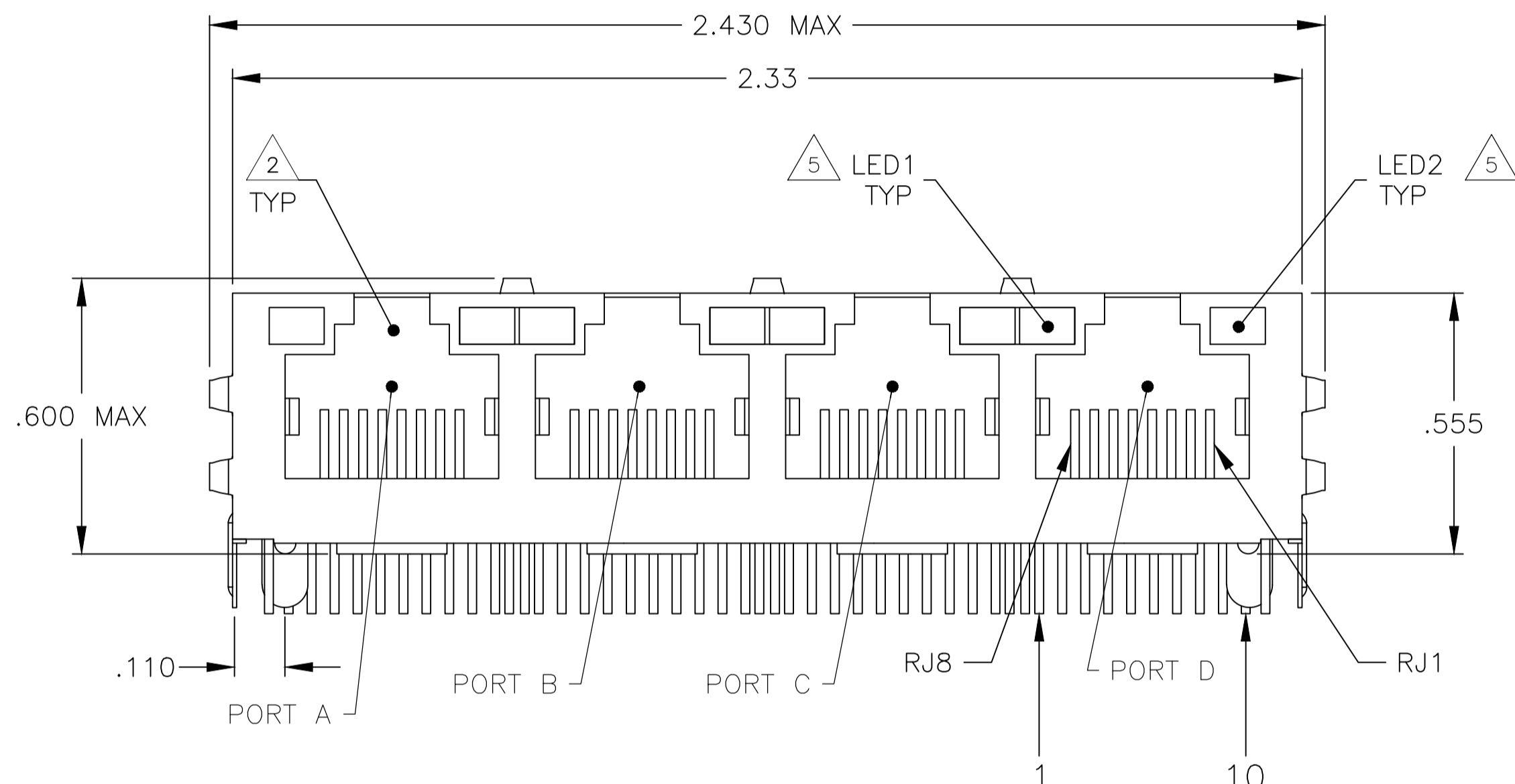
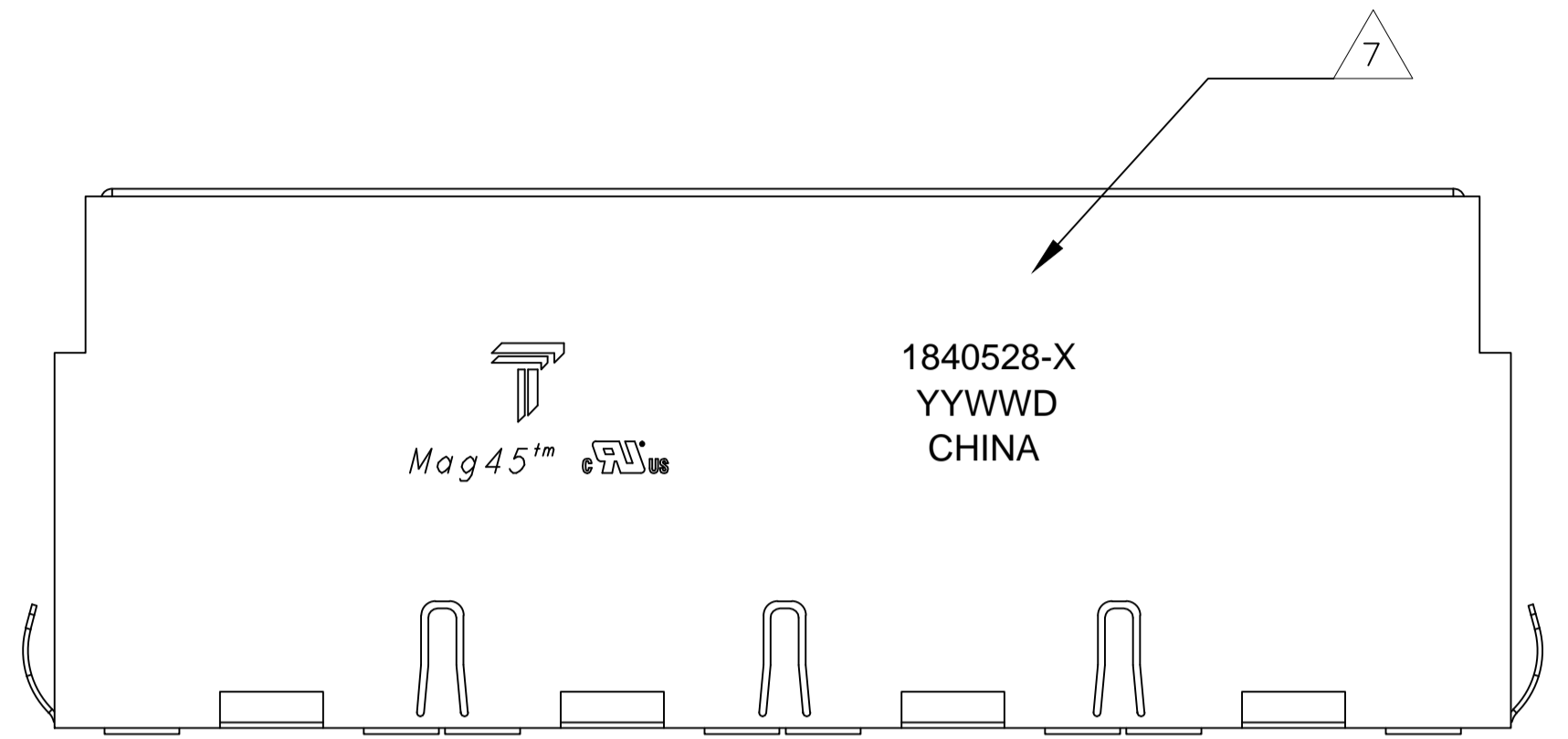


REVISIONS				
P	LTR	DESCRIPTION	DATE	OWN APVD
G		LOGO CHANGE	07APR2013	PP KZ

MECHANICAL:



- 1. MATERIALS:  
 -HOUSING - THERMOPLASTIC PET POLYESTER FLAMMABILITY RATING UL 94V-0.  
 -SHIELD - .010" THICK, C26800 BRASS PREPLATED WITH 30μINCH MIN SEMI-BRIGHT NICKEL. SOLDER TABS POST DIPPED WITH 100μINCH MIN SAC SOLDER.  
 -MOD JACK CONTACTS - 0.0157 X 0.018" PHOSPHOR BRONZE, 50μINCH MIN OVERALL NICKEL UNDERPLATE WITH SELECT 50μINCH MIN HARD GOLD FINISH PLATE. SOLDER TAILS WITH 100μINCH MIN MATTE TIN AND/OR SAC SOLDER DIP.  
 -LIGHT EMITTING DIODE(LED) - DIFFUSED EPOXY LENS, .020" X .020" CARBON STEEL WIREFRAME LEADS PRE-PLATED WITH 80μINCH SILVER OVER 40μINCH NICKEL UNDERPLATE OVER 40μINCH COPPER UNDERPLATE. POST-PLATED WITH 100μIN MATTE TIN AND/OR SAC SOLDER DIP OR PURE TIN SOLDER DIP.
- 2. RJ45 JACK CAVITY CONFORMS TO FCC RULES AND REGULATIONS PART 68, SUB PART F.
- 3. MAGNETICS  
 -APPLICATION: 10/100/1000 BASE-T  
 -IMPEDANCE: 100 OHMS  
 -TURNS RATIO (CHIP-CABLE): 1:1 ALL FOUR PAIRS  
 -OPEN CIRCUIT INDUCTANCE (OCL): 350uH MIN @100kHz, 0.1VRMS, 8mADC BIAS FROM 0°C TO 70°C, ALL FOUR PAIRS  
 -ALL FOUR PAIRS BI-DIRECTIONAL  
 -PERFORMANCE @ 25°C:  
 INSERTION LOSS (IL): 1.1dB MAX FROM 0.5MHz TO 100MHz  
 RETURN LOSS (RL): 18dB MIN FROM 0.5MHz TO 40MHz  
 12-20LOG(f/80)dB MIN FROM 4.01MHz TO 100MHz  
 CROSSTALK ATTENUATION: 35dB MIN FROM 0.5MHz TO 40MHz  
 33-20LOG(f/50)dB MIN FROM 4.01MHz TO 100MHz  
 COMMON MODE REJECTION RATIO (CMRR): 30dB MIN FROM 0.5MHz TO 100MHz  
 -ISOLATION VOLTAGE: COMPLIES WITH IEEE802.3 2002, PARA 40.6.11, ITEM b.
- 4. OPERATING TEMPERATURE: FROM 0°C TO +70°C.
- 5. THE 250 OHM LED RESISTORS ARE OPTIONAL, PLEASE SEE CHART FOR PRESENCE OR ABSENCE OF LED RESISTORS. IF THE LED WITHOUT 250 OHM RESISTORS, LED IS DRIVEN WITH CONSTANT CURRENT AT APPROX 20mA.  
 LED COLOR : DOMINANT WAVELENGTH (λD): GREEN 568 nm TYP. @ IF=20mA  
 FORWARD VOLTAGE (VF): GREEN 2.2V TYP. @ IF=20mA  
 DOMINANT WAVELENGTH (λD): YELLOW 588 nm TYP. @ IF=20mA  
 FORWARD VOLTAGE (VF): YELLOW 2.1V TYP. @ IF=20mA  
 DOMINANT WAVELENGTH (λD): ORANGE 605 nm TYP. @ IF=20mA  
 FORWARD VOLTAGE (VF): ORANGE 2.05V TYP. @ IF=20mA.  
 IF THE LED WITH 250 OHM RESISTORS,LED IS DRIVEN WITH 5V VOLTAGE AND THE MAX OPERATING CURRENT IS 20mA.  
 LED COLOR : DOMINANT WAVELENGTH (λD): GREEN 568 nm TYP. @ VF=5V  
 FORWARD CURRENT (IF): GREEN 12 mA TYP. @ VF=5V  
 DOMINANT WAVELENGTH (λD): YELLOW 588 nm TYP. @ VF=5V  
 FORWARD CURRENT (IF): YELLOW 13 mA TYP. @ VF=5V
- 6. THE MAGNETICS ARE SYMMETRICAL TO SUPPORT AUTO-MDI/MDIX.
- 7. TRP CONNECTOR LOGO, PART NUMBER, DATE CODE, COUNTRY OF ORIGIN AND AGENCY APPROVAL MARKING IN APPROXIMATE LOCATION SHOWN.
- 8. THESE PARTS ARE RECOMMENDED FOR WAVE SOLDERING PROCESS, PREHEAT TEMPERATURE IS 120°C TO 160°C, 120 SECONDS TO 180 SECONDS, PEAK WAVE SOLDERING TEMPERATURE IS 260°C MAX, 10 SECONDS MAX.

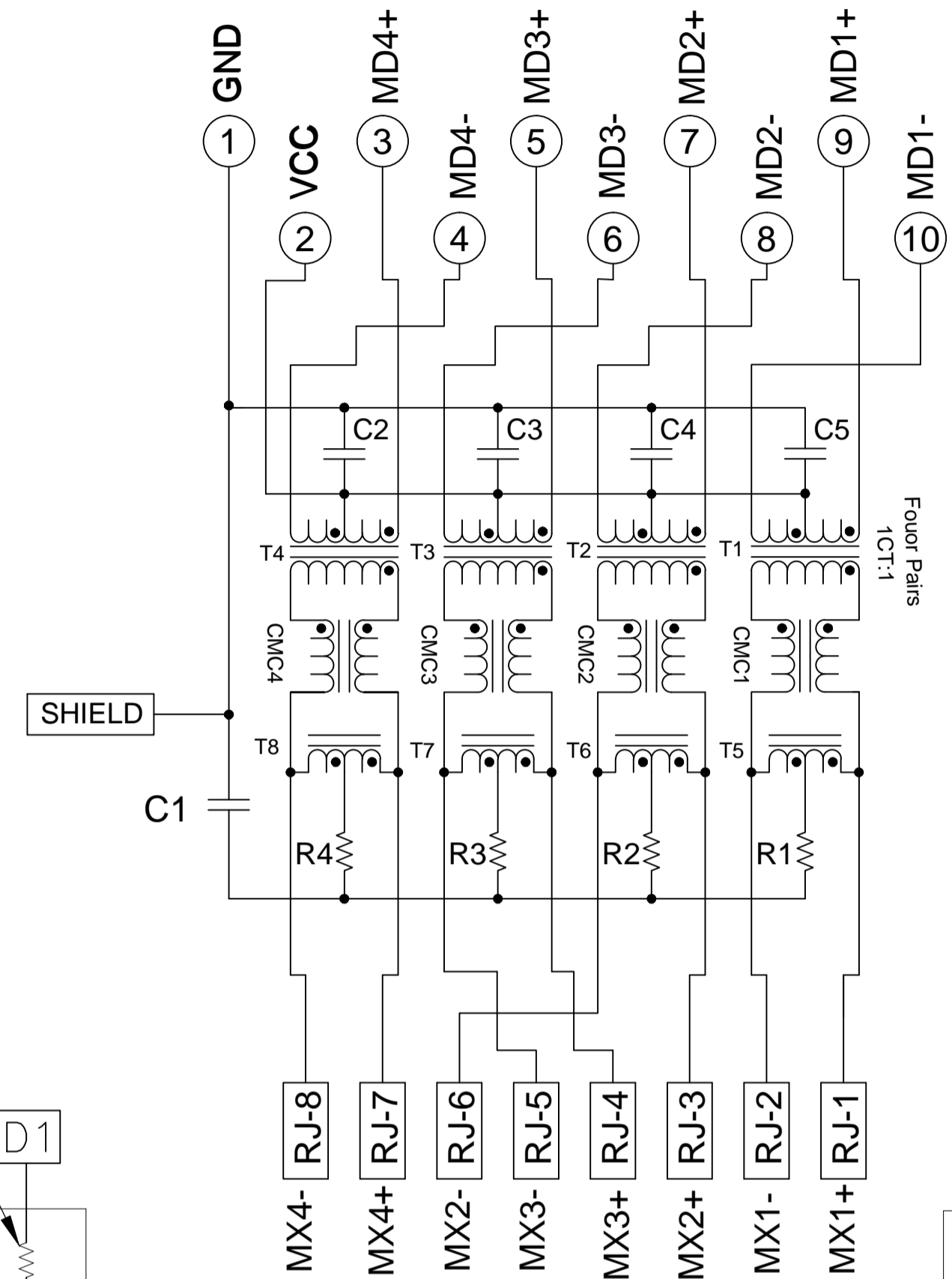
NO	GREEN/ORANGE	NO	YELLOW	NO	3-1840528-3
YES	GREEN	YES	GREEN	YES	1-1840528-1
YES	YELLOW	NO	YELLOW	NO	1-1840528-0
YES	YELLOW	NO	GREEN	NO	1840528-9
YES	GREEN	NO	YELLOW	NO	1840528-8
YES	GREEN	NO	GREEN	NO	1840528-7
YES	GREEN/YELLOW	NO	GREEN/YELLOW	NO	1840528-6
YES	GREEN/YELLOW	NO	GREEN	NO	1840528-5
YES	GREEN/YELLOW	NO	GREEN	YES	1840528-4
YES	YELLOW	YES	YELLOW	YES	1840528-3
YES	YELLOW	YES	GREEN	YES	1840528-2
YES	GREEN	YES	YELLOW	YES	1840528-1
GROUND TABS	LED1	250 OHMS RESISTOR	LED2	250 OHMS RESISTOR	PART NUMBER

THIS DRAWING IS A CONTROLLED DOCUMENT.

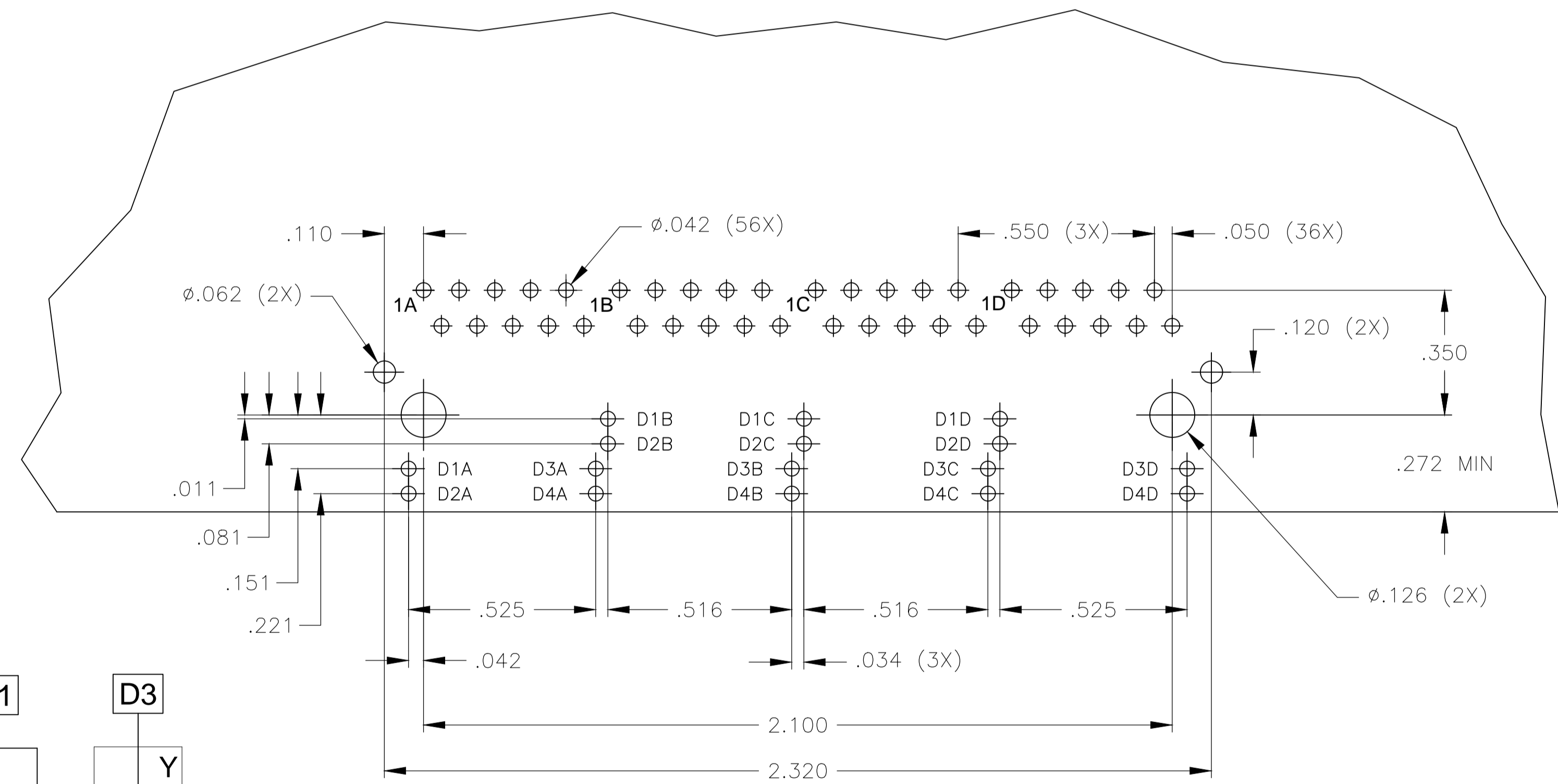
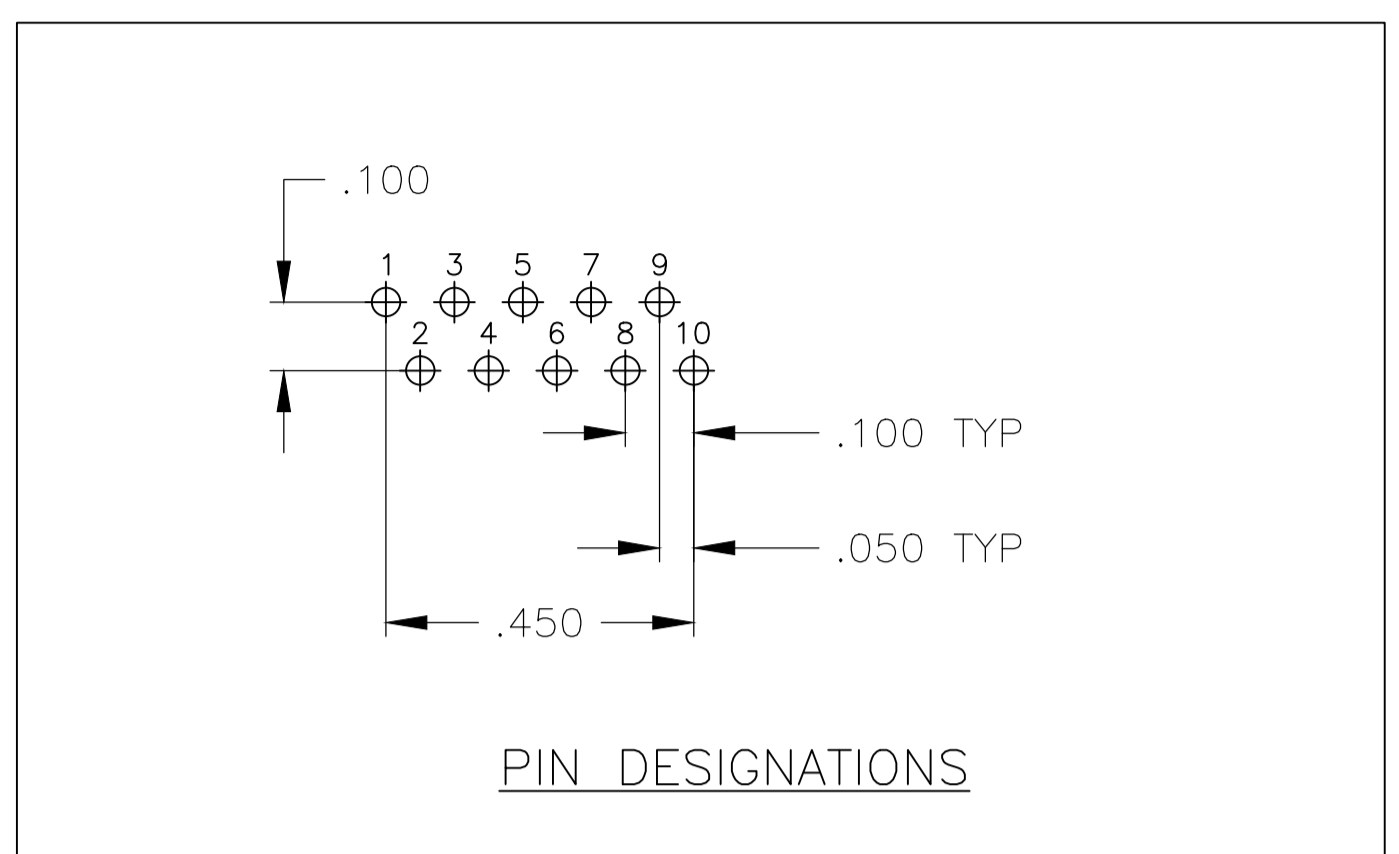
DMN: CLOUD ZENG 27NOV2006	TRP connector
CHK: DENNIS CHEN 27NOV2006	Dongguan China
APVD: TEDDY XIONG 27NOV2006	

PRODUCT SPEC: 108-2100  
 APPLICATION SPEC: 108-2100  
 NAME: 1X4 MAG45(TM) MODULAR JACK 7G23P5 GIGABITC CIRCUIT, SHIELDED, WITH LEADS  
 SIZE: A1 CAGE CODE: DRAWING NO: 1840528 RESTRICTED TO: -  
 MATERIAL: 1 FINISH: 1 WEIGHT: - SCALE: NTS SHEET 1 OF 2 REV G

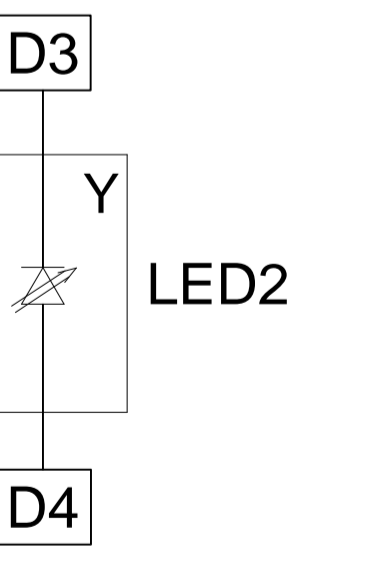
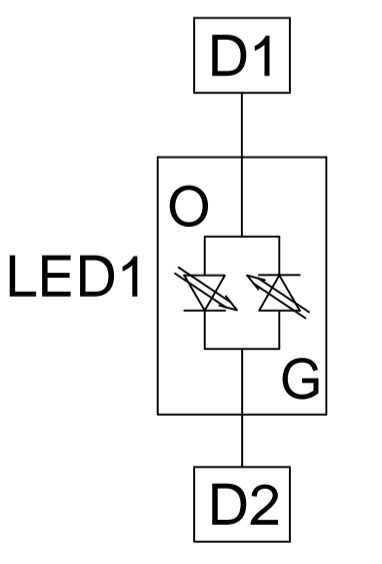
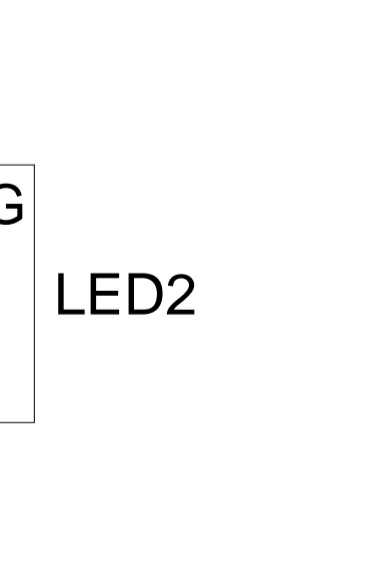
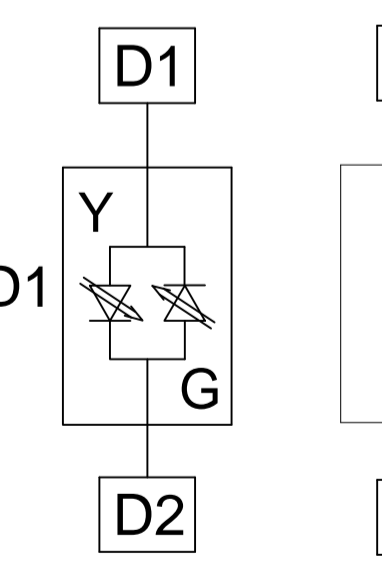
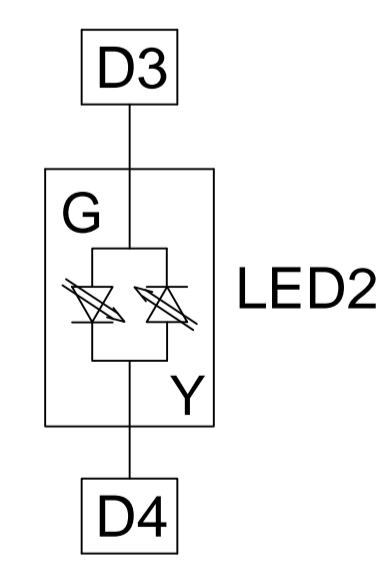
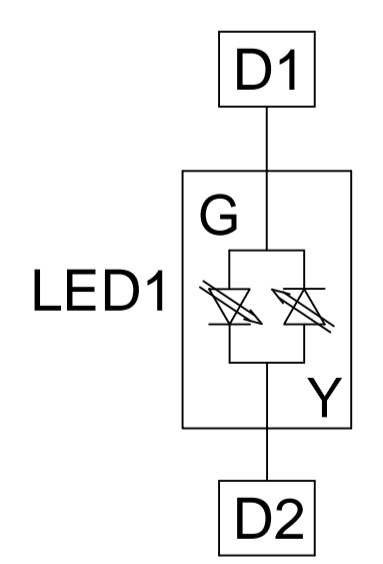
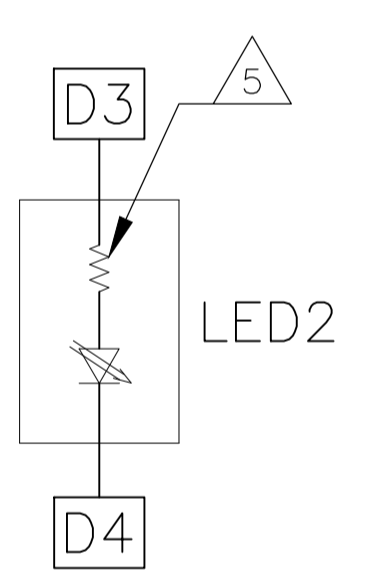
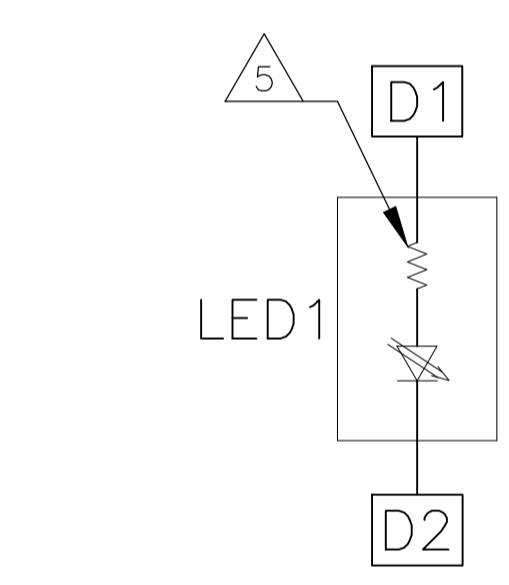
7G23P5 GIGABIT CIRCUIT 



R1-R4 = 75 OHMS, 1/16W RESISTOR  
 C1 = 1000pF, 2kV CAPACITOR  
 C2 - C5 = 0.1uF, 50V, X7R CAPACITOR



SUGGESTED PCB LAYOUT  
 (Component Side)



LED CONFIGURATION  
 ONLY FOR 1840528-6

LED CONFIGURATION  
 ONLY FOR 1840528-5

LED CONFIGURATION  
 ONLY FOR 3-1840528-3

THIS DRAWING IS A CONTROLLED DOCUMENT.		OWN: CLOUD ZENG 27NOV2006	TRP connector Dongguan China	
DIMENSIONS: INCHES		CHK: DENNIS CHEN 27NOV2006	NAME: 1X4 MAG45(TM) MODULAR JACK	
TOLERANCES UNLESS OTHERWISE SPECIFIED:		APP'D: TEDDY XIONG 27NOV2006	DRAWING NO: 108-2100	
0 PLC ± -		PRODUCT SPEC: 108-2100		RESTRICTED TO
1 PLC ± .010		APPLICATION SPEC: -		
2 PLC ± .005		MATERIAL: -		SIZE: A1
3 PLC ± .005		FINISH: -		CAGE CODE: -
4 PLC ± -		WEIGHT: -		DRAWING NO: C=1840528
ANGLES ± -		CUSTOMER DRAWING		SCALE: NTS
		SHEET 2 OF 2		REV G