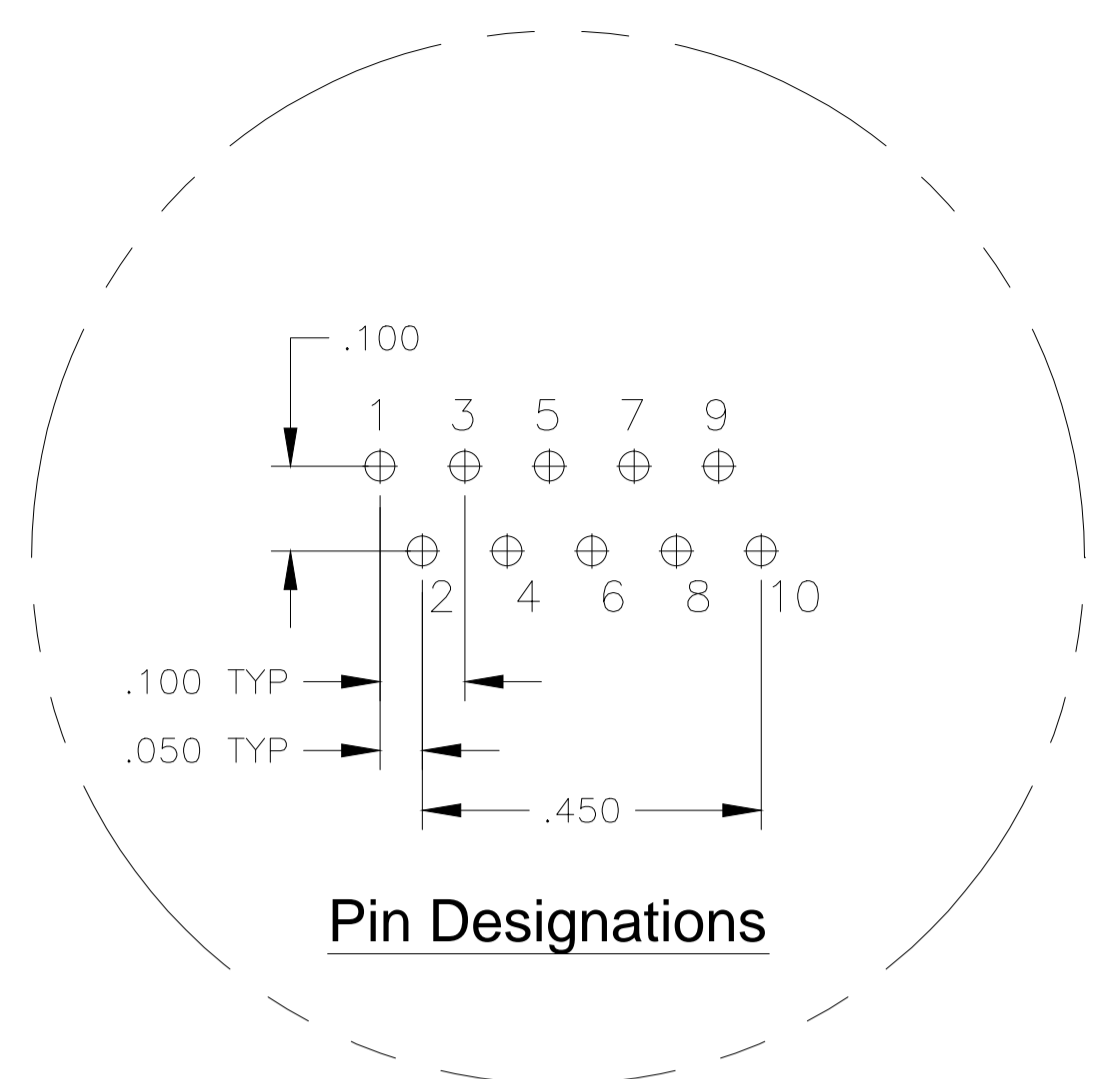
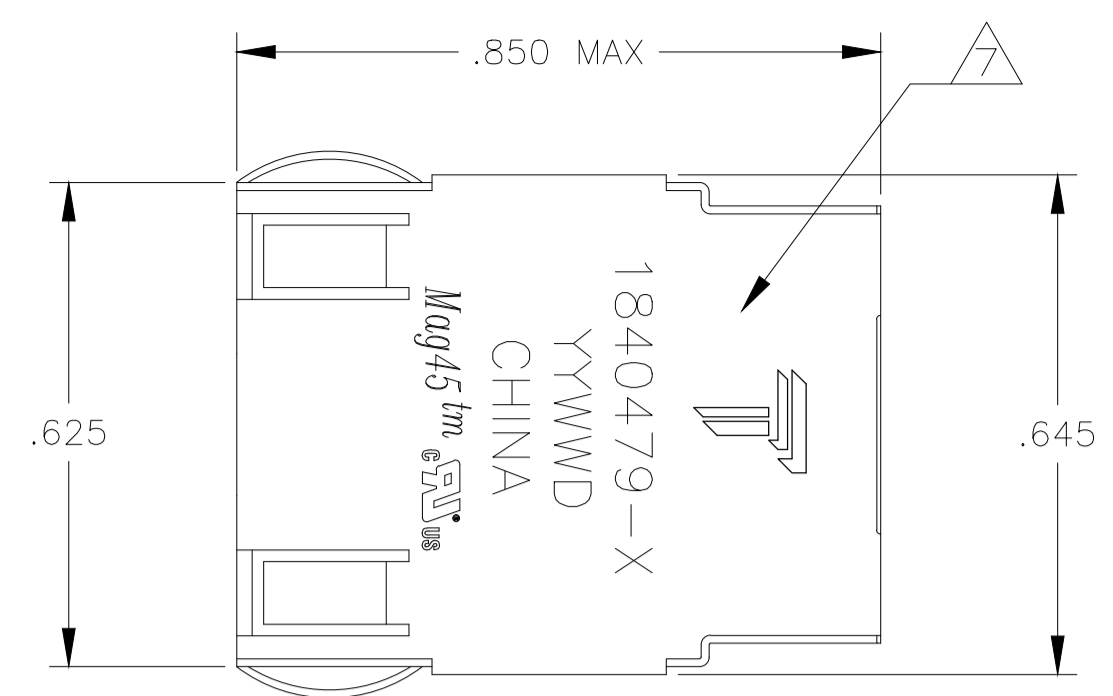


REVISIONS				
REV	DATE	DESCRIPTION	BY	APP'D
B	07APR2013	LOGO CHANGE	PP	KZ



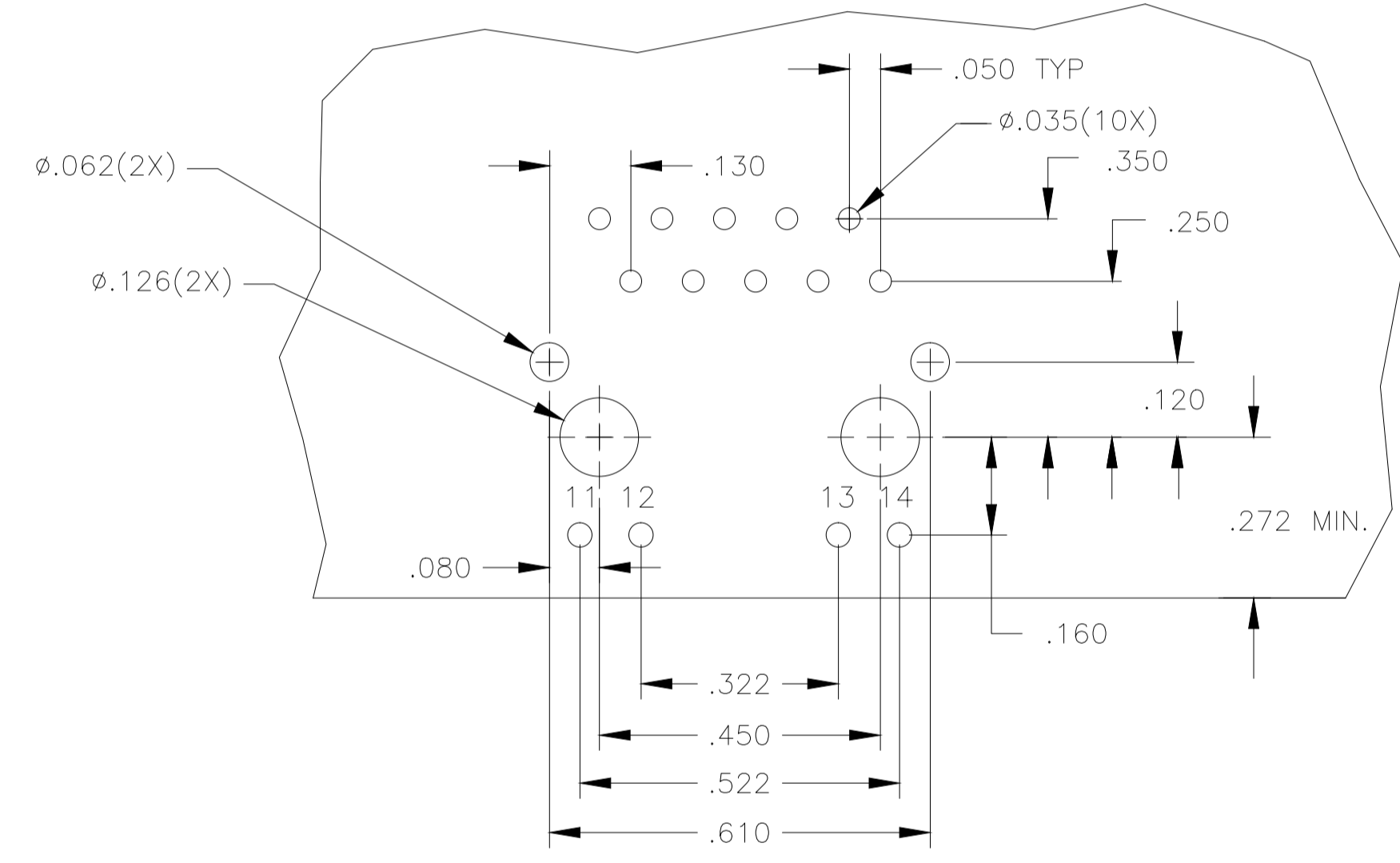
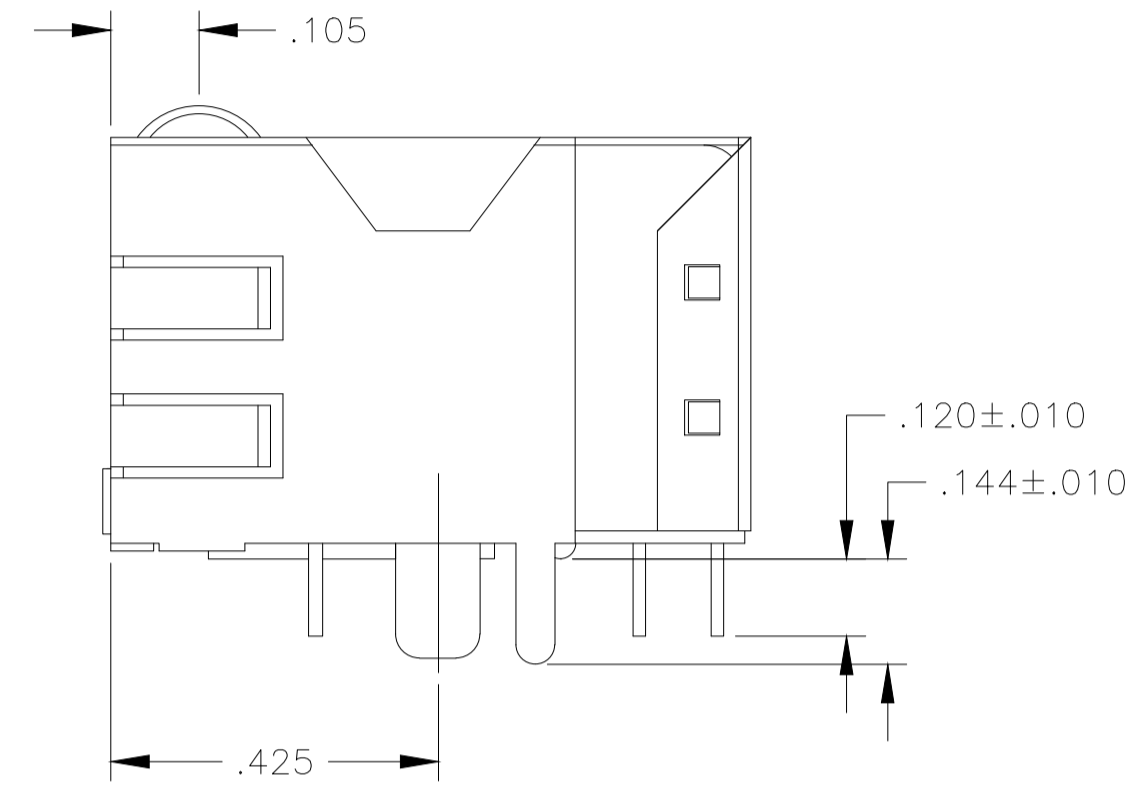
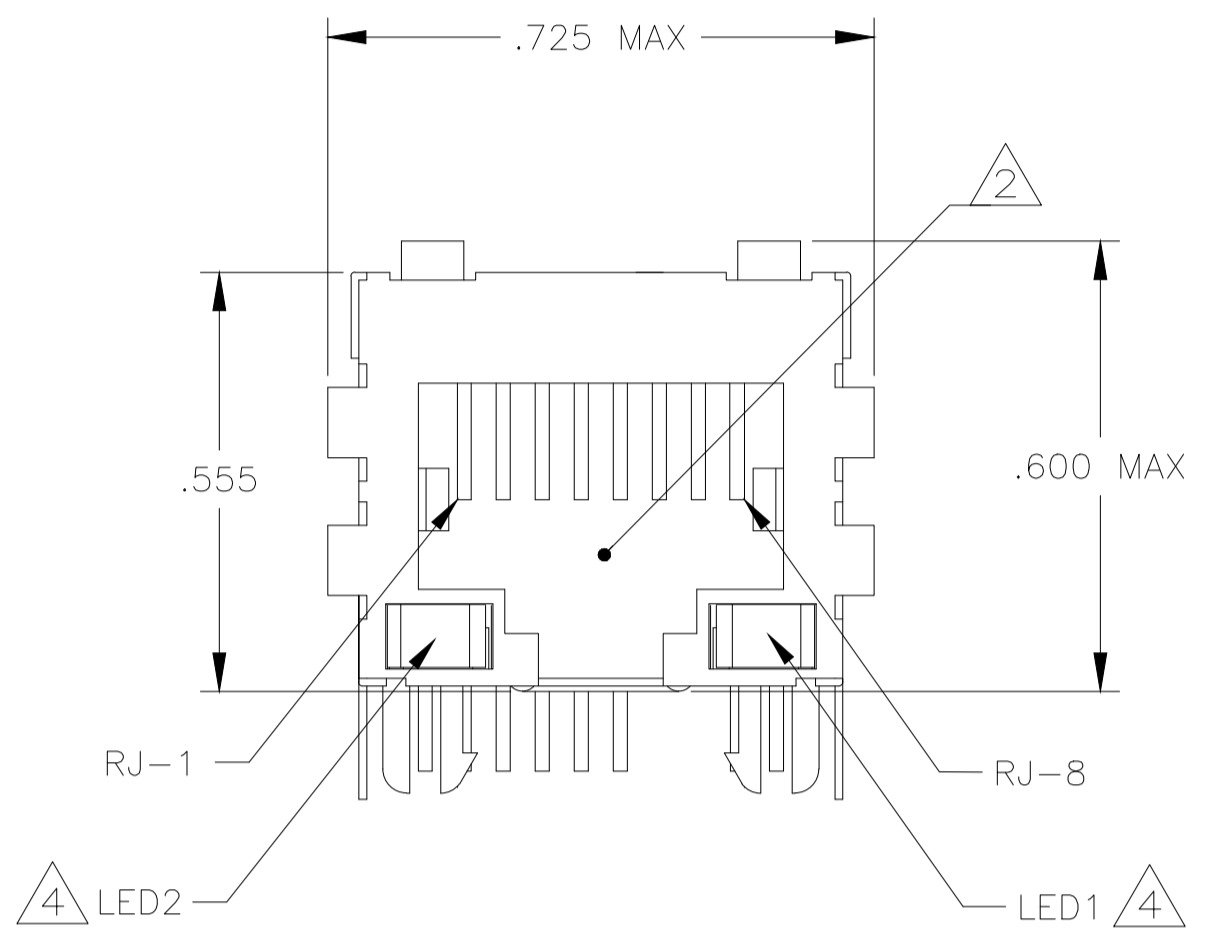
MATERIALS:
 HOUSING - THERMOPLASTIC PET POLYESTER FLAMMABILITY RATING UL 94V-0.
 SHIELD - .010" THICK, C26800 BRASS PREPLATED WITH 30μINCH MIN SEMI-BRIGHT NICKEL. SOLDER TABS POST DIPPED WITH 100μINCH MIN SAC SOLDER.
 MOD JACK CONTACTS - 0.0157 X 0.018" PHOSPHOR BRONZE, 50μINCH MIN OVERALL NICKEL UNDERPLATE WITH SELECT 50μINCH MIN HARD GOLD FINISH PLATE.
 SOLDER TAILS WITH 100μINCH MIN MATTE TIN AND/OR SAC SOLDER DIP.

RJ45 JACK CAVITY CONFORMS TO FCC RULES AND REGULATIONS PART 68, SUB PART F.

MAGNETICS
 -IMPEDANCE: 100 OHMS
 -TURNS RATIO (CHIP-CABLE): TX = 1:1, RX = 1:1
 -OPEN CIRCUIT INDUCTANCE (OCL): 350μH MIN @100kHz, 0.1VRMS, 8mADC BIAS FROM -40°C TO 85°C, TX AND RX
 -POE CURRENT: 350mADC MAX
 -PERFORMANCE @ 25°C:
 INSERTION LOSS (IL): 1.1dB MAX FROM 0.5MHz TO 100MHz
 RETURN LOSS (RL): 18dB MIN FROM 0.5MHz TO 30MHz
 18-20LOG(f/30)dB MIN FROM 30.1MHz TO 60MHz
 12dB MIN FROM 60.1MHz TO 80MHz
 CROSSTALK ATTENUATION: 35dB MIN FROM 0.5MHz TO 40MHz
 33-20LOG(f/50)dB MIN FROM 40.1MHz TO 100MHz
 COMMON MODE REJECTION RATIO (CMRR): 30dB MIN FROM 0.5MHz TO 100MHz
 -ISOLATION VOLTAGE: COMPLIES WITH IEEE802.3af 2003, PARA 33.4.1, ITEM a. CUT OFF CURRENT 2.0 mA.

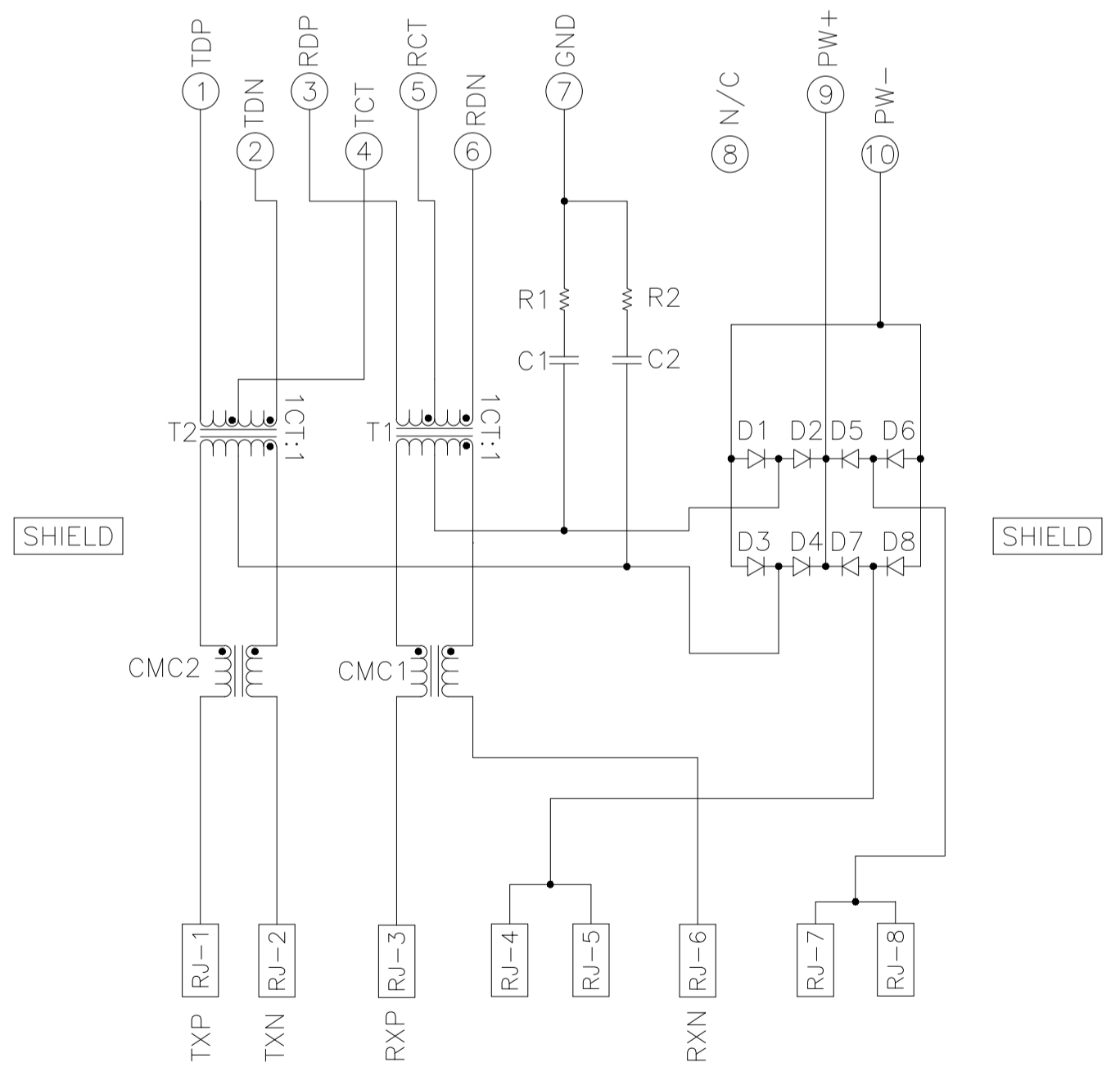
LED IS DRIVEN WITH CONSTANT CURRENT APPROX 20 mA
 DOMINANT WAVE LENGTH(D):GREEN 568 nm TYP, AT IF=20mA
 FORWARD VOLTAGE(VF):GREEN 2.2V AT IF=20mA
 DOMINANT WAVE LENGTH(D):RED 624 nm TYP, AT IF=20mA
 FORWARD VOLTAGE(VF):RED 2.1V AT IF=20mA
 DOMINANT WAVE LENGTH(D):ORANGE 608 nm TYP, AT IF=20mA
 FORWARD VOLTAGE(VF):ORANGE 2.1V AT IF=20mA

5. OPERATING TEMPERATURE: FROM -40°C TO 85°C.
 INDICATED CONNECTIONS ARE FOR NIC CONFIGURATION. THE MAGNETICS ARE SYMMETRIC, AND THEREFORE ARE AUTO-MDI/MDIX CAPABLE.
 TRP CONNECTOR LOGO, PART NUMBER, DATE CODE, COUNTRY OF ORIGIN AND AGENCY APPROVAL MARKING IN APPROXIMATE LOCATION SHOWN.
 THESE PARTS ARE RECOMMENDED FOR WAVE SOLDERING PROCESS, PREHEAT TEMPERATURE IS 120°C TO 160°C, 120 SECONDS TO 180 SECONDS, PEAK SOLDERING TEMPERATURE IS 260 °C MAX, 10 SECONDS MAX.
 NOMINAL CURRENT FOR DIODE 700mA MINIMUM.

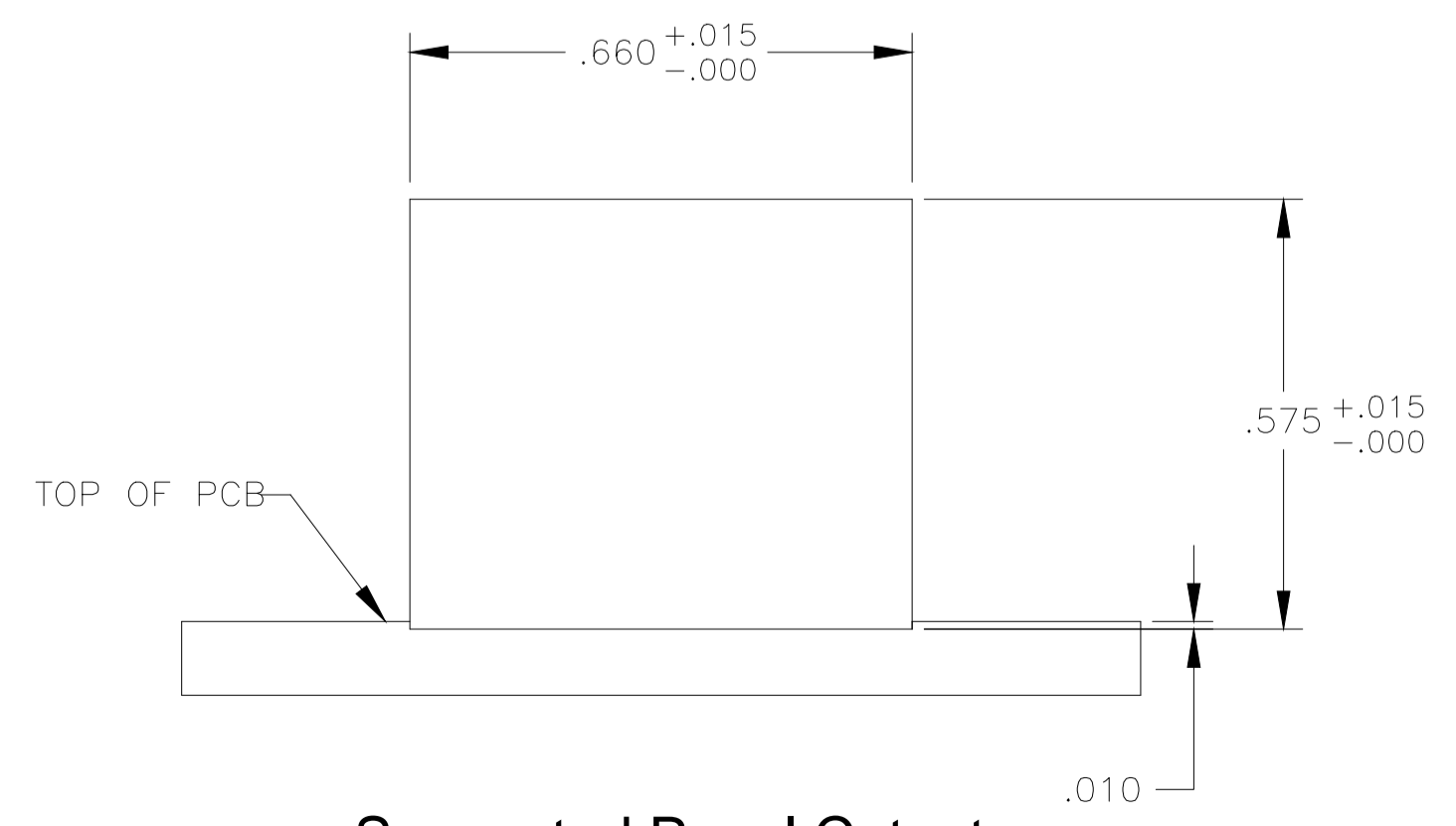
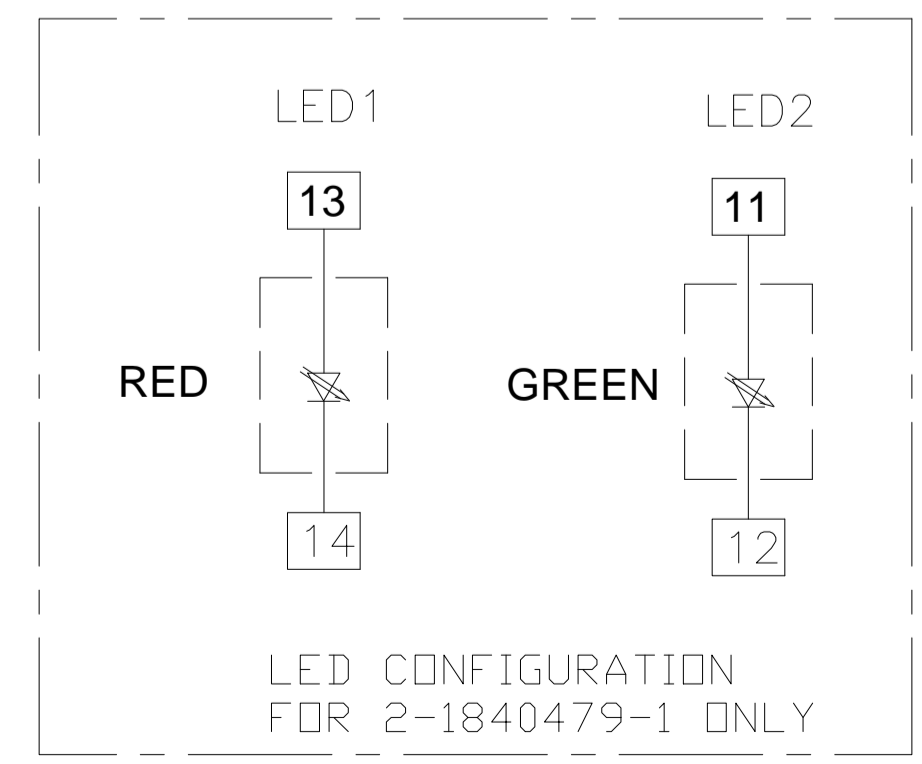
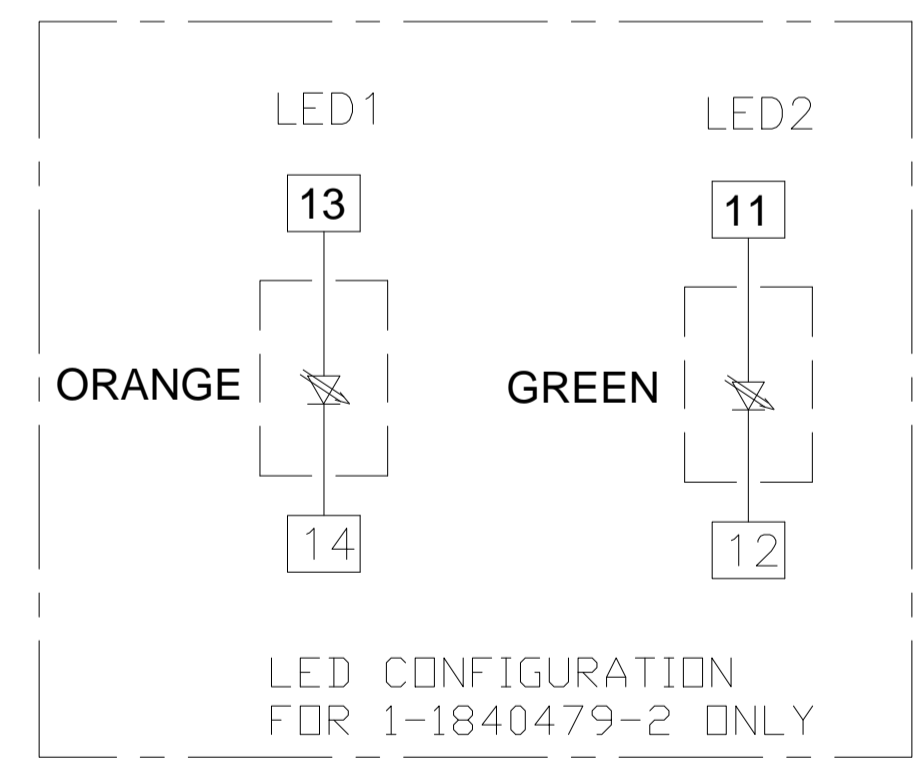


Suggested PCB Layout (Component Side)

4D26 PoE 10/100 BASE-T Circuit



C1-C2=1000 pF, 2kV CAPACITORS
 R1-R2=75 OHMS, 5%, 1/16W RESISTORS
 D1-D8 = RECTIFIER DIODE
 -FORWARD VOLTAGE, Vf = 0.95V MAX @ If = 0.4 A
 -FORWARD CURRENT, If = 0.8A MAX
 -REVERSE VOLTAGE, Vr = 200V MAX



Suggested Panel Cutout

GREEN	ORANGE	1-1840479-2
GREEN	RED	2-1840479-1
LED2	LED1	PART NUMBER

THIS DRAWING IS A CONTROLLED DOCUMENT.		DMN: SKY ZHAO 06JUL2009	TRP connector Dongguan China
DIMENSIONS: INCHES		CHK: EVAN MA 06JUL2009	
TOLERANCES UNLESS OTHERWISE SPECIFIED:		APP'D: KEITH ZHU 06JUL2009	PRODUCT SPEC: 108-2100
0 PLC	± .		NAME: 1X1 MAG45(TM), MODULAR JACK, 4D26 SERIES PoE CIRCUIT, SHIELDED
1 PLC	± .010		SIZE: A1
2 PLC	± .010		CAGE CODE: 00779
3 PLC	± .005		DRAWING NO: 1840479
4 PLC	± .		RESTRICTED TO: -
ANGLES	± .		SCALE: NTS
MATERIAL	FINISH	WEIGHT: -	SHEET 1 OF 1
CUSTOMER DRAWING		REV: B	