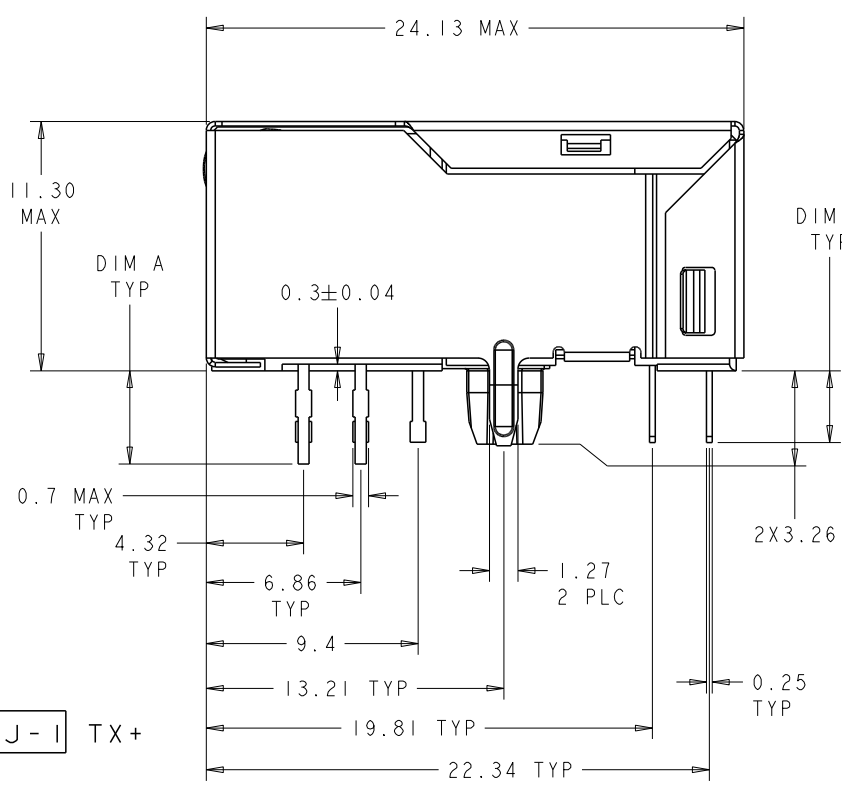
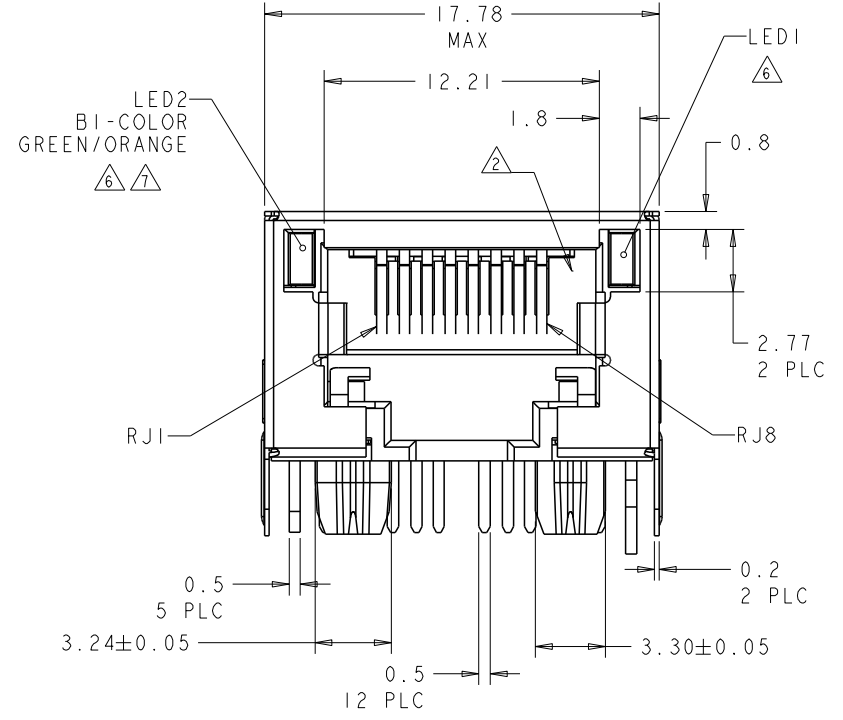
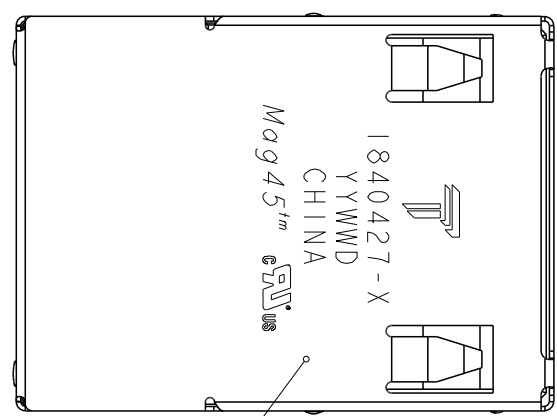
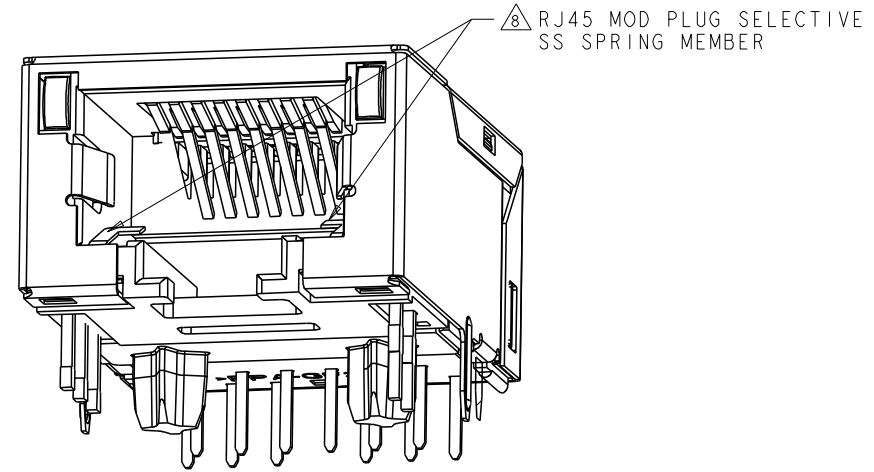


REVISIONS				
REV	DATE	BY	CHKD	APPD
B	10MAY2013	TY	KZ	



- △ MATERIALS:  
 -HOUSING: HIGH TEMPERATURE NYLON, BLACK, UL 94V-0  
 -SHIELD: 0.20mm THICK, BRASS PREPLATED WITH 0.76 μm MIN SEMI-BRIGHT NICKEL; POST-DIPPED WITH 2μm MIN SAC 305 ALLOY LEAD FREE SOLDER (TIN PRIMARY, 3% SILVER, 0.5% COPPER)  
 -CONTACT TAILS: 0.25mm THICK, PHOSPHOR BRONZE, 1.27 μm MIN OVERALL NICKEL UNDERPLATE, 3μm MIN TIN PLATE  
 -MOD JACK CONTACTS: 0.25mm THICK, PHOSPHOR BRONZE, 1.27 μm MIN OVERALL NICKEL UNDERPLATE, WITH 0.76μm MIN LOCALIZED GOLD PLATE AT PLUG INTERFACE  
 -LIGHT EMITTING DIODE (LED): DIFFUSED EPOXY LENS, CARBON STEEL WIREFRAME PREPLATED WITH 2.03 μm SILVER PLATE OVER 1.02 μm NICKEL OVER 1.02 μm COPPER UNDERPLATES; LEADS POST-PLATED WITH 3.05 μm TIN.  
 -LIGHT PIPE: POLYETHER SULFONE
- △ RJ45 JACK CAVITY CONFORMS TO FCC RULES AND REGULATIONS PART 68, SUB-PART F.
- △ MAGNETICS:  
 -APPLICATION: 10/100 BASE-T  
 -IMPEDANCE: 100 OHMS  
 -TURNS RATIO (CHIP:CABLE): TX 1:1, RX: 1:1  
 -OPEN CIRCUIT INDUCTANCE (OCL): 350μH (MIN) @100kHz, 0.1 VRMS  
 8 mA DC BIAS FROM 0°C TO 70°C, TX AND RX  
 -PERFORMANCE @25°C:

FREQUENCY	RETURN LOSS (dB MIN) CIRCUIT IMPEDANCE = 100 OHMS ±15%
0.5 MHz-30 MHz	18
30.1 MHz-60 MHz	18-20 log(f/30) f IS FREQUENCY IN MHz
60.1 MHz-80 MHz	12

FREQUENCY	INSERTION LOSS (dB MAX)	COMMON MODE REJECTION RATIO (dB MIN)	CROSSTALK ATTENUATION (dB MIN)
0.5 MHz-40 MHz	1.1	30	35
40.1 MHz-100 MHz			33-20log(f/50) (f IS FREQUENCY IN MHz)

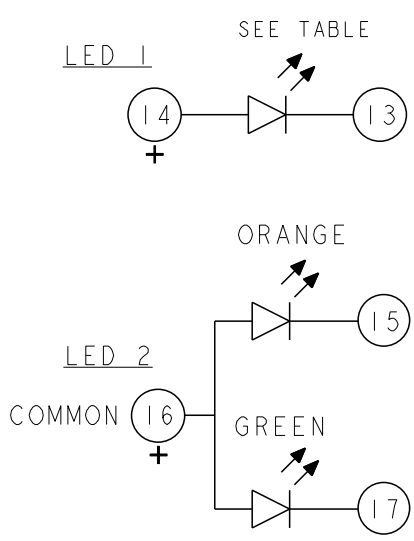
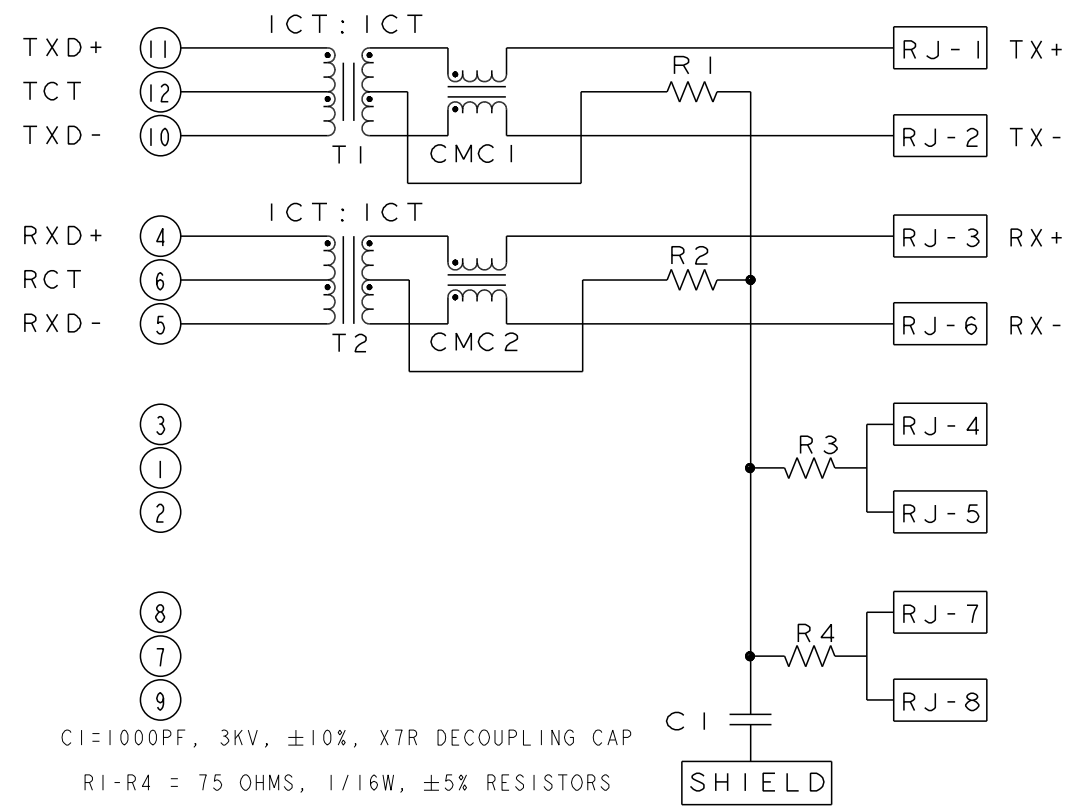
- ISOLATION VOLTAGE: COMPLIES WITH IEEE802.3.2002, PARA 23.5.1.1, ITEM a AND b.

- △ THE MAGNETICS ARE SYMMETRICAL, SUPPORT AUTO-MDI/MDIX.  
 △ OPERATING TEMPERATURE: FROM 0°C TO +70°C.  
 △ LED IS DRIVEN WITH CONSTANT CURRENT AT APPROX 20mA.  
 LED COLOR: DOMINANT WAVELENGTH (λD): GREEN 568 nm TYP. at IF=20mA  
 FORWARD VOLTAGE (VF): GREEN 2.2V TYP. at IF=20mA  
 DOMINANT WAVELENGTH (λD): YELLOW 588 nm TYP. at IF=20mA  
 FORWARD VOLTAGE (VF): YELLOW 2.1V TYP. at IF=20mA  
 DOMINANT WAVELENGTH (λD): ORANGE 605 nm TYP. at IF=20mA  
 FORWARD VOLTAGE (VF): ORANGE 2.1V TYP. at IF=20mA  
 △ LED 2 WILL EMULATE "YELLOW" LIGHT WHEN BOTH GREEN AND ORANGE DIODES ARE DRIVEN AT CONSTANT CURRENT (20mA RECOMMENDED) TO INDICATE THE THIRD COLOR STATE.  
 △ RJ45 MOD PLUG SELECTIVE - THIS CONNECTOR UTILIZES STAINLESS STEEL SPRING MEMBER WHICH PREVENTS THE INSERTION OF A RJ11 (6 POSITION) PLUG INTO THE JACK PORT, WHILE ALLOWING A RJ45 (8 POSITION) PLUG TO MATE FREELY.

WARNING: THIS FEATURE WAS DEVELOPED FOR TYPICAL PLUG INSERTION FORCES. EXCESSIVE INSERTION FORCE MAY OVERCOME THE SELECTIVE FEATURES AND DAMAGE THE CONNECTOR.

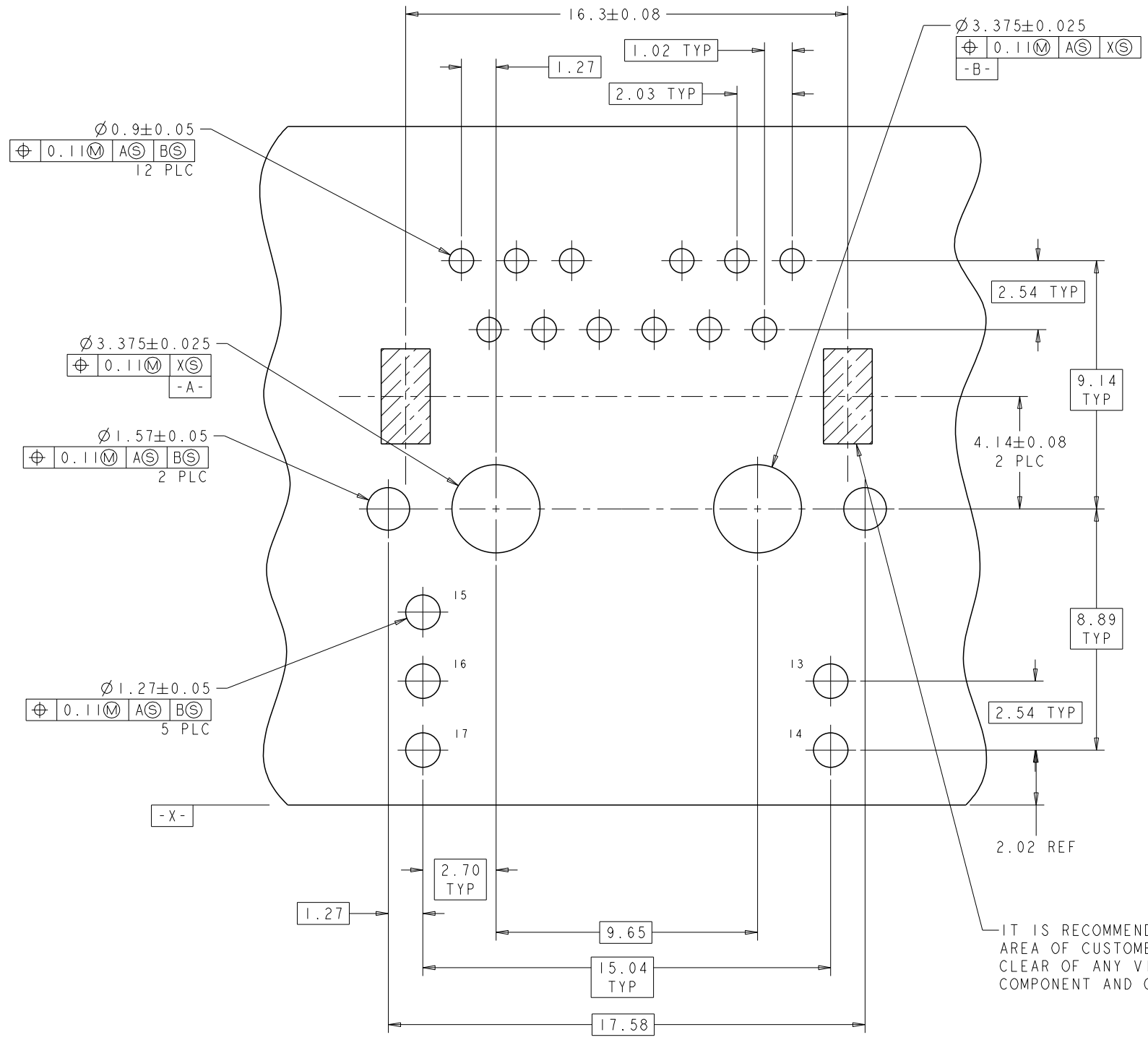
- △ TRADEMARK, PART NUMBER, DATE CODE, COUNTRY OF ORIGIN, AND AGENCY APPROVAL MARKING IN APPROXIMATE LOCATION SHOWN.  
 10 1840427-1 SHOWN UNLESS OTHERWISE NOTED  
 11 THESE PARTS ARE COMPLIANT WITH BOTH WAVE SOLDERING PROCESS PEAK SOLDERING TEMPERATURE 260°C MAX, 10 SECONDS MAX; AND IR REFLOW SOLDERING PROCESS PEAK SOLDERING TEMPERATURE 260°C MAX DURATION TIME 10 SECONDS MAX, OVER 230°C WITHIN 40-60 SECONDS.

826 10/100 BASE-T CIRCUIT △△△



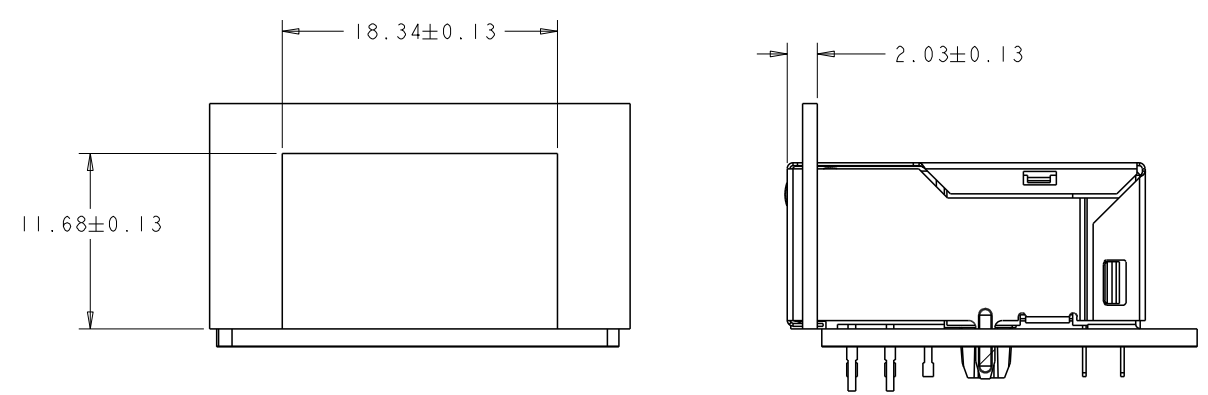
TOP & SIDES	GREEN	3.3	3.18	1840427-4
NO	YELLOW	1.8	1.8	1840427-3
NO	YELLOW	1.50	1.50±0.20	1840427-2
NO	YELLOW	3.3	3.18	1840427-1
TAB	LED 1	DIM B	DIM A	PART NO.

THIS DRAWING IS A CONTROLLED DOCUMENT.  
 DIMENSIONS: mm  
 TOLERANCES UNLESS OTHERWISE SPECIFIED:  
 0 PLC ±0.25  
 1 PLC ±0.25  
 2 PLC ±0.25  
 3 PLC ±0.25  
 4 PLC ±0.25  
 ANGLES ±0.5  
 FINISH: △  
 TRP connector Dongguan China  
 NAME: IXXI MAG45(TM), JACK, 826 10/100 SHIELDED, LEDS, TAB DOWN, LOW PROFILE  
 SIZE: A1  
 SCALE: NTS  
 SHEET: 1 OF 2  
 REV: B

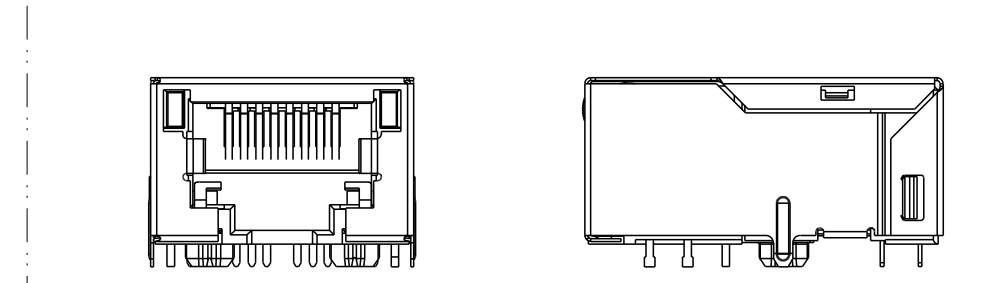


IT IS RECOMMENDED THAT SHADED AREA OF CUSTOMER PC BOARD BE CLEAR OF ANY VIA HOLE, COMPONENT AND CIRCUIT TRACE

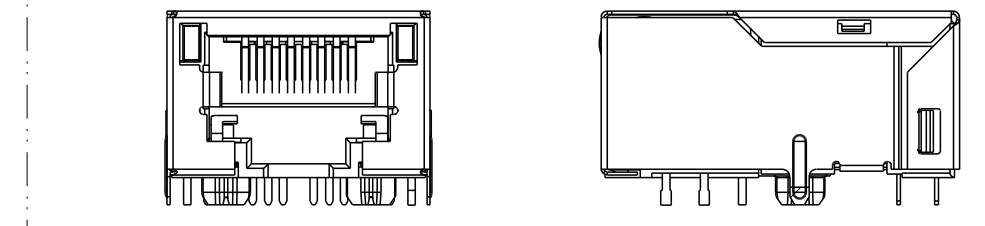
SUGGESTED PCB LAYOUT  
(COMPONENT SIDE)



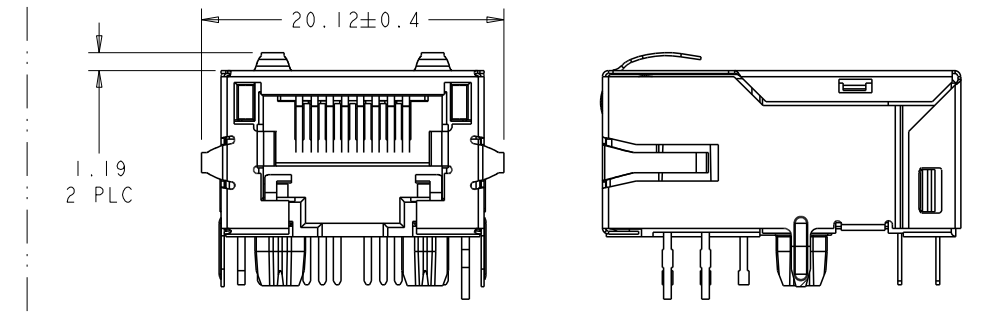
SUGGESTED PANEL OPENING



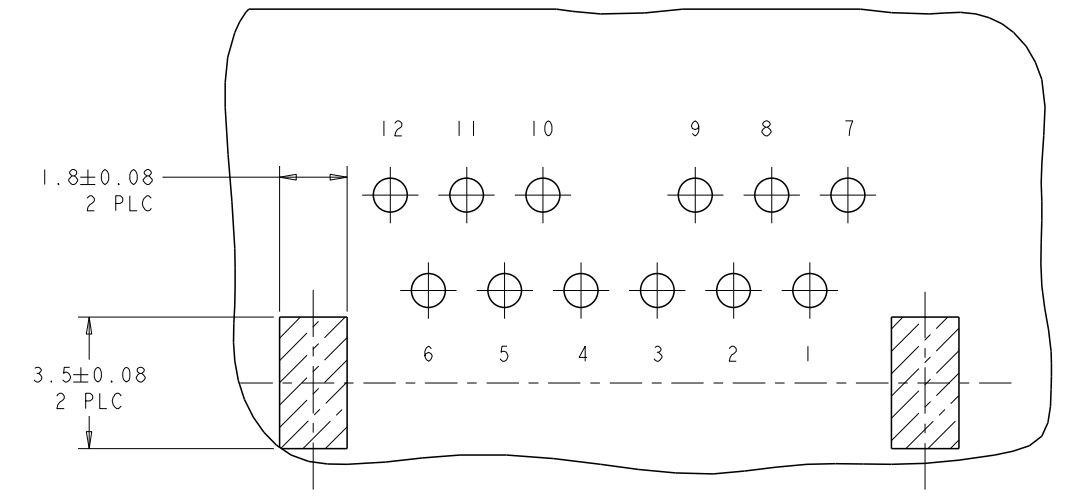
1840427-2



1840427-3



1840427-4



PIN DESIGNATIONS

THIS DRAWING IS A CONTROLLED DOCUMENT.		DRW: TOWER YU 07FEB2007		TRP connector Dongguan China
DIMENSIONS: mm		CHK: TEDDY XIONG 07FEB2007		NAME: IXI MAG45(TM), JACK, 826 10/100 SHIELDED, LEDS, TAB DOWN, LOW PROFILE
TOLERANCES UNLESS OTHERWISE SPECIFIED:		APPD: TEDDY XIONG 07FEB2007	PRODUCT SPEC: 108-2207	APPLICATION SPEC: 114-
	0 PLC ±0.25		SIZE: A1	CAGE CODE: 1840427
	1 PLC ±0.25		SCALE: NTS	SHEET 2 OF 2
	2 PLC ±0.25			REV: B
	3 PLC ±			
	4 PLC ±			
	ANGLES ±			
MATERIAL:	FINISH:	WEIGHT:	CUSTOMER DRAWING	