



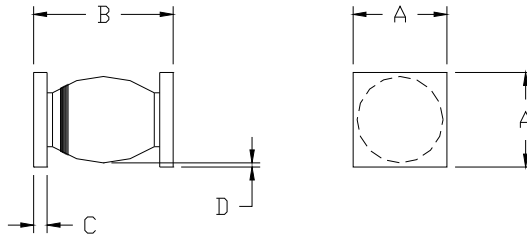
Solid State Devices, Inc.

14701 Firestone Blvd * La Mirada, Ca 90638
 Phone: (562) 404-4474 * Fax: (562) 404-1773
 ssdi@ssdi-power.com * www.ssdi-power.com

**SPD805SMS
 thru
 SPD830SMS**

ELECTRICAL CHARACTERISTICS		Symbol	Max	Unit
Instantaneous Forward Voltage Drop ($I_F = 8 \text{ Adc}$, $T_A = 25^\circ\text{C}$, 300 μs pulse)		V_{F1}	1.00	Vdc
Instantaneous Forward Voltage Drop ($I_F = 8 \text{ Adc}$, $T_A = -55^\circ\text{C}$, 300 μs pulse)		V_{F2}	1.10	Vdc
Reverse Leakage Current (At Rated V_R , 300 μs pulse minimum)	$T_A = 25^\circ\text{C}$	I_{R1}	20	μA
	$T_A = 100^\circ\text{C}$	I_{R2}	1	mA
Reverse Recovery Time ($I_F = 500 \text{ mA}$, $I_R = 1 \text{ A}$, $I_{RR} = 250 \text{ mA}$, $T_A = 25^\circ\text{C}$)		t_{rr}	40	ns
Junction Capacitance ($V_R = 10 \text{ V}_{DC}$, $T_A = 25^\circ\text{C}$, $f = 1 \text{ MHz}$)		C_J	100	pF

Case Outline: (SMS)



DIM	MIN	MAX
A	0.172"	0.180"
B	0.220"	0.290"
C	0.020"	0.035"
D	0.002"	—

Note: Dimensions prior to soldering.

NOTE: All specifications are subject to change without notification. SCD's for these devices should be reviewed by SSDI prior to release.

DATA SHEET #: RH0093C

DOC