





**Solid State Devices, Inc.**

14701 Firestone Blvd \* La Mirada, CA 90638

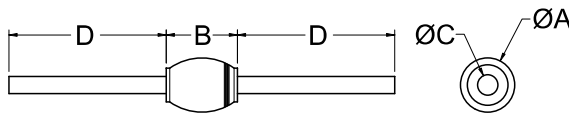
Phone: (562) 404-4474 \* Fax: (562) 404-1773

ssdi@ssdi-power.com \* www.ssdi-power.com

**SPD5186 Thru SPD5192  
and  
SPD5186SMS Thru SPD5192SMS**

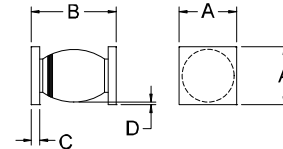
Electrical Characteristics	Symbol	Value	Units
<b>Instantaneous Forward Voltage Drop</b> ( $I_F = 3A_{dc}$ , $T_A = 25^\circ C$ , 300 $\mu s$ Pulse)	$V_F$	1.3	$V_{DC}$
<b>Instantaneous Forward Voltage Drop</b> ( $I_F = 3A_{dc}$ , $T_A = -55^\circ C$ , 300 $\mu s$ Pulse)	$V_F$	1.45	$V_{DC}$
<b>Reverse Leakage Current</b> (Rated $V_R$ , $T_A = 25^\circ C$ , 300 $\mu s$ minimum pulse)	$I_R$	5	$\mu A$
<b>Reverse Leakage Current</b> (Rated $V_R$ , $T_A = 100^\circ C$ , 300 $\mu s$ minimum pulse)	$I_R$	200	$\mu A$
<b>Reverse Recovery Time</b> ( $I_F = 500\text{ mA}$ , $I_R = 1\text{ Amp}$ , $I_{RR} = 250\text{ mA}$ , $T_A = 25^\circ C$ )	$t_{RR}$	150	nsec
		200	
<b>Junction Capacitance</b> ( $V_R = 10V_{DC}$ , $T_A = 25^\circ C$ , $f = 1\text{MHz}$ )	$C_J$	40	pF

**CASE OUTLINE: Axial**



Dimensions		
DIM	MIN	MAX
A	---	.200"
B	---	.230"
C	.047"	.053"
C (B Variant)	.038"	.042"
D	1.00"	---

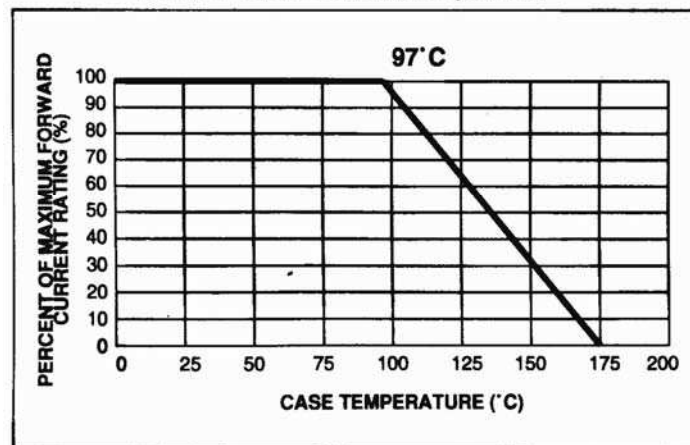
**CASE OUTLINE: Surface Mount Square Tab**



Dimensions		
DIM	MIN	MAX
A	.172"	.180"
B	.180"	.280"
C	.022"	.028"
D	.002"	---

**TYPICAL OPERATING CURVES**

$T_A = 25^\circ C$  Unless otherwise specified



**NOTE:** All specifications are subject to change without notification. SCD's for these devices should be reviewed by SSDI prior to release.

**DATA SHEET #: RF0009D**

**DOC**