



Solid State Devices, Inc.

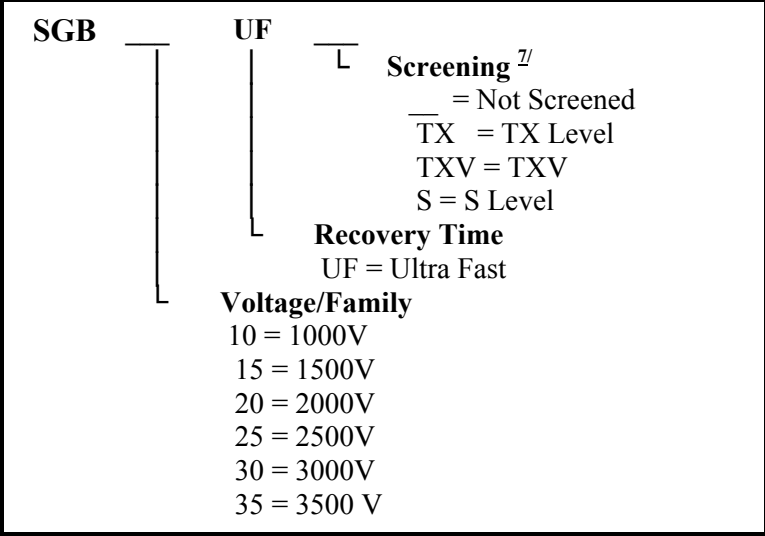
14701 Firestone Blvd * La Mirada, Ca 90638
 Phone: (562) 404-4474 * Fax: (562) 404-1773
 ssdi@ssdi-power.com * www.ssdi-power.com

**SGB10UF
and
SGB35UF**

**60 mA
1000 – 3500 VOLTS
60 nsec
HIGH VOLTAGE
RECTIFIER**

- FEATURES:**
- Ultra Fast Recovery: 60nsec Maximum
 - PIV to 3500 Volts
 - Hermetically Sealed
 - Void-Free Construction
 - Metallurgically Bonded
 - 175°C Maximum Operating Temperature
 - Micro Miniature Package
 - TX, TXV, and Space Level Screening Available^{7/}

Designer's Data Sheet



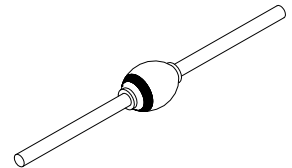
ELECTRICAL CHARACTERISTICS

Part Number	Peak Inverse Voltage	Average Rectifier Current		Maximum Reverse Current		Maximum Forward Voltage	Maximum Surge Current (1 Cycle)	Maximum Reverse Recovery Time	Maximum Junction Capacitance	Typical Thermal Impedance
		I ₀	I ₀	IR @ PIV	IR @ PIV					
Symbol	PIV	I ₀		IR @ PIV		V _F ^{2/}	I _{FSM}	t _{RR} ^{5/}	C _J	θ _{JL}
Units	Volts	mA		µA		Volts	Amps	nsec	pF	°C/W
Conditions		25°C	100°C	25°C	100°C	25°C	25°C	25°C	V _R = 100V f _T = 1MHZ	L = 1/4"
SGB10UF	1000	60	45	0.1	10	9.5	5	60	1.0	185
SGB15UF	1500	60	45	0.1	10	9.5	5	60	1.0	185
SGB20UF	2000	60	45	0.1	10	9.5	5	60	1.0	185
SGB25UF	2500	60	45	0.1	10	9.5	5	60	1.0	185
SGB30UF	3000	60	45	0.1	10	9.5	5	60	1.0	185
SGB35UF	3500	60	45	0.1	10	9.5	5	60	1.0	185

NOTES:

1. Operating and testing over 10,000 V/inch may require encapsulation or immersion in suitable dielectric material.
2. I_F = I₀; Maximum forward voltage measured with instantaneous forward pulse of 300msec minimum.
3. Maximum lead temperature for soldering is 250°C, 3/8" from case for 5 sec maximum.
4. Operating and Storage temperature: -65 to +175°C.
5. Reverse Recovery Test Conditions: I_F = 50mA, I_R = 100mA, I_{RR} = 25mA, T_A = 25°C.
6. Consult manufacturing for operating curves.
7. Screening based on MIL-PRF-19500. Screening flows available on request.

Axial





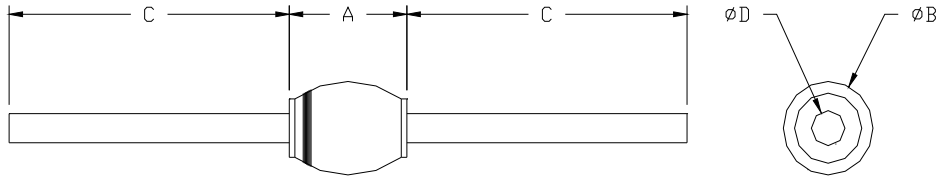
Solid State Devices, Inc.

14701 Firestone Blvd * La Mirada, Ca 90638
Phone: (562) 404-4474 * Fax: (562) 404-1773
ssdi@ssdi-power.com * www.ssdi-power.com

**SGB10UF
and
SGB35UF**

PACKAGE OUTLINE: AXIAL RECTIFIER

DIMENSIONS		
DIM	MIN	MAX
A	--	.150"
B	--	.090"
C	1.00"	--
D	.022"	.028"



NOTE: All specifications are subject to change without notification.
SCD's for these devices should be reviewed by SSDI prior to release.

DATA SHEET #: RV0003F

DOC