



Solid State Devices, Inc.

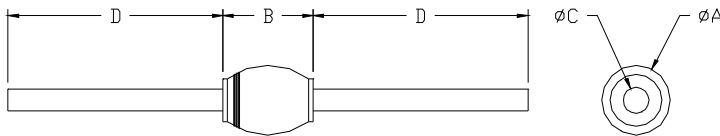
14701 Firestone Blvd * La Mirada, Ca 90638
 Phone: (562) 404-4474 * Fax: (562) 404-1773
 ssdi@ssdi-power.com * www.ssdi-power.com

**SPD5614 thru SPD5622
 SPD5614SM thru SPD5622SM
 SPD5614SMS thru SPD5622SMS**

2/ Screening Based on MIL-PRF-19500. Screening Flows Available on Request.

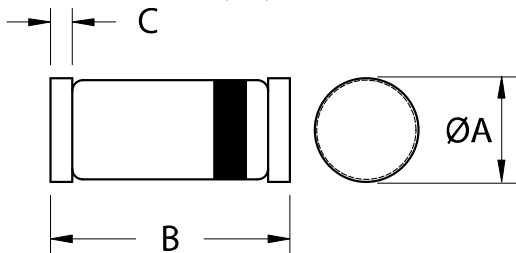
ELECTRICAL CHARACTERISTICS	Symbol	Value	Unit
Instantaneous Forward Voltage Drop ($I_F = 1$ Amp, $T_A = 25^\circ\text{C}$, 300-500 μs Pulse)	V_F	1.0	Volts
Instantaneous Forward Voltage Drop ($I_F = 1$ Amp, $T_A = -55^\circ\text{C}$, 300-500 μs Pulse)	V_F	1.2	Volts
Reverse Leakage Current (Rated V_R , $T_A = 25^\circ\text{C}$, 300 μs Pulse minimum)	I_R	2	μA
Max Reverse Leakage Current (Rated V_R , $T_A = 100^\circ\text{C}$, 300 μs Pulse minimum)	I_R	200	μA
Max Junction Capacitance ($V_R = 10$ V _{DC} , $T_A = 25^\circ\text{C}$, $f = 1$ MHz)	C_J	20	pF
Reverse Recovery Time ($I_F = 500$ mA, $I_R = 1$ A, $I_{RR} = 250$ mA, $T_A = 25^\circ\text{C}$)	t_{rr}	5	μsec

CASE OUTLINE: AXIAL



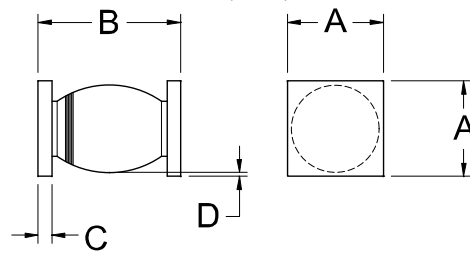
DIMENSIONS		
DIM	MIN	MAX
A	---	.150"
B	---	.180"
C	.027"	.033"
D	1.00"	---

CASE OUTLINE: (SM) SURFACE MOUNT ROUND TAB



DIMENSIONS		
DIM	MIN	MAX
A	.095"	.105"
B	.185"	.205"
C	.010"	.022"

CASE OUTLINE: (SMS) SURFACE MOUNT SQUARE TAB



DIMENSIONS		
DIM	MIN	MAX
A	.125"	.135"
B	.205"	.255"
C	.022"	.028"
D	.002"	---

NOTE: All specifications are subject to change without notification. SCD's for these devices should be reviewed by SSDI prior to release.

DATA SHEET #: R00011E

DOC