



Solid State Devices, Inc.

14701 Firestone Blvd * La Mirada, Ca 90638
 Phone: (562) 404-4474 * Fax: (562) 404-1773
 ssdi@ssdi-power.com * www.ssdi-power.com

**SSR20C120CTM and
 SSR20C120CTJ Series**

**20 A / 1200 V
 Schottky Silicon Carbide
 Centertap Rectifier**

Designer's Data Sheet

Part Number / Ordering Information^{1/}

SSR20C

Screening^{2/}
 — = Not Screened
 TX = TX Level
 TXV = TXV Level
 S = S Level

Lead Bend Options
 — = Straight Leads
 DB = Down Bend
 UB = Up Bend

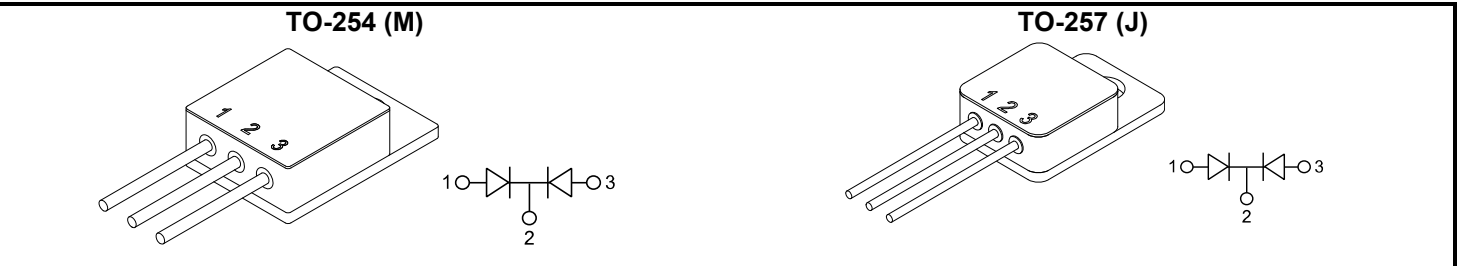
Package
 M = TO-254
 J = TO-257

Configuration
 CT = Centertap

Voltage
 080 = 800 V
 100 = 1000 V
 120 = 1200 V

- FEATURES:**
- 1200 Volt Silicon Carbide Schottky Rectifier
 - Average Output Current: 20 Amps
 - No Reverse Recovery
 - No Forward Recovery
 - No Switching Time Change Over Temperature
 - Small Package Size
 - TO-257: 3.2 gr (typ); TO-254: 6.3 gr (typ)
 - TX, TXV, and Space Level Screening Available. Consult Factory

MAXIMUM RATINGS ^{3/}		Symbol	Value	Units
Peak Repetitive and Peak Reverse Voltage	SSR20C080CT	V_{RRM} V_R	800	Volts
	SSR20C100CT		1000	
	SSR20C120CT		1200	
Average Rectified Forward Current (Resistive Load, 60 Hz, Sine Wave)	Per Leg Total	I_o	10	Amps
			20	
Peak Surge Current (8.3 ms Pulse, Half Sine Wave, $T_A = 25^\circ\text{C}$, per leg)		I_{FSM}	50	Amps
Operating & Storage Temperature		$T_{OP} \& T_{stg}$	-55 to +250	°C
Junction Temperature		T_J	-55 to +250	°C
Maximum Thermal Resistance (Junction to Case)		$R_{\theta JC}$	1.5	°C/W



- Notes:**
- 1/ For ordering information, price, and availability, contact factory.
 - 2/ Screening based on MIL-PRF-19500. Screening flows available on request.
 - 3/ Per leg. Unless otherwise specified, all electrical characteristics @25°C.

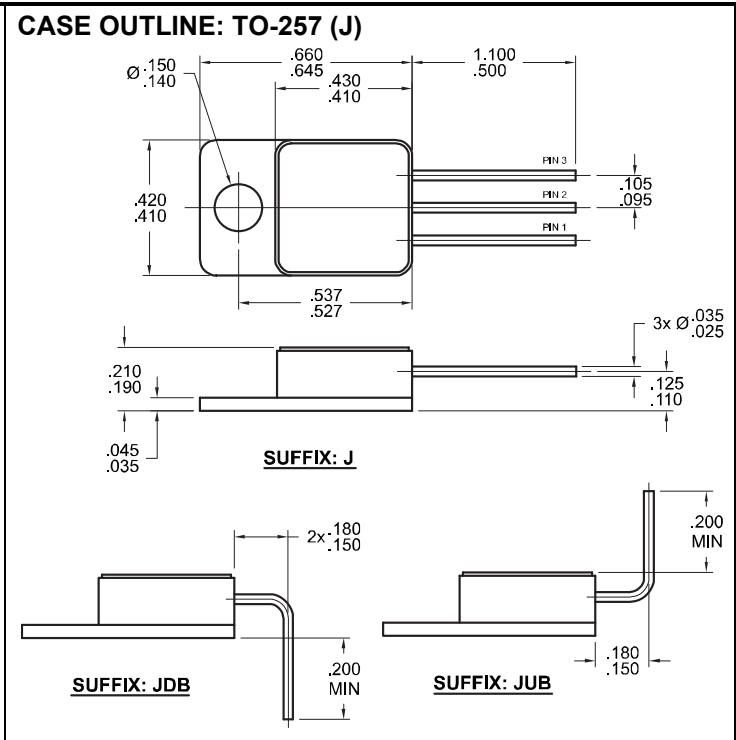
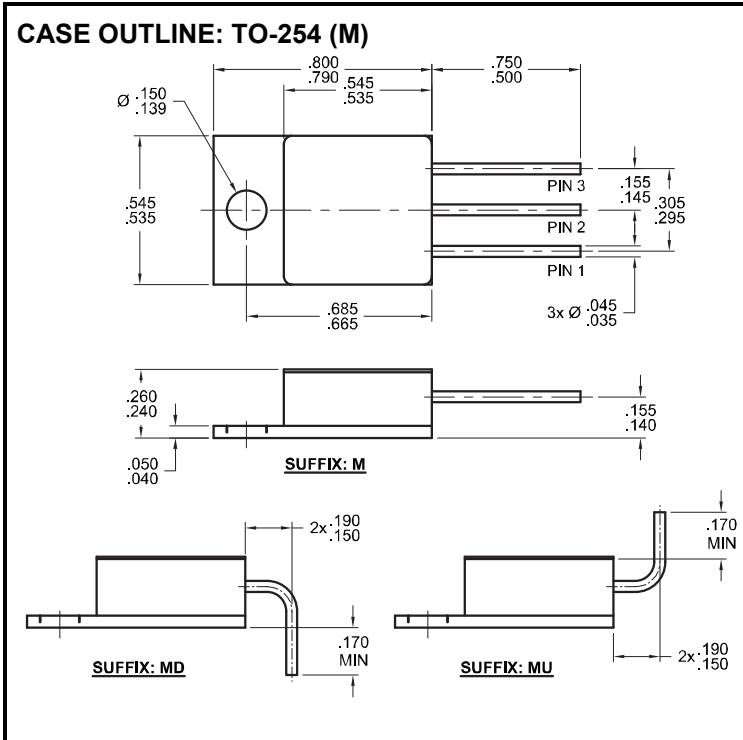


Solid State Devices, Inc.

14701 Firestone Blvd * La Mirada, Ca 90638
 Phone: (562) 404-4474 * Fax: (562) 404-1773
 ssdi@ssdi-power.com * www.ssdi-power.com

SSR20C120CTM and SSR20C120CTJ Series

ELECTRICAL CHARACTERISTICS ^{3/}		Symbol	Min	Typ	Max	Units
Instantaneous Forward Voltage Drop (T _A =25°C, 300 - 500 μsec pulse)	I _F = 2.0 A	V _{F1}	—	1.06	1.20	V _{DC}
	I _F = 5.0 A	V _{F2}	—	1.25	1.50	
	I _F = 10 A	V _{F3}	—	1.53	1.80	
Instantaneous Forward Voltage Drop (300 - 500 μsec pulse)	T _A = -55°C, I _F = 5 A	V _{F4}	—	1.25	1.60	V _{DC}
	T _A = 150 °C, I _F = 5 A	V _{F5}	—	1.45	1.80	
Reverse Leakage Current (Rated V _R , T _A = 25°C, 300 μsec pulse minimum)		I _{R1}	—	10	50	μA
Reverse Leakage Current (Rated V _R , T _A = 150°C, 300 μsec pulse minimum)		I _{R2}	—	15	250	μA
Junction Capacitance (V _R = 10V, f = 1MHz, T _A = 25°C)		C _J	—	375	450	pF



Notes: *Pulse Test: Pulse Width = 300 μsec, Duty Cycle = 2%
 1/ For ordering information, price, and availability, contact factory.
 2/ Screening based on MIL-PRF-19500. Screening flows available on request.
 3/ Per leg. Unless otherwise specified, all electrical characteristics @ 25°C.

PIN ASSIGNMENT

Package	Pin 1	Pin 2	Pin 3 (Tab)
TO-254 (M)	Anode	Cathode	Anode
TO-257 (J)	Anode	Cathode	Anode

Available Part Numbers:
 SSR20C080CTM, SSR20C080CTMDB, SSR20C080CTMUB
 SSR20C100CTM, SSR20C100CTMDB, SSR20C100CTMUB
 SSR20C120CTM, SSR20C120CTMDB, SSR20C120CTMUB
 SSR20C080CTJ, SSR20C080CTJDB, SSR20C080CTJUB
 SSR20C100CTJ, SSR20C100CTJDB, SSR20C100CTJUB
 SSR20C120CTJ, SSR20C120CTJDB, SSR20C120CTJUB